



28Q700

Illustrated Parts List

Model Series

28Q700

TYPE NUMBERS
0026 through 0694.

TABLE OF CONTENTS

Air Cleaner	5
Alternator	9
Blower Housing/Shrouds	7
Cams	2
Carburetor	4
Controls	6
Crankcase Cover/Sump	2
Crankshaft	2
Cylinder	2
Electric Starter	10
Flywheel	8
Fuel Tank	6
Governor Spring	6
Head	3
Ignition	9
Kits/Gaskets-Carburetor	4
Kits/Gaskets-Valve	2
Muffler	5
Oil	3
Piston Group	2
Rewind	8
Valves	3

PRINTED IN U.S.A.

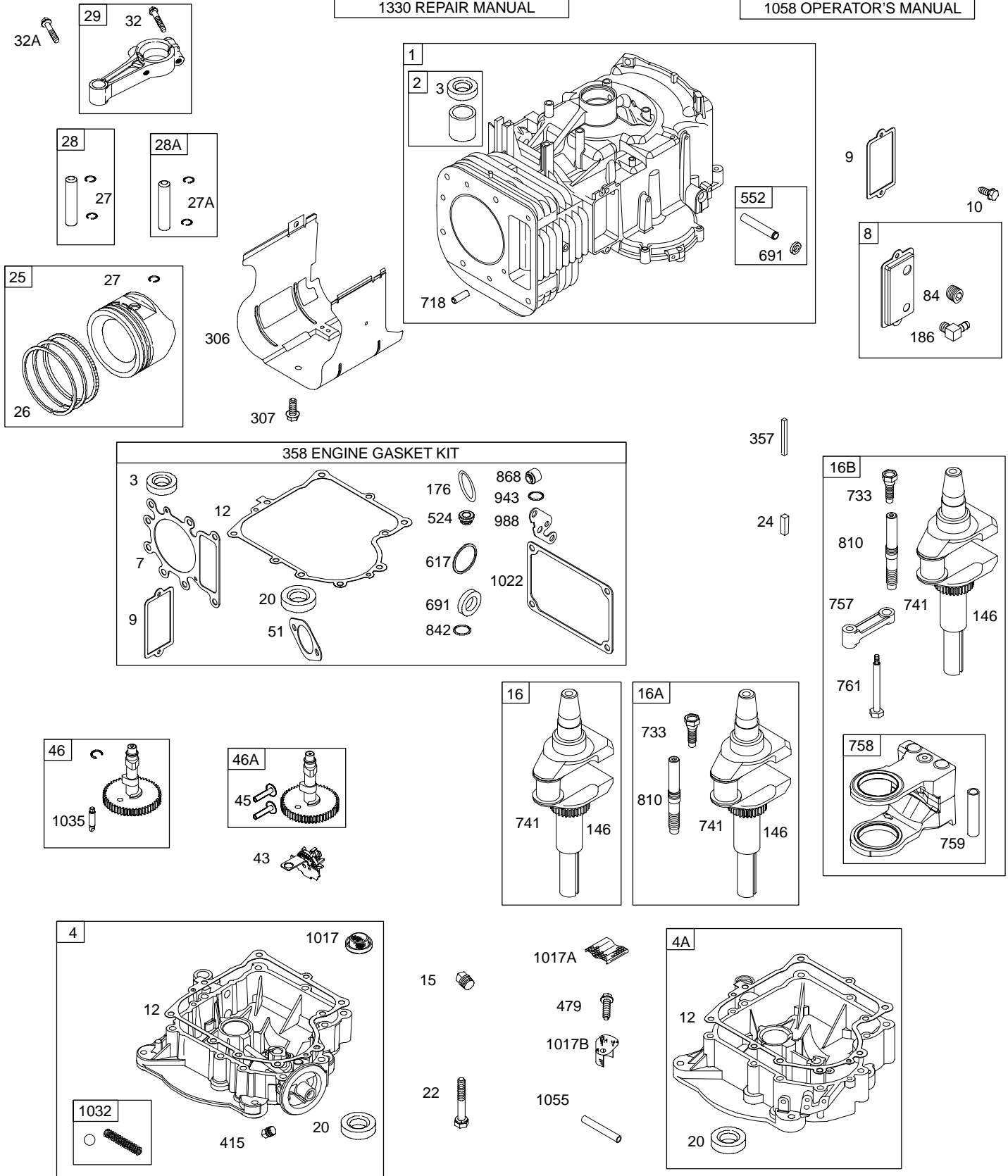


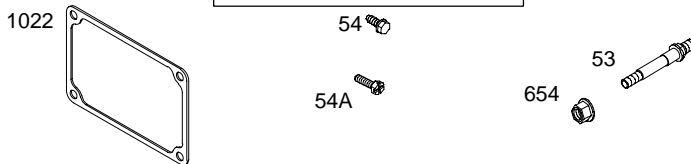
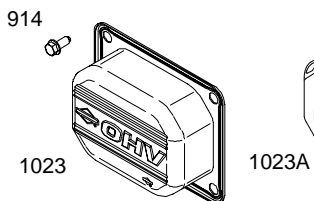
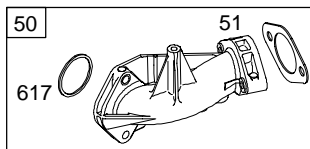
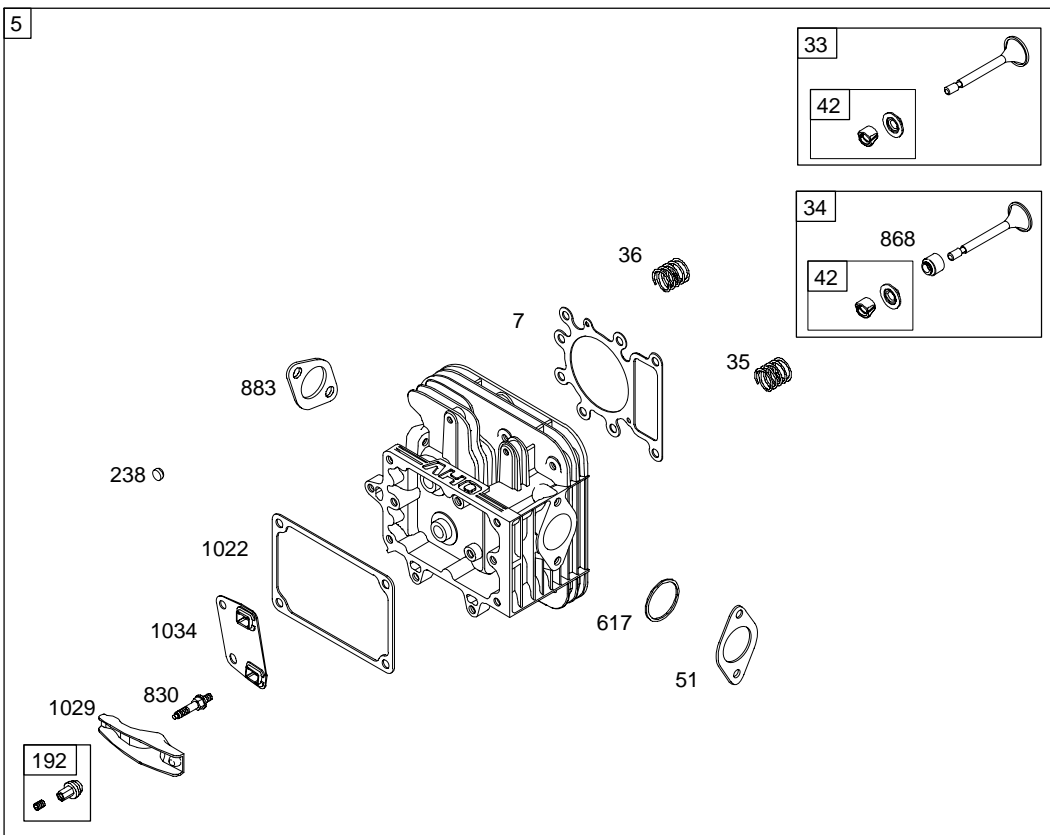
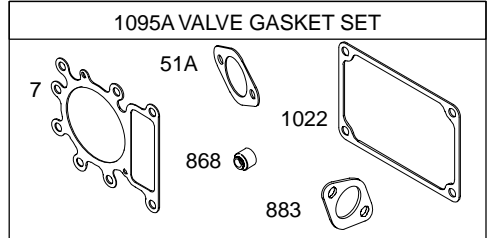
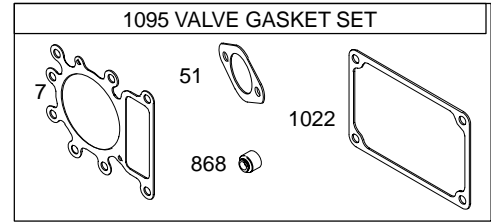
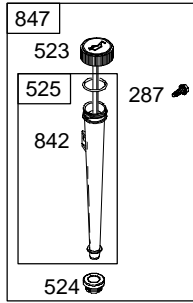
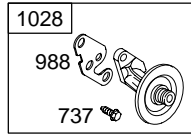
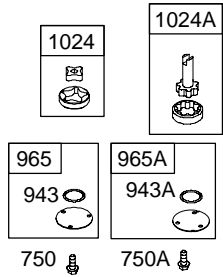
COPYRIGHT by BRIGGS & STRATTON CORPORATION
All rights reserved. No part of this material may be reproduced or transmitted, in any form or by any means, electronic or mechanical, including photocopying, recording or by any information storage and retrieval system, without permission in writing from Briggs & Stratton Corporation.

28Q700

1330 REPAIR MANUAL

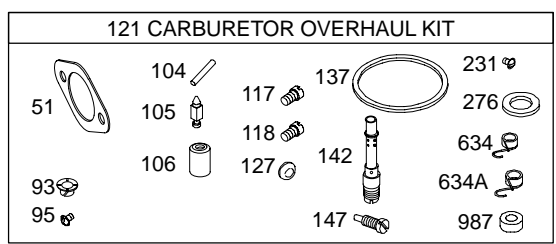
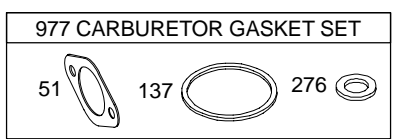
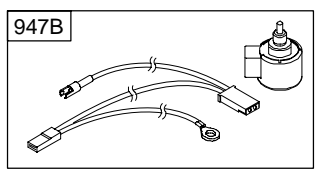
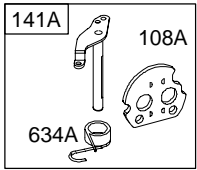
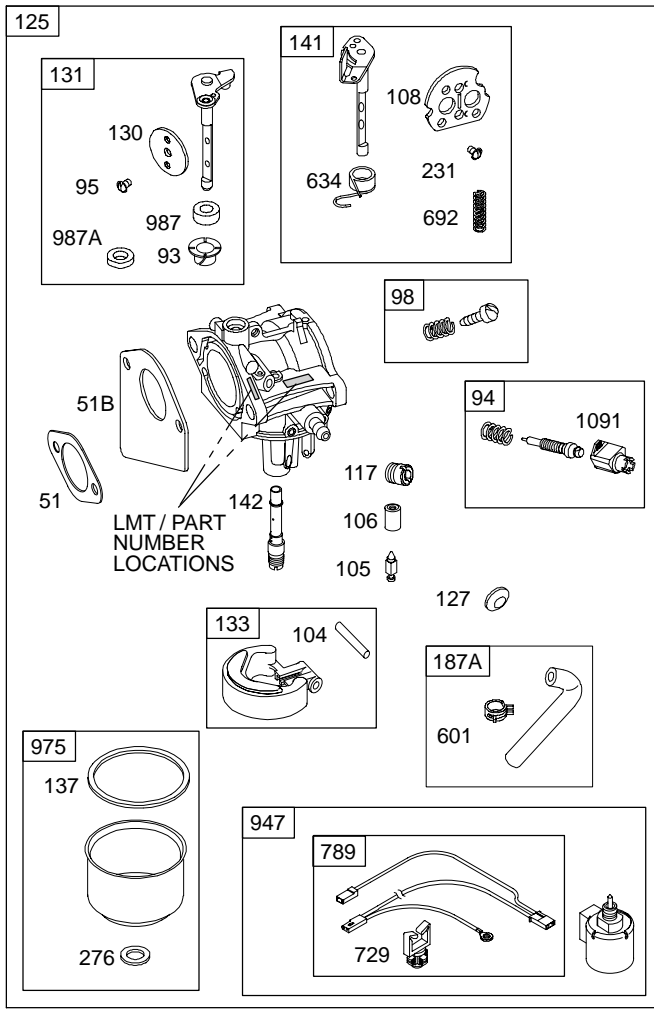
1058 OPERATOR'S MANUAL



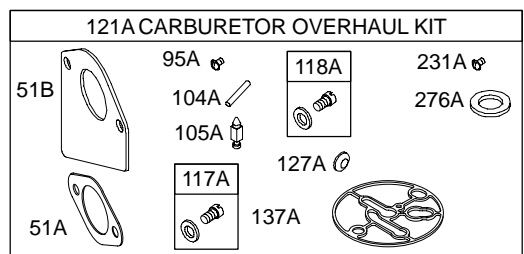
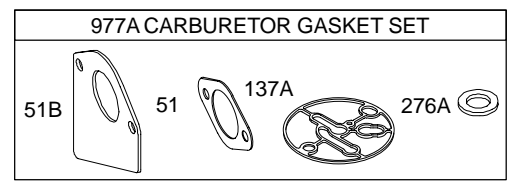
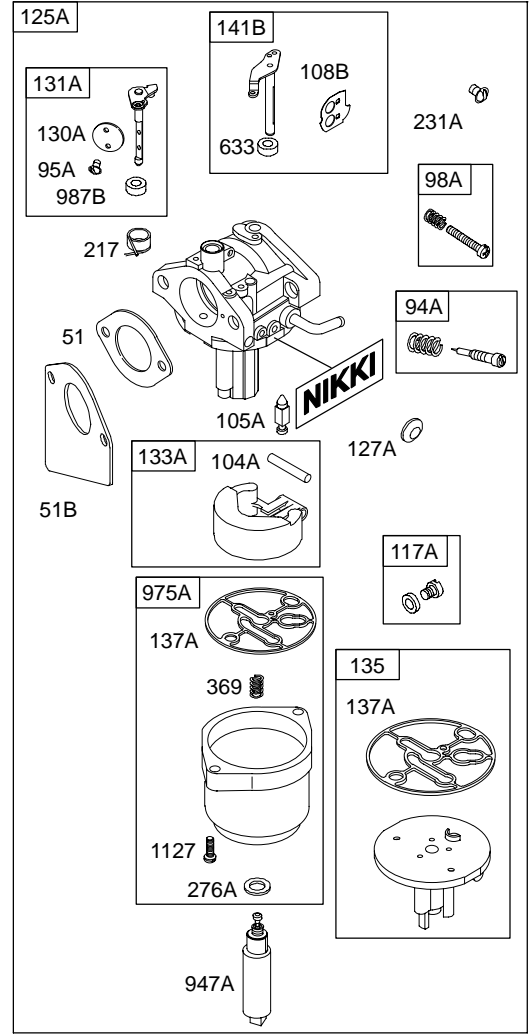


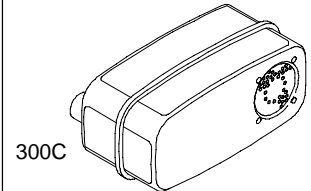
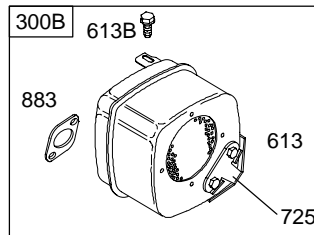
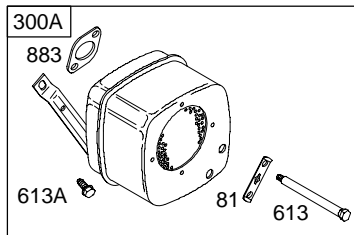
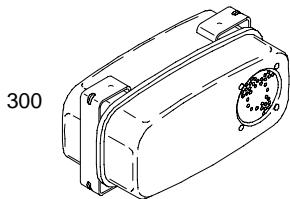
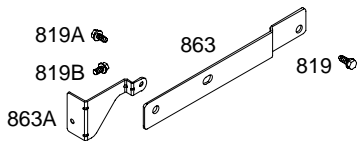
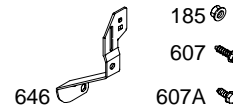
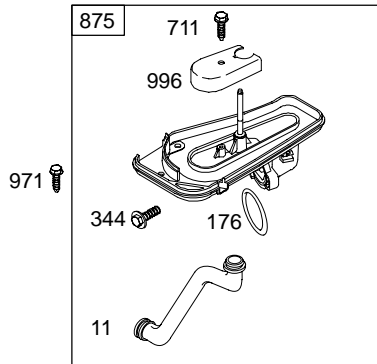
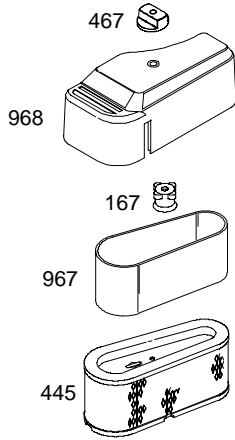
28Q700

WALBRO

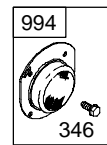
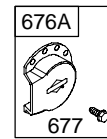
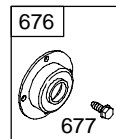
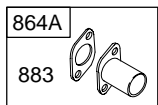
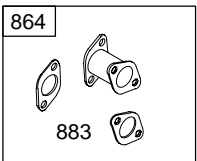


NIKKI

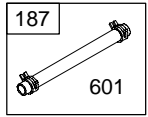




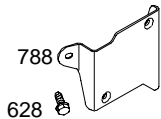
823



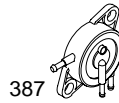
28Q700



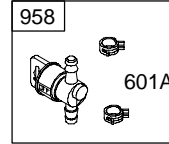
601



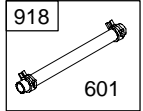
628



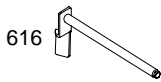
385



601A



601

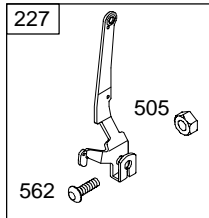


269



404

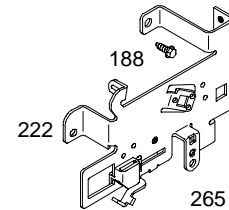
614 R



227

505

562



222

188

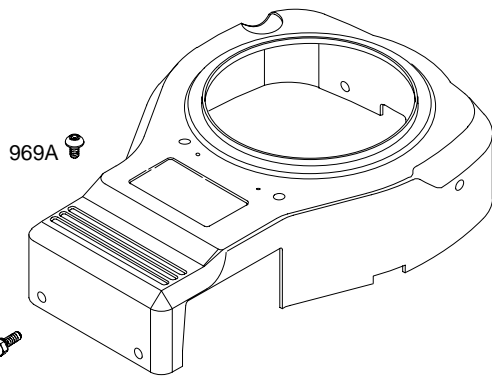
265

559

267



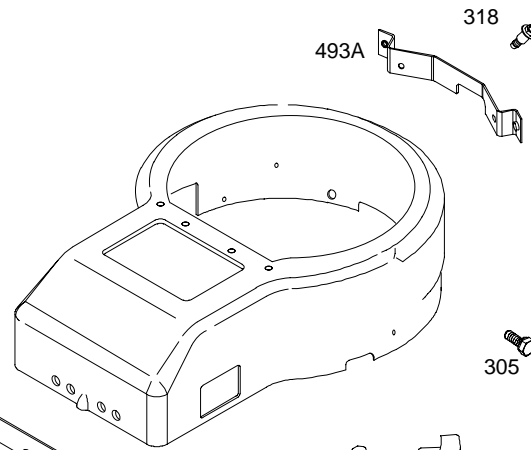
209



969A

921

969

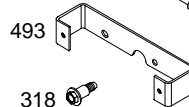


493A

318

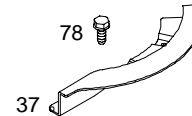
304

305



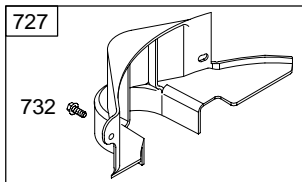
493

318



78

37

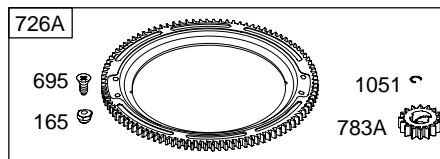
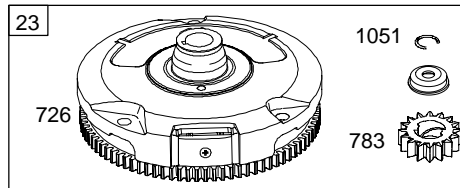
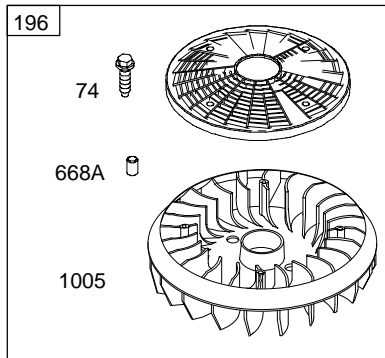
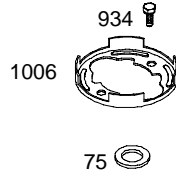
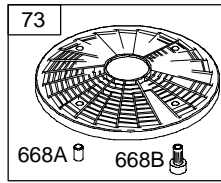


727








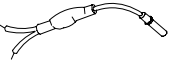

732

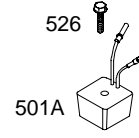
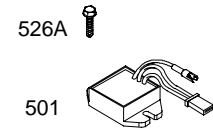
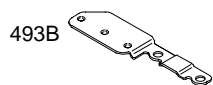
1019 LABEL KIT

1036 EMISSION LABEL

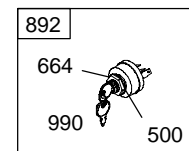
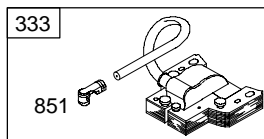
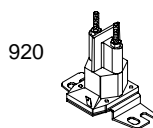


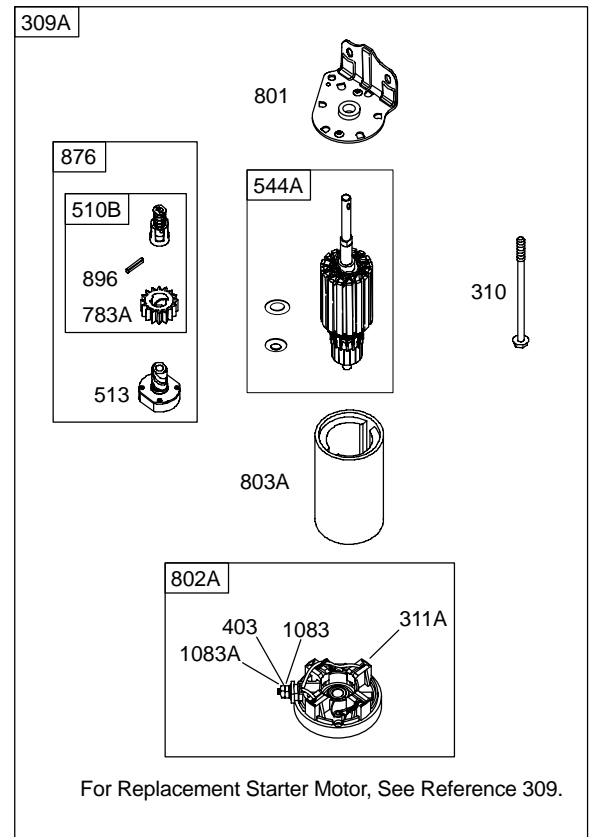
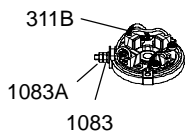
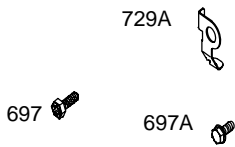
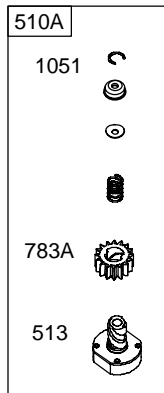
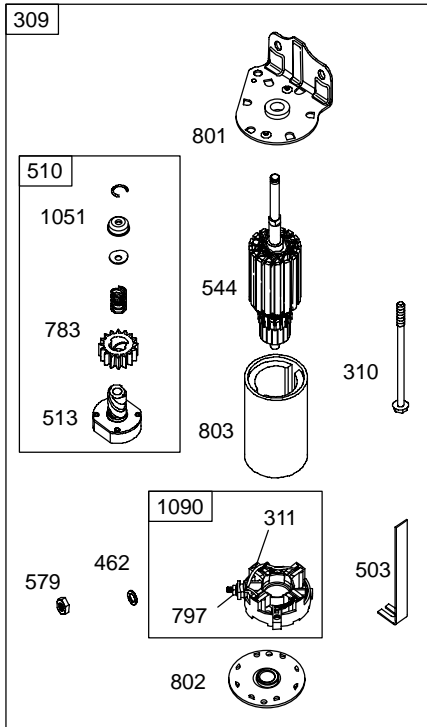
28Q700

DUAL CIRCUIT	TRI CIRCUIT	10 AMP
<div data-bbox="495 325 544 357">474</div> <div data-bbox="511 367 560 399">877</div>  <div data-bbox="535 525 625 598"> <div data-bbox="544 525 617 556">1059</div>  </div>	<div data-bbox="682 325 738 357">474A</div> <div data-bbox="698 367 755 399">877A</div>  <div data-bbox="738 525 828 598"> <div data-bbox="747 525 820 556">1059</div>  </div>	<div data-bbox="885 325 950 357">474B</div> <div data-bbox="901 367 966 399">877B</div>  <div data-bbox="933 525 1031 598"> <div data-bbox="941 525 1015 556">1059</div>  </div>
<div data-bbox="503 640 552 672">878</div> 	<div data-bbox="698 640 755 672">878A</div> 	<div data-bbox="901 661 950 693">578</div> 



NOTE: ALL OLD STYLE STATORS USE
REFERENCE NUMBER 1119 MOUNTING SCREW





28Q700

REF. NO.	PART NO.	DESCRIPTION	REF. NO.	PART NO.	DESCRIPTION	REF. NO.	PART NO.	DESCRIPTION
1	496412	Cylinder Assembly	23	693556	Flywheel (Steel Ring Gear)	26	696403	Ring Set (Standard)
2	399265	Kit-Bushing/Seal (Magneto Side)			Note			(Used After Code Date 01041800).
3	★391086	Seal-Oil (Magneto Side)			693557 Flywheel (Steel Ring Gear)			696404 Ring Set (.010" Oversize)
4	693582	Sump-Engine (Used After Code Date 98063000).			Used on Type No(s). 0116, 0117, 0128, 0136, 0144, 0151, 0155, 0164, 0165, 0167, 0168, 0613, 0616, 0624, 0636, 0641, 0647, 0655, 0662, 0664, 0667, 0668, 0671, 0673, 0675, 0681, 0687, 0688, 0690.			(Used After Code Date 01041800).
4A	496742	Sump-Engine (Used Before Code Date 98070100).						696405 Ring Set (.020" Oversize)
5	698148	Head-Cylinder						(Used After Code Date 01041800).
7	△★273280	Gasket-Cylinder Head						696406 Ring Set (.030" Oversize)
8	696126	Breather Assembly						(Used After Code Date 01041800).
9	★27803	Gasket-Breather						
10	691666	Screw (Breather Assembly)	24	222698	Key-Flywheel			Note
11	691328	Tube-Breather	25	696397	Piston Assembly (Standard)			495854 Ring Set (Standard)
12	★692226	Gasket-Crankcase (.015" Thick) (Standard)			(Used After Code Date 01041800).			(Used Before Code Date 01041900).
		Note			696399 Piston Assembly (.020" Oversize)			495851 Ring Set (.020" Oversize)
		★691406 Gasket- Crankcase (.005" Thick)			(Used After Code Date 01041800).			(Used Before Code Date 01041900).
		★691405 Gasket- Crankcase (.009" Thick)			696400 Piston Assembly (.030" Oversize)			495855 Ring Set (.030" Oversize)
13	690360	Screw (Cylinder Head)			(Used After Code Date 01041800).			(Used Before Code Date 01041900).
15	690946	Plug-Oil Drain			Note	27	691299	Lock-Piston Pin (Used After Code Date 95101500).
		Note			691680 Plug-Oil Drain Used on Type No(s). 0623, 0624, 0676.			
16	690136	Crankshaft (Used After Code Date 98063000).			499284 Piston Assembly (Standard)	27A	691792	Lock-Piston Pin (Used Before Code Date 95101600).
16A	693944	Crankshaft (Used Before Code Date 98070100 and After Code Date 95073100).			(Used Before Code Date 01041900).			
16B	693653	Crankshaft (Used Before Code Date 95080100).			499292 Piston Assembly (.020" Oversize)			
20	★291675	Seal-Oil (PTO Side)			(Used Before Code Date 01041900).			
22	692125	Screw (Crankcase Cover/Sump)						

★ Engine Gasket Set – Reference 358
 ● Carburetor Overhaul Kit – Reference 121
 ∅ Carburetor Overhaul Kit – Reference 121A

◆ Carburetor Gasket Set – Reference 977
 ∇ Carburetor Gasket Set – Reference 977A
 △ Valve Gasket Set – Reference 1095, 1095A

0295-10

Assemblies include all parts shown in frames.

08/11/2004

28Q700

REF. NO.	PART NO.	DESCRIPTION	REF. NO.	PART NO.	DESCRIPTION	REF. NO.	PART NO.	DESCRIPTION
28	498319	Pin-Piston (Standard) (Used After Code Date 95101500). Note 498320 Pin-Piston (.005" Oversize) (Used After Code Date 95101500).	33	695760	Valve-Exhaust	74	691658	Screw (Rotating Screen) (1.8" Long)
28A	299691	Pin-Piston (Standard) (Used Before Code Date 95101600). Note 391286 Pin-Piston (.005" Oversize) (Used Before Code Date 95101600).	34	695761	Valve-Intake	74A	691674	Screw (Rotating Screen) (1.5" Long)
29	692419	Rod-Connecting (Standard) (Used After Code Date 98063000). Note 494504 Rod-Connecting (Standard) (Used Before Code Date 98070100). 692420 Rod-Connecting (.020" Undersize) (Used After Code Date 98063000). 495490 Rod-Connecting (.020" Undersize) (Used Before Code Date 98070100).	35	691279	Spring-Valve (Intake)	74B	698425	Screw (Rotating Screen) (1.25" Long)
32	692852	Screw (Connecting Rod) (1 5/8" Long) (Used After Code Date 98063000). Note 690356 Screw (Connecting Rod) (1 7/8" Long) (Used Before Code Date 98070100).	36	691279	Spring-Valve (Exhaust)	75	690582	Washer (Flywheel)
32A	690348	Screw (Connecting Rod) (1 5/8" Long) (Used Before Code Date 98070100).	37	690456	Guard-Flywheel	78	697561	Screw (Flywheel Guard)
			42	499586	Keeper-Valve	81	691178	Lock-Muffler Screw
			43	691968	Slinger-Governor/Oil	84	690343	Plug-Breather
			45	690564	Tappet-Valve	93	690602	Bushing-Throttle Shaft
			46	698492	Camshaft (Used After Code Date 98063000).	94	498030	Kit-Idle Mixture
			46A	790340	Camshaft (Used Before Code Date 98070100).	94A	695425	Kit-Idle Mixture (Nikki)
			50	690193	Manifold-Intake	95	691636	Screw (Throttle Valve)
			51★◆692137	Gasket-Intake	95A	690718	Screw (Throttle Valve)	
			51A Δ★272569	Gasket-Intake (Used Before Code Date 97100600).	98	495800	Kit-Idle Speed	
			51B★◆692284	Gasket-Intake	98A	695408	Kit-Idle Speed	
			53	690227	Stud (Carburetor)	104	690525	Pin-Float Hinge
			54	691148	Screw (Intake Manifold) (Used After Code Date 97100500).	104A	694918	Pin-Float Hinge
			54A	690953	Screw (Intake Manifold) (Used Before Code Date 97100600).	105	231855	Valve-Float Needle
			73	494439	Screen-Rotating	105A	694922	Valve-Float Needle
						106	690577	Seat-Inlet (Gravity Feed) Note 691780 Inlet Seat (Pump Feed)
						108	690464	Valve-Choke
						108A	692344	Valve-Choke
						108B	695419	Valve-Choke

★ Engine Gasket Set - Reference 358
 ● Carburetor Overhaul Kit - Reference 121
 ∅ Carburetor Overhaul Kit - Reference 121A
0295-11

Assemblies include all parts shown in frames.

◆ Carburetor Gasket Set - Reference 977
 ∇ Carburetor Gasket Set - Reference 977A
 Δ Valve Gasket Set - Reference 1095, 1095A

08/11/2004

28Q700

REF. NO.	PART NO.	DESCRIPTION	REF. NO.	PART NO.	DESCRIPTION	REF. NO.	PART NO.	DESCRIPTION
117	●692408	Jet–Main (Standard) (LMT 150, 152, 153, 154, 155, 156) ————— Note ————— ●697228 Jet–Main (Standard) (LMT 33, 34, 73, 74, 76, 121, 122, 124, 125, 126, 128, 129, 130, 132, 137, 138)	125	698620	Carburetor (Gravity Feed) ————— Note ————— 698782 Carburetor (Pump Feed)	186	691609	Connector–Hose (Vacuum Line) (Breather Assembly)
117A	●695415	Jet–Main (Standard)	125A		Carburetor (Nikki) (Service with Walbro Carburetor, Gravity Feed)	186A	692317	Connector–Hose (Carburetor) (Used Before Code Date 02102800).
118	●232116	Jet–Main (High Altitude) (LMT 150, 152) ————— Note ————— 692411 Jet–Main (High Altitude) (LMT 153, 154, 156) 231850 Jet–Main (High Altitude) (LMT 33, 34, 73, 74, 76, 121, 122, 124, 125, 126, 128, 129, 130, 132, 137, 138)	127	●695005	Plug–Welch	187	296004	Line–Fuel (Cut to Required Length)
118A	●695416	Jet–Main (High Altitude)	127A	●690727	Plug–Welch	187A	699331	Line–Fuel (Formed) (10 1/4" Long) (Cut to Required Length) ————— Note ————— 697907 Line–Fuel (Formed) (9 5/8" Long)
121	690191	Kit–Carburetor Overhaul (Used After Code Date 97100500). ————— Note ————— 499233 Kit–Carburetor Overhaul (Used After Code Date 96072500 and Before Code Date 97100600). 498116 Kit–Carburetor Overhaul (Used Before Code Date 96072600).	130	691750	Valve–Throttle	188	691693	Screw (Control Bracket)
121A	695427	Kit–Carburetor Overhaul	130A	695418	Valve–Throttle	192	691986	Adjuster–Rocker Arm
			131	494379	Kit–Throttle Shaft	196	695493	Fan/Screen Assembly
			131A	695421	Kit–Throttle Shaft	202	691841	Link–Mechanical Governor
			133	494381	Float–Carburetor	209	692208	Spring–Governor (Green) ————— Note ————— 690480 Spring– Governor (Red) Used on Type No(s). 0139, 0140, 0167, 0639, 0641, 0647, 0667, 0674, 0676, 0679, 0692. 691795 Spring– Governor (Yellow) Used on Type No(s). 0155, 0627, 0655, 0672, 0693.
			133A	694914	Float–Carburetor	216	691840	Link–Choke
			135	696142	Tube–Fuel Transfer	217	695409	Spring–Choke Return
			137	●281165	Gasket–Float Bowl	222	694042	Bracket–Control
			137A	●695426	Gasket–Float Bowl	227	691374	Lever–Governor Control
			141	495097	Kit–Choke Shaft	231	●691636	Screw (Choke Valve)
			141A	495931	Kit–Choke Shaft	231A	●690718	Screw (Choke Valve)
			141B	695420	Kit–Choke Shaft	232	691842	Spring–Governor Link
			142	●692412	Nozzle–Carburetor (LMT 149, 150, 152, 153, 154, 155, 156) ————— Note ————— ●231990 Nozzle– Carburetor (LMT 33, 34, 73, 74, 76, 121, 122, 124, 125, 126, 128, 129, 130, 132, 137, 138)	238	691843	Cap–Valve
			146	691639	Key–Timing			
			147	●231985	Jet–Pilot (LMT 73, 74, 76, 121, 122, 124, 125, 126, 128, 129, 130, 132, 137, 138) ————— Note ————— ●497472 Jet–Pilot (LMT 33, 34)			
			165	693148	Nut (Ring Gear)			
			167	692297	Seal–Air Cleaner Nut			
			176	★691917	Seal–O Ring (Air Cleaner Base)			
			185	690958	Nut (Air Cleaner Base)			

★ Engine Gasket Set – Reference 358
● Carburetor Overhaul Kit – Reference 121
∅ Carburetor Overhaul Kit – Reference 121A

◆ Carburetor Gasket Set – Reference 977
▽ Carburetor Gasket Set – Reference 977A
△ Valve Gasket Set – Reference 1095, 1095A

REF. NO.	PART NO.	DESCRIPTION	REF. NO.	PART NO.	DESCRIPTION	REF. NO.	PART NO.	DESCRIPTION	
240	298090	Filter–Fuel (Red) Note 394358 Filter–Fuel (White)	309	693551	Motor–Starter (3 5/8" Housing Length) (Steel Ring Gear Only) Note	318	692127	Screw (Mounting Bracket)	
265	691024	Clamp–Casing		497595	Motor–Starter (3 5/8" Housing Length) (Plastic Ring Gear Only)	333	492341	Armature–Magneto	
267	690804	Screw (Casing Clamp)		693054	Motor–Starter (3 5/8" Housing Length)	334	691061	Screw (Magneto Armature)	
268	691025	Casing–Control Wire (Cut to Required Length)		693552	Motor–Starter (4 3/8" Housing Length) (Steel Ring Gear Only)	337	491055	Plug–Spark	
269	691026	Wire–Control (Cut to Required Length)		497401	Motor–Starter (4 3/8" Housing Length) (Plastic Ring Gear Only)	344	693675	Screw (Cable Clamp) (Air Cleaner Base)	
270	691027	Nut (Control Wire Casing)		499521	Motor–Starter (4 3/8" Housing Length) (Aluminum Ring Gear Only)	346	690661	Screw (Spark Arrestor)	
271	691028	Lever–Control		309A	Motor–Starter (For Replacement Starter Motor, See Reference 309)	356	690807	Wire–Stop	
276	◆692255	Washer–Sealing		310	690323	Bolt (Starter Motor) (3 5/8" Housing Length) Note	357	691483	Key–Drive Pulley
276A	◆695410	Washer–Sealing			691263	Bolt (Starter Motor) (4 3/8" Housing Length)	358	691580	Gasket Set–Engine (Used After Code Date 97100500). Note
287	691002	Screw (Dipstick Tube)			692329	Bolt (Starter Motor) (4 9/16" Housing Length)		495993	Gasket Set–Engine (Used Before Code Date 97100600).
300	690850	Muffler		311	497608	Brush Set	363	19203	Puller–Flywheel
300A	496022	Muffler		311A	395538	Brush Set (3 5/8" Housing Length)	369	695422	Spring–Float Bowl
300B	691874	Muffler Used on Type No(s). 0692.		311B	490311	Brush Set (4 9/16" Housing Length)	383	89838	Wrench–Spark Plug
300C	498984	Muffler Used on Type No(s). 0694.					385	691108	Screw (Fuel Pump)
304	690497	Housing–Blower					387	808656	Pump–Fuel
305	691108	Screw (Blower Housing)					403	690288	Washer (End Cap)
306	698454	Shield–Cylinder					404	691691	Washer (Governor Crank)
307	691003	Screw (Cylinder Shield)					415	690283	Plug (Pressure Relief Valve)
							445	496894	Filter–Air Cleaner Cartridge
							462	691261	Washer (Starter Cable)
							467	691668	Knob–Air Cleaner
							474	696459	Alternator (Dual Circuit)
							474A	696457	Alternator (Tri–Circuit)
							474B	696458	Alternator (10 Amp)
							479	691627	Screw (Oil Pump Screen) (Used Before Code Date 94110700).

★ Engine Gasket Set – Reference 358
● Carburetor Overhaul Kit – Reference 121
∅ Carburetor Overhaul Kit – Reference 121A

◆ Carburetor Gasket Set – Reference 977
▽ Carburetor Gasket Set – Reference 977A
△ Valve Gasket Set – Reference 1095, 1095A

28Q700

REF. NO.	PART NO.	DESCRIPTION	REF. NO.	PART NO.	DESCRIPTION	REF. NO.	PART NO.	DESCRIPTION
493	690493	Bracket-Mounting (Front)	552	491986	Bushing-Governor Crank	676	396903	Deflector-Muffler
493A	690494	Bracket-Mounting (Rear)	559	690661	Screw (Remote Choke Stop)	676A	393761	Deflector-Muffler
493B	694475	Bracket-Mounting	562	691119	Bolt (Governor Control Lever)	677	690661	Screw (Muffler Deflector)
493C	691177	Bracket-Mounting	578	692306	Wire Assembly	691	★692407	Seal-Governor Shaft
500	691086	Washer (Key Switch)	579	691029	Nut (Starter Cable)	692	690572	Spring-Detent
501	691185	Regulator (10 & 16 Amp)	601	95162	Clamp-Hose (Green)	695	693109	Screw (Ring Gear)
501A	691188	Regulator (5 & 9 Amp)	601A	691038	Clamp-Hose (Black)	697	690372	Screw (Drive Cap)
503	691532	Strap-Starter (Used Before Code Date 99070600).	607	690703	Screw (Air Cleaner Brace)	697A	691058	Screw (Drive Cap)
505	691251	Nut (Governor Control Lever)	607A	691693	Screw (Air Cleaner Brace)	711	690703	Screw (Carburetor Shield)
510	693699	Drive-Starter (Used With Steel Ring Gear)	613	691416	Screw (Exhaust Muffler)	718	690959	Pin-Locating
510A	696541	Drive-Starter (Used With Aluminum & Plastic Ring Gears)	613A	691678	Screw (Exhaust Muffler)	725	690420	Shield-Heat
510B	696540	Drive-Starter	613B	692198	Screw (Exhaust Muffler)	726		Gear-Ring (Steel)
513	692024	Clutch-Drive	614	691620	Pin-Cotter			(See Reference 23 for Service)
521	690581	Shield-Cable	616	692012	Crank-Governor	726A	696537	Gear-Ring (Aluminum)
523	692014	Dipstick	617	Δ★692138	Seal-O Ring (Intake Manifold)			(Services Plastic Ring Gear Only)
524	★281370	Seal-Dipstick Tube	628	690661	Screw (Fuel Pump Bracket)	727	490324	Cover-Starter Drive
525	691398	Tube-Dipstick	633	695414	Seal-Choke/Throttle Shaft (Choke)	729	691335	Clip-Wire (Wiring Harness/Solenoid)
526	694476	Screw (Regulator) (Used After Code Date 99070500).	634	●690801	Spring/Seal Assembly (LMT 155)	729A	224723	Clip-Wire (Starter Motor)
		Note	634A	●690802	Spring/Seal Assembly (LMT 154)	732	691002	Screw (Starter Drive Cover)
		690326 Screw (Regulator) (Used Before Code Date 99070600).	635	691909	Boot-Spark Plug	733	698139	Screw (Crankshaft Extension) (Without Washer)
526A	692598	Screw (Regulator)	646	690460	Brace-Air Cleaner	737	691118	Screw (Oil Filter Adapter)
544	692034	Armature-Starter (3 5/8" Housing Length)	654	690958	Nut (Carburetor)	741	691284	Gear-Timing
544A	390837	Armature-Starter (3 5/8" Housing Length)	664	691087	Nut (Key Switch)	750	691033	Screw (Oil Pump Cover) (Used After Code Date 98063000).
		Note	668	690510	Spacer (Fuel Pump)	750A	692198	Screw (Oil Pump Cover) (Used Before Code Date 98070100).
		490309 Armature-Starter (4 3/8" Housing Length)	668A	691215	Spacer (Rotating Screen)	757	691714	Link-Counterweight
			668B	691500	Spacer (Rotating Screen)	758	692423	Counterweight
						759	691239	Pin-Counterweight
						761	691096	Screw (Counterweight)

★ Engine Gasket Set - Reference 358
 ● Carburetor Overhaul Kit - Reference 121
 ∅ Carburetor Overhaul Kit - Reference 121A

◆ Carburetor Gasket Set - Reference 977
 ∇ Carburetor Gasket Set - Reference 977A
 Δ Valve Gasket Set - Reference 1095, 1095A

28Q700

REF. NO.	PART NO.	DESCRIPTION	REF. NO.	PART NO.	DESCRIPTION	REF. NO.	PART NO.	DESCRIPTION
783	693713	Gear–Pinion (Steel Ring Gear Only)	851	692424	Terminal–Spark Plug	943	690589	Seal–O Ring (Oil Pump Cover)
783A	695708	Gear–Pinion	863	691204	Bracket–Muffler			(Used After Code Date 98063000).
788	692133	Bracket–Fuel Pump	863A	691205	Bracket–Muffler	943A	★690604	Seal–O Ring (Oil Pump Cover)
789	692037	Harness–Wiring	864	496750	Adapter–Muffler			(Used Before Code Date 98070100).
797	693167	Nut (Brush Retainer)	864A	697346	Adapter–Muffler Used on Type No(s). 0155, 0639, 0655, 0671, 0672, 0679, 0692.	947	692734	Solenoid–Fuel
801	691283	Cap–Drive	868	Δ★690968	Seal–Valve	947A	695423	Solenoid–Fuel (Nikki)
802	691286	Cap–End	875	696129	Base–Air Cleaner	947B	497672	Solenoid–Fuel
802A	395537	Cap–End (3 5/8" Housing Length)	876	696539	Kit–Pinion Spring	958	698183	Valve–Fuel Shut Off
803	693757	Housing–Starter (3 5/8" Housing Length)	877	393456	Wire/Connector– Alternator (Dual Circuit)	965	499613	Cover–Oil Pump (Used After Code Date 98063000).
		(4 3/8" Housing Length) (Serviced by Reference 309)	877A	393537	Wire/Connector– Alternator (Tri Circuit)	965A	496745	Cover–Oil Pump (Used Before Code Date 98070100).
803A	398159	Housing–Starter (3 5/8" Housing Length)	877B	399916	Wire/Connector– Alternator (10 & 16 Amp Circuit)	967	272403	Filter–Pre Cleaner
		Note ——— 494205 Housing– Starter	878	691237	Harness–Alternator	968	692355	Cover–Air Cleaner
		(4 3/8" Housing Length)	878A	691955	Harness–Alternator	969	690365	Screw (Blower Housing Cover)
810	691779	Extension–Crankshaft	883	Δ★692236	Gasket–Exhaust	969A	691108	Screw (Blower Housing Cover)
813	690635	Clamp	884	690853	Clamp–Muffler	971	692129	Screw (Air Cleaner Base) (Used After Code Date 97100500).
819	690297	Screw (Muffler Bracket)	892	692318	Switch–Key			Note ——— 690810 Screw (Air Cleaner Base) (Used Before Code Date 97100600).
819A	691678	Screw (Muffler Bracket)	896	691641	Pin–Drive Retainer	975	495933	Bowl–Float
819B	691676	Screw (Muffler Bracket)	914	691108	Screw (Rocker Cover)	975A	695417	Bowl–Float
823	698941	Screw (Muffler Adapter)	918	393815	Hose–Vacuum (Cut to Required Length)	977	690192	Gasket Set–Carburetor
830	691095	Stud–Rocker Arm	920	692656	Solenoid–Starter	977A	695428	Gasket Set–Carburetor (Nikki)
842	★691870	Seal–O Ring	921	690495	Cover–Blower Housing (Red)	987	●691326	Seal–Throttle Shaft
847	496415	Dipstick/Tube Assembly			Note ——— 690496 Cover–Blower Housing (Black) 225175 Cover–Blower Housing (Black) Used on Type No(s). 0168, 0668.	987A	692001	Seal–Throttle Shaft (LMT 33, 34)
			934	691058	Screw (Fan Retainer)	987B	●698777	Seal–Throttle Shaft
						988	★691317	Gasket–Oil Adapter
						990	691959	Key Set
						994	392390	Arrestor–Spark
						996	690678	Shield–Air Cleaner

★ Engine Gasket Set – Reference 358
● Carburetor Overhaul Kit – Reference 121
∅ Carburetor Overhaul Kit – Reference 121A

0295–15

Assemblies include all parts shown in frames.

◆ Carburetor Gasket Set – Reference 977
▽ Carburetor Gasket Set – Reference 977A
Δ Valve Gasket Set – Reference 1095, 1095A

08/11/2004

28Q700

REF. NO.	PART NO.	DESCRIPTION	REF. NO.	PART NO.	DESCRIPTION	REF. NO.	PART NO.	DESCRIPTION
1005	697853	Fan-Flywheel	1036	695700	Label-Emissions (Used After Code Date 00063000).	1058	274789	Operator's Manual (Emissions)
1006	690452	Retainer-Fan						Note ———
1017	690770	Screen-Oil Pump (Used After Code Date 98071900).			694997 Label-Emissions			272904 Operator's Manual (Non Emissions)
1017A	691216	Screen-Oil Pump			(Used After Code Date 99093000 and Before Code Date 00070100).	1059	698516	Kit-Screw/Washer (Alternator)
1017B	225019	Screen-Oil Pump (Used Before Code Date 94110700).			694318 Label-Emissions	1070	690372	Screw (Flywheel Fan)
1019	496758	Kit-Label			(Used Before Code Date 99010100 and After Code Date 98123100).	1083	690958	Nut (End Cap) (Serrated)
1022	Δ*272475	Gasket-Rocker Cover			499364 Label-Emissions	1083A	691626	Nut (End Cap)
1023	692492	Cover-Rocker			(Used Before Code Date 99010100 and After Code Date 98123100).	1090	691293	Retainer-Brush
1023A	691192	Cover-Rocker			499363 Label-Emissions	1091	691333	Cap-Limiter
1024	499054	Pump-Oil (Used After Code Date 98063000).			(Used Before Code Date 99010100 and After Code Date 97052500).	1095	691581	Gasket Set-Valve (Used After Code Date 97100500).
1024A	493884	Pump-Oil (Used Before Code Date 98070100).			1051 691265 Ring-Retaining	1095A	495992	Gasket Set-Valve (Used Before Code Date 97100600).
1026	692003	Rod-Push (Intake)	1054	280275	Tie-Cable	1119	691183	Screw (Alternator)
		Note ———	1055	690528	Tube-Oil Pump	1127	695407	Screw (Float Bowl)
		692011 Rod-Push (Exhaust)				1330	272147	Repair Manual
1027	492932	Filter-Oil						
1028	496744	Adapter-Oil Filter						
1029	691751	Arm-Rocker						
1032	491710	Ball-Oil Pump						
1034	690822	Guide-Push Rod						
1035	693784	Shaft-Pump (Used After Code Date 98063000).						

★ Engine Gasket Set – Reference 358
 ● Carburetor Overhaul Kit – Reference 121
 ∅ Carburetor Overhaul Kit – Reference 121A
0295-16

◆ Carburetor Gasket Set – Reference 977
 ∇ Carburetor Gasket Set – Reference 977A
 Δ Valve Gasket Set – Reference 1095, 1095A

Assemblies include all parts shown in frames.

08/11/2004