

28N700

Illustrated Parts List

Model Series

28N700

TYPE NUMBERS
0101 through 1205.

TABLE OF CONTENTS

Air Cleaner	5
Alternator	9
Blower Housing/Shrouds	7
Cams	2
Carburetor	4
Controls	6
Crankcase Cover/Sump	2
Crankshaft	2
Cylinder	2
Electric Starter	10
Flywheel	8
Fuel Tank	6
Head	3
Ignition	9
Kits/Gaskets-Carburetor	4
Kits/Gaskets-Cylinder	2
Kits/Gaskets-Valve	3
Muffler	5
Oil	3
Piston Group	2
Rewind	8
Valves	3

PRINTED IN U.S.A.



COPYRIGHT by BRIGGS & STRATTON CORPORATION
 All rights reserved. No part of this material may be reproduced or transmitted, in any form or by any means, electronic or mechanical, including photocopying, recording or by any information storage and retrieval system, without permission in writing from Briggs & Stratton Corporation.

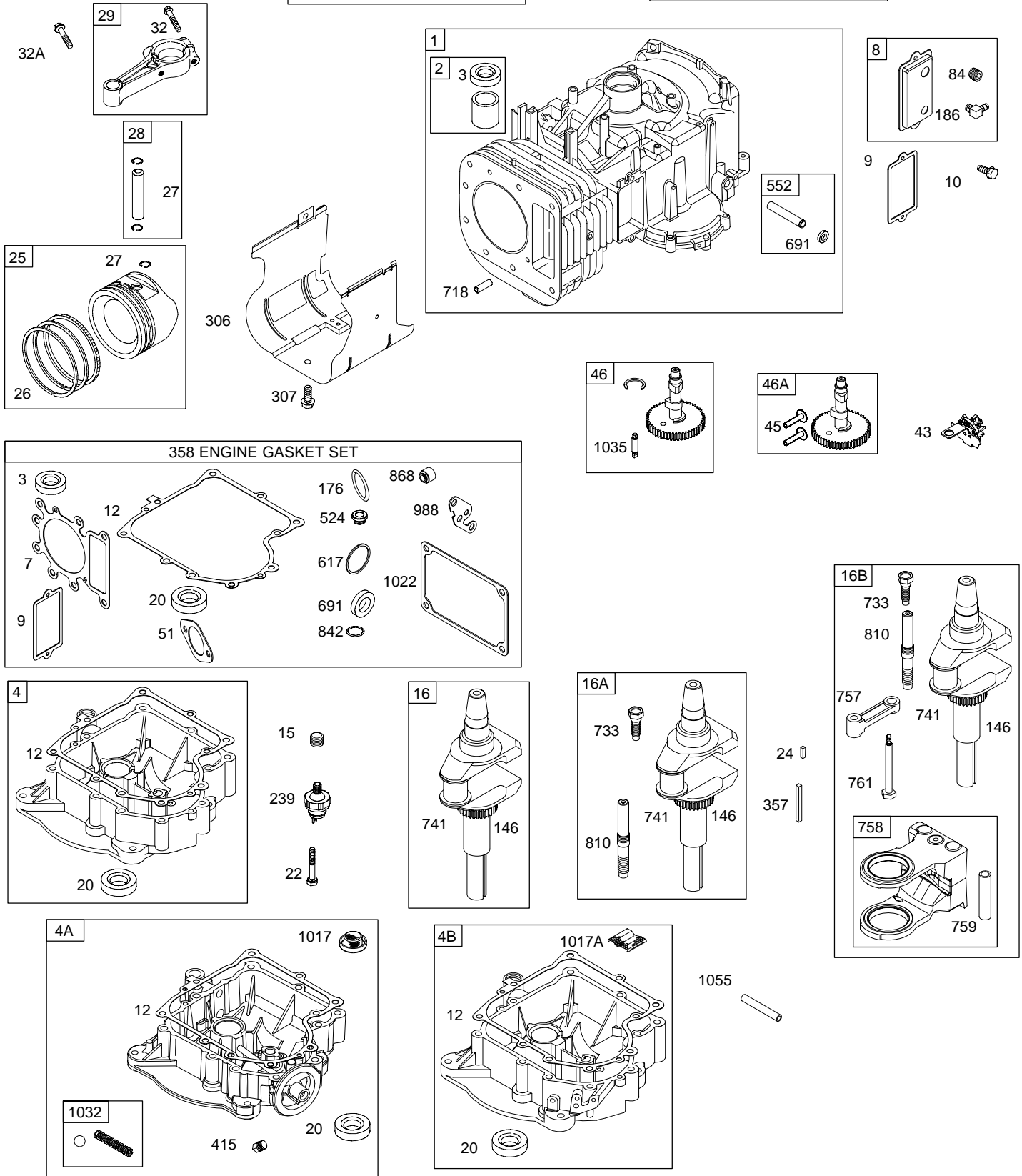


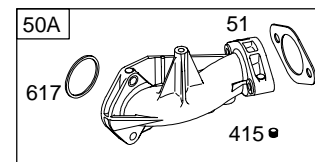
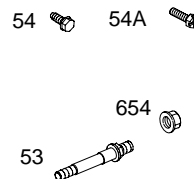
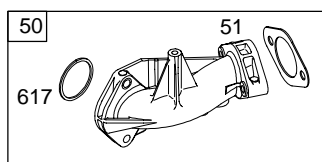
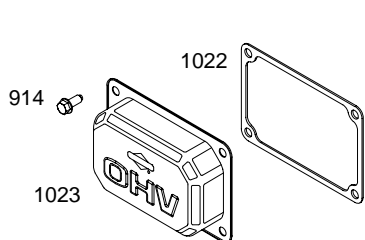
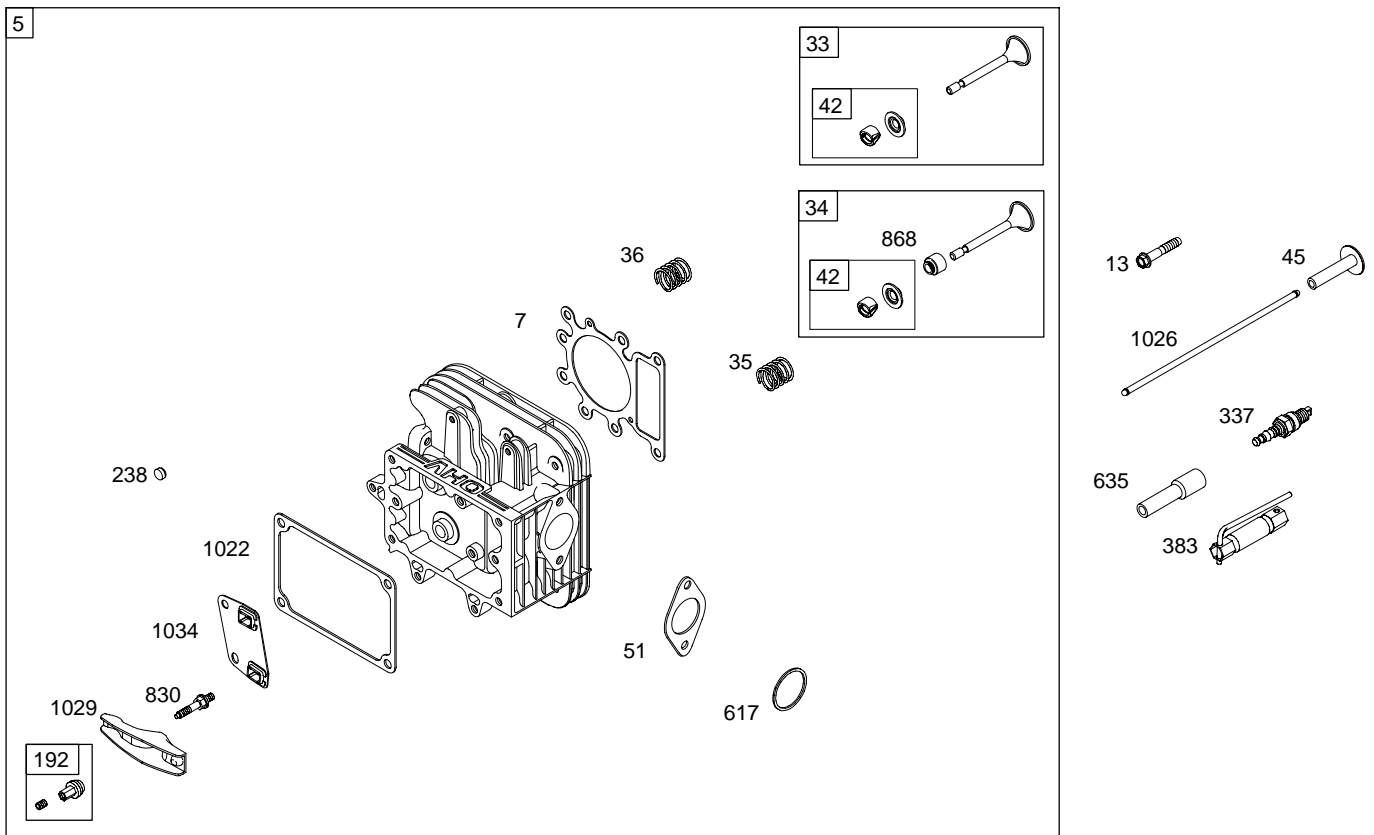
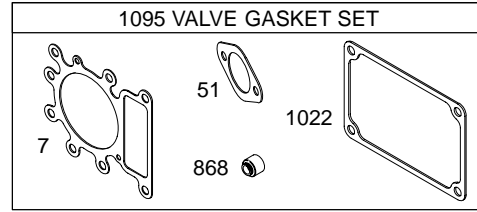
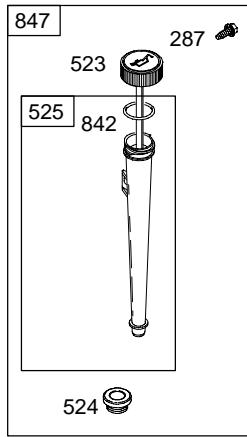
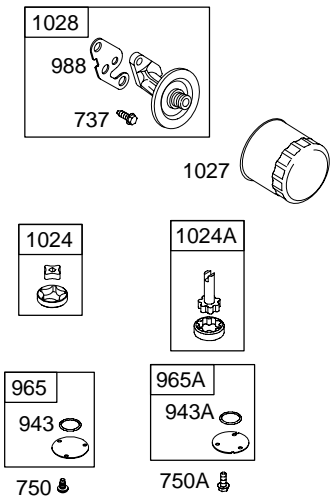
0 24847 08846 5

28N700

1058 OPERATOR'S MANUAL

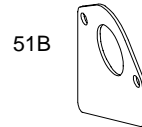
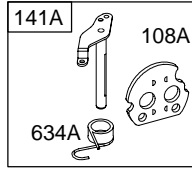
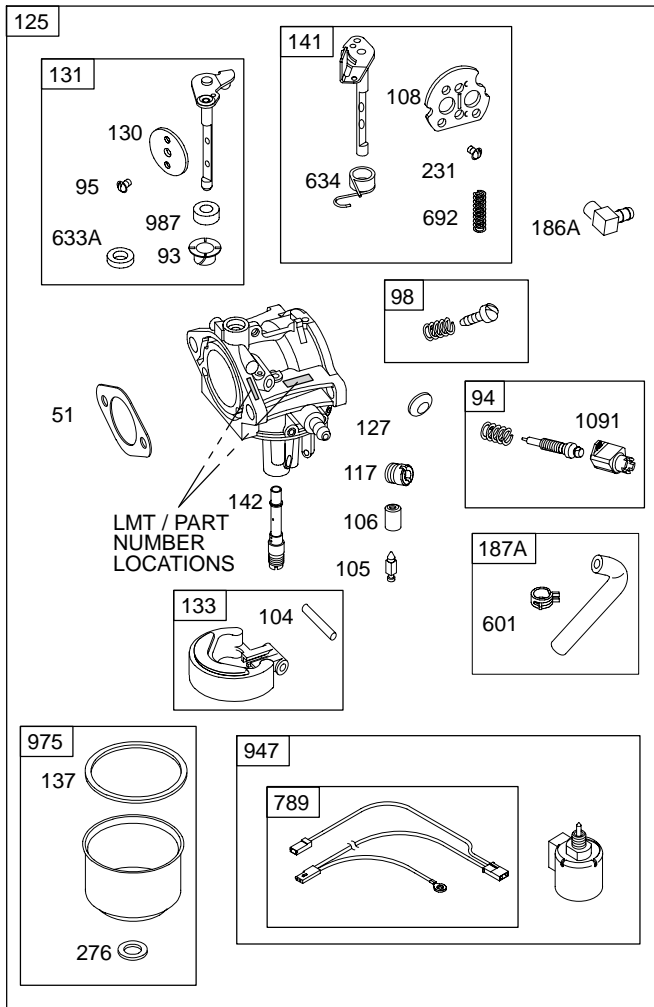
1330 REPAIR MANUAL



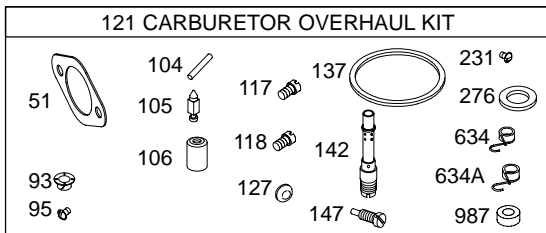
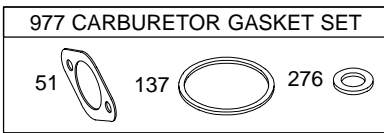
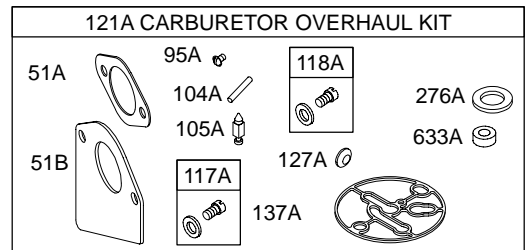
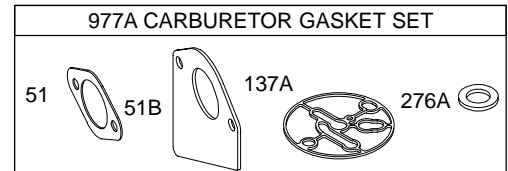
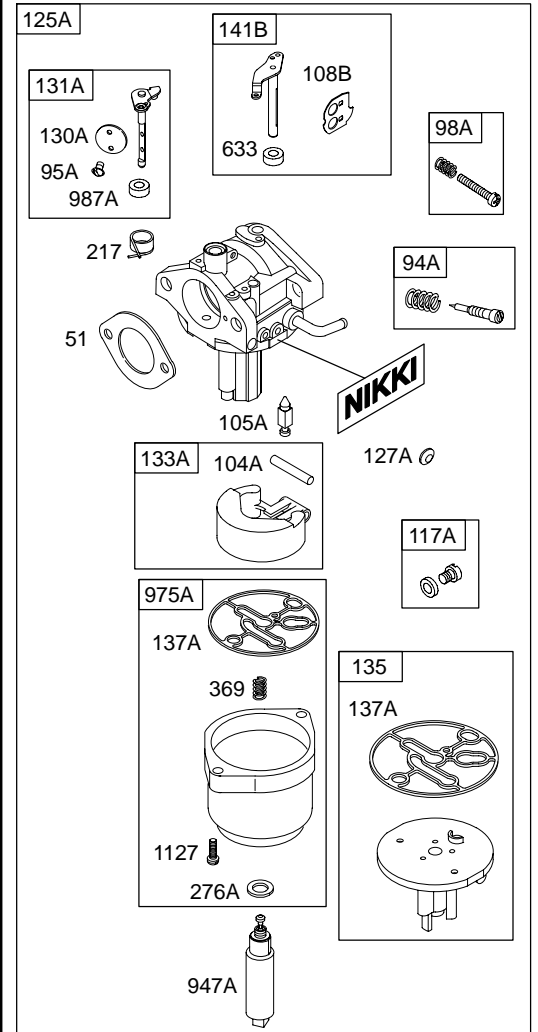


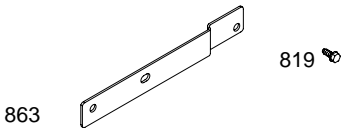
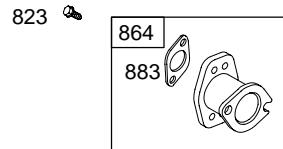
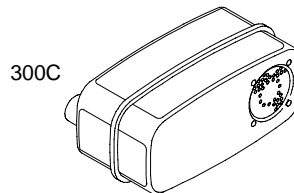
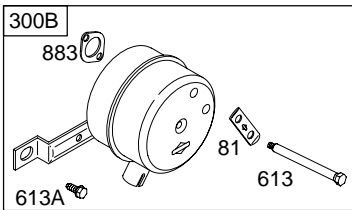
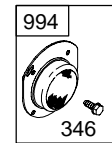
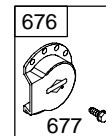
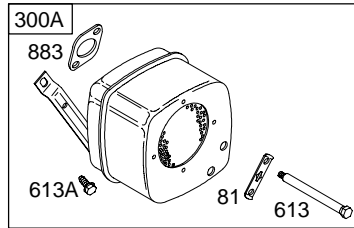
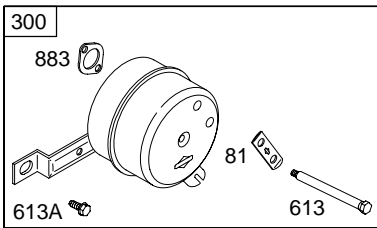
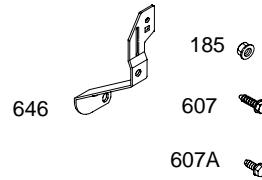
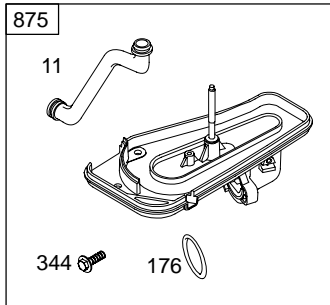
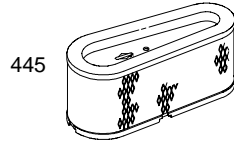
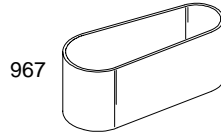
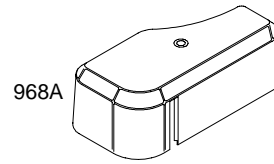
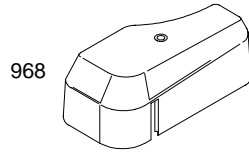
28N700

WALBRO

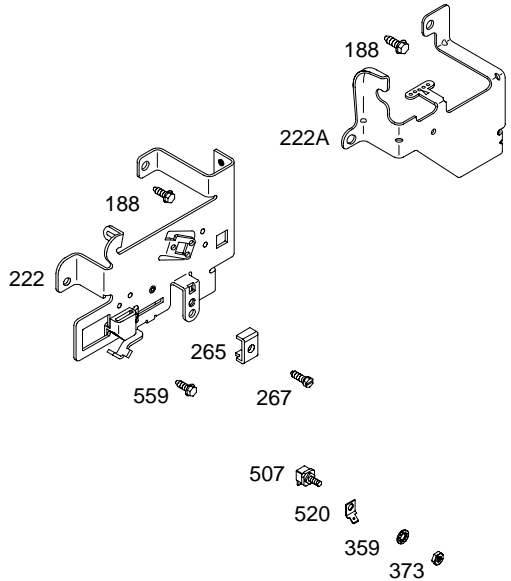
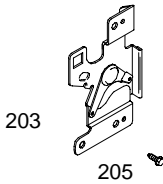
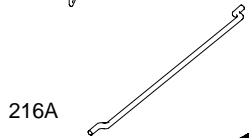
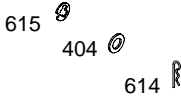
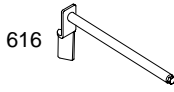
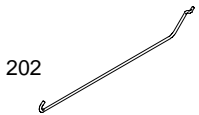
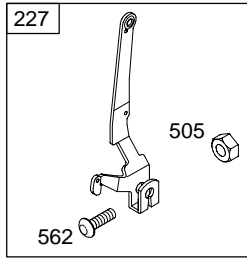
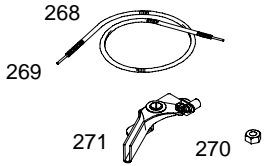
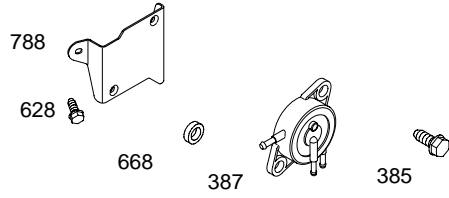
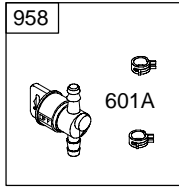
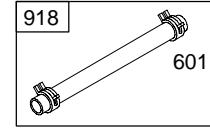
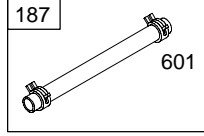
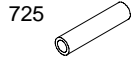


NIKKI



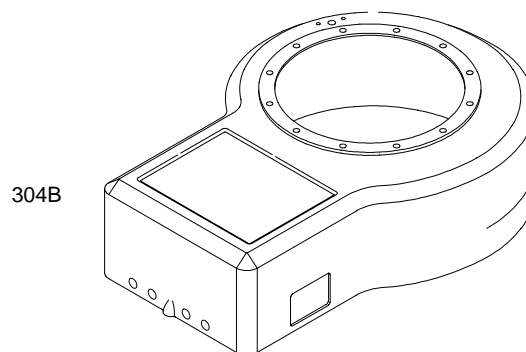
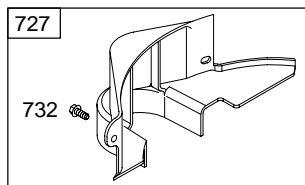
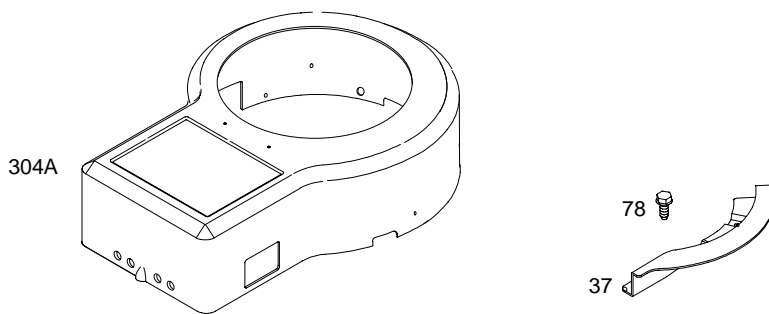
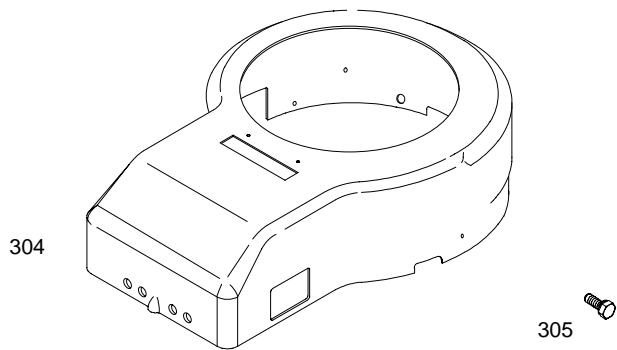


28N700

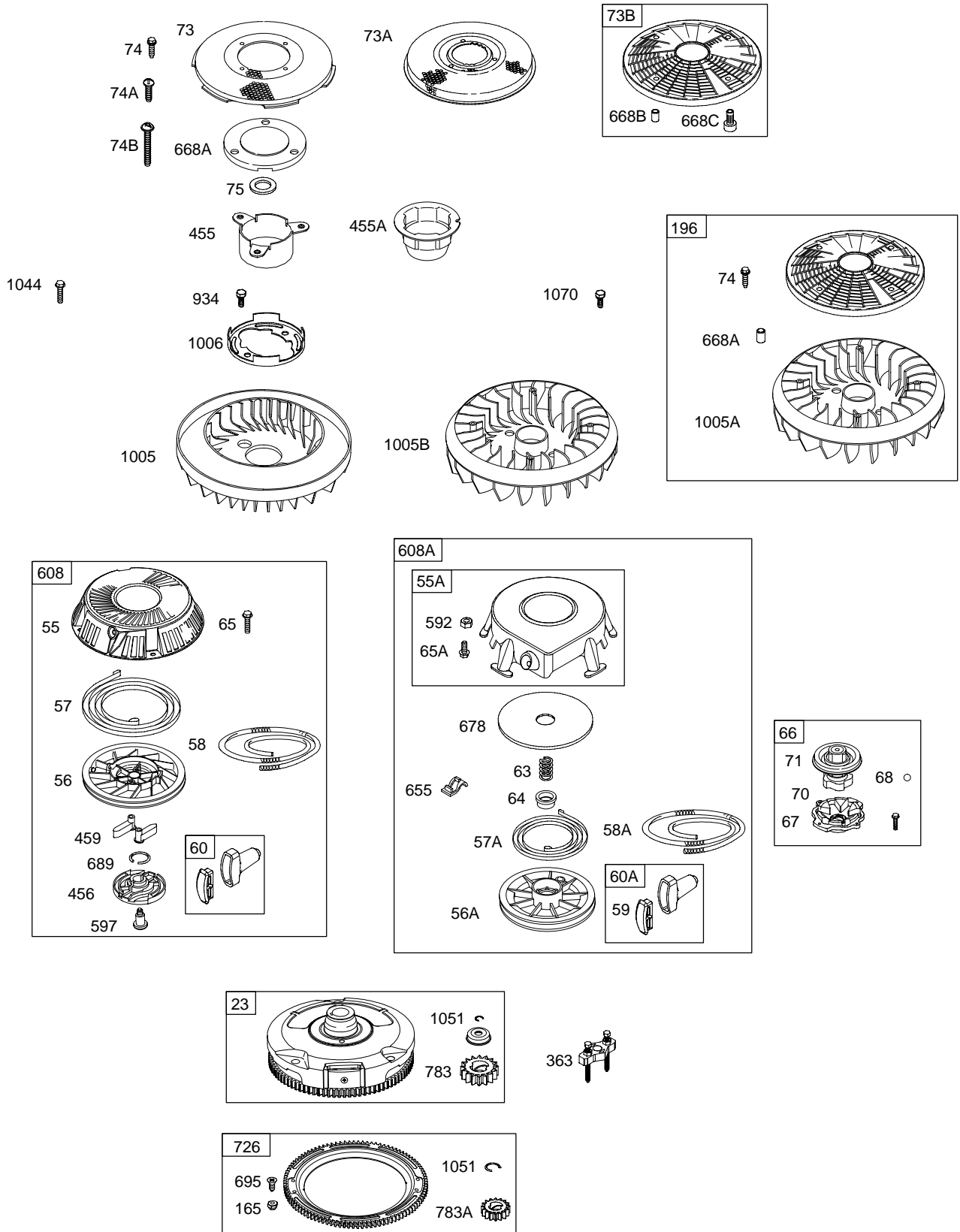


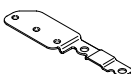
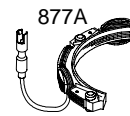





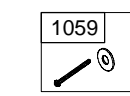
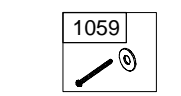
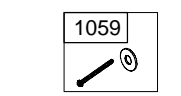
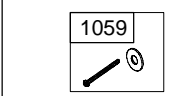

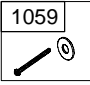
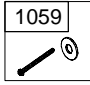
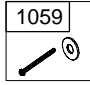
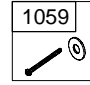
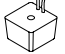


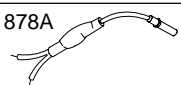

1019 LABEL KIT

1036 EMISSION LABEL

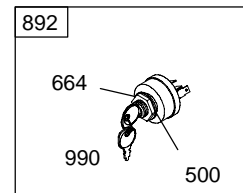
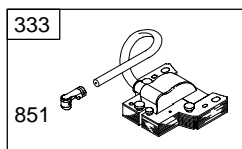
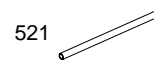
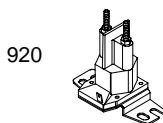
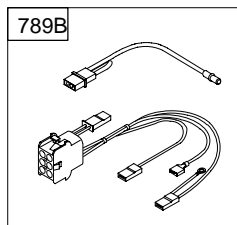
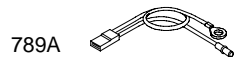
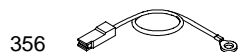


28N700

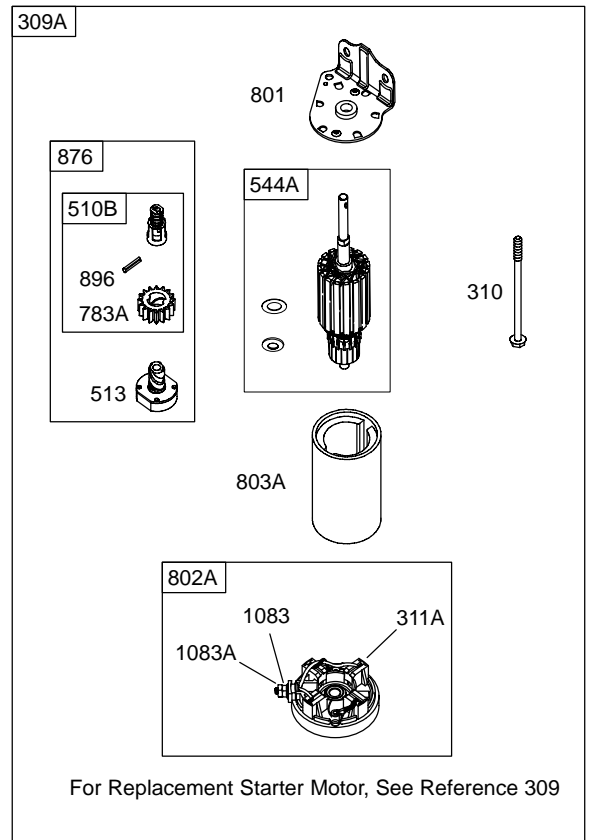
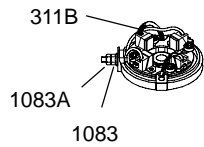
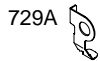
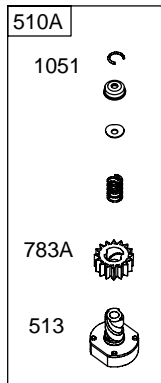
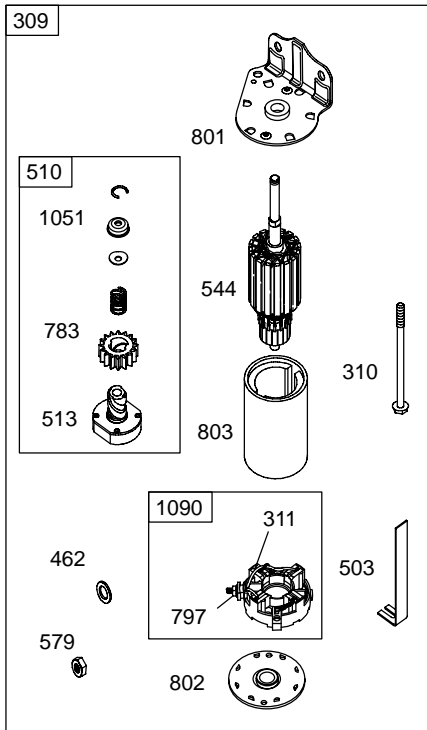


	DC ONLY	DUAL CIRCUIT	TRI CIRCUIT	10 /16 AMP	
493 	474 	474A 	474B 	474C 	813 
493A 	877A 	877 	877B 	877C 	526 
	1059 	1059 	1059 	1059 	501 
	578 	878 	878A 	578 	

NOTE: ALL OLD STYLE STATORS USE
REFERENCE NUMBER 1119 MOUNTING SCREW



28N700



REF. NO.	PART NO.	DESCRIPTION	REF. NO.	PART NO.	DESCRIPTION	REF. NO.	PART NO.	DESCRIPTION
1	496412	Cylinder Assembly	16	690136	Crankshaft (Used After Code Date 98063000).			Note 499284 Piston Assembly (Standard) (Used Before Code Date 01041900).
2	399265	Kit-Bushing/Seal (Magneto Side)	16A	693944	Crankshaft (Used After Code Date 95073100).			499292 Piston Assembly (.020" Oversize) (Used Before Code Date 01041900).
3	★391086	Seal-Oil (Magneto Side)	16B	693653	Crankshaft (Used Before Code Date 95080100).			
4	494238	Sump-Engine	20	★291675	Seal-Oil (PTO Side)	26	696403	Ring Set (Standard) (Used After Code Date 01041800).
4A	693582	Sump-Engine (Used After Code Date 98063000) Used on Type No(s). 1103, 1130, 1143, 1174, 1178, 1182, 1194.	22	692125	Screw (Crankcase Cover/Sump)			696404 Ring Set (.010" Oversize) (Used After Code Date 01041800).
4B	496742	Sump-Engine (Used Before Code Date 98070100) Used on Type No(s). 0103, 0119, 0130, 0174, 0642, 0682, 1103, 1130, 1143, 1174, 1182.	23	693557	Flywheel (Steel Ring Gear)			696405 Ring Set (.020" Oversize) (Used After Code Date 01041800).
5	698148	Head-Cylinder			Note 693556 Flywheel (Steel Ring Gear) Used on Type No(s). 0036, 0109, 0111, 0114, 0127, 0129, 0138, 0139, 0140, 0142, 0181, 1036, 1109, 1129, 1132, 1138, 1144, 1145, 1181, 1196, 1204, 1205.			696406 Ring Set (.030" Oversize) (Used After Code Date 01041800).
7	Δ★273280	Gasket -Cylinder Head	24	222698	Key-Flywheel			Note 495854 Ring Set (Standard) (Used Before Code Date 01041900).
8	696126	Breather Assembly	25	696397	Piston Assembly (Standard) (Used After Code Date 01041800).			495851 Ring Set (.020" Oversize) (Used Before Code Date 01041900).
9	★27803	Gasket-Breather			696399 Piston Assembly (.020" Oversize) (Used After Code Date 01041800).			495855 Ring Set (.030" Oversize) (Used Before Code Date 01041900).
10	691666	Screw (Breather Assembly)			696400 Piston Assembly (.030" Oversize) (Used After Code Date 01041800).			
11	691328	Tube-Breather						
12	★692226	Gasket-Crankcase (.015" Thick) (Standard) Note ★692406 Gasket-Crankcase (.005" Thick) ★692405 Gasket-Crankcase (.009" Thick)						
13	690360	Screw (Cylinder Head)						
15	690946	Plug-Oil Drain Note 691680 Plug-Oil Drain Used on Type No(s). 0137, 0166, 0642, 0666, 1118, 1143, 1166.						

★ Engine Gasket Set - Reference 358
● Carburetor Overhaul Kit - Reference 121

◆ Carburetor Gasket Set - Reference 977
⊘ Valve Gasket Set - Reference 1095

28N700

REF. NO.	PART NO.	DESCRIPTION	REF. NO.	PART NO.	DESCRIPTION	REF. NO.	PART NO.	DESCRIPTION
27	691299	Lock-Piston Pin (Used After Code Date 95101500). Note ——— 691792 Lock-Piston Pin (Used Before Code Date 95101600).	32	692852	Screw (Connecting Rod) (1 5/8" Long) (Used After Code Date 98063000). Note ——— 690356 Screw (Connecting Rod) (1 7/8" Long) (Used Before Code Date 98070100).	51★◆	692137	Gasket-Intake (Used After Code Date 97100500)
28	498319	Pin-Piston (Standard) (Used After Code Date 95101500). Note ——— 299691 Pin-Piston (Standard) (Used Before Code Date 95101600). 498320 Pin-Piston (.005" Oversize) (Used After Code Date 95101500). 391286 Pin-Piston (.005" Oversize) (Used Before Code Date 95101600).	32A	690348	Screw (Connecting Rod) (1 5/8" Long) (Used Before Code Date 98070100).	51A	★272569	Gasket-Intake (Used Before Code Date 97100600).
29	692419	Rod-Connecting (Standard) (Used After Code Date 98063000). Note ——— 494504 Rod-Connecting (Standard) (Used Before Code Date 98070100). 692420 Rod-Connecting (.020" Undersize) (Used After Code Date 98063000). 495490 Rod-Connecting (.020" Undersize) (Used Before Code Date 98070100).	33	695760	Valve-Exhaust	51B★◆	◆692284	Gasket-Intake
			34	695761	Valve-Intake	53	690227	Stud (Carburetor)
			35	691279	Spring-Valve (Intake)	54	691148	Screw (Intake Manifold) (Used After Code Date 97100500).
			36	691279	Spring-Valve (Exhaust)	54A	690953	Screw (Intake Manifold) (Used Before Code Date 97100600).
			37	690456	Guard-Flywheel	55	695130	Housing-Rewind Starter
			42	499586	Keeper-Valve	55A	393576	Housing-Rewind Starter
			43	691968	Slinger-Governor/Oil	56	695129	Pulley-Starter
			45	690564	Tappet-Valve	56A	295871	Pulley-Starter
			46	698492	Camshaft (Used After Code Date 98063000).	57	695131	Spring-Rewind Starter
			46A	790340	Camshaft (Used Before Code Date 98070100). Used on Type No(s). 0103, 0119, 0130, 0174, 0642.	57A	490179	Spring-Rewind Starter
			50	690193	Manifold-Intake	58	695132	Rope-Starter (59" Long)
			50A	695527	Manifold-Intake Used on Type No(s). 1118.	58A	695002	Rope-Rewind Starter (99" Long) (Cut to Required Length)
						59	490653	Insert-Grip
						60	494212	Grip-Starter Rope
						60A	490652	Grip-Starter Rope
						63	690547	Spring-Ratchet
						64	691920	Adapter-Ratchet Spring

★ Engine Gasket Set – Reference 358
● Carburetor Overhaul Kit – Reference 121

◆ Carburetor Gasket Set – Reference 977
∅ Valve Gasket Set – Reference 1095

28N700

REF. NO.	PART NO.	DESCRIPTION	REF. NO.	PART NO.	DESCRIPTION	REF. NO.	PART NO.	DESCRIPTION
65	690837	Screw (Rewind Starter)	95	●691636	Screw (Throttle Valve)	118	232116	Jet–Main (High Altitude) (LMT 149, 150)
65A	695453	Screw (Rewind Starter)	95A	●690718	Screw (Throttle Valve)			———— Note ———
66	399671	Clutch–Starter	98	495800	Kit–Idle Speed			692411 Jet–Main (High Altitude)
67	394897	Housing–Clutch	98A	695408	Kit–Idle Speed			(LMT 153, 154, 155, 697481, 697482)
68	691604	Ball–Clutch	104	●690525	Pin–Float Hinge			231850 Jet–Main (High Altitude)
70	691945	Ratchet–Clutch	104A	●694918	Pin–Float Hinge			(LMT 33, 34, 73, 74, 76, 121, 122, 125, 126, 128, 129, 130, 132, 137, 138)
71	691359	Cover–Ratchet	105	●231855	Valve–Float Needle			
73	691191	Screen–Rotating	105A	●696136	Valve–Float Needle			
73A	690492	Screen–Rotating	106	●690577	Seat–Inlet (Gravity Feed)			
73B	494439	Screen–Rotating			———— Note ———			
74	691627	Screw (Rotating Screen)			●691780 Seat–Inlet (Pump Feed)	118A	●695416	Jet–Main (High Altitude)
74A	691655	Screw (Rotating Screen)	108	690464	Valve–Choke (Used on Manual Choke)	121	690191	Kit–Carburetor Overhaul (Used After Code Date 97100500).
74B	698425	Screw (Rotating Screen) (Used After Code Date 00040200).	108A	692344	Valve–Choke (Used on Choke A Matic)			———— Note ———
		———— Note ———	108B	695419	Valve–Choke			499233 Kit–Carburetor Overhaul (Used After Code Date 96072500 and Before Code Date 97100600).
		691674 Screw (Rotating Screen) (Used Before Code Date 00040300).	117	692408	Jet–Main (Standard) (LMT 149, 150, 153, 154, 155 and 697481, 697482)			498116 Kit–Carburetor Overhaul (Used Before Code Date 96072600).
75	690582	Washer (Flywheel)			———— Note ———	121A	695427	Kit–Carburetor Overhaul
78	690661	Screw (Flywheel Guard)			●697228 Jet–Main (Standard) (LMT 33, 34, 73, 74, 76, 121, 122, 125, 126, 128, 129, 130, 132, 137, 138)			
81	691178	Lock–Muffler Screw			694352 Jet–Main (Standard) Used on Type No(s). 1194.			
84	690343	Plug–Breather						
93	●690602	Bushing–Throttle Shaft						
94	498030	Kit–Idle Mixture (LMT 153, 154, 155 156)						
		———— Note ———	117A	●695415	Jet–Main (Standard)			
		496589 Kit–Idle Mixture (LMT 149, 150)						
		498032 Kit–Idle Mixture (LMT 121, 122, 125, 129, 130, 137, 138)						
94A	695425	Kit–Idle Mixture						

★ Engine Gasket Set – Reference 358
● Carburetor Overhaul Kit – Reference 121

◆ Carburetor Gasket Set – Reference 977
⊘ Valve Gasket Set – Reference 1095

28N700

REF. NO.	PART NO.	DESCRIPTION	REF. NO.	PART NO.	DESCRIPTION	REF. NO.	PART NO.	DESCRIPTION
125	698620	Carburetor (Gravity Feed) ———— Note ———— 693773 Carburetor (Pump Feed) Used on Type No(s). 1194. 698782 Carburetor (Pump Feed) (LMT 153, 156 and 697480) (Used After Code Date 96022700). Used on Type No(s). 0112, 0117, 0122, 0127, 0138, 0141, 0142, 0189, 0612, 1117, 1122, 1138, 1141, 1142, 1144, 1145, 1189, 1192, 1201.	142	●692412	Nozzle–Carburetor (LMT 149, 150, 153, 154, 155, 156) ———— Note ———— ●231990 Nozzle–Carburetor (LMT 33, 34, 73, 74, 121, 122, 125, 126, 128, 129, 130, 132, 137, 138)	209	692208	Spring–Governor (Green) ———— Note ———— 690480 Spring–Governor (Red) Used on Type No(s). 0108, 0111, 0112, 0127, 0128, 0140, 0163, 0612, 1128. 691795 Spring–Governor (Yellow) Used on Type No(s). 0109, 0114, 0122, 0129, 0138, 0139, 0189, 1109, 1122, 1129, 1132, 1138, 1139, 1189, 1192, 1201, 1203, 1204. 260902 Spring–Governor Used on Type No(s). 1119.
125A		Carburetor (Nikki) (Service with Walbro Carburetor, Gravity Feed)	146	691639	Key–Timing	216	691840	Link–Choke
127	●695005	Plug–Welch	147	●231985	Jet–Pilot (LMT 73, 74, 121, 122, 125, 129, 130, 137, 138) ———— Note ———— ●497472 Jet–Pilot (LMT 33, 34)	216A	691281	Link–Choke
127A	●694530	Plug–Welch	165	693148	Nut (Ring Gear)	217	695409	Spring–Choke Return
130	691750	Valve–Throttle	167	692297	Seal–Air Cleaner Nut	222	694042	Bracket–Control
130A	695418	Valve–Throttle	176	★691917	Seal–O Ring (Air Cleaner Base)	222A	694335	Bracket–Control Used on Type No(s). 1194.
131	494379	Kit–Throttle Shaft	185	690958	Nut (Air Cleaner Base)	227	691374	Lever–Governor Control
131A	695421	Kit–Throttle Shaft	186	691609	Connector–Hose (Breather Assembly)	231	●691636	Screw (Choke Valve)
133	494381	Float–Carburetor	186A	692317	Connector–Hose (Carburetor)	232	691842	Spring–Governor Link
133A	694914	Float–Carburetor	187	691050	Line–Fuel (Cut To Required Length)	238	691843	Cap–Valve
135	696142	Tube–Fuel Transfer	187A	699331	Line–Fuel (Formed) (10.25" Long) (Cut to Required Length)	239	694115	Switch–Oil Pressure Used on Type No(s). 1194.
137	●♦281165	Gasket–Float Bowl			———— Note ———— 699332 Line–Fuel (Formed) (21" Long) (Cut to Required Length)	240	298090	Filter–Fuel (Red) ———— Note ———— 394358 Filter–Fuel (White)
137A	●♦695426	Gasket–Float Bowl	188	691693	Screw (Control Bracket)	265	691024	Clamp–Casing
141	495097	Kit–Choke Shaft (Manual Choke) ———— Note ———— 693769 Kit–Choke Shaft (Manual Choke) Used on Type No(s). 1194.	192	691986	Adjuster–Rocker Arm	267	690804	Screw (Casing Clamp)
141A	495931	Kit–Choke Shaft (Choke A Matic)	196	695493	Fan/Screen Assembly	268	691025	Casing–Control Wire (Cut to Required Length)
141B	695420	Kit–Choke Shaft	202	691841	Link–Mechanical Governor			
			203	691381	Crank–Bell			
			205	691693	Screw (Bell Crank)			

★ Engine Gasket Set – Reference 358
● Carburetor Overhaul Kit – Reference 121

◆ Carburetor Gasket Set – Reference 977
⊘ Valve Gasket Set – Reference 1095

28N700

REF. NO.	PART NO.	DESCRIPTION	REF. NO.	PART NO.	DESCRIPTION	REF. NO.	PART NO.	DESCRIPTION
269	691026	Wire—Control (Cut to Required Length)	309	693551	Motor—Starter (3 5/8" Housing Length) (Steel Ring Gear Only)	311	497608	Brush Set
270	691027	Nut (Control Wire Casing)			Note	311A	395538	Brush Set (3 5/8" Housing Length)
271	691028	Lever—Control			693552	311B	490311	Brush Set (4 9/16" Housing Length)
276	◆692255	Washer—Sealing			(4 3/8" Housing Length)	333	492341	Armature—Magneto
276A	◆695410	Washer—Sealing			(Steel Ring Gear Only)	334	691061	Screw (Magneto Armature)
287	691002	Screw (Dipstick Tube)			497595	337	491055	Plug—Spark
300	495805	Muffler			(3 5/8" Housing Length)	344	693675	Screw (Cable Clamp)
300A	496022	Muffler			(Plastic Ring Gear Only)	346	690661	Screw (Spark Arrestor)
300B	495882	Muffler Used on Type No(s). 0115, 0130, 1115, 1130.			497401	356	398808	Wire—Stop Used on Type No(s). 1189, 1192, 1201.
300C	498984	Muffler Used on Type No(s). 0122, 0189, 1122, 1189, 1192.			(Plastic Ring Gear Only)	356A	690807	Wire—Stop
304	691399	Housing—Blower (Red)			693054	357	691483	Key—Drive Pulley
		Note			(3 5/8" Housing Length) (Aluminum Ring Gear Only)	358	691580	Gasket Set—Engine (Used After Code Date 97100500).
		690847			499521			Note
		Housing— Blower (Black) Used on Type No(s). 0112, 0114, 0117, 0120, 0131, 0132, 0141, 0142, 0174, 0612, 0631, 0635, 1117, 1120, 1131, 1135, 1141, 1142, 1143, 1174, 1194.			(4 3/8" Housing Length) (Aluminum Ring Gear Only)			495993
					Motor—Starter (For Replacement Starter Motor, order from Reference 309)			Gasket Set—Engine (Used Before Code Date 97100600).
304A	695065	Housing—Blower (Black)	309A		310	690323		359
		Note			Screw (Starter Motor) (3 5/8" Housing Length)			691077
		690844						Washer (Ground Terminal)
		Housing— Blower (Red) Used on Type No(s). 1118, 1119, 1178.						363
								19203
304B	690846	Housing—Blower (Black) Used on Type No(s). 0111, 1128.						Puller—Flywheel
								369
								695422
305	691108	Screw (Blower Housing)						Spring—Float Bowl
306	698454	Shield—Cylinder						373
307	691003	Screw (Cylinder Shield)						691612
								Nut (Ground Terminal)
								383
								89838
								Wrench—Spark Plug
								385
								691108
								Screw (Fuel Pump)
								387
								808656
								Pump—Fuel
								404
								691691
								Washer (Governor Crank)
								415
								690283
								Plug (Oil Pressure Switch)
								445
								496894
								Filter—Air Cleaner Cartridge
								455
								691173
								Cup—Flywheel
								455A
								695113
								Cup—Flywheel Used on Type No(s). 1128.

★ Engine Gasket Set – Reference 358
● Carburetor Overhaul Kit – Reference 121

◆ Carburetor Gasket Set – Reference 977
⊘ Valve Gasket Set – Reference 1095

28N700

REF. NO.	PART NO.	DESCRIPTION	REF. NO.	PART NO.	DESCRIPTION	REF. NO.	PART NO.	DESCRIPTION
456	695128	Plate-Pawl Friction	544	692034	Armature-Starter (3 5/8" Housing Length)	633	695414	Seal-Choke/Throttle Shaft
459	281505	Pawl-Ratchet				633A	●690998	Seal-Choke/Throttle Shaft
462	691261	Washer (Starter Cable)	544A	390837	Armature-Starter (3 5/8" Housing Length)	634	●690801	Spring/Seal Assembly (Manual Choke)
467	691668	Knob-Air Cleaner			Note	634A	●690802	Spring/Seal Assembly (Choke A Matic)
474	696578	Alternator (DC Only)			490309	635	691909	Boot-Spark Plug
474A	696459	Alternator (Dual Circuit)			Armature-Starter (4 3/8" Housing Length)	646	690460	Brace-Air Cleaner
474B	696457	Alternator (Tri Circuit)	552	491986	Bushing-Governor Crank	654	690958	Nut (Carburetor)
474C	696458	Alternator (10/16 Amp)	559	690661	Screw (Remote Choke Stop)	655	691734	Anchor-Rewind Spring
493	694475	Bracket-Mounting (Regulator)	562	691119	Bolt (Governor Control Lever)	664	691087	Nut (Key Switch)
493A	691177	Bracket-Mounting (Regulator)	578	692306	Wire Assembly Used on Type No(s). 0036, 0111, 0114, 0127, 0128, 1036, 1128, 1204.	668	690510	Spacer (Fuel Pump)
500	691086	Washer (Key Switch)	579	691029	Nut (Starter Cable)	668A	691323	Spacer
501	691188	Regulator	592	690800	Nut (Rewind Starter)	668B	691215	Spacer (Rotating Screen)
503	691532	Strap-Starter	597	691696	Screw (Pawl Friction Plate)	668C	691500	Spacer (Rotating Screen)
505	691251	Nut (Governor Control Lever)	601	95162	Clamp-Hose	676	393761	Deflector-Muffler
507	691972	Insulator	601A	691038	Clamp-Hose (Black)	677	690661	Screw (Muffler Deflector)
510	693699	Drive-Starter (Steel Ring Gear)	607	690703	Screw (Air Cleaner Brace)	678	490817	Spacer-Rewind
510A	696541	Drive-Starter (Used With Aluminum and Plastic Ring Gears)	607A	691693	Screw (Air Cleaner Brace)	689	691855	Spring-Friction
510B	656540	Drive-Starter	608	695058	Starter-Rewind Used on Type No(s). 1128.	691	★692407	Seal-Governor Shaft
513	692024	Clutch-Drive	608A	390391	Starter-Rewind	692	690572	Spring-Detent (LMT 155, 156 and 697482, 697483)
520	691084	Terminal-Ground	613	691416	Screw (Muffler)			Note
521	690581	Shield-Cable	613A	691678	Screw (Muffler)			691301
523	692014	Dipstick	614	691620	Pin-Cotter	695	693109	Screw (Ring Gear)
524	★281370	Seal-Dipstick Tube	615	93307	Retainer-Governor Shaft	697	690372	Screw (Drive Cap)
525	691398	Tube-Dipstick	616	692012	Crank-Governor	697A	691058	Screw (Drive Cap)
526	694476	Screw (Regulator) (Used After Code Date 99070500).	617	★692138	Seal-O Ring (Intake Manifold) (Used After Code Date 97100500).	711	690703	Screw (Carburetor Shield)
		Note	628	690661	Screw (Fuel Pump Bracket)	718	690959	Pin-Locating
		690326				725	690403	Shield-Heat
		Screw (Regulator) (Used Before Code Date 99070600).				726	696537	Gear-Ring (Aluminum) (Services Plastic Ring Gear Only)

★ Engine Gasket Set - Reference 358
● Carburetor Overhaul Kit - Reference 121

◆ Carburetor Gasket Set - Reference 977
∅ Valve Gasket Set - Reference 1095

28N700

REF. NO.	PART NO.	DESCRIPTION	REF. NO.	PART NO.	DESCRIPTION	REF. NO.	PART NO.	DESCRIPTION
727	490324	Cover–Starter Drive	797	693167	Nut (Brush Retainer)	878	691237	Harness–Alternator (Used Before Code Date 01090400).
729	691335	Clip–Wire (Fuel Solenoid)	801	691283	Cap–Drive	878A	691955	Harness–Alternator
729A	224723	Clip–Wire (Starter)	802	691286	Cap–End	883	★692236	Gasket–Exhaust
732	691002	Screw (Starter Drive Cover)	802A	395537	Cap–End (3 5/8" Housing Length)	892	692318	Switch–Key
733	691658	Screw (Crankshaft Extension)	803	693757	Housing–Starter (3 5/8" Housing Length)	896	691641	Pin–Drive Retainer
737	691118	Screw (Oil Filter Adapter)				914	691108	Screw (Rocker Cover)
741	691284	Gear–Timing				918	393815	Hose–Vacuum (Cut To Required Length)
750	691033	Screw (Oil Pump Cover) (Used After Code Date 98063000). Used on Type No(s). 1103, 1130, 1143, 1174, 1178, 1182, 1194.	803A	398159	Housing–Starter (3 5/8" Housing Length)	920	691656	Solenoid–Starter
750A	692198	Screw (Oil Pump Cover) (Used Before Code Date 98070100). Used on Type No(s). 0103, 0119, 0130, 0174, 0182, 0642, 0682, 1130, 1143, 1174, 1182.				934	691058	Screw (Fan Retainer)
757	691714	Link–Counterweight				943	690589	Seal–O Ring (Oil Pump Cover) (Used After Code Date 98063000). Used on Type No(s). 1103, 1130, 1143, 1174, 1178, 1182, 1194.
758	692423	Counterweight				943A	★690604	Seal–O Ring (Oil Pump Cover) (Used Before Code Date 98070100). Used on Type No(s). 0103, 0119, 0130, 0174, 0182, 0642, 0682, 1130, 1143, 1174, 1182.
759	691239	Pin–Counterweight	810	691779	Extension–Crankshaft	947	692734	Solenoid–Fuel
761	691096	Screw (Counterweight)	813	690635	Clamp	947A	695423	Solenoid–Fuel
783	693713	Gear–Pinion (Steel Ring Gear)	819	690297	Screw (Muffler Bracket)	947B	497672	Solenoid–Fuel (Choke A Matic)
783A	695708	Gear–Pinion (Aluminum and Plastic Ring Gears)	823	698941	Screw (Muffler Adapter)			
788	690458	Bracket–Fuel Pump	830	691095	Stud–Rocker Arm			
789	692037	Harness–Wiring (Fuel Solenoid)	842	★691870	Seal–O Ring (Dipstick Tube)			
789A	693000	Harness–Wiring Used on Type No(s). 0189, 1189, 1192, 1201.	847	496415	Dipstick/Tube Assembly			
789B	698329	Harness–Wiring Used on Type No(s). 1204, 1205.	851	692424	Terminal–Spark Plug			
			863	691204	Bracket–Muffler Used on Type No(s). 1142, 1144.			
			864	697346	Adapter–Muffler			
			868	Δ★690968	Seal–Valve			
			875	696129	Base–Air Cleaner			
			876	696539	Kit–Pinion Spring			
			877	393456	Wire/Connector– Alternator (Dual Circuit)			
			877A	393814	Wire/Connector Alternator (DC Only)			
			877B	393537	Wire/Connector– Alternator (Tri Circuit)			
			877C	399916	Wire/Connector– Alternator (10/16 Amp)			

Note

494205 Housing–Starter
(4 3/8" Housing Length)

★ Engine Gasket Set – Reference 358
● Carburetor Overhaul Kit – Reference 121

◆ Carburetor Gasket Set – Reference 977
⊘ Valve Gasket Set – Reference 1095

28N700

REF. NO.	PART NO.	DESCRIPTION	REF. NO.	PART NO.	DESCRIPTION	REF. NO.	PART NO.	DESCRIPTION
958	698183	Valve–Fuel Shut Off	996	690678	Shield–Carburetor	1036	695700	Label–Emissions
965	496745	Cover–Oil Pump Used on Type No(s). 0103, 0119, 0130, 0174, 0182, 0642, 0682, 1130, 1143, 1174, 1182.	1005	691905	Fan–Flywheel			(Used After Code Date 00063000).
965A	499613	Cover–Oil Pump Used on Type No(s). 1103, 1130, 1143, 1174, 1178, 1182, 1194.	1005A	697853	Fan–Flywheel Used on Type No(s). 1173.			———— Note ———
967	272403	Filter–Pre Cleaner	1005B	695056	Fan–Flywheel			694997 Label–
968	691332	Cover–Air Cleaner	1006	690452	Retainer–Fan			Emissions
968A	691916	Cover–Air Cleaner Used on Type No(s). 0111, 0127, 0128, 1118, 1119, 1128, 1178.	1017	690770	Screen–Oil Pump (Used After Code Date 98063000) Used on Type No(s). 1103, 1130, 1143, 1174, 1182, 1194.			(Used After Code Date 99093000 and Before Code Date 00070100).
971	692129	Screw (Air Cleaner Base to Carburetor) (Used After Code Date 97100500).	1017A	691216	Screen–Oil Pump			694318 Label–
		———— Note ———	1019	496758	Kit–Label			Emissions
		690810 Screw (Air Cleaner Base to Carburetor) (Used Before Code Date 97100600).	1022	Δ★272475	Gasket–Rocker Cover			(Used After Code Date 97063000 and Before Code Date 99010100).
975	495933	Bowl–Float	1023	691192	Cover–Rocker Arm			499364 Label–
975A	695417	Bowl–Float	1024	499054	Pump–Oil (Used After Code Date 98063000). Used on Type No(s). 1103, 1130, 1143, 1174, 1178, 1182, 1194.			Emissions
977	690192	Gasket Set–Carburetor	1024A	493884	Pump–Oil (Used Before Code Date 98070100). Used on Type No(s). 0103, 0119, 0130, 0174, 0182, 0642, 0682, 1130, 1143, 1174, 1182.			(Used Before Code Date 97070100).
977A	695428	Gasket Set–Carburetor	1026	692003	Push Rod (Intake)			499363 Label–
987	●691326	Seal–Throttle Shaft			———— Note ———	1044	698139	Screw (Flywheel)
987A	●698777	Seal–Throttle Shaft			692011 Rod–Push (Exhaust)	1051	691265	Ring–Retaining
988	★691317	Gasket–Oil Adapter	1027	492932	Filter–Oil	1055	690528	Tube–Oil Pump
990	691959	Key Set	1028	496744	Adapter–Oil Filter	1058	275935	Operator’s Manual
994	392390	Arrestor–Spark	1029	691751	Arm–Rocker	1059	698516	Kit–Screw/Washer (Alternator)
			1032	491710	Ball–Oil Pump	1070	690372	Screw (Flywheel Fan)
			1034	690822	Guide–Push Rod	1083	690958	Nut (End Cap) (Serrated)
			1035	693784	Shaft–Pump	1083A	691626	Nut (End Cap)
						1090	691293	Retainer–Brush
						1091	691333	Cap–Limiter
						1095	691581	Gasket Set–Valve (Used After Code Date 97100500).
								———— Note ———
								495992 Gasket Set–Valve (Used Before Code Date 97100600)
						1119	691183	Screw (Alternator)
						1127	695407	Screw (Float Bowl)
						1330	272147	Repair Manual

★ Engine Gasket Set – Reference 358
● Carburetor Overhaul Kit – Reference 121

◆ Carburetor Gasket Set – Reference 977
∅ Valve Gasket Set – Reference 1095