

**196700**

# Illustrated Parts List

## Model Series

# 196700

TYPE NUMBERS  
0101 through 4519.

### TABLE OF CONTENTS

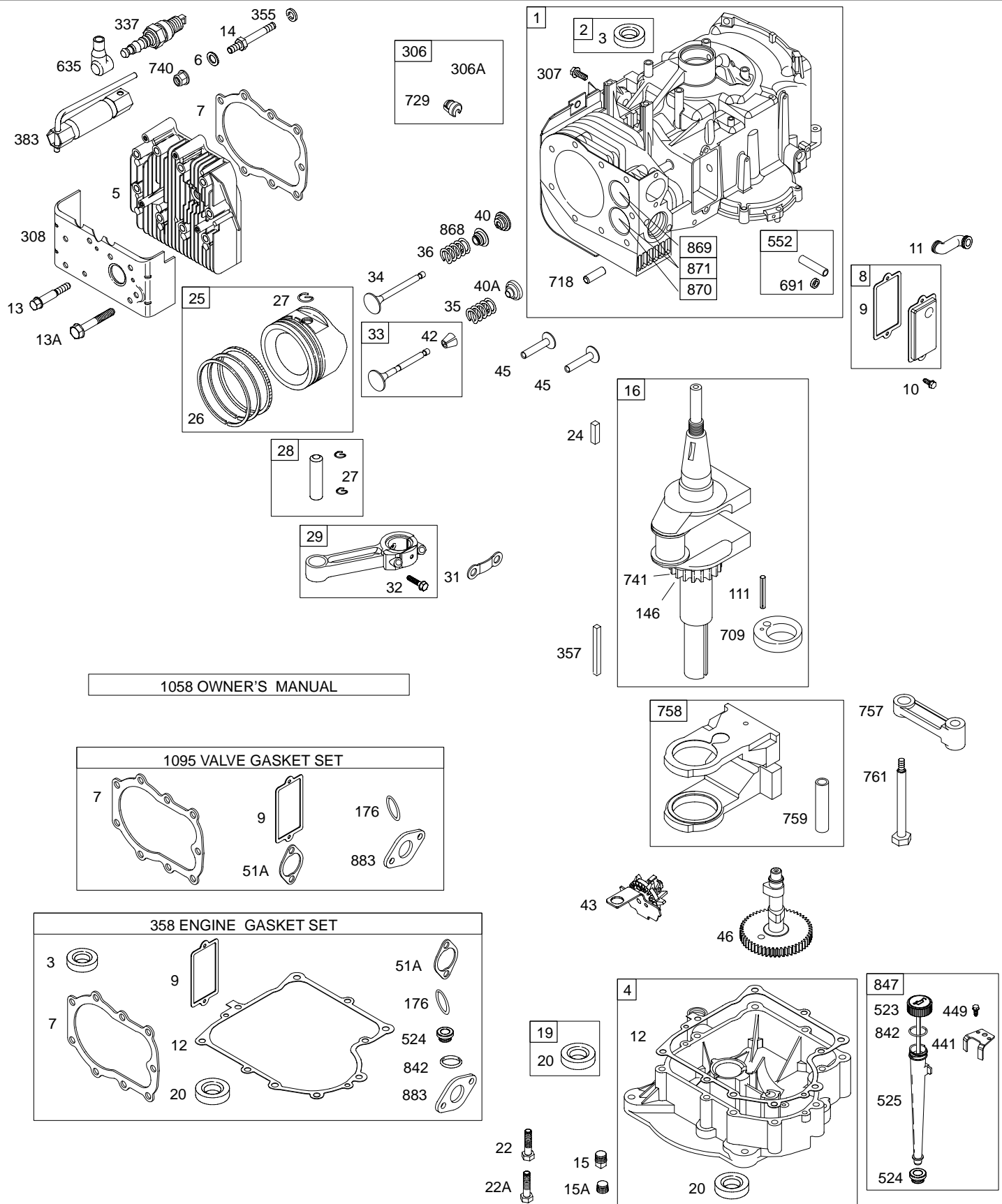
Air Cleaner .....	4
Alternator .....	6
Blower Housing/Shrouds .....	5
Cam .....	2
Carburetor .....	3
Controls .....	4
Crankcase Cover/Sump .....	2
Crankshaft .....	2
Cylinder .....	2
Electric Starter .....	6
Flywheel .....	5
Fuel Tank .....	4
Governor Spring .....	4
Head .....	2
Ignition .....	5
Kits/Gaskets-Carburetor .....	3
Kits/Gaskets-Valve .....	2
Muffler .....	4
Oil .....	2
Piston Group .....	2
Rewind .....	5
Valves .....	2

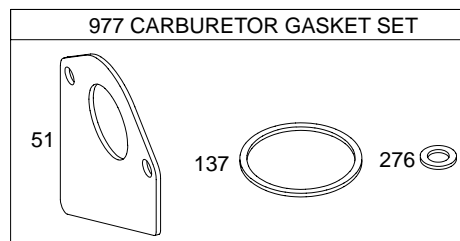
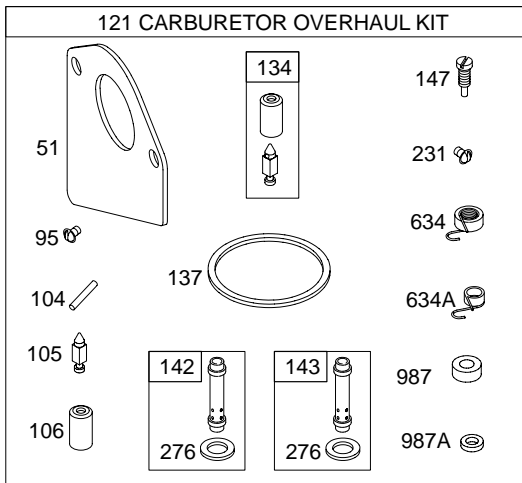
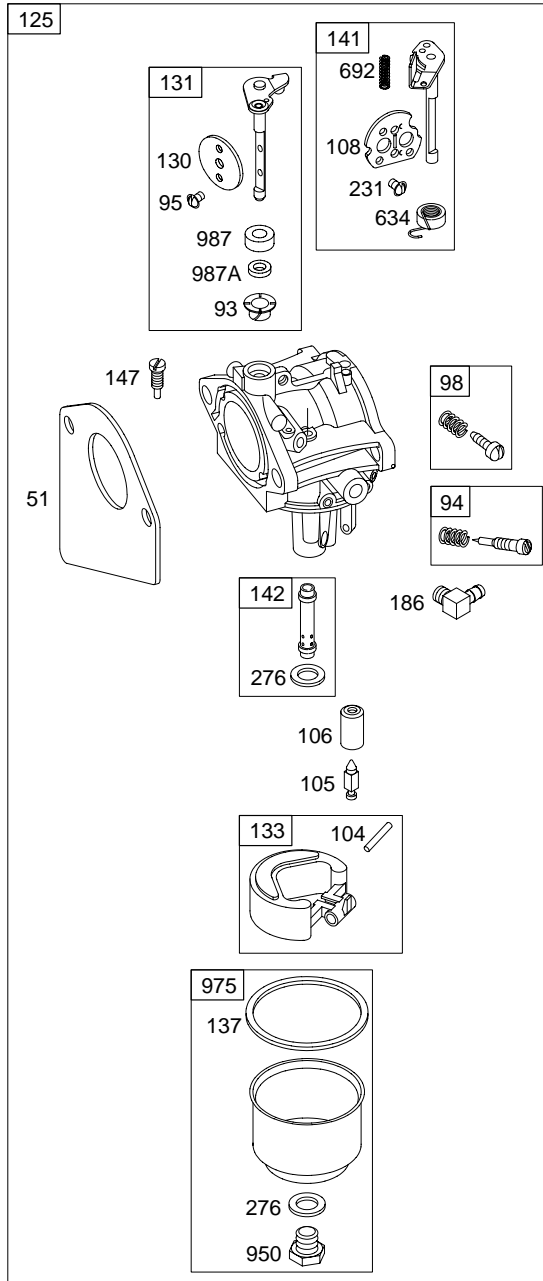
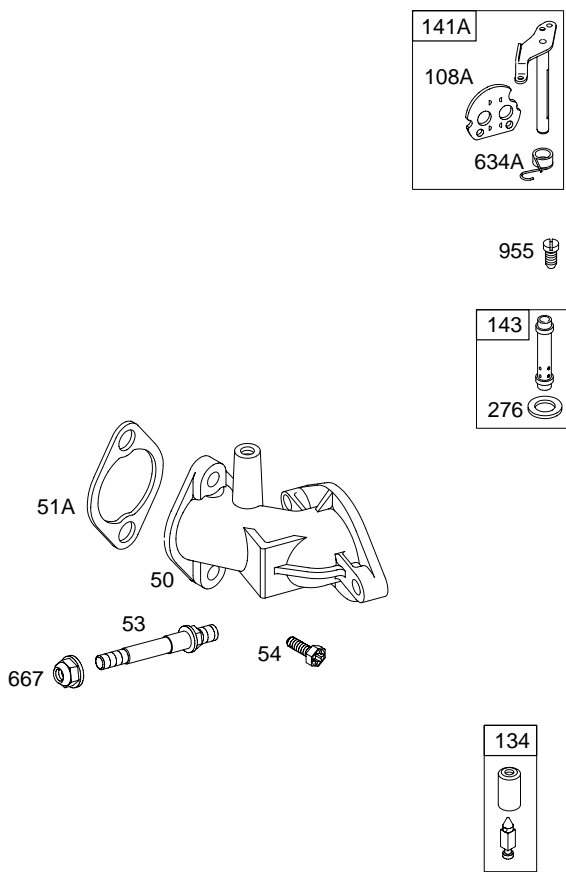
PRINTED IN U.S.A.



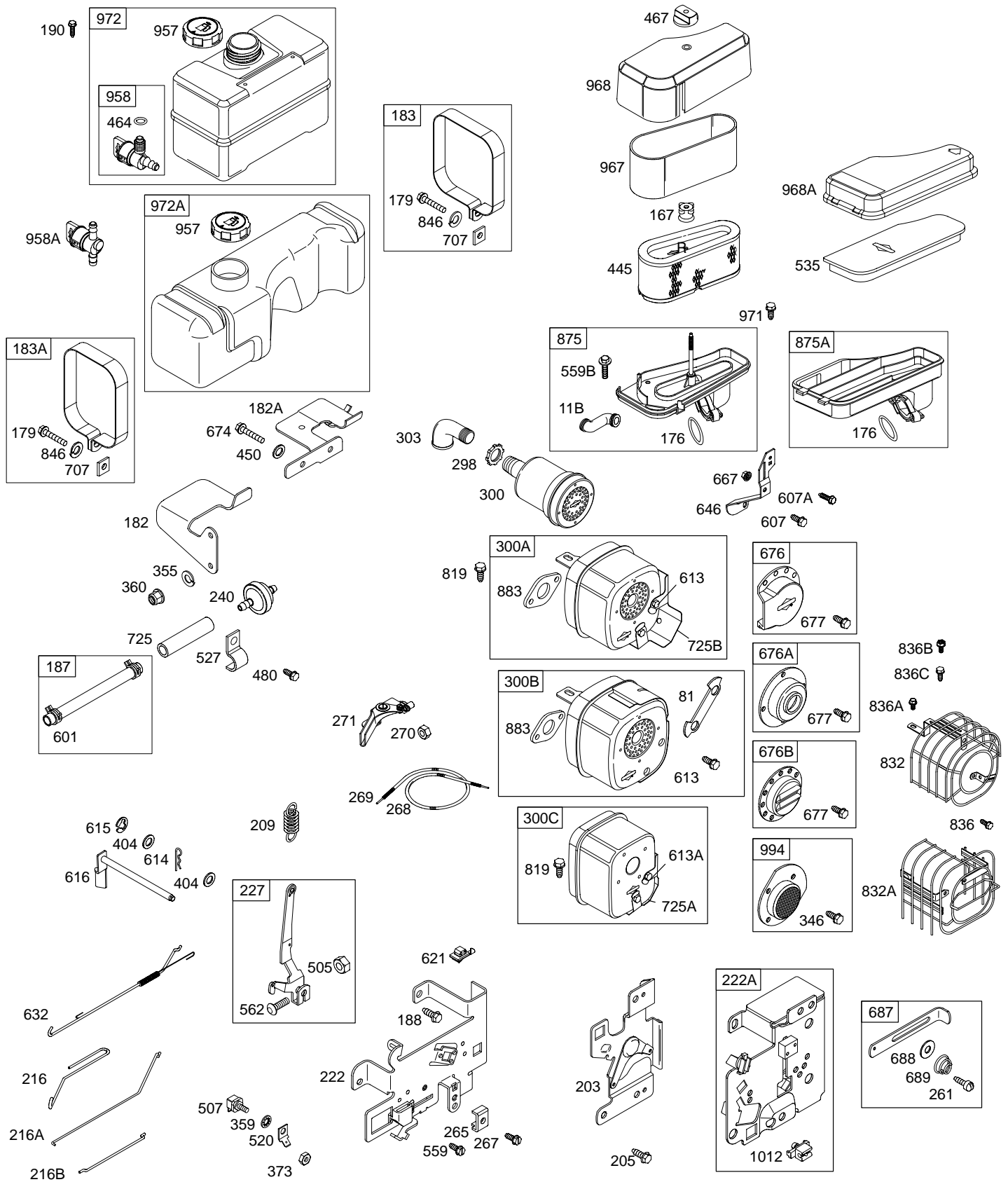
COPYRIGHT by BRIGGS & STRATTON CORPORATION  
 All rights reserved. No part of this material may be reproduced or transmitted, in any form or by any means, electronic or mechanical, including photocopying, recording or by any information storage and retrieval system, without permission in writing from Briggs & Stratton Corporation.

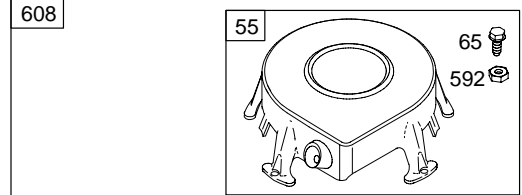
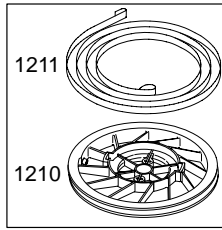
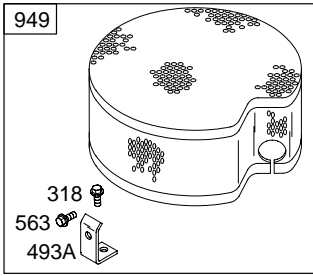
# 196700



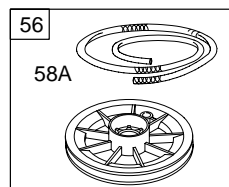
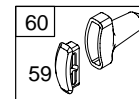
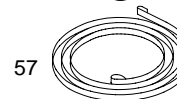
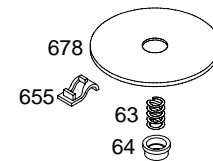
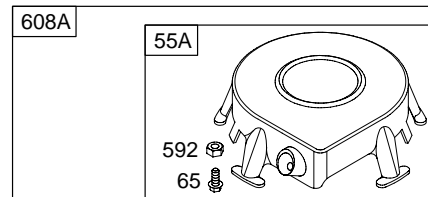
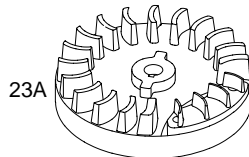
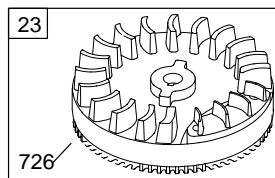
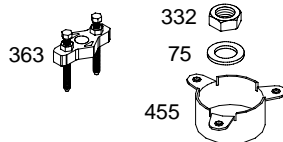
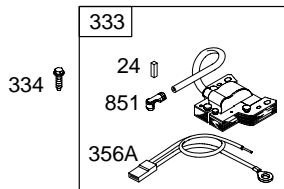
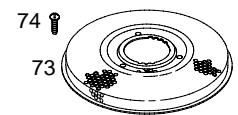
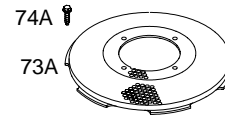
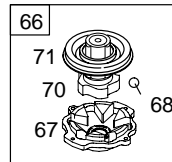
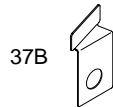
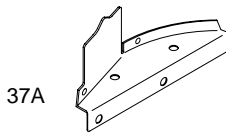
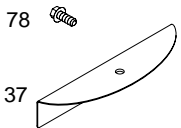
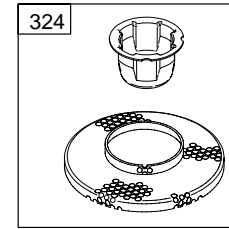
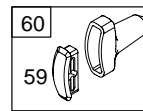
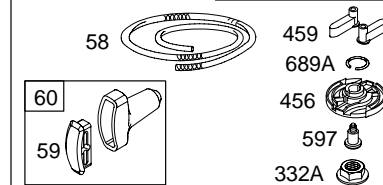
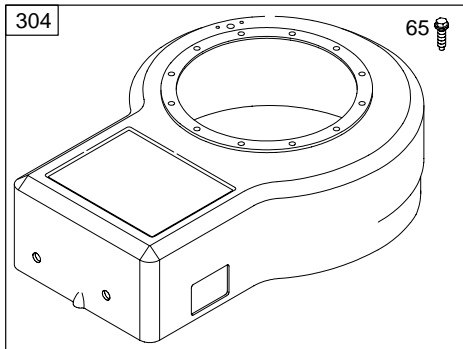
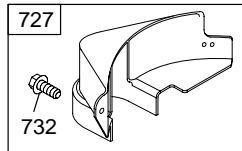
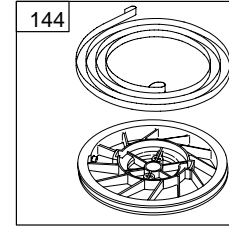
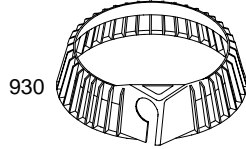


# 196700


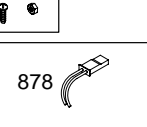
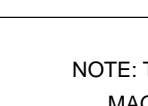
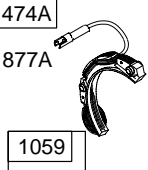
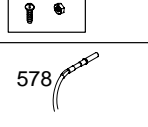
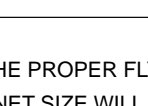
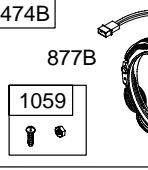
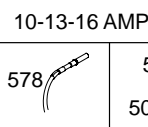
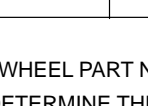
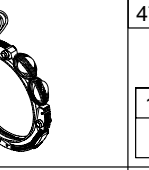
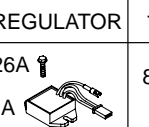
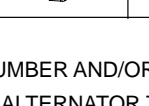


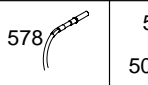

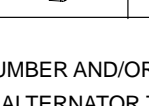
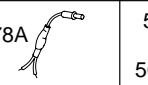




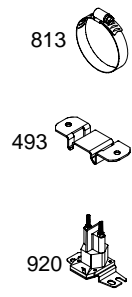


1019 LABEL KIT



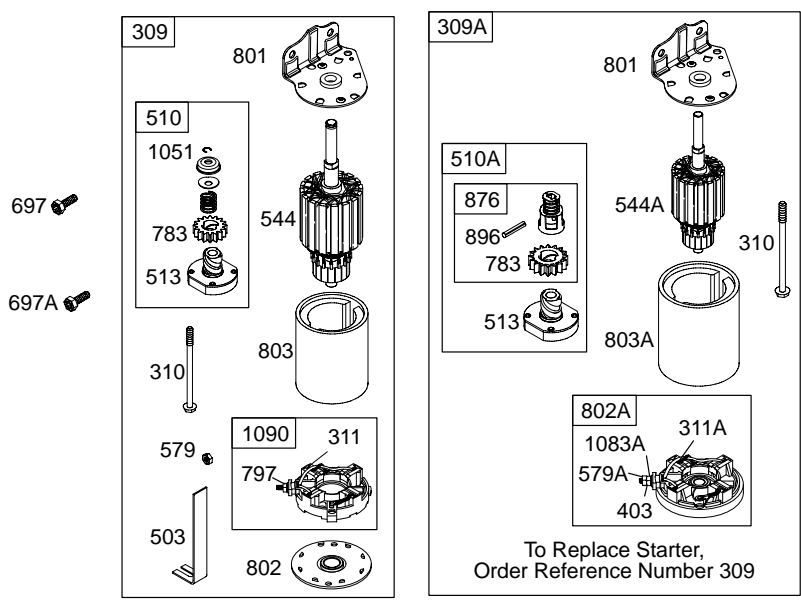
# 196700

DUAL CIRCUIT	DC ONLY	SEE NOTE 10-13-16 AMP STATOR		SEE NOTE TRI-CIRCUIT / OR 5 AMP AND 9 AMP	
474  877  1059 	474A  877A  1059 	474B  877B  1059 	474C  877C  1059 		
		10-13-16 AMP REGULATOR		TRI-CIRCUIT	5 & 9 AMP
878 	578 	578 	526A  501A 	878A 	526  501 



NOTE: THE PROPER FLYWHEEL PART NUMBER AND/OR THE ALTERNATOR MAGNET SIZE WILL DETERMINE THE ALTERNATOR TYPE OR OUTPUT. SEE REPAIR MANUAL FOR ADDITIONAL INFORMATION

NOTE: ALL OLD STYLE STATORS USE REFERENCE NUMBER 1119 MOUNTING SCREW



REF. NO.	PART NO.	DESCRIPTION	REF. NO.	PART NO.	DESCRIPTION	REF. NO.	PART NO.	DESCRIPTION
1	495612	Cylinder Assembly	14	691690	Stud (Cylinder Head) (2 1/2" Long) (Used in Position 5 and 6)	23	691354	Flywheel (Electric Start) ———— <b>Note</b> ——— 690626 Flywheel (Electric Start) Used on Type No(s). 0154.
2	495657	Kit–Bushing/Seal (Magneto Side) (Used After Code Date 92070500). ———— <b>Note</b> ——— 399267 Kit– Bushing/Seal (Magneto Side) (Used Before Code Date 92070600).	15	690946	Plug–Oil Drain	23A	690615	Flywheel (Rewind Start)
3	★391086	Seal–Oil (Magneto Side) (Used After Code Date 92070500). ———— <b>Note</b> ——— ★294606 Seal–Oil (Magneto Side) (Used Before Code Date 92070600).	15A	691680	Plug–Oil Drain Used on Type No(s). 0197, 4009.	24	222698	Key–Flywheel
4	392548	Sump–Engine	16	694054	Crankshaft (Used After Code Date 98111600). ———— <b>Note</b> ——— 495629 Crankshaft (Used Before Code Date 98111700 and After Code Date 92070500).	25	499960	Piston Assembly (Standard) ———— <b>Note</b> ——— 499962 Piston Assembly (.020" Oversize)
5	691715	Head–Cylinder			396876 Crankshaft (Used Before Code Date 92070600).	26	690014	Ring Set (Standard) ———— <b>Note</b> ——— 299743 Ring Set (Standard) (Chrome)
6	691261	Washer (Cylinder Head)			495632 Crankshaft (Used After Code Date 92070500).			690016 Ring Set (.020" Oversize)
7	∅★272163	Gasket–Cylinder Head			495632 Crankshaft (Used After Code Date 92070500).			690017 Ring Set (.030" Oversize)
8	495735	Breather Assembly			Used on Type No(s). 0174, 0188, 4011, 4017, 4027.	27	690975	Lock–Piston Pin (Used After Code Date 96102700). ———— <b>Note</b> ——— 691073 Lock–Piston Pin (Used Before Code Date 96102800).
9	∅★27803	Gasket–Breather			396877 Crankshaft (Used Before Code Date 92070600).			499303 Pin–Piston (.005" Oversize)
10	691666	Screw (Breather Assembly)	19	295963	Kit–Bushing/Seal (PTO Side)	28	499302	Pin–Piston (Standard) ———— <b>Note</b> ——— 499303 Pin–Piston (.005" Oversize)
11	692293	Tube–Breather	20	★391086	Seal–Oil (PTO Side)	29	390402	Rod–Connecting (Standard) ———— <b>Note</b> ——— 390773 Rod– Connecting (.020" Undersize)
11B	692253	Tube–Breather	22	693972	Screw (Crankcase Cover/Sump)			
12	★692221	Crankcase Gasket (.015" Thick) (Standard) ———— <b>Note</b> ——— ★27876 Gasket– Crankcase (.005" Thick) ★27877 Gasket– Crankcase (.009" Thick)	22A	691103	Screw (Crankcase Cover/Sump) (Used in Position 1)			
13	691651	Screw (Cylinder Head) (2 5/8" Long)						
13A	690904	Screw (Cylinder Head) (3" Long)						

★ Engine Gasket Set – Reference 358  
● Carburetor Overhaul Kit – Reference 121

◆ Carburetor Gasket Set – Reference 977  
∅ Valve Gasket Set – Reference 1095

# 196700

REF. NO.	PART NO.	DESCRIPTION	REF. NO.	PART NO.	DESCRIPTION	REF. NO.	PART NO.	DESCRIPTION
31	222114	Lock-Rod Screw	59	490653	Insert-Grip	125	692684	Carburetor
32	690352	Screw (Connecting Rod)	60	490652	Grip-Starter Rope			(LMT 83, 84, 86, 191, 194)
33	691794	Valve-Exhaust	63	690547	Spring-Ratchet			<b>Note</b> _____
34	261055	Valve-Intake	64	691920	Adapter-Ratchet Spring			<b>495782</b> Carburetor
35	691605	Spring-Valve (Intake)	65	690759	Screw (Rewind Starter)			(LMT 87, 88, 90)
36	691597	Spring-Valve (Exhaust)	66	399671	Clutch-Starter			<b>696461</b> Carburetor
37	690411	Guard-Flywheel	67	394897	Housing-Clutch			Used on Type No(s).
		<b>Note</b> _____	68	691604	Ball-Clutch			0105, 0139, 0150,
		<b>692868</b> Guard- Flywheel	70	691945	Ratchet-Clutch			0156, 0164, 0170,
		Used on Type No(s).	71	691359	Cover-Ratchet			0171, 0174, 0192,
		0140, 0147, 0156.	73	691748	Screen-Rotating			0195, 0198, 0202, 4015, 4025, 4027.
37A	690490	Guard-Flywheel	73A	691754	Screen-Rotating	130	690468	Valve-Throttle
37B	690488	Guard-Flywheel	74	691655	Screw (Rotating Screen)	131	494885	Kit-Throttle Shaft
40	690656	Retainer-Valve (Intake)	74A	691627	Screw (Rotating Screen)	133	494381	Float-Carburetor
40A	691939	Retainer-Valve (Exhaust)	75	690582	Washer (Flywheel)	134	◆494788	Kit-Needle/Seat (Used Before Code Date 92072000).
42	494553	Keeper-Valve (Exhaust)	78	690364	Screw (Flywheel Guard)	137	◆281165	Gasket-Float Bowl
43	691980	Slinger-Governor/Oil	81	691729	Lock-Muffler Screw	141	495097	Kit-Choke Shaft (Manual Choke)
45	691793	Tappet-Valve	93	690602	Bushing-Throttle Shaft	141A	495931	Kit-Choke Shaft (Choke A Matic)
46	691167	Camshaft	94	494383	Kit-Idle Mixture	142	◆494877	Nozzle-Carburetor (Standard)
50	691711	Manifold-Intake	95	◆691636	Screw (Throttle Valve)	143	◆495608	Nozzle-Carburetor (High Altitude)
51	◆692284	Gasket-Intake (Intake Manifold to Carburetor)	98	495800	Kit-Idle Speed (Used After Code Date 92071900).	144	697843	Pulley/Spring Assembly
51A	∅★272554	Gasket-Intake (Intake Manifold to Cylinder)			<b>Note</b> _____	146	690979	Key-Timing
53	690227	Stud (Carburetor)			<b>398185</b> Kit-Idle Speed (Used Before Code Date 92072000).	147	◆497472	Jet-Pilot
54	93208	Screw (Intake Manifold)	104	◆690525	Pin-Float Hinge	167	692297	Seal-Air Cleaner Nut
55	693904	Housing-Rewind Starter (Used After Code Date 98111500).	105	◆231855	Valve-Float Needle	176	★691917	Seal-O Ring (Air Cleaner Base)
55A	393576	Housing-Rewind Starter (Used Before Code Date 98111600).	106	◆690577	Seat-Inlet (Used After Code Date 92071900).	179	692331	Screw (Fuel Tank Strap)
56	295871	Pulley-Starter			<b>Note</b> _____	182	691214	Bracket-Fuel Tank (Right Hand)
57	490179	Spring-Rewind Starter			<b>691901</b> Seat-Inlet (Used Before Code Date 92072000).	182A	692867	Bracket-Fuel Tank (Left Hand)
58	693389	Rope-Starter (63" Long)	108	690464	Valve-Choke (Manual Choke)	183	698459	Strap-Fuel Tank (Right Hand)
58A	695002	Rope-Starter (99" Long)	108A	692344	Valve-Choke (Choke A Matic)	183A	692030	Strap-Fuel Tank (Left Hand)
			111	691679	Pin-Retainer	186	692317	Connector-Hose
			121	497535	Kit-Carburetor Overhaul	187	296004	Line-Fuel (Cut to Required Length)
						188	691693	Screw (Control Bracket)
						190	690708	Screw (Fuel Tank)
						203	691381	Crank-Bell
						205	691693	Screw (Bell Crank)

★ Engine Gasket Set - Reference 358  
● Carburetor Overhaul Kit - Reference 121

◆ Carburetor Gasket Set - Reference 977  
∅ Valve Gasket Set - Reference 1095



REF. NO.	PART NO.	DESCRIPTION	REF. NO.	PART NO.	DESCRIPTION	REF. NO.	PART NO.	DESCRIPTION
209	690480	Spring-Governor (Red) <b>Note</b> 691795 Spring-Governor (Yellow) Used on Type No(s). 0119, 0131, 0157, 0174, 0188, 4009. 691278 Spring-Governor (Platinum) Used on Type No(s). 4016, 4019. 261194 Spring-Governor Used on Type No(s). 0195.	303	94089	Elbow-Exhaust	383	89838	Wrench-Spark Plug
			304	496439	Housing-Blower (Electric Starter)	403	690288	Washer (End Cap)
			305	692198	Screw (Blower Housing)	404	691691	Washer (Governor Crank)
			306	496797	Shield-Cylinder	441	690593	Bracket-Oil Fill
			306A	224898	Shield-Cylinder	445	691667	Filter-Air Cleaner Cartridge
			307	691003	Screw (Cylinder Shield)	449	690664	Screw (Oil Fill Bracket)
			308	691201	Cover-Cylinder Head	450	691261	Washer (Fuel Tank Bracket) (Rewind Start) <b>Note</b> 690259 Washer (Fuel Tank Bracket) (Electric Start)
			309	693054	Motor-Starter			
			309A		Motor-Starter (For Replacement Starter Motor, See Ref. 309)			
			310	690323	Bolt (Starter Motor)	455	691173	Cup-Flywheel
			311	497608	Brush Set	456	692299	Plate-Pawl Friction
216	690573	Link-Choke	311A	395538	Brush Set	459	281505	Pawl-Ratchet
216A	692893	Link-Choke	318	691617	Screw (Mounting Bracket) (Debris Screen Guard)	464	691898	Seal-O Ring (Fuel Shut-Off Valve)
216B	691281	Link-Choke				467	691668	Knob-Air Cleaner
222	694042	Bracket-Control	324	695160	Screen/Cup Assembly	474	696459	Alternator (Dual Circuit)
222A	692002	Bracket-Control	332	690662	Nut (Flywheel)	474A	696578	Alternator (DC Only)
227	691374	Lever-Governor Control	332A	693899	Nut (Flywheel)	474B	696458	Alternator (10 To 16 Amp Regulated)
231	691636	Screw (Choke Valve)	333	398811	Armature-Magneto	474C	696457	Alternator (Tri Circuit)
240	298090	Filter-Fuel <b>Note</b> 394358 Filter-Fuel Used on Type No(s). 0198	334	691061	Screw (Magneto Armature)	480	690664	Screw (Tube Clamp)
261	690278	Screw (Control Slide)	337	802592	Plug-Spark	493	691177	Bracket-Mounting
265	691024	Clamp-Casing	346	690661	Screw (Spark Arrester)	493A	692825	Bracket-Mounting (Debris Screen Guard)
267	690804	Screw (Casing Clamp)	355	691075	Washer (Muffler Bracket)	501	691188	Regulator (5 to 9 Amp)
268	691025	Casing-Control Wire (Cut to Required Length)	356A	398808	Wire-Stop	501A	691185	Regulator (10 to 16 Amp)
269	691026	Wire-Control (Cut to Required Length)	356B	690799	Wire-Stop	503	691532	Strap-Starter
270	691027	Nut (Control Wire Casing)	357	691483	Key-Drive Pulley	505	691251	Nut (Governor Control Lever)
271	691028	Lever-Control	358	299577	Gasket Set-Engine	507	691972	Insulator
276	692255	Washer-Sealing	359	691077	Washer (Ground Terminal)	510	696541	Drive-Starter
298	690453	Locknut-Muffler/Elbow	360	691105	Nut (Fuel Tank Bracket)	510A	696540	Drive-Starter
300	393010	Muffler (Round Lo Tone)	363	19165	Flywheel Puller	513	692024	Clutch-Drive
300A	691971	Muffler (Lo Tone)	373	691612	Nut (Ground Terminal)	520	691084	Terminal-Ground
300B	692304	Muffler (Lo Tone)				523	691387	Dipstick
300C	494222	Muffler (Super Lo Tone)				524	281370	Seal-Dipstick Tube
						525	692963	Tube-Dipstick

★ Engine Gasket Set - Reference 358  
● Carburetor Overhaul Kit - Reference 121

◆ Carburetor Gasket Set - Reference 977  
∅ Valve Gasket Set - Reference 1095

# 196700

REF. NO.	PART NO.	DESCRIPTION	REF. NO.	PART NO.	DESCRIPTION	REF. NO.	PART NO.	DESCRIPTION
526	690326	Screw (Regulator) (1 1/4" Long)	616	692012	Crank-Governor	741	691288	Gear-Timing
526A	690297	Screw (Regulator) (3/8" Long)	621	692310	Switch-Stop	757	691714	Link-Counterweight
527	690394	Clamp-Tube	632	693663	Spring/Link-Mechanical Governor	758	690619	Counterweight
535	272922	Filter-Air Cleaner Foam	634	●690801	Spring/Seal Assembly (Manual Choke)	759	691239	Pin-Counterweight
544	692034	Armature-Starter	634A	●690802	Spring/Seal Assembly (Choke A Matic)	761	690346	Screw (Counterweight)
544A	390837	Armature-Starter	635	66538	Boot-Spark Plug	783	695708	Gear-Pinion
552	491986	Bushing-Governor Crank	646	690465	Brace-Air Cleaner	797	693167	Nut (Brush Retainer)
559	690661	Screw (Remote Choke Stop)	655	691734	Anchor-Rewind Spring	801	691283	Cap-Drive
559B	693675	Screw (Remote Choke Stop)	667	690958	Nut (Air Cleaner Brace)	802	691286	Cap-End
562	691119	Bolt (Governor Control Lever)	674	691058	Screw (Fuel Tank Bracket) (3/4" Long)	802A	395537	Cap-End (Contains Brush Set)
563	690859	Screw (Debris Guard Screen)	676	393757	Deflector-Muffler (Side Out)	803	693757	Housing-Starter
578	692306	Wire Assembly (DC Only)	676A	395700	Deflector-Muffler (Direct Out)	803A	398159	Housing-Starter
579	691029	Nut (Starter Cable)	676B	393758	Deflector-Muffler (Louvered)	813	690635	Clamp
579A	691626	Nut (Starter Cable)	677	690661	Screw (Muffler Deflector)	819	690810	Screw (Muffler Bracket)
592	690800	Nut (Starter Rewind)	678	490817	Spacer-Rewind	832	691988	Guard-Muffler
597	691696	Screw (Pawl Friction Plate)	687	691949	Slide-Control	832A	690858	Guard-Muffler
601	95162	Clamp-Hose	688	690395	Cap-Friction	836	690367	Screw (Muffler Guard) (9/16" Long)
607	690703	Screw (Air Cleaner Brace) (7/16" Long)	689	690529	Spring-Friction	836A	695669	Screw (Muffler Guard) (7/16" Long)
607A	691693	Screw (Air Cleaner Brace) (3/8" Long)	689A	691855	Spring-Friction	836B	695669	Screw (Muffler Guard) (1/2" Long)
608	693900	Starter-Rewind (63" Long) (Used After Code Date 98111500).	691	692407	Seal-Governor Shaft	836C	690810	Screw (Muffler Guard) (5/8" Long)
608A	390391	Starter-Rewind (75" Long) (Used Before Code Date 98111600).	692	690572	Spring-Detent	842	★691870	Seal-O Ring (Dipstick Tube)
613	691632	Screw (Muffler)	697	691058	Screw (Drive Cap) (3/4" Long)	846	690371	Washer (Fuel Tank Strap)
613A	691351	Screw (Muffler)	697A	690372	Screw (Drive Cap) (11/16" Long)	847	392066	Dipstick/Tube Assembly
614	691620	Pin-Cotter	707	690279	Nut (Fuel Tank Strap)	851	493880	Terminal-Spark Plug
615	93307	Retainer-Governor Shaft	709	691268	Eccentric	868	692036	Seal-Valve
			718	690959	Pin-Locating	869	691703	Seat-Valve (Intake)
			725	690403	Shield-Heat	870	691703	Seat-Valve (Exhaust)
			725A	690433	Shield-Heat	871	261961	Bushing-Valve Guide (Exhaust)
			725B	690431	Shield-Heat			————— <b>Note</b> ————— 231218 Bushing- Valve Guide (Intake)
			726	696537	Gear-Ring (Includes Mounting Hardware)			
			727	395405	Cover-Starter Drive			
			729	690596	Clip-Wire			
			732	691097	Screw (Starter Drive Cover)			
			740	691105	Nut (Muffler Bracket)			

★ Engine Gasket Set – Reference 358  
● Carburetor Overhaul Kit – Reference 121

◆ Carburetor Gasket Set – Reference 977  
∅ Valve Gasket Set – Reference 1095

**196700**

REF. NO.	PART NO.	DESCRIPTION	REF. NO.	PART NO.	DESCRIPTION	REF. NO.	PART NO.	DESCRIPTION
875	693670	Base–Air Cleaner	949	397530	Guard–Debris Screen	1059	698516	Kit–Screw/Washer (Alternator)
875A	494745	Base–Air Cleaner	950	691657	Screw–Float Bowl	1083A	690958	Nut (End Cap) (Serrated)
876	696539	Kit–Pinion Spring	955	695659	Plug–Carburetor	1090	691293	Retainer–Brush
877	393456	Wire/Connector–Alternator (Dual Circuit)	957	493988	Cap–Fuel Tank	1095	498536	Gasket Set–Valve
877A	393814	Wire/Connector–Alternator (DC Only)	958	698182	Valve–Fuel Shut Off	1119	691183	Screw (Alternator)
877B	399916	Wire/Connector–Alternator (10 To 16 Amp)	958A	698183	Valve–Fuel Shut Off	1210	498144	Pulley/Spring Assembly (Pulley) (Used After Code Date 00082000 and Before Code Date 01051100).
877C	393537	Wire/Connector–Alternator (Tri Circuit) (5 To 9 Amp)	967	272477	Filter–Pre Cleaner	1211	498144	Pulley/Spring Assembly (Spring) (Used After Code Date 00082000 and Before Code Date 01051100).
878	691237	Harness–Alternator (Dual Circuit)	968	691324	Cover–Air Cleaner			
878A	691955	Harness–Alternator (Tri Circuit)	968A	281108	Cover–Air Cleaner			
883	692237	Gasket–Exhaust	971	691108	Screw (Air Cleaner Base to Carburetor)			
896	691641	Pin–Drive Retainer	972	691993	Tank–Fuel (4 Quart)			
920	691656	Solenoid–Starter	972A	390225	Tank–Fuel (3 Quart)			
930	691904	Guard–Rewind	975	495933	Bowl–Float			
			977	690192	Gasket Set–Carburetor			
			987	691326	Seal–Throttle Shaft			
			987A	692001	Seal–Throttle Shaft			
			994	399541	Arrestor–Spark			
			1012	690585	Retainer–Link			
			1019	491185	Kit–Label			
			1051	691265	Ring–Retaining			
			1054	280275	Tie–Cable			
			1058	272697	Owner’s Manual			

★ Engine Gasket Set – Reference 358  
 ● Carburetor Overhaul Kit – Reference 121

◆ Carburetor Gasket Set – Reference 977  
 ∅ Valve Gasket Set – Reference 1095