

## 313700 to 313799

# Illustrated Parts List

## Model Series

### 313700 to 313799

TYPE NUMBERS  
0112, 0132, 0133,  
0134.

#### TO FIND THE CORRECT NUMBER OF THE PART YOU NEED: FOLLOW THE INSTRUCTIONS BELOW

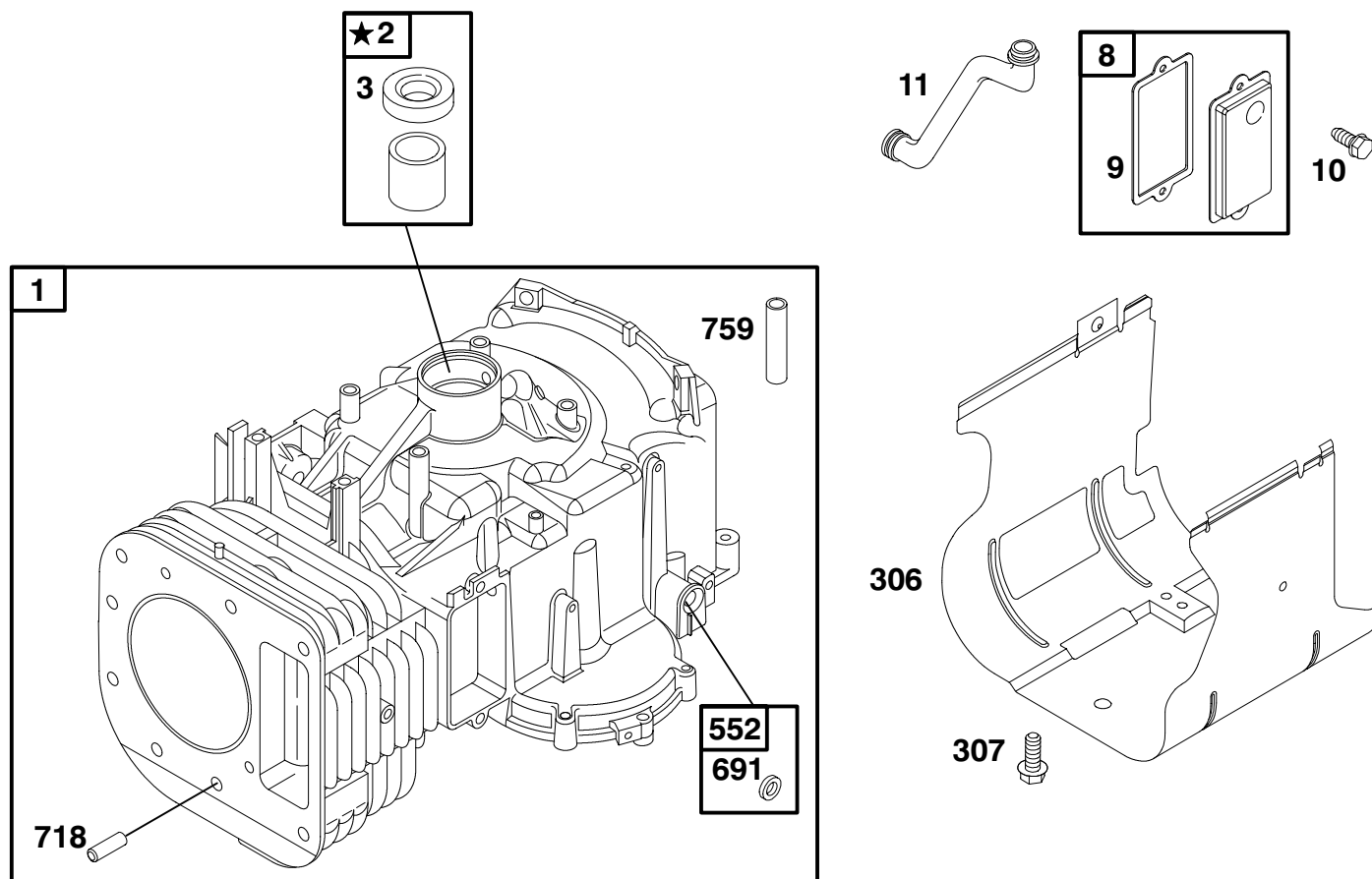
- A. Refer to Engine Model, Type and Code Number that is stamped on the blower housing of engine. Engine type numbers such as 0123 01 are listed only as 0123 in most instances. The two digits (01 or 02, etc.) to the right of the space may be required for more accurate parts identification in some instances. Select the Illustrated Parts List covering the correct Model Series and Type Number.
- B. Refer to the Illustrations and compare the original part with Illustration. The number next to the illustration is the Reference Number. Assemblies include all parts shown in frames. All parts shown in assembly frames having individual reference numbers can be purchased separately.
- C. After the Reference Number has been identified, refer to the Numerical text, where Reference and Primary Part Number are listed. THE PRIMARY PART IS USED ON ALL TYPE NUMBERS EXCEPT THOSE TYPE NUMBERS UNDER "NOTE."
- D. If a "Note" appears below the Primary Part Number, it means that this part differs from the Primary Part for certain types. If your Type number is listed under "Note," order the part referred to at the "Note."
- E. If your Engine Type Number does not appear after any part number listed under "Note," use the Primary Part Number.
- F. For Engine Type Numbers not covered by this book, check other Parts Lists having the same engine model or contact your source of supply.

PRINTED IN U.S.A.



COPYRIGHT by BRIGGS & STRATTON CORPORATION  
All rights reserved. No part of this material may be reproduced or transmitted, in any form or by any means, electronic or mechanical, including photocopying, recording or by any information storage and retrieval system, without permission in writing from Briggs & Stratton Corporation.

# 313700 to 313799



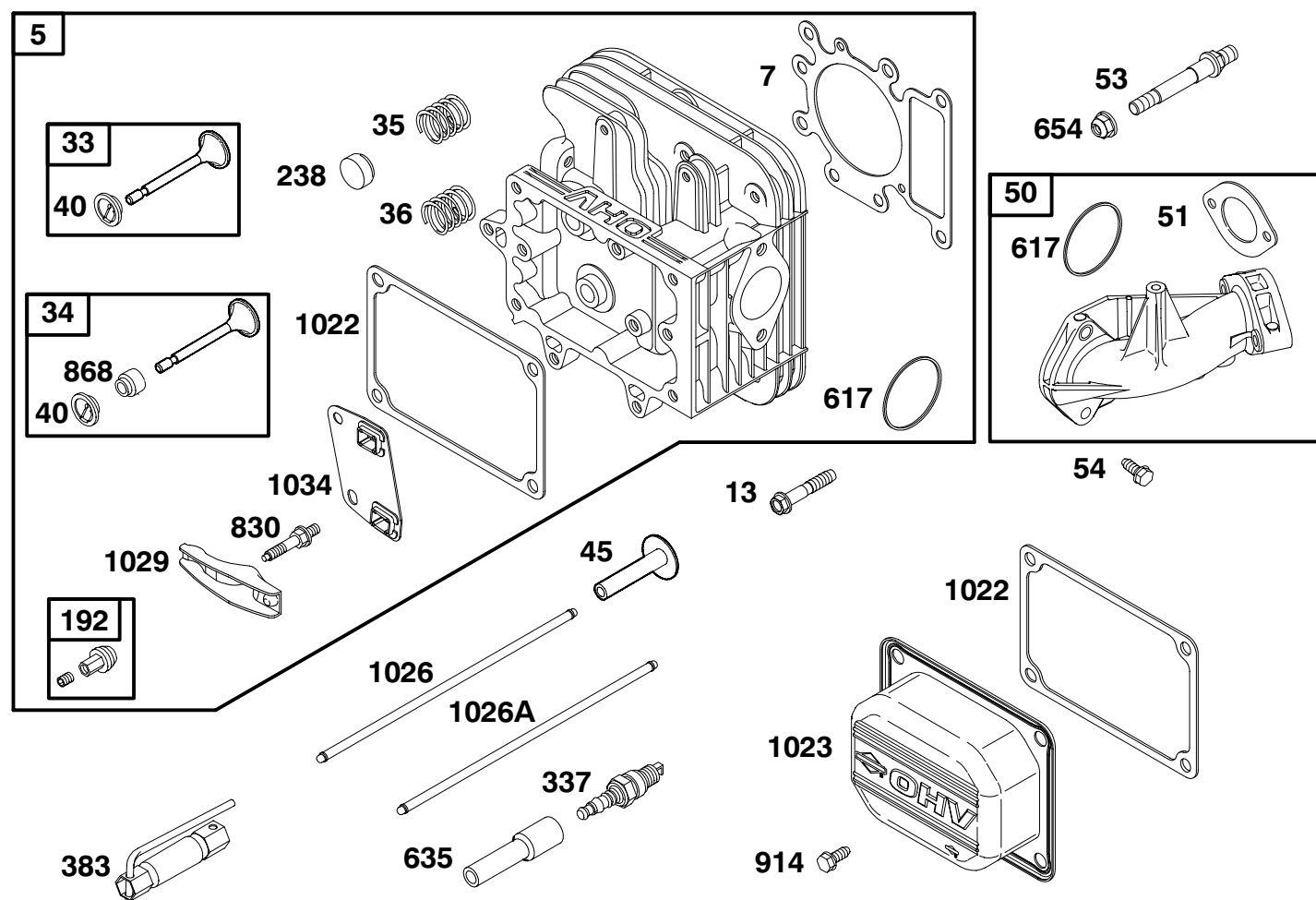
★ **REQUIRES SPECIAL TOOLS  
TO INSTALL. SEE REPAIR  
INSTRUCTION MANUAL.**

**1058 OWNER'S MANUAL**

REF. NO.	PART NO.	DESCRIPTION	REF. NO.	PART NO.	DESCRIPTION	REF. NO.	PART NO.	DESCRIPTION
1	690156	Cylinder Assembly	10	691666	Screw (Breather Assembly)	691	★491323	Governor Shaft Seal
2	399265	Bushing/Seal Kit (Magneto Side)	11	691328	Breather Tube	718	230192	Locating Pin
3	★391086	Oil Seal (Magneto Side)	306	690499	Cylinder Shield	759	691239	Counterweight Pin
8	495735	Breather Assembly	307	94930	Screw (Cylinder Shield)	1058	274271	Owner's Manual (Emission Engines)
9	★27803	Breather Gasket	552	491986	Governor Crank Bushing			

★ Included in Engine Overhaul Gasket Set - Ref. No. 358  
Included in Valve Overhaul Kit - Ref. No. 1033

● Included in Carburetor Overhaul Kit - Ref. No.121  
◆ Included in Carburetor Gasket Set - Ref. No.977  
■ Included in All Kits ★ ●◆

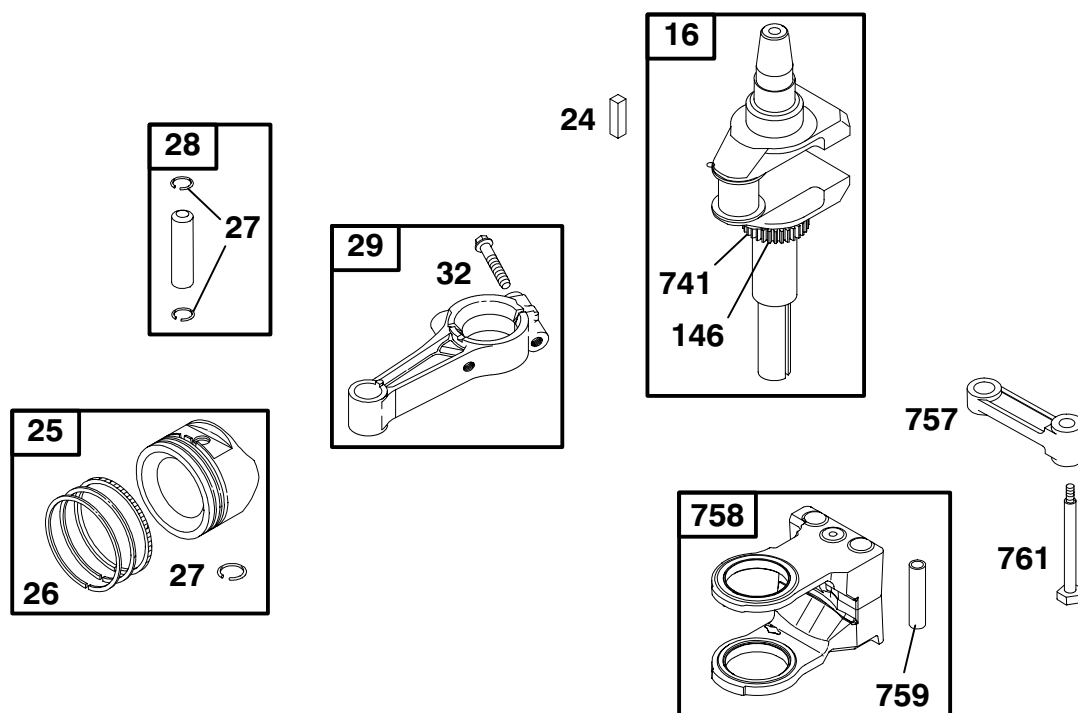


REF. NO.	PART NO.	DESCRIPTION	REF. NO.	PART NO.	DESCRIPTION	REF. NO.	PART NO.	DESCRIPTION
5	690188	Cylinder Head	53	690227	Stud (Carburetor)	868	★690968	Valve Seal
7	★692410	Cylinder Head Gasket	54	691148	Screw (Intake Manifold)	914	690960	Screw (Rocker Arm Cover)
13	690360	Screw (Cylinder Head)	192	492160	Rocker Arm Adjuster	1022	★272475	Rocker Cover Gasket
33	495856	Exhaust Valve	238	262836	Valve Cap	1023	691192	Rocker Arm Cover
34	495857	Intake Valve	337	491055	Sparkplug	1026	494432	Push Rod (Intake)
35	691279	Valve Spring (Intake)	383	89838	Sparkplug Wrench	1026A	495136	Push Rod (Exhaust)
36	691279	Valve Spring (Exhaust)	617	★692138	O-Ring Seal (Intake Manifold)	1029	224554	Rocker Arm
40	224641	Valve Retainer	635	280872	Sparkplug Boot	1034	690822	Push Rod Guide
45	690564	Valve Tappet	654	94010	Nut (Carburetor)			
50	690193	Intake Manifold	830	691095	Stud (Rocker Arm)			
51	■273650	Intake Gasket						

★ Included in Engine Overhaul Gasket Set - Ref. No. 358  
 Included in Valve Overhaul Kit - Ref. No. 1033

● Included in Carburetor Overhaul Kit - Ref. No.121  
 ◆ Included in Carburetor Gasket Set - Ref. No.977  
 ■ Included in All Kits ★ ●◆

# 313700 to 313799



REF. NO.	PART NO.	DESCRIPTION	REF. NO.	PART NO.	DESCRIPTION	REF. NO.	PART NO.	DESCRIPTION
16	690136	Crankshaft	26	690162	Ring Set (Standard)	29	692419	Connecting Rod (Standard)
24	222698	Flywheel Key			----- <b>Note</b> -----			----- <b>Note</b> -----
25	692271	Piston Assembly (Standard)			690164 Ring Set (.010 O.S.)			499940 Connecting Rod (.020 Undersize)
		----- <b>Note</b> -----			690166 Ring Set (.020 O.S.)	32	692852	Screw (Connecting Rod)
		692272 Piston Assembly (.010 O.S.)			690168 Ring Set (.030 O.S.)	146	94196	Timing Key
		692273 Piston Assembly (.020 O.S.)	27	691299	Piston Pin Lock	741	691284	Timing Gear
		692274 Piston Assembly (.030 O.S.)	28	498319	Piston Pin (Standard)	757	213998	Counterweight Link
					----- <b>Note</b> -----	758	692423	Counterweight
					498320 Piston Pin (.005 O.S.)	759	691239	Counterweight Pin
						761	691096	Screw (Counterweight)

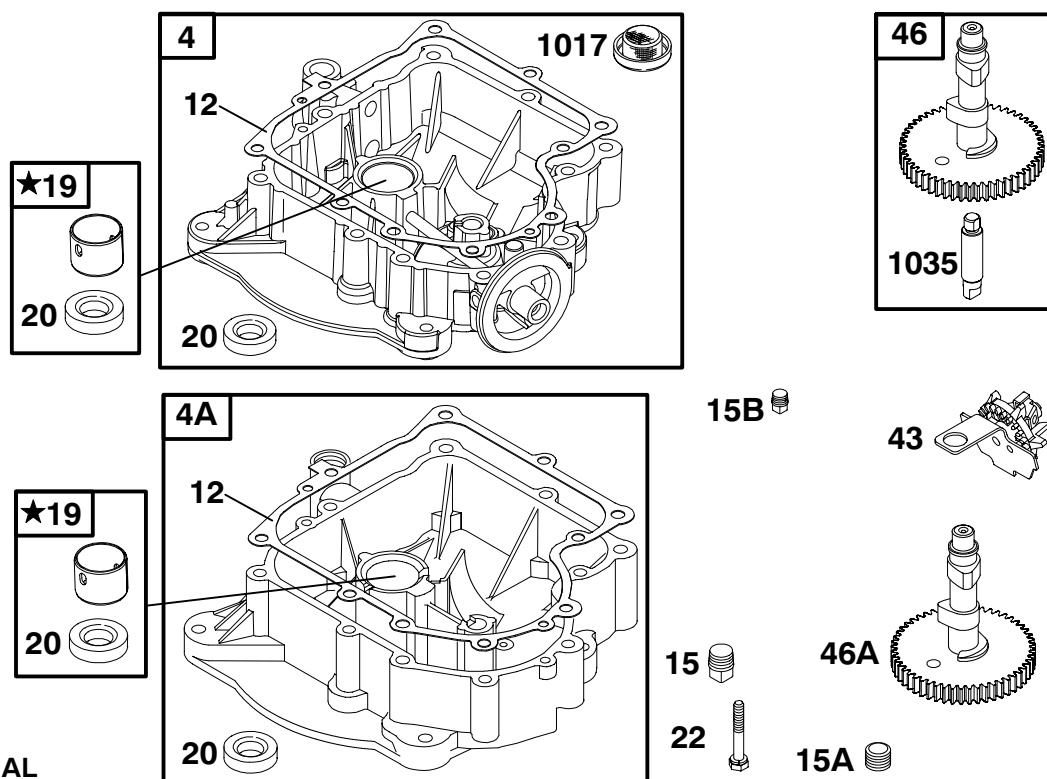
★ Included in Engine Overhaul Gasket Set - Ref. No. 358  
Included in Valve Overhaul Kit - Ref. No. 1033

● Included in Carburetor Overhaul Kit - Ref. No.121  
◆ Included in Carburetor Gasket Set - Ref. No.977  
■ Included in All Kits ★ ●◆

6194-4

Assemblies include all parts shown in frames.

1Q-3/2000

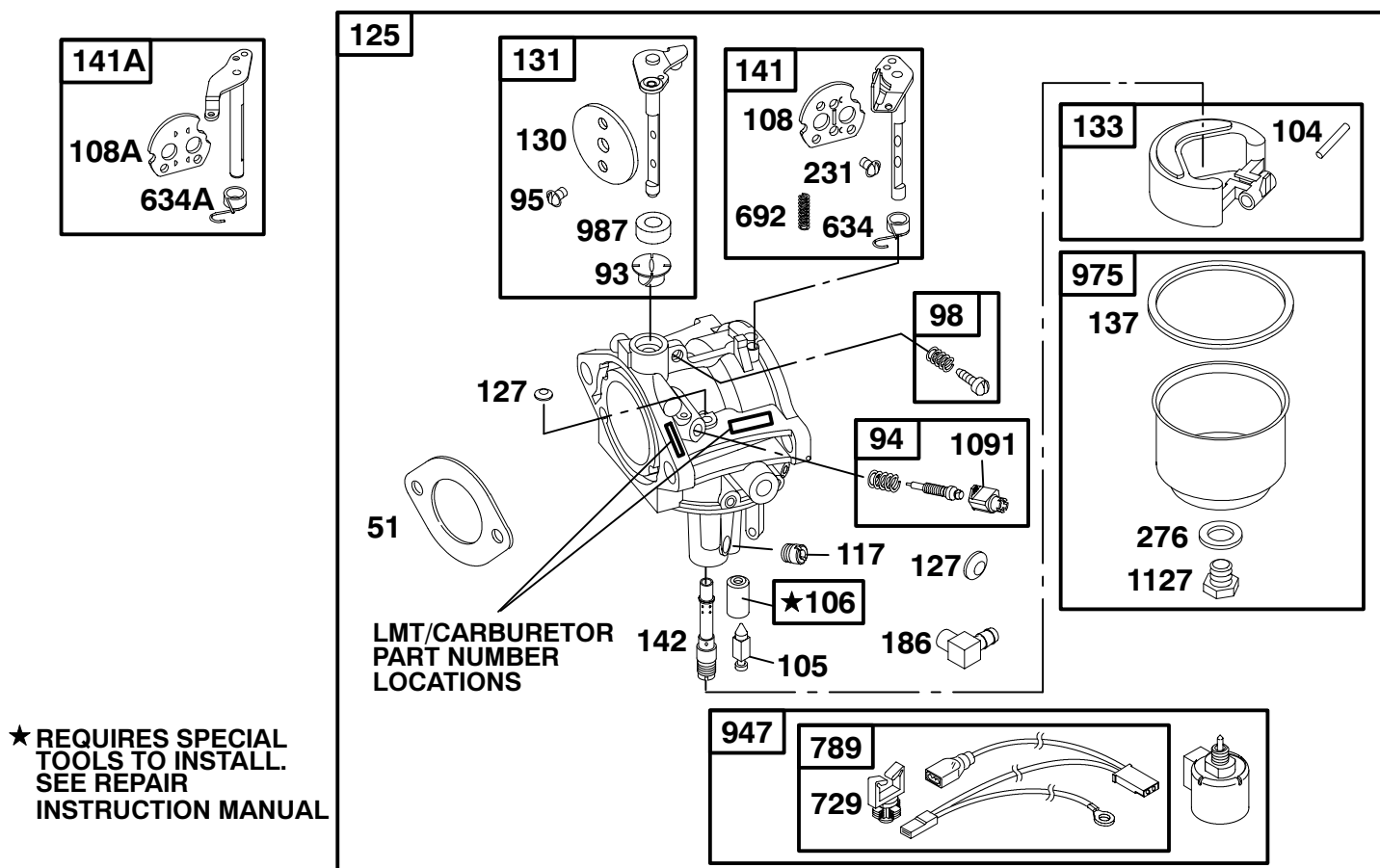


REF. NO.	PART NO.	DESCRIPTION	REF. NO.	PART NO.	DESCRIPTION	REF. NO.	PART NO.	DESCRIPTION
4	693582	Engine Sump Used on Type No(s). 0112, 0134.	15	94239	Oil Drain Plug	43	490815	Governor/Oil Slinger
4A	494238	Engine Sump Used on Type No(s). 0132, 0133.	15A	94880	Oil Drain Plug	46	693450	Camshaft Used on Type No(s). 0112, 0134.
12	★271916	Crankcase Gasket (.015 Thick) ----- <b>Note</b> ----- ★271997 Crankcase Gasket (.005 Thick) ★271996 Crankcase Gasket (.009 Thick)	15B	690283	Oil Drain Plug	46A	692421	Camshaft Used on Type No(s). 0132, 0133.
			19	490666	Bushing/Seal Kit (PTO Side)	1017	690770	Oil Pump Screen
			20	★291675	Oil Seal (PTO Side)	1035	693784	Pump Shaft
			22	692125	Screw (Crankcase Cover/ Sump)			

★ Included in Engine Overhaul Gasket Set - Ref. No. 358  
Included in Valve Overhaul Kit - Ref. No. 1033

● Included in Carburetor Overhaul Kit - Ref. No.121  
◆ Included in Carburetor Gasket Set - Ref. No.977  
■ Included in All Kits ★ ◆◆

# 313700 to 313799

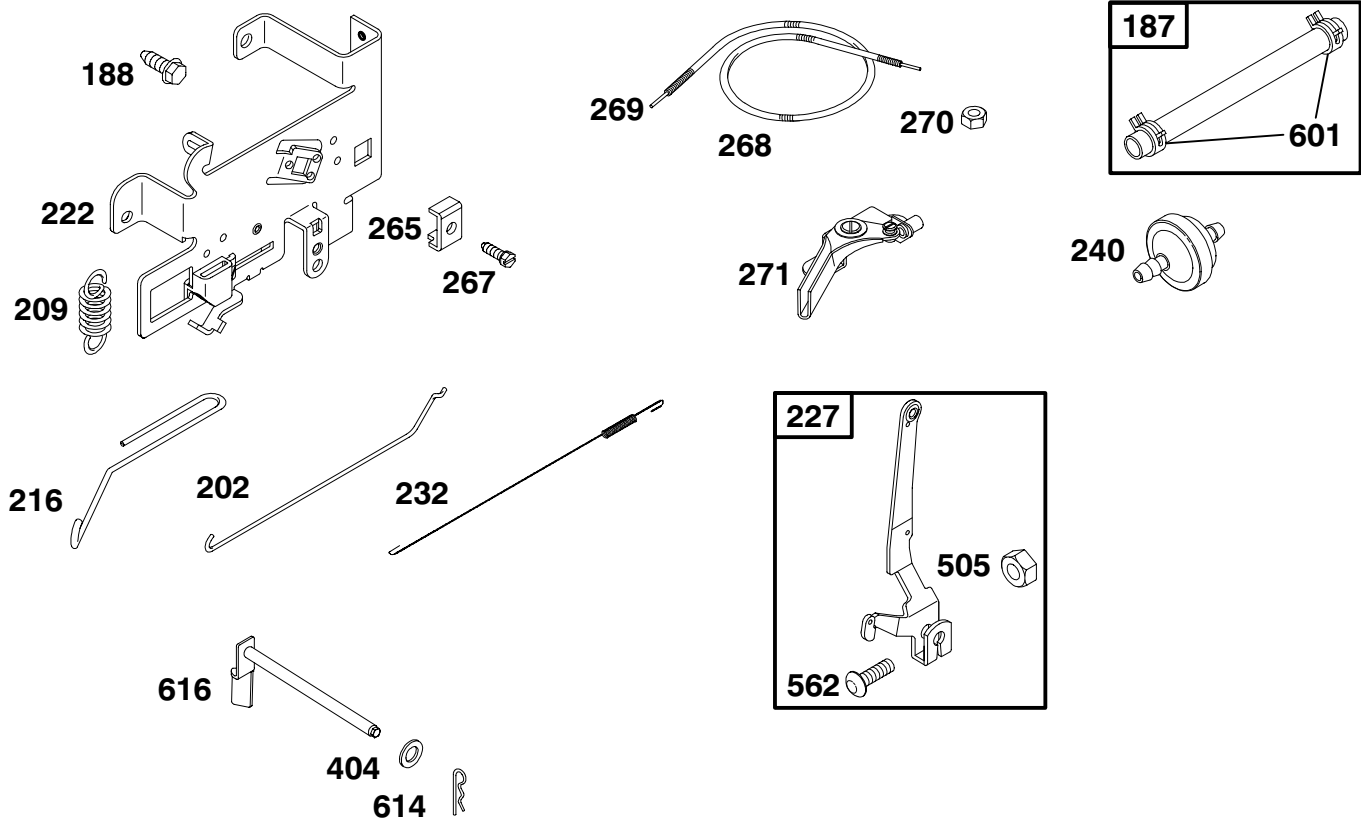


## THIS CARBURETOR SERVICES BOTH CHOKE-A-MATIC AND MANUAL CHOKE SYSTEMS

REF. NO.	PART NO.	DESCRIPTION	REF. NO.	PART NO.	DESCRIPTION	REF. NO.	PART NO.	DESCRIPTION
51	■273650	Intake Gasket	125	690194	Carburetor (LMT 155)	634	●690801	Spring/Seal Assembly (LMT 155) (Manual Choke)
93	690602	Throttle Shaft Bushing	127	●695005	Welch Plug	634A	●690802	Spring/Seal Assembly (LMT 154) (Choke A Matic)
94	498030	Idle Mixture Kit	130	224539	Throttle Valve			
95	●94098	Screw (Throttle Valve)	131	494379	Throttle Shaft Kit			
98	495800	Idle Speed Kit	133	494381	Carburetor Float			
104	●690525	Float Hinge Pin	137	◆281165	Float Bowl Gasket			
105	●231855	Float Needle Valve	141	495097	Choke Shaft Kit (LMT 155) (Manual Choke)	692	690572	Detent Spring
106	●231854	Inlet Seat				729	691335	Wire Clip
108	690464	Choke Valve (LMT155) (Manual Choke)	141A	495931	Choke Shaft Kit (LMT 154) (Choke A Matic)	789	497708	Wiring Harness
108A	692344	Choke Valve (LMT154) (Choke A Matic)	142	●692412	Carburetor Nozzle	947	692734	Fuel Solenoid
117	●692408	Main Jet (Standard)	186	493496	Hose Connector	975	495933	Float Bowl
	----- Note -----		231	●94098	Screw (Choke Valve)	987	●691326	Throttle Shaft Seal
	692411	Main Jet (High Altitude)	276	◆281164	Sealing Washer	1091	691333	Limiter Cap
						1127	94642	Screw (Float Bowl)

★ Included in Engine Overhaul Gasket Set - Ref. No. 358  
Included in Valve Overhaul Kit - Ref. No. 1033

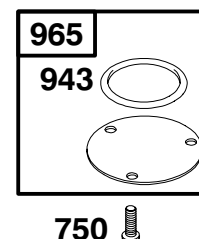
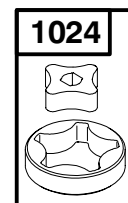
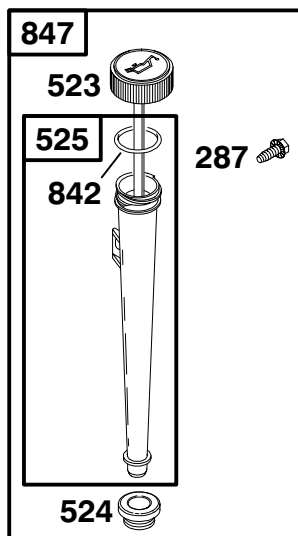
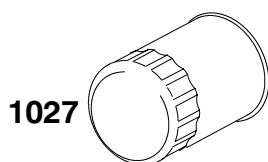
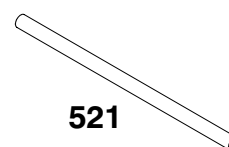
● Included in Carburetor Overhaul Kit - Ref. No.121  
◆ Included in Carburetor Gasket Set - Ref. No.977  
■ Included in All Kits ★ ●◆



REF. NO.	PART NO.	DESCRIPTION	REF. NO.	PART NO.	DESCRIPTION	REF. NO.	PART NO.	DESCRIPTION
187	298049	Fuel Line (Cut to Required Length)	240	298090	Fuel Filter	404	94927	Washer (Governor Crank)
188	94929	Screw (Control Bracket)	265	221535	Casing Clamp	505	691251	Nut (Governor Control Lever)
202	262767	Mechanical Governor Link	267	94906	Screw (Casing Clamp)	562	691119	Bolt (Governor Control Lever)
209	260695	Governor Spring	268	65616	Control Wire Casing (Cut to Required Length)	601	95162	Hose Clamp
216	262766	Choke Link	269	26633	Control Wire (Cut to Required Length)	614	93306	Cotter Pin
222	694042	Control Bracket	270	63426	Nut (Control Wire Casing)	616	495157	Governor Crank
227	691374	Governor Control Lever	271	290568	Control Lever			
232	262785	Governor Link Spring						

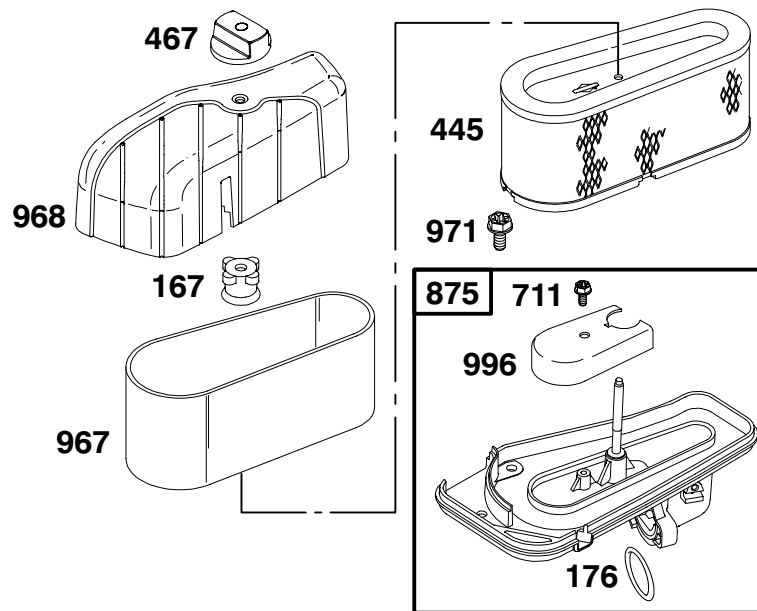
★ Included in Engine Overhaul Gasket Set - Ref. No. 358  
Included in Valve Overhaul Kit - Ref. No. 1033

● Included in Carburetor Overhaul Kit - Ref. No.121  
◆ Included in Carburetor Gasket Set - Ref. No.977  
■ Included in All Kits ★ ●◆



K&T Saw Shop 606-678-9623 or 606-561-4983



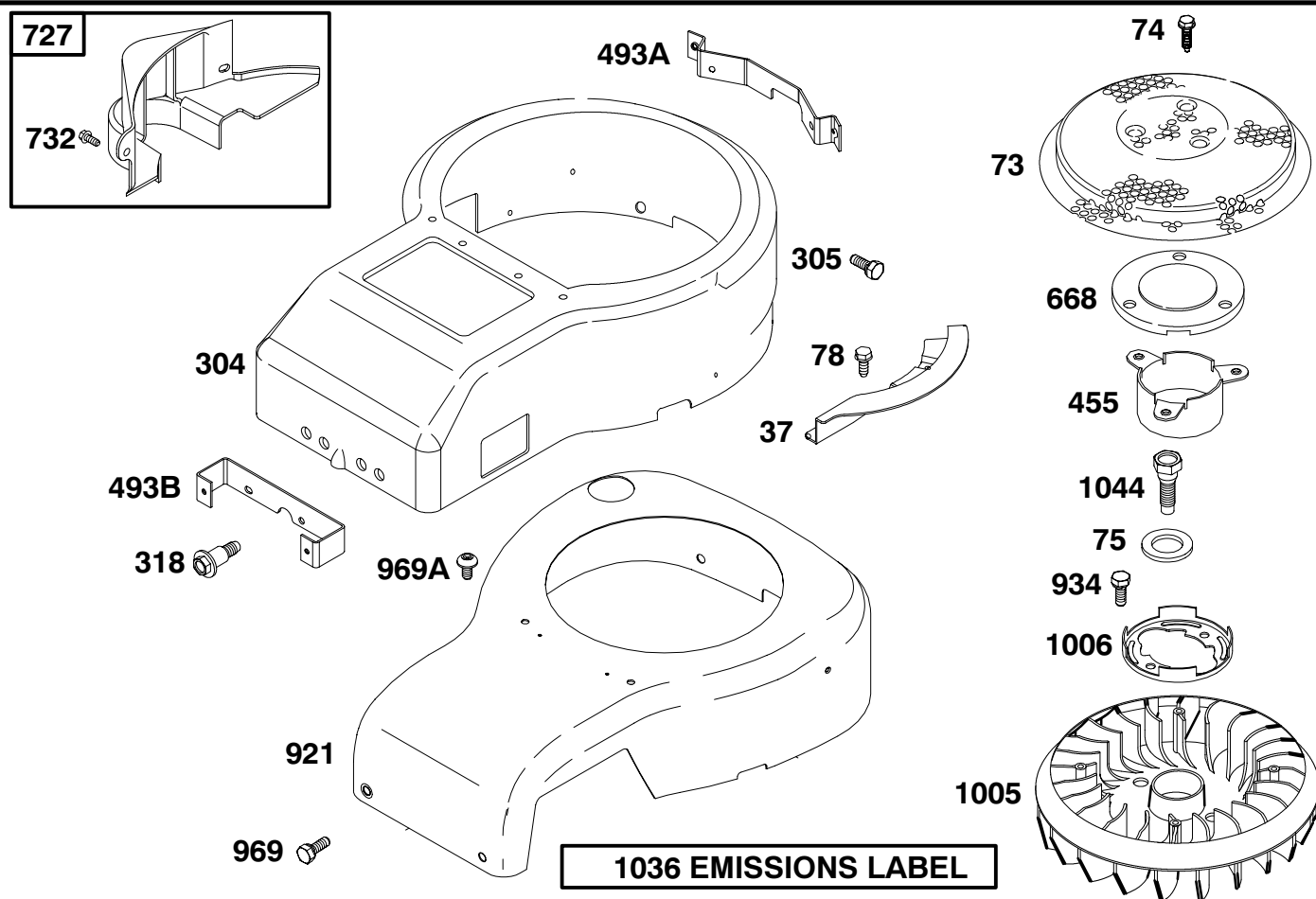


REF. NO.	PART NO.	DESCRIPTION	REF. NO.	PART NO.	DESCRIPTION	REF. NO.	PART NO.	DESCRIPTION
167	281051	Air Cleaner Stud Seal	467	493903	Air Cleaner Knob	968	692139	Air Cleaner Cover
176	★281106	O-Ring Seal (Air Cleaner Base)	711	690703	Screw (Carburetor Shield)	971	692129	Screw (Air Cleaner Base)
445	496894	Air Cleaner Cartridge Filter	875	693686	Air Cleaner Base	996	690678	Carburetor Shield
			967	272403	Pre-Cleaner Filter			

★ Included in Engine Overhaul Gasket Set - Ref. No. 358  
Included in Valve Overhaul Kit - Ref. No. 1033

● Included in Carburetor Overhaul Kit - Ref. No.121  
◆ Included in Carburetor Gasket Set - Ref. No.977  
■ Included in All Kits ★ ●◆

# 313700 to 313799



REF. NO.	PART NO.	DESCRIPTION	REF. NO.	PART NO.	DESCRIPTION	REF. NO.	PART NO.	DESCRIPTION
37	690456	Flywheel Guard	727	490324	Starter Drive Cover	1036	694997	Emissions Label (Used After Code Date 99093000).
73	690492	Rotating Screen	732	94903	Screw (Starter Drive Cover)	----- <b>Note</b> -----		
74	94626	Screw (Rotating Screen)	921	692417	Blower Housing Cover (Red)	694332 Emissions Label (Used Before Code Date 99100100 and After Code Date 98123100).		
75	225136	Washer (Flywheel)	----- <b>Note</b> -----			692468 Emissions Label (Used Before Code Date 99010100).		
78	94896	Screw (Flywheel Guard)	692679 Blower Housing Cover (Black)			1044	94673	Screw (Flywheel)
304	690497	Blower Housing (Black)	934	94627	Screw (Fan Retainer)			
305	690960	Screw (Blower Housing)	969	690960	Screw (Blower Housing Cover)			
318	692127	Screw (Mounting Bracket)	969A	690365	Screw (Blower Housing)			
455	691173	Flywheel Cup	1005	281400	Flywheel Fan			
493A	690494	Mounting Bracket	1006	690452	Fan Retainer			
493B	690493	Mounting Bracket						
668	691323	Spacer						

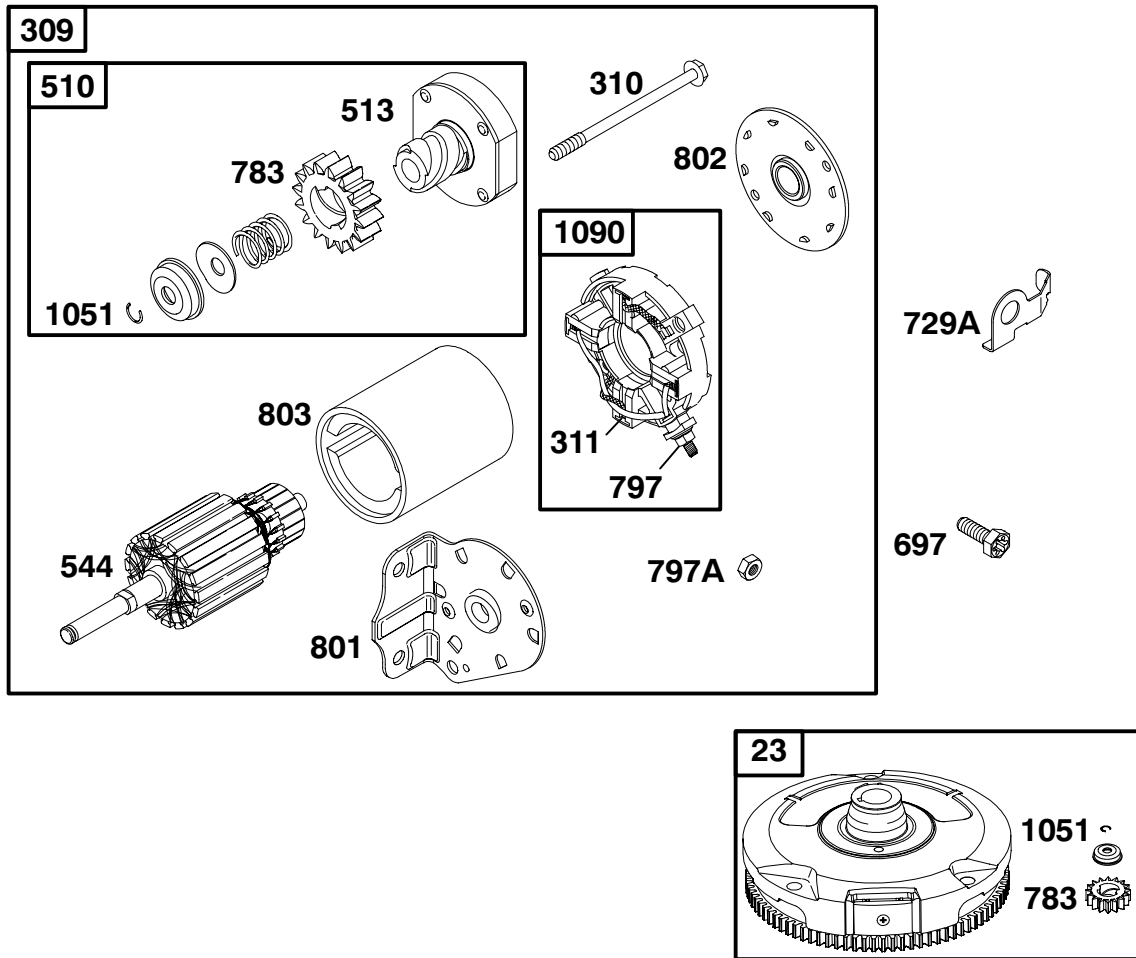
★ Included in Engine Overhaul Gasket Set - Ref. No. 358  
Included in Valve Overhaul Kit - Ref. No. 1033

● Included in Carburetor Overhaul Kit - Ref. No.121  
◆ Included in Carburetor Gasket Set - Ref. No.977  
■ Included in All Kits ★ ●◆

6194-10

Assemblies include all parts shown in frames.

1Q-3/2000



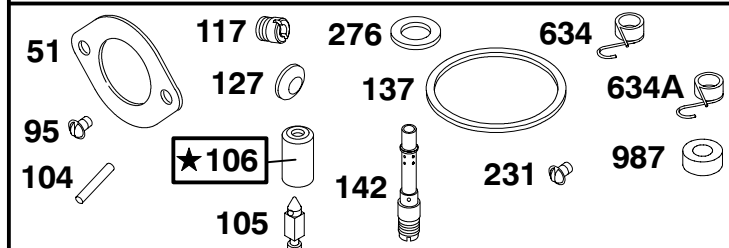
REF. NO.	PART NO.	DESCRIPTION	REF. NO.	PART NO.	DESCRIPTION	REF. NO.	PART NO.	DESCRIPTION
<b>23</b>	<b>693557</b>	Flywheel (Steel Ring Gear)	<b>513</b>	<b>398003</b>	Drive Clutch	<b>797A</b>	<b>92278</b>	Nut (Brush Retainer)
<b>309</b>	<b>693551</b>	Starter Motor (For Steel Ring Gear)	<b>544</b>	<b>497603</b>	Starter Armature	<b>801</b>	<b>691429</b>	Drive Cap
<b>310</b>	<b>690323</b>	Bolt (Starter Motor)	<b>697</b>	<b>690372</b>	Screw (Drive Cap)	<b>802</b>	<b>497607</b>	End Cap
<b>311</b>	<b>497608</b>	Brush Set	<b>729A</b>	<b>691224</b>	Wire Clip	<b>803</b>	<b>693757</b>	Starter Housing
<b>510</b>	<b>693699</b>	Starter Drive (Used With Steel Ring Gear)	<b>783</b>	<b>693713</b>	Pinion Gear (For Steel Ring Gear)	<b>1051</b>	<b>263080</b>	Retaining Ring
			<b>797</b>	<b>693167</b>	Nut (Brush Retainer)	<b>1090</b>	<b>497605</b>	Brush Retainer

★ Included in Engine Overhaul Gasket Set - Ref. No. 358  
 Included in Valve Overhaul Kit - Ref. No. 1033

● Included in Carburetor Overhaul Kit - Ref. No.121  
 ◆ Included in Carburetor Gasket Set - Ref. No.977  
 ■ Included in All Kits ★ ●◆

# 313700 to 313799

## 121 CARBURETOR OVERHAUL KIT

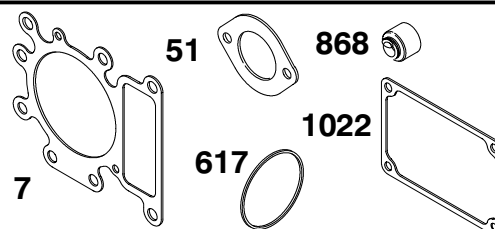


★ **REQUIRES SPECIAL TOOLS TO INSTALL. SEE REPAIR INSTRUCTION MANUAL.**

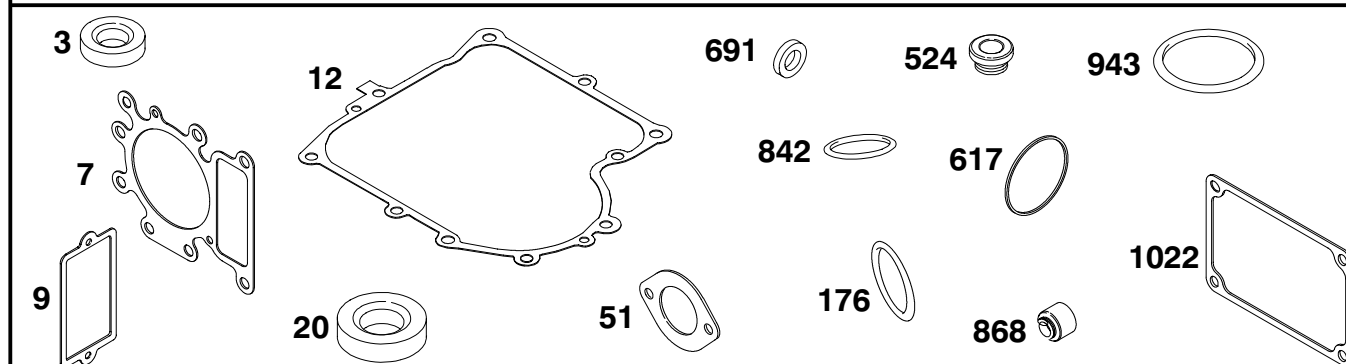
## 977 CARBURETOR GASKET SET



## 1033 VALVE OVERHAUL KIT



## 358 ENGINE OVERHAUL GASKET SET



REF. NO.	PART NO.	DESCRIPTION	REF. NO.	PART NO.	DESCRIPTION	REF. NO.	PART NO.	DESCRIPTION
3	★391086	Oil Seal (Magneto Side)	105	●231855	Float Needle Valve	634	●690801	Spring/Seal Assembly (LMT 155) (Manual Choke)
7	★692410	Cylinder Head Gasket	106	●231854	Inlet Seat	634A	●690802	Spring/Seal Assembly (LMT 154) (Choke A Matic)
9	★27803	Breather Gasket	117	●692408	Main Jet (Standard)	691	★491323	Governor Shaft Seal
12	★271916	Crankcase Gasket (.015 Thick)	121	690191	Carburetor Overhaul Kit	842	★270920	Dipstick/Tube Seal
	----- Note -----		127	●695005	Welch Plug	868	★690968	Valve Seal
	★271997	Crankcase Gasket (.005 Thick)	137	◆●281165	Float Bowl Gasket	943	★690589	O-Ring Seal (Oil Pump Cover)
	★271996	Crankcase Gasket (.009 Thick)	142	●692412	Carburetor Nozzle	977	690192	Carburetor Gasket Set
20	★291675	Oil Seal (PTO Side)	176	★281106	O-Ring Seal (Air Cleaner Base)	987	●691326	Throttle Shaft Seal
51	■273650	Intake Gasket	231	●94098	Screw (Choke Valve)	1022	★272475	Rocker Cover Gasket
95	●94098	Screw (Throttle Valve)	276	◆●281164	Sealing Washer	1033	690190	Valve Overhaul Kit
104	●690525	Float Hinge Pin	358	690189	Engine Overhaul Gasket Set			
			524	★281370	Dipstick Tube Seal			
			617	★692138	O-Ring Seal (Intake Manifold)			

★ Included in Engine Overhaul Gasket Set - Ref. No. 358  
Included in Valve Overhaul Kit - Ref. No. 1033

● Included in Carburetor Overhaul Kit - Ref. No. 121  
◆ Included in Carburetor Gasket Set - Ref. No. 977  
■ Included in All Kits ★ ◆