

198700 to 198799

Illustrated Parts List

Model Series

198700 to 198799

TYPE NUMBERS
0141.

TO FIND

THE CORRECT NUMBER OF THE PART YOU NEED:

FOLLOW THE INSTRUCTIONS BELOW

- A. Refer to Engine Model, Type and Code Number that is stamped on the blower housing of engine. Engine type numbers such as 0123 01 are listed only as 0123 in most instances. The two digits (01 or 02, etc.) to the right of the space may be required for more accurate parts identification in some instances. Select the Illustrated Parts List covering the correct Model Series and Type Number.
- B. Refer to the Illustrations and compare the original part with Illustration. The number next to the illustration is the Reference Number. Assemblies include all parts shown in frames. All parts shown in assembly frames having individual reference numbers can be purchased separately.
- C. After the Reference Number has been identified, refer to the Numerical text, where Reference and Primary Part Number are listed. **THE PRIMARY PART IS USED ON ALL TYPE NUMBERS EXCEPT THOSE TYPE NUMBERS UNDER "NOTE."**
- D. If a "Note" appears below the Primary Part Number, it means that this part differs from the Primary Part for certain types. If your Type number is listed under "Note," order the part referred to at the "Note."
- E. If your Engine Type Number does not appear after any part number listed under "Note," use the Primary Part Number.
- F. For Engine Type Numbers not covered by this book, check other Parts Lists having the same engine model or contact your source of supply.

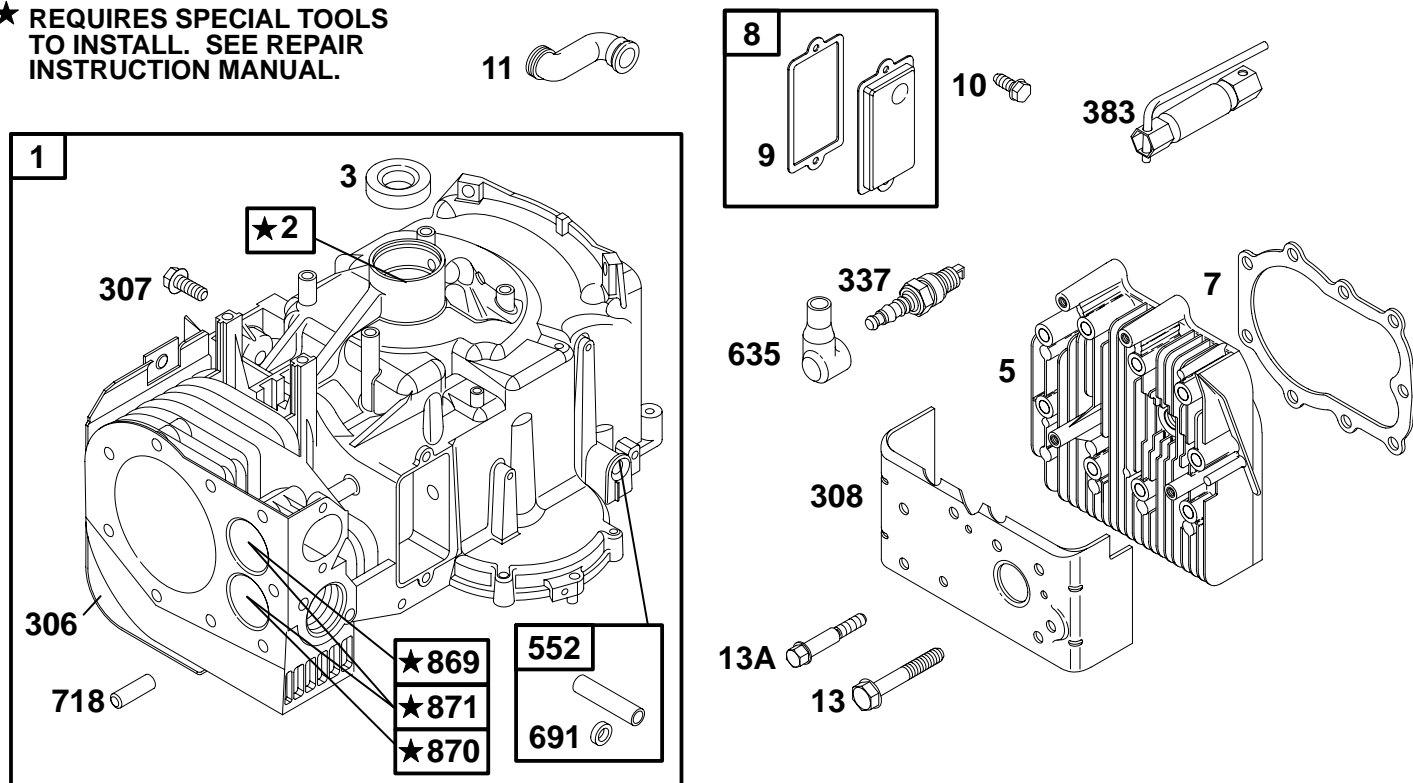
PRINTED IN U.S.A.



COPYRIGHT by BRIGGS & STRATTON CORPORATION
All rights reserved. No part of this material may be reproduced or transmitted, in any form or by any means, electronic or mechanical, including photocopying, recording or by any information storage and retrieval system, without permission in writing from Briggs & Stratton Corporation.

198700 to 198799

★ **REQUIRES SPECIAL TOOLS TO INSTALL. SEE REPAIR INSTRUCTION MANUAL.**

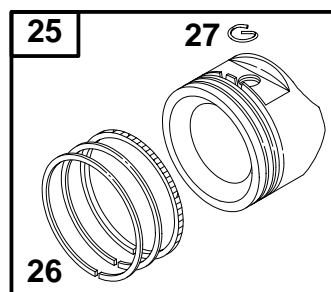
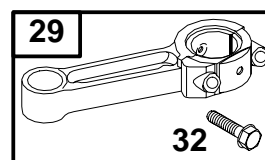
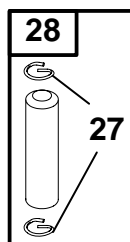


1058 OWNER'S MANUAL

REF. NO.	PART NO.	DESCRIPTION	REF. NO.	PART NO.	DESCRIPTION	REF. NO.	PART NO.	DESCRIPTION
1	495623	Cylinder Assembly	13	94622	Screw (Cylinder Head) (2 61/64" Long)	635	66538	Boot-Sparkplug
2	495657	Kit-Bushing/Seal (Magneto Side)	13A	94565	Screw (Cylinder Head) (2 19/32" Long)	691	491323	Seal-Governor Shaft
3	★391086	Seal-Oil (Magneto Side)	306	496797	Shield-Cylinder	718	230192	Pin-Locating
5	214015	Head-Cylinder	307	94930	Screw (Cylinder Shield)	869	211661	Seat-Valve (Intake)
7	Ø★272163	Gasket-Cylinder Head	308	691201	Cover-Cylinder Head	870	262924	Seat-Valve (Exhaust)
8	495735	Breather Assembly	337	802592	Sparkplug	871	261961	Bushing-Valve Guide (Exhaust Valve)
9	Ø★27803	Gasket-Breather	383	89838	Wrench-Sparkplug	Note		
10	691666	Screw (Breather Assembly)	552	491986	Bushing-Governor Crank	231218		Bushing-Valve Guide (Intake Valve)
11	280005	Tube-Breather				1058	274787	Owner's Manual

★ Included in Engine Gasket Set-Ref. No. 358.
● Included in Carburetor Overhaul Kit-Ref. No. 121.

◆ Included in Carburetor Gasket Set-Ref. No. 977.
Ø Included in Valve Gasket Set-Ref. No. 1095.

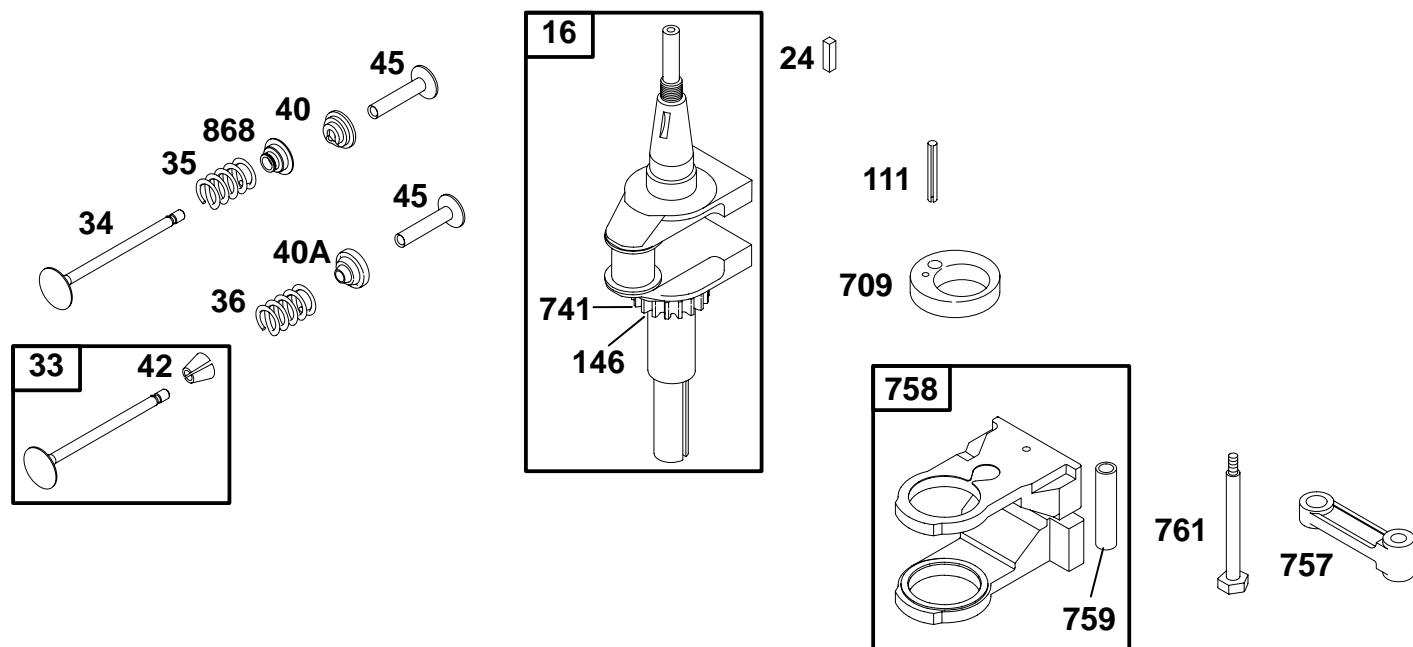


REF. NO.	PART NO.	DESCRIPTION	REF. NO.	PART NO.	DESCRIPTION	REF. NO.	PART NO.	DESCRIPTION
25	499907	Piston Assembly (Standard) ———— Note ——— 499908 Piston Assembly (.010" O.S.) 499909 Piston Assembly (.020" O.S.) 499910 Piston Assembly (.030" O.S.)	26	391669	Ring Set (Standard) ———— Note ——— 299743 Ring Set (Chrome, Standard) 690018 Ring Set (.010" O.S.) 690019 Ring Set (.020" O.S.) 690020 Ring Set (.030" O.S.)	27	263181	Lock-Piston Pin
						28	295840	Pin-Piston (Standard) ———— Note ——— 295841 Pin-Piston (.005" O.S.)
						29	390402	Rod-Connecting ———— Note ——— 390773 Rod-Connecting (.020" Undersize)
						32	690352	Screw (Connecting Rod)

★ Included in Engine Gasket Set-Ref. No. 358.
● Included in Carburetor Overhaul Kit-Ref. No. 121.

◆ Included in Carburetor Gasket Set-Ref. No. 977.
Ø Included in Valve Gasket Set-Ref. No. 1095.

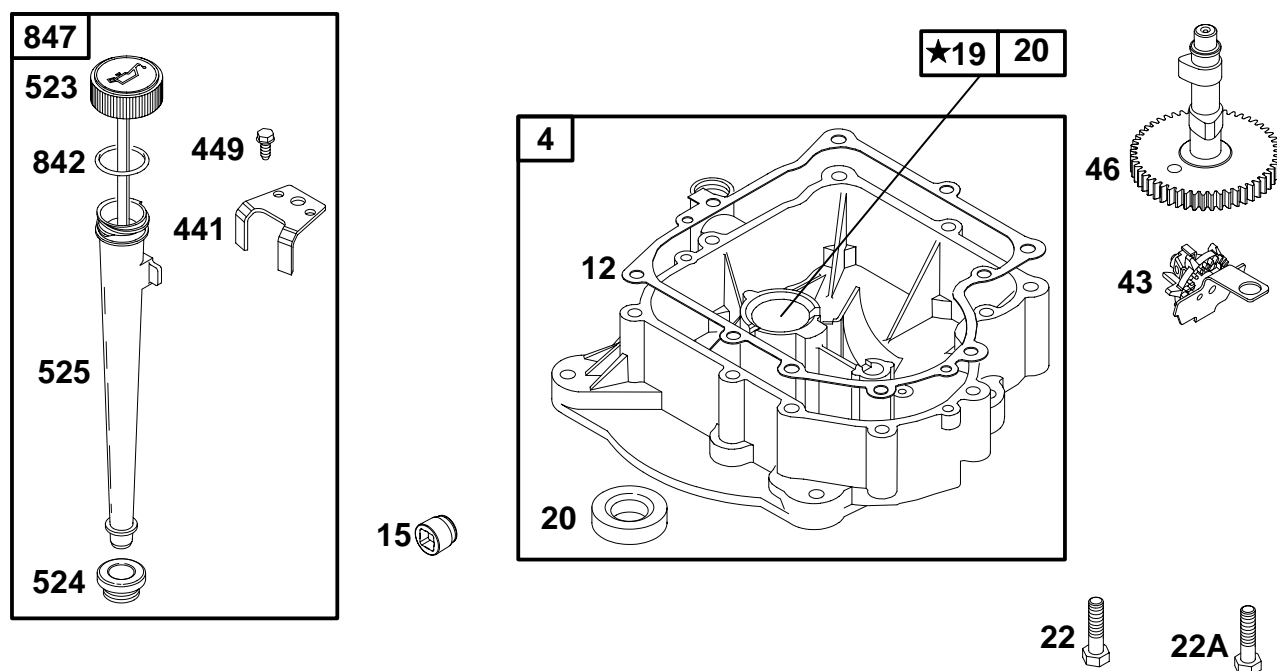
198700 to 198799



REF. NO.	PART NO.	DESCRIPTION	REF. NO.	PART NO.	DESCRIPTION	REF. NO.	PART NO.	DESCRIPTION
16	495629	Crankshaft	40	221596	Retainer-Valve (Intake)	709	691268	Eccentric
24	222698	Key-Flywheel	40A	292260	Retainer-Valve (Exhaust)	741	691288	Gear-Timing
33	390420	Valve-Exhaust	42	494553	Keeper-Valve	757	213998	Link-Counterweight
34	261055	Valve-Intake	45	260933	Tappet-Valve	758	690619	Counterweight
35	65906	Spring-Valve (Intake)	111	94853	Pin-Retainer	759	691239	Pin-Counterweight
36	26828	Spring-Valve (Exhaust)	146	94388	Key-Timing	761	690346	Screw (Counterweight)
						868	497656	Seal-Valve

★ Included in Engine Gasket Set-Ref. No. 358.
 ● Included in Carburetor Overhaul Kit-Ref. No. 121.

◆ Included in Carburetor Gasket Set-Ref. No. 977.
 Ø Included in Valve Gasket Set-Ref. No. 1095.

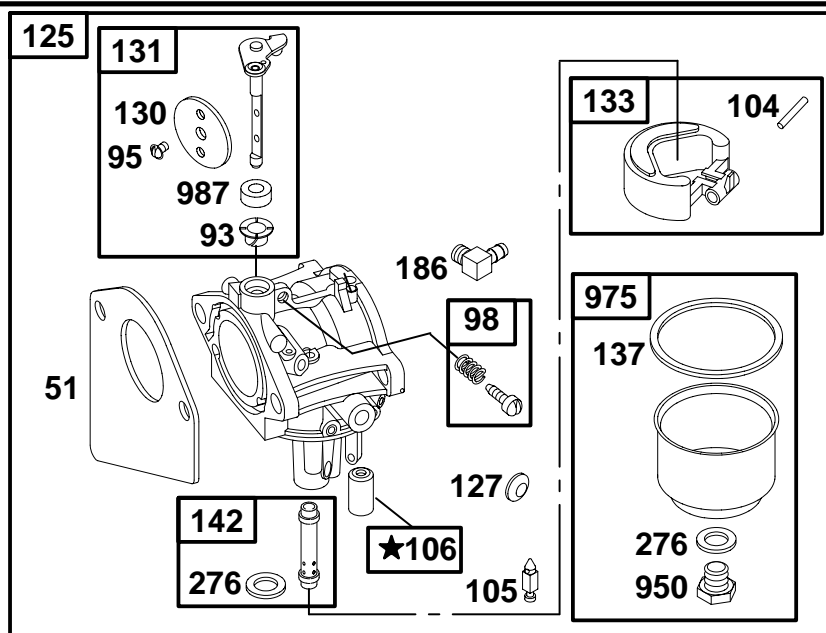
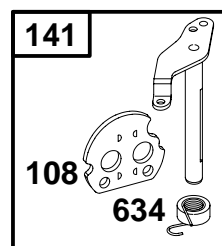


REF. NO.	PART NO.	DESCRIPTION	REF. NO.	PART NO.	DESCRIPTION	REF. NO.	PART NO.	DESCRIPTION
4	392548	Sump-Engine	15	94880	Plug-Oil Drain (Recessed Square)	43	491397	Slinger-Governor/Oil
12	★271701	Gasket-Crankcase (.015")	19	295963	Kit-Bushing/Seal (PTO Side)	46	214786	Camshaft
Note ★27876 Gasket-Crankcase (.005") ★27877 Gasket-Crankcase (.009")			20	★391086	Seal-Oil (PTO Side)	441	224872	Bracket-Oil Fill
			22	93585	Screw (Engine Sump)	449	94874	Screw (Oil Fill Bracket)
			22A	691103	Screw (Engine Sump) (Used in Position 1)	523	691387	Dipstick
						524	★281370	Seal-Dipstick Tube
						525	497419	Tube-Dipstick
						842	★270920	O-Ring Seal
						847	392066	Dipstick/Tube Assembly

★ Included in Engine Gasket Set-Ref. No. 358.
 ● Included in Carburetor Overhaul Kit-Ref. No. 121.

◆ Included in Carburetor Gasket Set-Ref. No. 977.
 Ø Included in Valve Gasket Set-Ref. No. 1095.

198700 to 198799

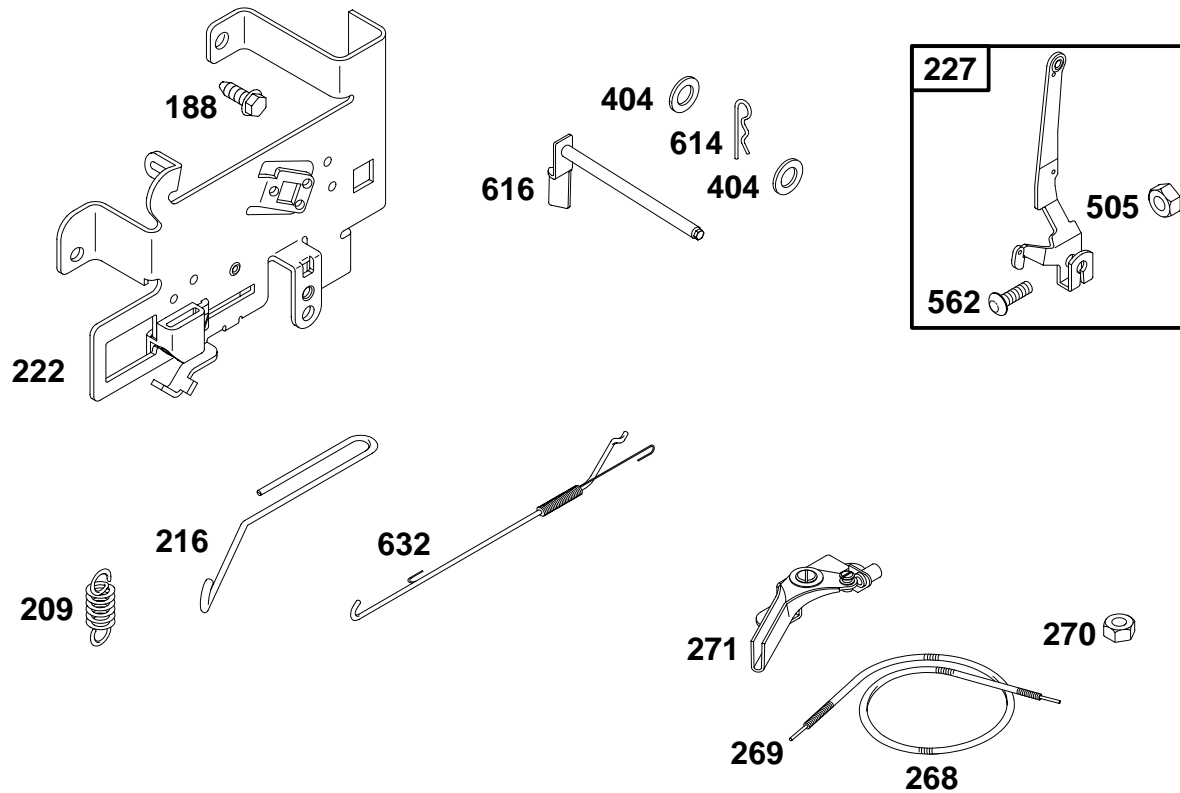


★ **REQUIRES SPECIAL TOOLS TO INSTALL. SEE REPAIR INSTRUCTION MANUAL.**

REF. NO.	PART NO.	DESCRIPTION	REF. NO.	PART NO.	DESCRIPTION	REF. NO.	PART NO.	DESCRIPTION
51	◆272465	Gasket-Intake (Intake Manifold to Carburetor)	108	692344	Valve-Choke (Choke A Matic)	142	690121	Nozzle-Carburetor
93	690602	Bushing-Throttle Shaft	125	692684	Carburetor	186	493496	Connector-Hose
95	◆94098	Screw (Throttle Valve)	127	◆695005	Plug-Welch	276	◆281164	Washer-Sealing
98	495800	Kit-Idle Speed	130	690468	Valve-Throttle	634	◆690802	Spring/Seal Assembly (Choke A Matic)
104	◆690525	Pin-Float Hinge	131	494885	Kit-Throttle Shaft	950	94642	Screw (Float Bowl)
105	◆231855	Valve-Float Needle	133	494381	Float-Carburetor	975	495933	Bowl-Float
106	◆231854	Seat-Inlet	137	◆281165	Gasket-Float Bowl	987	◆691326	Seal-Throttle Shaft
			141	495931	Kit-Choke Shaft (Choke A Matic)			

★ Included in Engine Gasket Set-Ref. No. 358.
◆ Included in Carburetor Overhaul Kit-Ref. No. 121.

◆ Included in Carburetor Gasket Set-Ref. No. 977.
Ø Included in Valve Gasket Set-Ref. No. 1095.

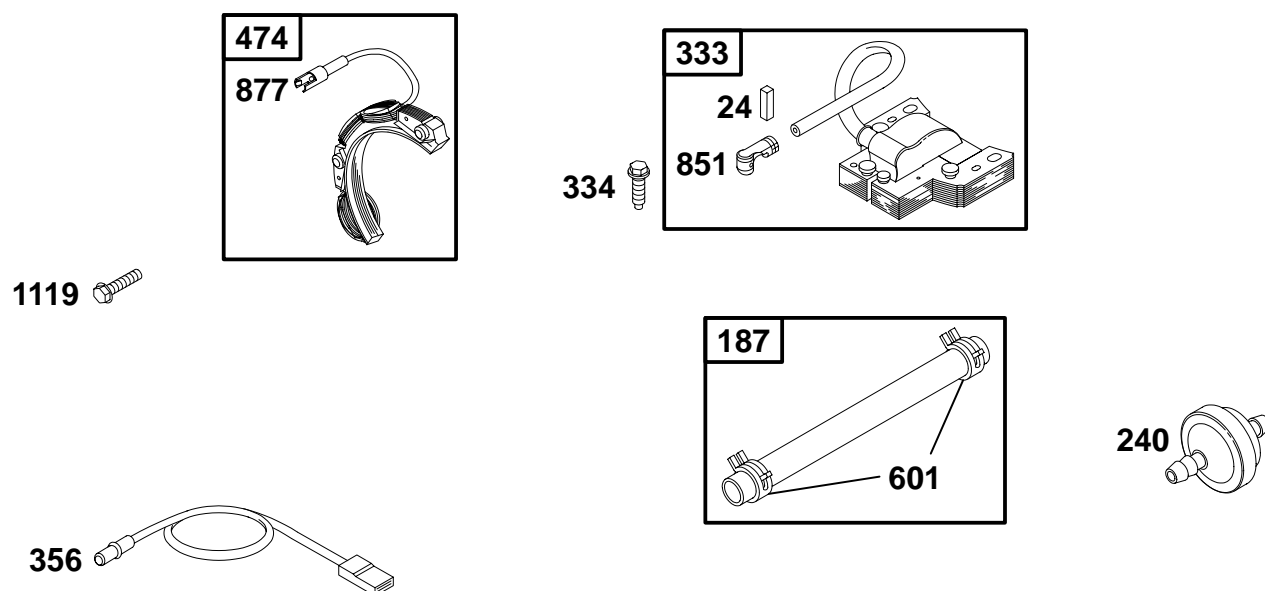


REF. NO.	PART NO.	DESCRIPTION	REF. NO.	PART NO.	DESCRIPTION	REF. NO.	PART NO.	DESCRIPTION
188	94929	Screw (Control Bracket)	227	691374	Lever—Governor Control	404	691251	Washer (Governor Crank)
209	260871	Spring—Governor	268	65616	Casing—Control Wire (Cut to Required Length)	505	231082	Nut (Governor Control Lever)
216	690573	Link—Choke	269	26633	Wire—Control (Cut to Required Length)	562	92613	Bolt (Governor Control Lever)
222	694042	Bracket—Control (Used After Code Date 99010600).	270	63426	Nut (Control Wire Casing)	614	93306	Pin—Cotter
Note 495611 Bracket— Control (Used Before Code Date 99010700).			271	290568	Lever—Control	616	495157	Crank—Governor
						632	693663	Spring/Link— Mechanical Governor

★ Included in Engine Gasket Set—Ref. No. 358.
● Included in Carburetor Overhaul Kit—Ref. No. 121.

◆ Included in Carburetor Gasket Set—Ref. No. 977.
Ø Included in Valve Gasket Set—Ref. No. 1095.

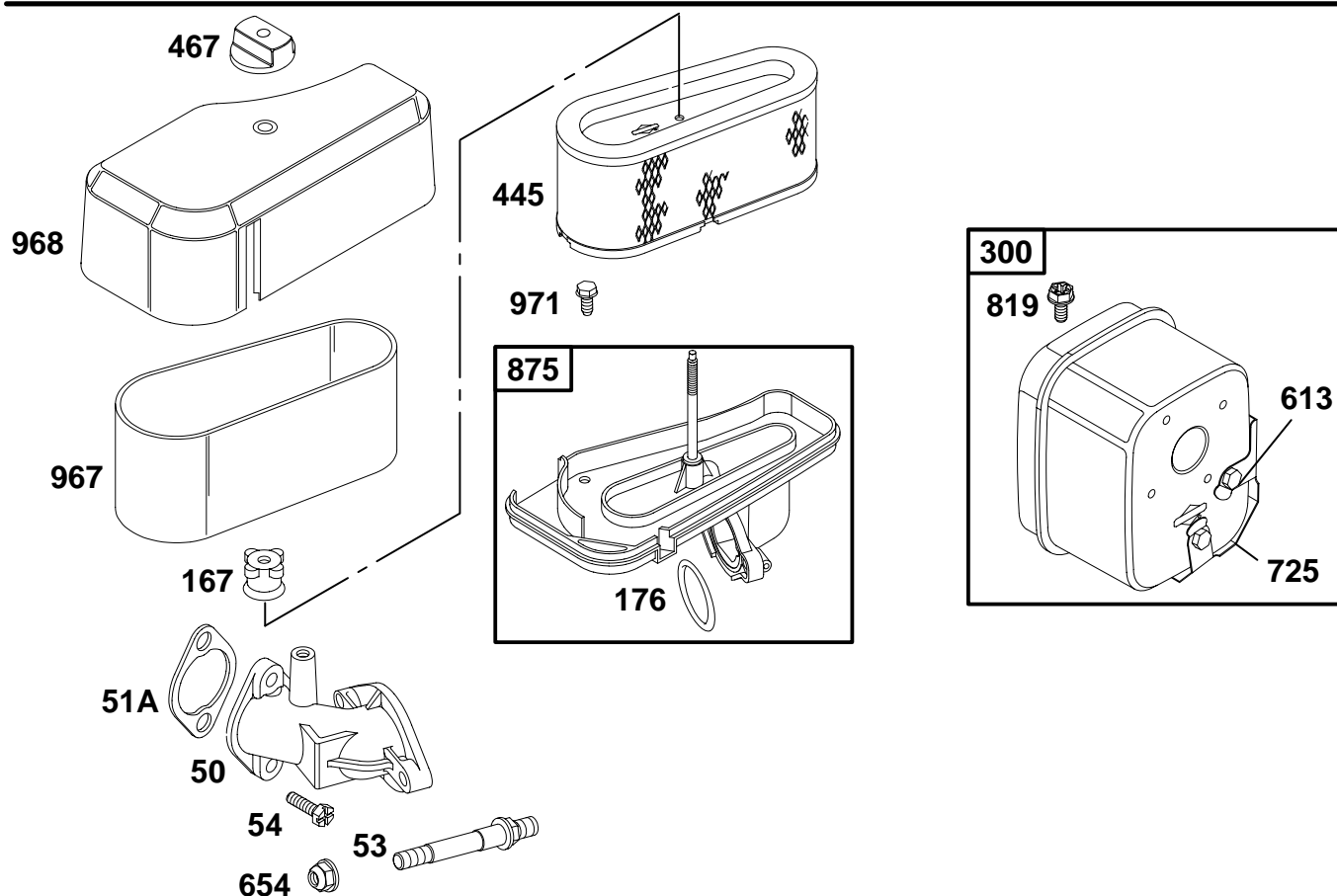
198700 to 198799



REF. NO.	PART NO.	DESCRIPTION	REF. NO.	PART NO.	DESCRIPTION	REF. NO.	PART NO.	DESCRIPTION
24	222698	Key-Flywheel	334	94731	Screw (Magneto Armature)	601	93053	Clamp-Hose
187	298049	Line-Fuel (Cut to Required Length)	356	690799	Wire-Stop (1 Wire Insulated Flat Terminal, Contact Socket)	851	493880	Terminal-Sparkplug
240	298090	Filter-Fuel	474	391529	Alternator (DC Only)	877	393814	Wire/Connector-Alternator (DC Only)
333	398811	Armature-Magneto				1119	93621	Screw (Alternator)

★ Included in Engine Gasket Set-Ref. No. 358.
 ● Included in Carburetor Overhaul Kit-Ref. No. 121.

◆ Included in Carburetor Gasket Set-Ref. No. 977.
 Ø Included in Valve Gasket Set-Ref. No. 1095.



REF. NO.	PART NO.	DESCRIPTION	REF. NO.	PART NO.	DESCRIPTION	REF. NO.	PART NO.	DESCRIPTION
50	213819	Manifold-Intake	300	494222	Muffler (Super Lo Tone)	819	94905	Screw (Muffler Bracket) (5/8" Long)
51A	Ø★272554	Gasket-Intake	445	493910	Filter-Air Cleaner Cartridge	875	693670	Base-Air Cleaner (Uses Foam Filter)
53	691098	Stud (Carburetor)	467	493903	Knob-Air Cleaner	967	272477	Filter-Pre Cleaner
54	93208	Screw (Intake Manifold)	613	94054	Screw (Muffler) (1/2" Long)	968	691324	Cover-Air Cleaner (Uses Foam Filter)
167	281051	Seal-Air Cleaner Nut	654	94010	Nut (Carburetor)	971	692126	Screw (Air Cleaner Base)
176	Ø★281106	O-Ring Seal (Air Cleaner Base)	725	690433	Shield-Heat			

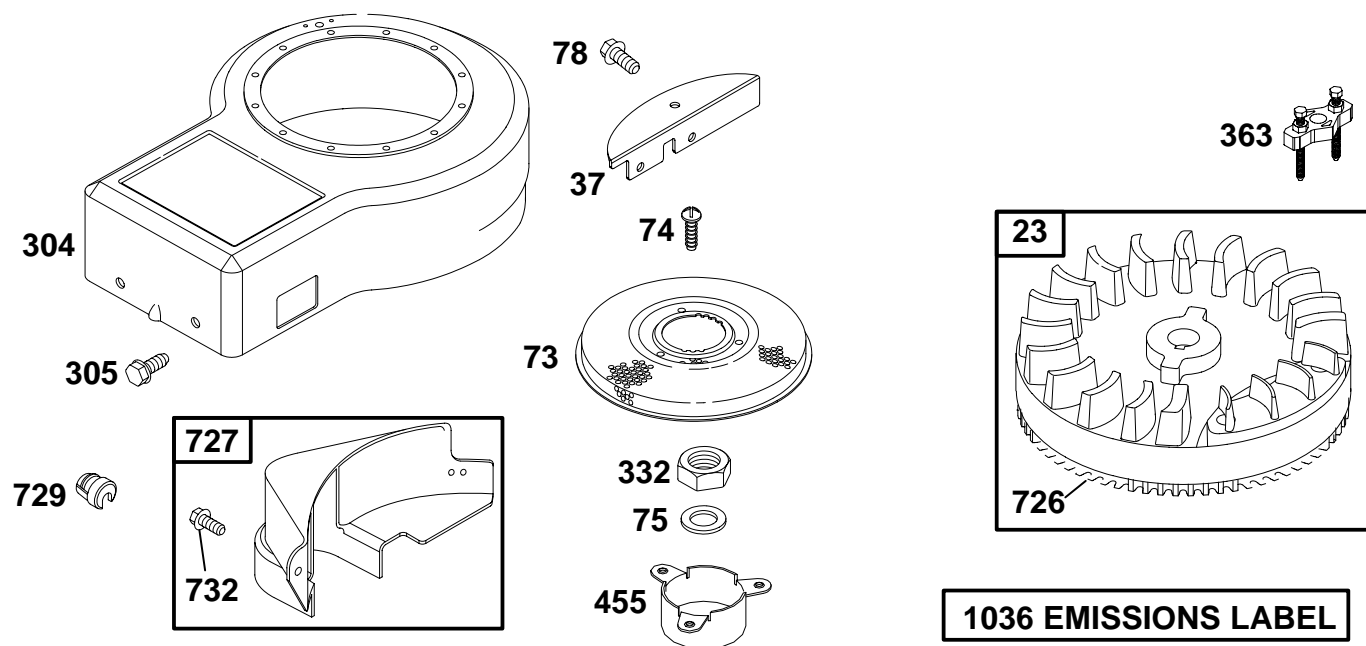
★ Included in Engine Gasket Set-Ref. No. 358.

● Included in Carburetor Overhaul Kit-Ref. No. 121.

◆ Included in Carburetor Gasket Set-Ref. No. 977.

Ø Included in Valve Gasket Set-Ref. No. 1095.

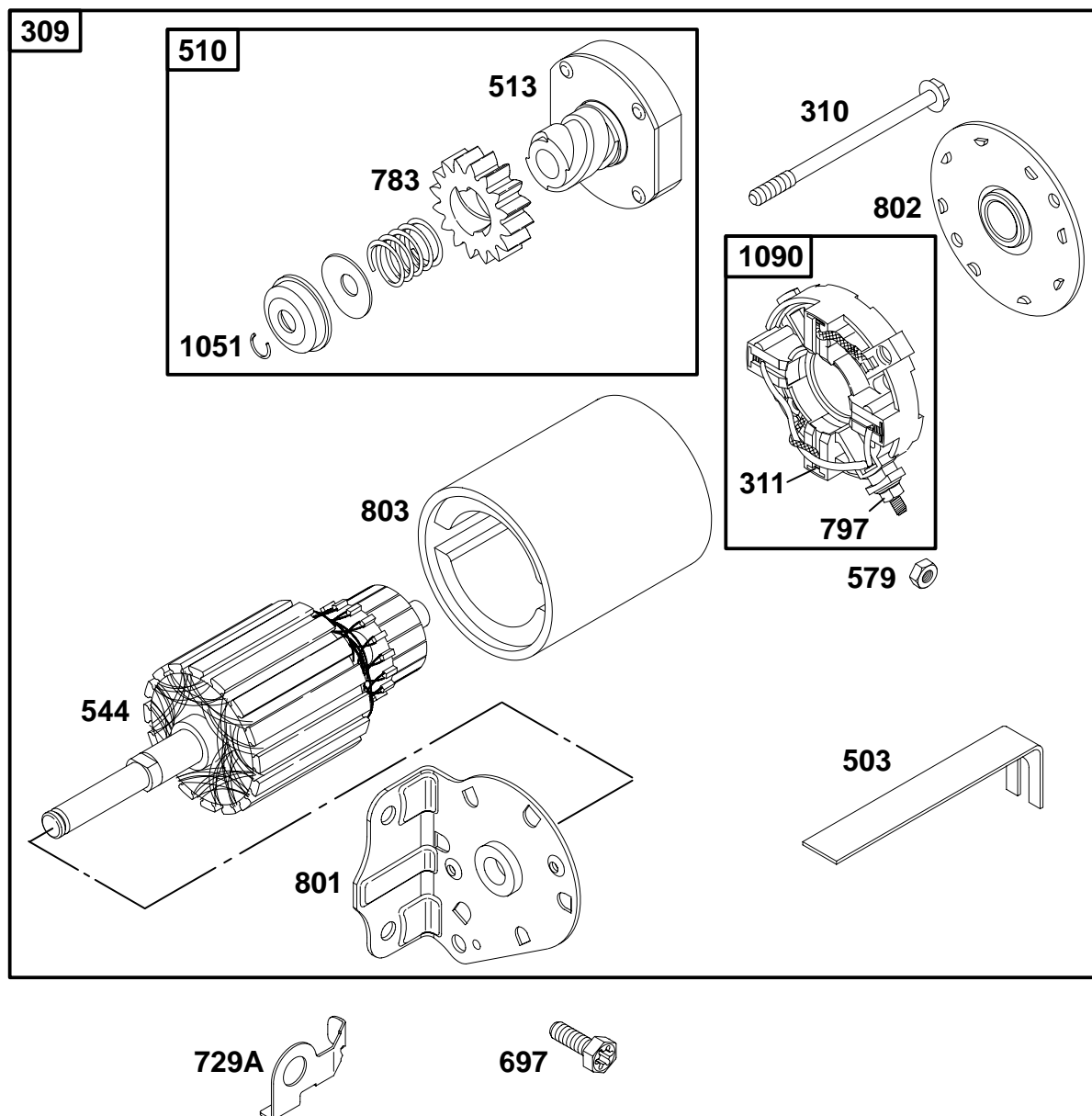
198700 to 198799



REF. NO.	PART NO.	DESCRIPTION	REF. NO.	PART NO.	DESCRIPTION	REF. NO.	PART NO.	DESCRIPTION
23	691354	Flywheel (Aluminum Ring Gear)	305	94786	Screw (Blower Housing)	1036	695697	Label-Emissions (Used After Code Date 00063000).
37	690411	Guard-Flywheel	332	693899	Nut (Flywheel)	Note 695096 Label-Emissions (Used Before Code Date 00070100 and After Code Date 99093000). 694305 Label-Emissions (Used Before Code Date 99100100 and After Code Date 98123100). 499356 Label-Emissions (Used Before Code Date 99010100).		
73	224517	Screen-Rotating (No Collar, Flush)	363	19165	Flywheel Puller			
74	94626	Screw (Rotating Screen)	455	691173	Cup-Flywheel (Straight Side)			
75	225136	Washer (Flywheel)	726	399676	Gear-Ring			
78	690364	Screw (Flywheel Guard)	727	395405	Cover-Starter Drive			
304	496439	Housing-Blower (Electric Start)	729	690603	Clip-Wire			
			732	691097	Screw (Starter Drive Cover)			

★ Included in Engine Gasket Set-Ref. No. 358.
 ● Included in Carburetor Overhaul Kit-Ref. No. 121.

◆ Included in Carburetor Gasket Set-Ref. No. 977.
 Ø Included in Valve Gasket Set-Ref. No. 1095.

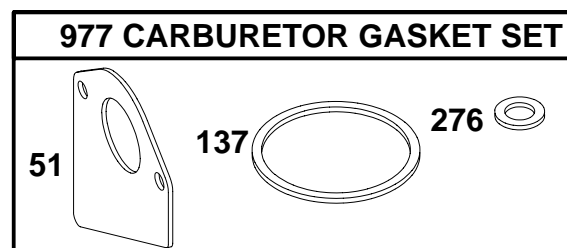
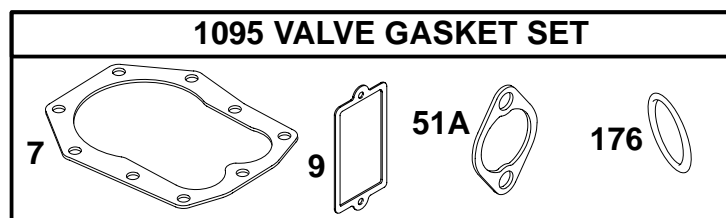
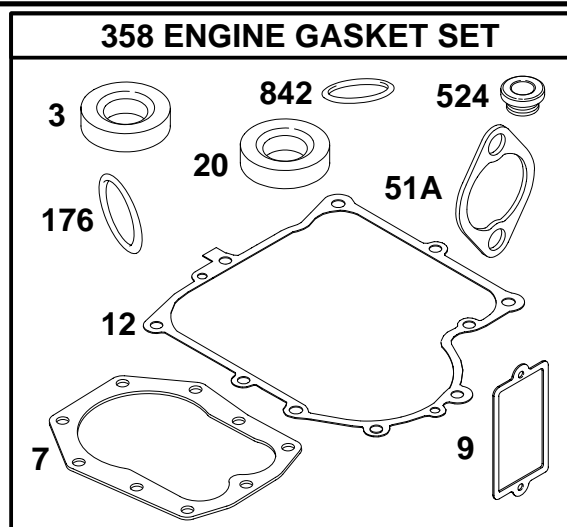
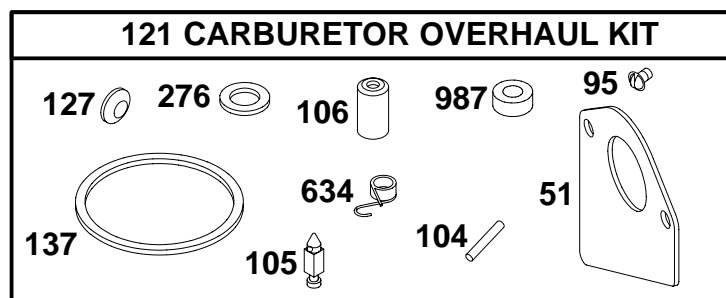


REF. NO.	PART NO.	DESCRIPTION	REF. NO.	PART NO.	DESCRIPTION	REF. NO.	PART NO.	DESCRIPTION
309	693054	Motor-Starter	579	92278	Nut (Starter Cable)	801	394856	Cap-Drive
310	690323	Bolt (Starter Motor)	697	690372	Screw (Drive Cap)	802	497607	Cap-End
311	497608	Brush Set	729A	691224	Clip-Wire	803	693757	Housing-Starter
503	691532	Strap-Starter	783	693059	Gear-Pinion	1051	263080	Ring-Retaining
510	497606	Drive-Starter	797	693167	Nut (Brush Retainer)	1090	497605	Retainer-Brush (Drive Cap)
513	398003	Clutch-Drive						
544	497603	Armature-Starter						

★ Included in Engine Gasket Set-Ref. No. 358.
● Included in Carburetor Overhaul Kit-Ref. No. 121.

◆ Included in Carburetor Gasket Set-Ref. No. 977.
Ø Included in Valve Gasket Set-Ref. No. 1095.

198700 to 198799



REF. NO.	PART NO.	DESCRIPTION	REF. NO.	PART NO.	DESCRIPTION	REF. NO.	PART NO.	DESCRIPTION
3	★391086	Seal—Oil (Magneto Side)	20	★391086	Seal—Oil (PTO Side)	176	Ø★281106	O-Ring Seal (Air Cleaner Base)
7	Ø★272163	Gasket—Cylinder Head	51	◆★272465	Gasket—Intake	276	◆★281164	Washer—Sealing
9	Ø★27803	Gasket—Breather	51A	Ø★272554	Gasket—Intake	358	299577	Engine Gasket Set
12	★271701	Gasket—Crankcase (.015")	95	◆94098	Screw (Throttle Valve)	524	★281370	Seal—Dipstick Tube
Note			104	◆690525	Pin—Float Hinge	634	◆690802	Spring/Seal Assembly
		★27876 Gasket— Crankcase (.005")	105	◆231855	Valve—Float Needle	842	★270920	Dipstick/Tube Seal
		★27877 Gasket— Crankcase (.009")	106	◆231854	Seat—Inlet	977	494385	Gasket Set—Carburetor
			121	497535	Kit—Carburetor	987	◆691326	Seal—Throttle Shaft
			127	◆695005	Plug—Welch	1095	498536	Gasket Set—Valve
			137	◆★281165	Gasket—Float Bowl			

★ Included in Engine Gasket Set—Ref. No. 358.
 ◆ Included in Carburetor Overhaul Kit—Ref. No. 121.

◆ Included in Carburetor Gasket Set—Ref. No. 977.
 Ø Included in Valve Gasket Set—Ref. No. 1095.