

**197700 to 197799**

# **Illustrated Parts List**

## **Model Series**

### **197700 to 197799**

#### **TYPE NUMBERS**

0119, 0120, 0122,  
0123, 0141, 1015,  
1025, 1026.

#### **TO FIND**

#### **THE CORRECT NUMBER OF THE PART YOU NEED: FOLLOW THE INSTRUCTIONS BELOW**

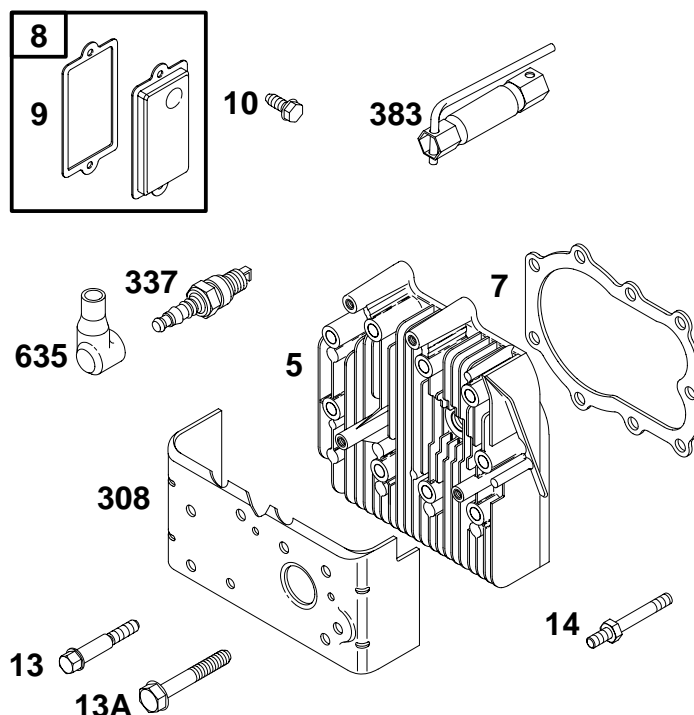
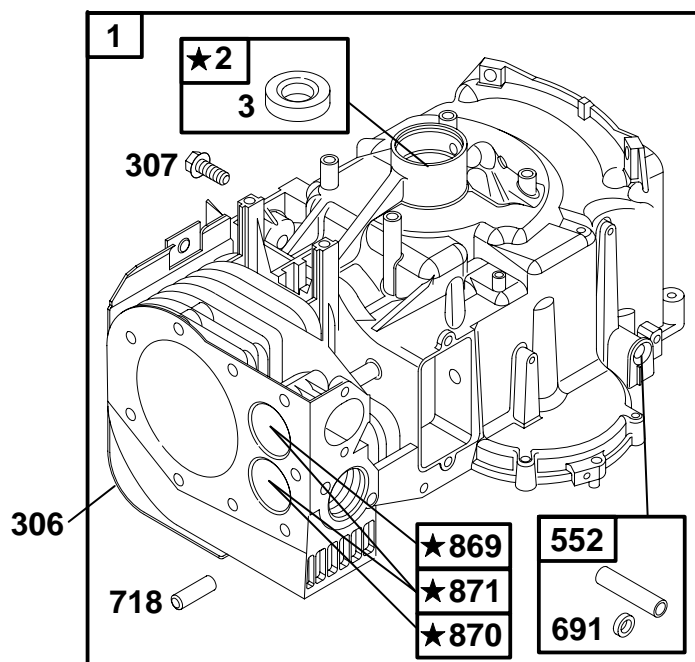
- A. Refer to Engine Model, Type and Code Number that is stamped on the blower housing of engine. Engine type numbers such as 0123 01 are listed only as 0123 in most instances. The two digits (01 or 02, etc.) to the right of the space may be required for more accurate parts identification in some instances. Select the Illustrated Parts List covering the correct Model Series and Type Number.
- B. Refer to the Illustrations and compare the original part with Illustration. The number next to the illustration is the Reference Number. Assemblies include all parts shown in frames. All parts shown in assembly frames having individual reference numbers can be purchased separately.
- C. After the Reference Number has been identified, refer to the Numerical text, where Reference and Primary Part Number are listed. **THE PRIMARY PART IS USED ON ALL TYPE NUMBERS EXCEPT THOSE TYPE NUMBERS UNDER "NOTE."**
- D. If a "Note" appears below the Primary Part Number, it means that this part differs from the Primary Part for certain types. If your Type number is listed under "Note," order the part referred to at the "Note."
- E. If your Engine Type Number does not appear after any part number listed under "Note," use the Primary Part Number.
- F. For Engine Type Numbers not covered by this book, check other Parts Lists having the same engine model or contact your source of supply.

PRINTED IN U.S.A.



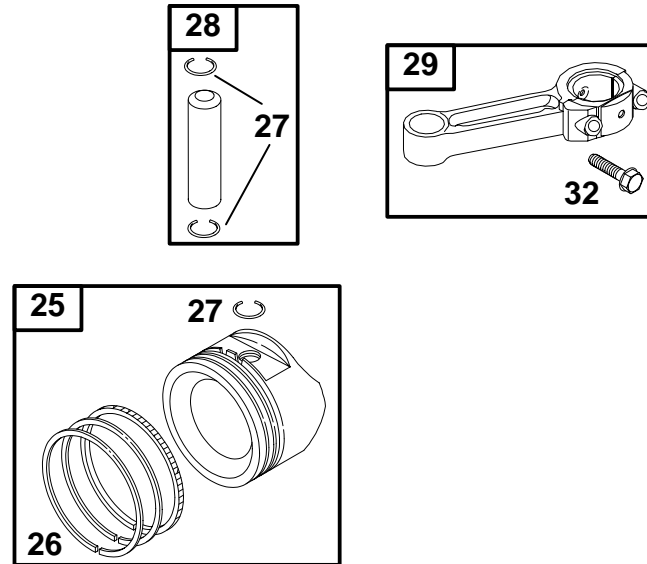
COPYRIGHT by BRIGGS & STRATTON CORPORATION  
All rights reserved. No part of this material may be reproduced or transmitted, in any form or by any means, electronic or mechanical, including photocopying, recording or by any information storage and retrieval system, without permission in writing from Briggs & Stratton Corporation.

**11** 



1058 OWNER'S MANUAL

◆ Included in Carburetor Gasket Set—Ref. 977.  
 Ø Included in Valve Gasket Set—Ref. 1095.



| REF. NO. | PART NO. | DESCRIPTION   | REF. NO. | PART NO. | DESCRIPTION  | REF. NO. | PART NO. | DESCRIPTION  |
|----------|----------|---|----------|----------|--|----------|----------|--|
| 25       | 499907   | Piston Assembly (Standard)<br>———— <b>Note</b> ———<br>499908 Piston Assembly (.010" O.S.)<br>499909 Piston Assembly (.020" O.S.)<br>499910 Piston Assembly (.030" O.S.) | 26       | 391669   | Ring Set (Standard)<br>———— <b>Note</b> ———<br>299743 Ring Set (Standard Chrome)<br>391670 Ring Set (.010" O.S.)<br>391671 Ring Set (.020" O.S.)<br>690020 Ring Set (.030" O.S.) | 27       | 263181   | Lock-Piston Pin  |
|          |          |   |          |          |  | 28       | 295840   | Pin-Piston (Standard)<br>———— <b>Note</b> ———<br>295841 Pin-Piston (.005" O.S.)              |
|          |          |   |          |          |  | 29       | 390402   | Rod-Connecting (Standard)<br>———— <b>Note</b> ———<br>390773 Rod-Connecting (.020" Undersize) |
|          |          |   |          |          |  | 32       | 690352   | Screw (Connecting Rod)   |

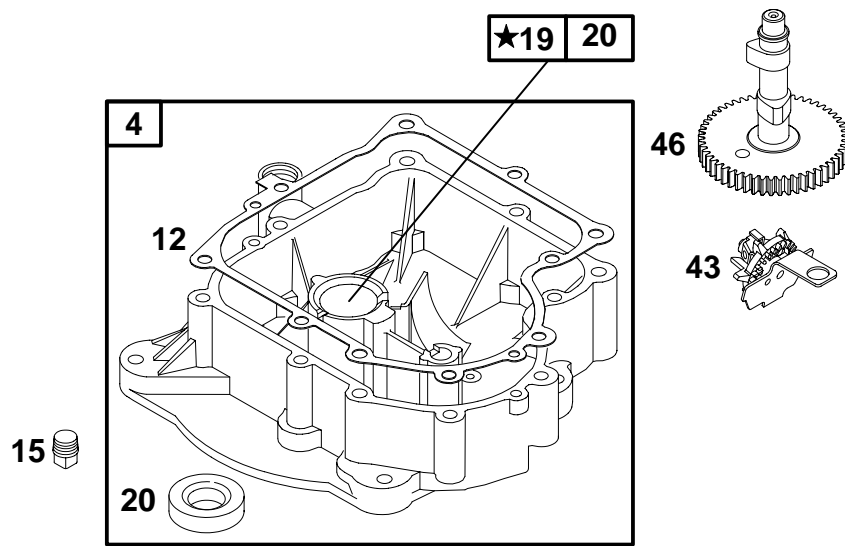
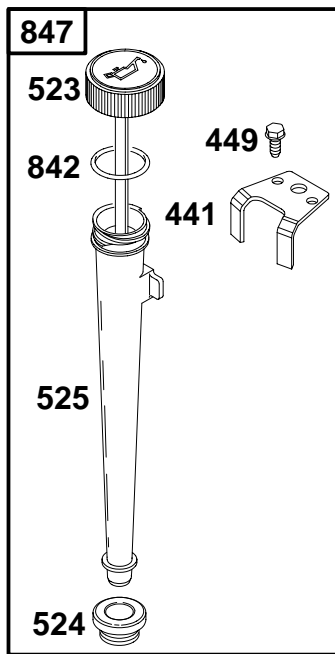
★ Included in Engine Gasket Set-Ref. 358.  
● Included in Carburetor Overhaul Kit-Ref. 121.

◆ Included in Carburetor Gasket Set-Ref. 977.  
◊ Included in Valve Gasket Set-Ref. 1095.

◆ Included in Carburetor Gasket Set—Ref. 977.  
 Ø Included in Valve Gasket Set—Ref. 1095.

4

K&T Saw Shop 606-678-9623 or 606-561-4983



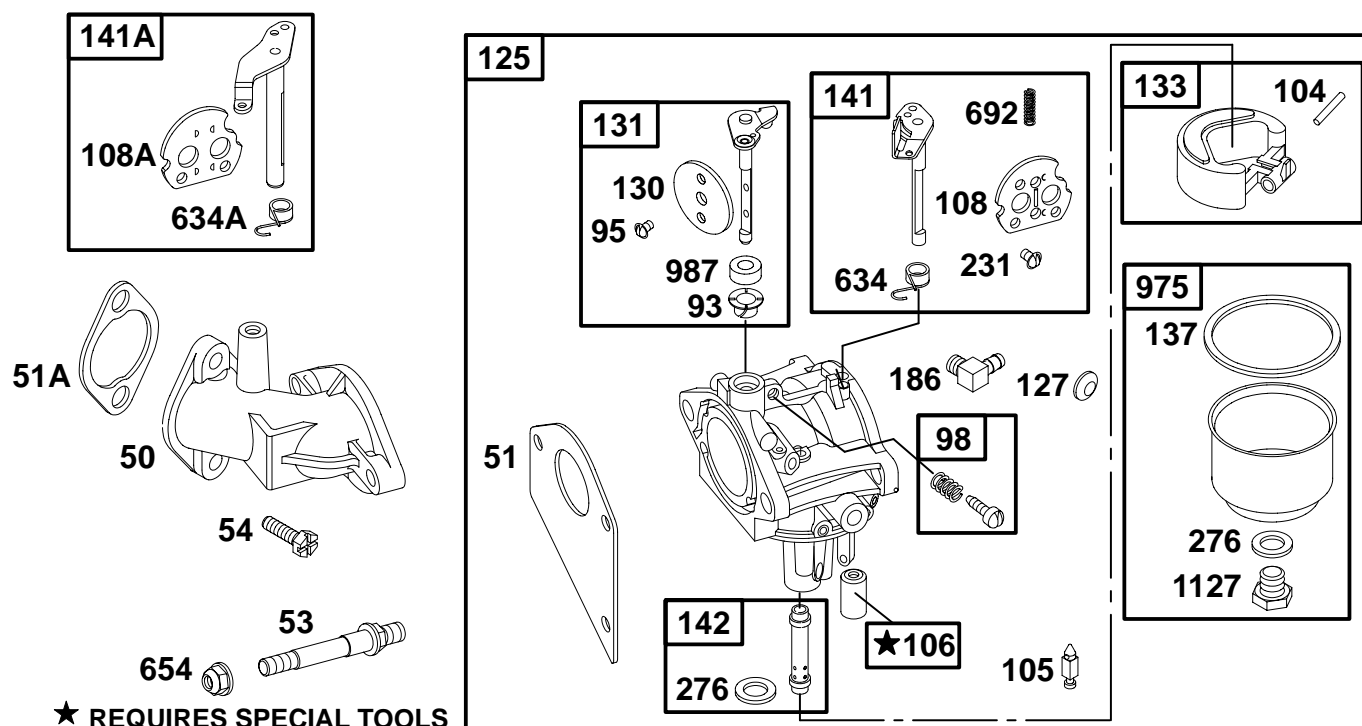
★ **REQUIRES SPECIAL TOOLS  
TO INSTALL. SEE REPAIR  
INSTRUCTION MANUAL.**

| REF.<br>NO. | PART<br>NO. | DESCRIPTION                            | REF.<br>NO. | PART<br>NO. | DESCRIPTION   | REF.<br>NO. | PART<br>NO. | DESCRIPTION                    |
|-------------|-------------|--|-------------|-------------|---|-------------|-------------|--------------------------------|
| 4           | 392548      | Sump—Engine                            | 19          | 295963      | Kit—Bushing/Seal<br>(PTO Side)                              | 46          | 214786      | Camshaft                       |
| 12          | ★271701     | Gasket—Crankcase<br>(.015" Standard)   | 20          | ★391086     | Seal—Oil<br>(PTO Side)                                      | 441         | 224872      | Bracket—Oil Fill               |
|             |             | <b>Note</b>                            | 22          | 93585       | Screw<br>(Crankcase Cover/<br>Sump)                         | 449         | 94874       | Screw<br>(Oil Fill Bracket)    |
|             |             | ★27876 Gasket—<br>Crankcase<br>(.005") | 22A         | 691103      | Screw<br>(Crankcase Cover/<br>Sump)<br>(Used in Position 1) | 523         | 691387      | Dipstick                       |
|             |             | ★27877 Gasket—<br>Crankcase<br>(.009") | 43          | 491397      | Slinger—Governor/Oil  | 524         | ★281370     | Seal—Dipstick Tube             |
| 15          | 94239       | Plug—Oil Drain<br>(Square Head)        |             |             |   | 525         | 497419      | Tube—Dipstick                  |
|             |             |  |             |             |   | 842         | ★270920     | O—Ring Seal<br>(Dipstick/Tube) |
|             |             |  |             |             |   | 847         | 392066      | Dipstick/Tube<br>Assembly      |

★ Included in Engine Gasket Set—Ref. 358.  
● Included in Carburetor Overhaul Kit—Ref. 121.

◆ Included in Carburetor Gasket Set—Ref. 977.  
⊘ Included in Valve Gasket Set—Ref. 1095.

# 197700 to 197799

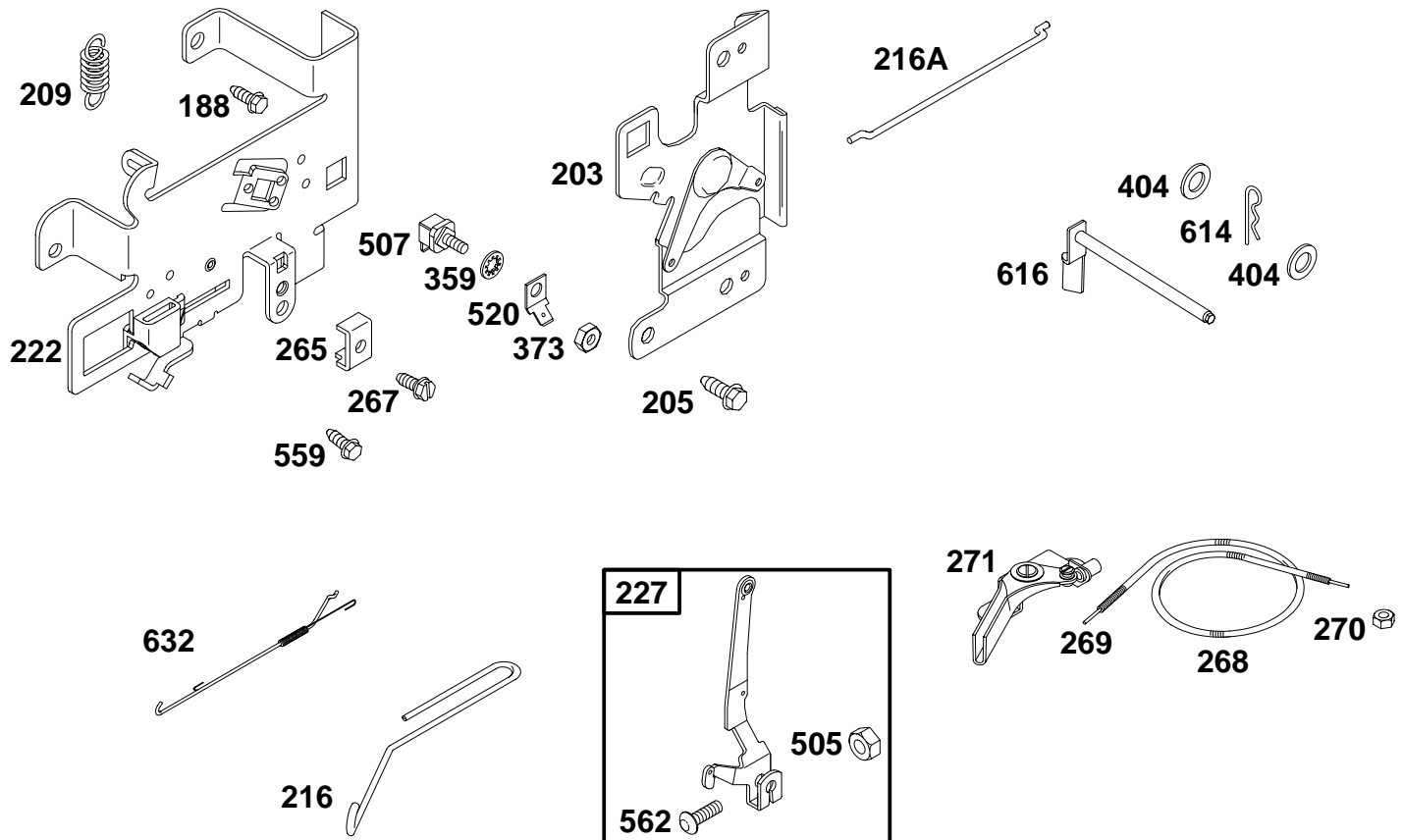


★ **REQUIRES SPECIAL TOOLS TO INSTALL. SEE REPAIR INSTRUCTION MANUAL.**

| REF. NO. | PART NO. | DESCRIPTION                                   | REF. NO. | PART NO.    | DESCRIPTION                       | REF. NO. | PART NO. | DESCRIPTION                           |
|----------|----------|---|----------|-------------|-----------------------------------|----------|----------|---------------------------------------|
| 50       | 213819   | Manifold-Intake                               | 108      | 690464      | Valve-Choke (Manual Choke)        | 186      | 493496   | Connector-Hose                        |
| 51       | ◆272465  | Gasket-Intake (Intake Manifold to Carburetor) | 108A     | 692344      | Valve-Choke (Choke A Matic®)      | 231      | 94098    | Screw (Choke Valve)                   |
| 51A      | ○★272554 | Gasket-Intake (Intake Manifold to Cylinder)   | 125      | 692684      | Carburetor                        | 276      | ◆281164  | Washer-Sealing                        |
| 53       | 691098   | Stud (Carburetor)                             | 127      | ◆694530     | Plug-Welch                        | 634      | ◆690801  | Spring/Seal Assembly (Manual Choke)   |
| 54       | 94913    | Screw (Intake Manifold)                       | 130      | 690468      | Valve-Throttle                    | 634A     | ◆690802  | Spring/Seal Assembly (Choke A Matic®) |
| 93       | 690602   | Bushing-Throttle Shaft                        | 131      | 494885      | Kit-Throttle Shaft                | 654      | 94010    | Nut (Carburetor)                      |
| 95       | ◆94098   | Screw (Throttle Valve)                        | 133      | 494381      | Float-Carburetor                  | 692      | 690572   | Spring-Detent                         |
| 98       | 495800   | Kit-Idle Speed                                | 137      | ◆281165     | Gasket-Float Bowl                 | 975      | 495933   | Bowl-Float                            |
| 104      | ◆690525  | Pin-Float Hinge                               | 141      | 495097      | Kit-Choke Shaft (Manual Choke)    | 987      | ◆691326  | Seal-Throttle Shaft                   |
| 105      | ◆231855  | Valve-Float Needle                            | 141A     | 495931      | Kit-Choke Shaft (Choke A Matic®)  | 1127     | 94642    | Screw (Float Bowl)                    |
| 106      | ◆231854  | Seat-Inlet                                    | 142      | 690121      | Nozzle-Carburetor (Standard)      |          |          |                                       |
|          |          |   |          | <b>Note</b> |                                   |          |          |                                       |
|          |          |   |          | 692688      | Nozzle-Carburetor (High Altitude) |          |          |                                       |

★ Included in Engine Gasket Set-Ref. 358.  
 ◆ Included in Carburetor Overhaul Kit-Ref. 121.

◆ Included in Carburetor Gasket Set-Ref. 977.  
 ○ Included in Valve Gasket Set-Ref. 1095.

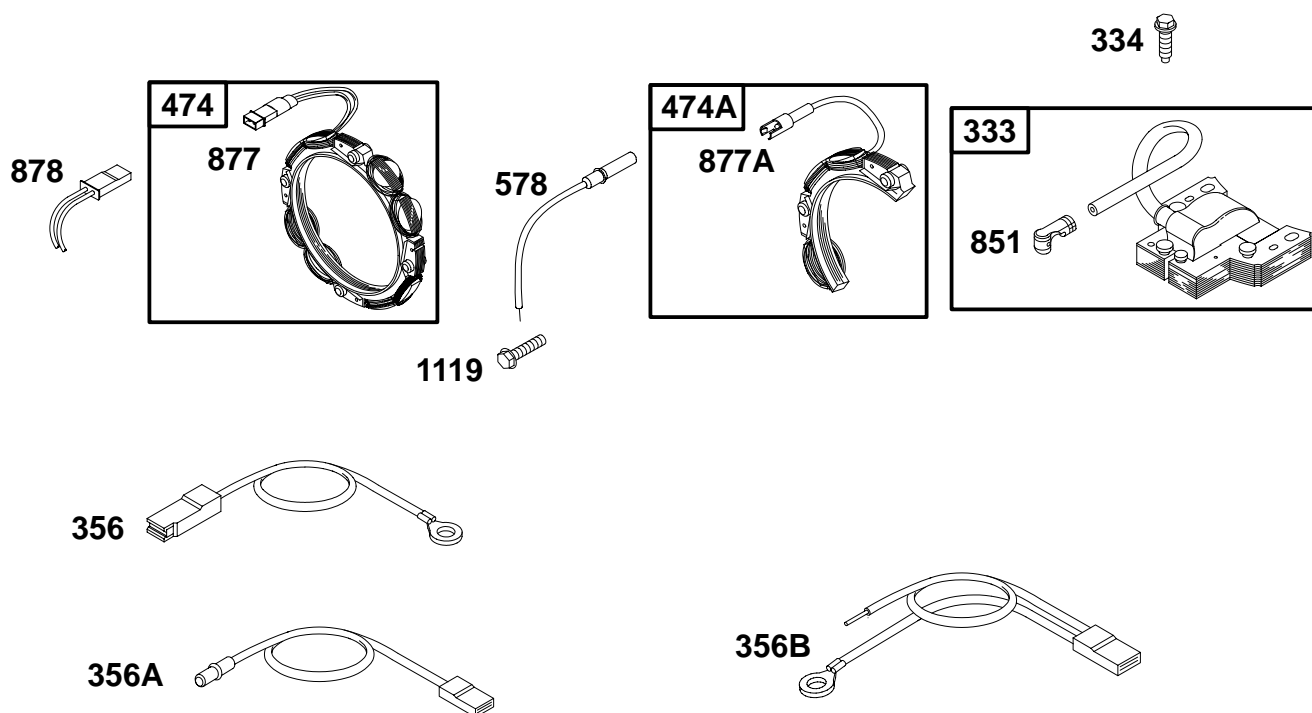


| REF. NO. | PART NO. | DESCRIPTION  | REF. NO. | PART NO. | DESCRIPTION  | REF. NO. | PART NO. | DESCRIPTION                         |
|----------|----------|--|----------|----------|--|----------|----------|-------------------------------------|
| 188      | 94929    | Screw<br>(Control Bracket)                                     | 265      | 221535   | Clamp-Casing                                       | 505      | 691251   | Nut<br>(Governor Control<br>Lever)  |
| 203      | 691381   | Crank-Bell   | 267      | 94906    | Screw<br>(Casing Clamp)                            | 507      | 398525   | Insulator                           |
| 205      | 94929    | Screw<br>(Bell Crank)  | 268      | 65616    | Casing-Control Wire<br>(Cut to Required<br>Length) | 520      | 691084   | Terminal-Ground                     |
| 209      | 260871   | Spring-Governor  | 269      | 26633    | Wire-Control<br>(Cut to Required<br>Length)        | 559      | 94896    | Screw<br>(Remote Choke Stop)        |
| 216      | 690573   | Link-Choke   | 270      | 63426    | Nut<br>(Control Wire Casing)                       | 562      | 92613    | Bolt<br>(Governor Control<br>Lever) |
| 216A     | 691281   | Link-Choke   | 271      | 290568   | Lever-Control                                      | 614      | 93306    | Pin-Cotter                          |
| 222      | 694042   | Bracket-Control<br>(Used After Code Date<br>99010600).         | 359      | 691077   | Washer<br>(Ground Terminal)                        | 616      | 495157   | Crank-Governor                      |
|          |          | <b>Note</b> ———  | 373      | 90576    | Nut<br>(Ground Terminal)                           | 632      | 693663   | Spring/Link-Mechanical Governor     |
|          |          | 495611 Bracket-Control<br>(Used Before Code<br>Date 99010700). | 404      | 94927    | Washer<br>(Governor Crank)                         |          |          |                                     |
| 227      | 691374   | Lever-Governor<br>Control                                      |          |          |  |          |          |                                     |

★ Included in Engine Gasket Set-Ref. 358.  
● Included in Carburetor Overhaul Kit-Ref. 121.

◆ Included in Carburetor Gasket Set-Ref. 977.  
⊘ Included in Valve Gasket Set-Ref. 1095.

# 197700 to 197799

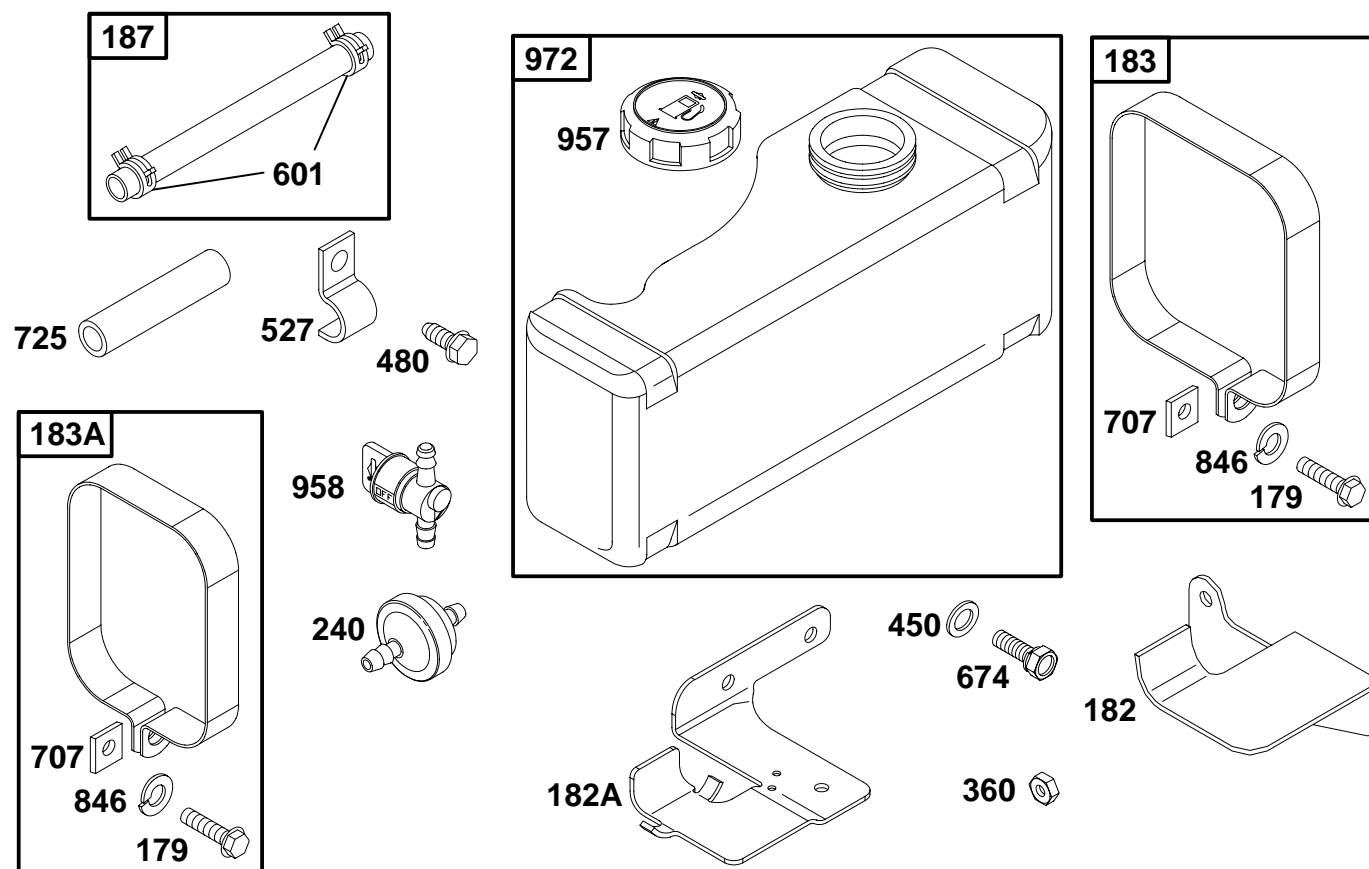


| REF. NO. | PART NO. | DESCRIPTION  | REF. NO. | PART NO. | DESCRIPTION  | REF. NO. | PART NO. | DESCRIPTION                              |
|----------|----------|--|----------|----------|--|----------|----------|--|
| 333      | 398811   | Armature—Magneto   | 356B     | 398808   | Wire—Stop<br>(1 Wire Insulated Flat Terminal, Ring Tongue/Bare Wire) | 877      | 393456   | Wire/Connector—Alternator (Dual Circuit) |
| 334      | 94731    | Screw (Magneto Armature)   | 474      | 393474   | Alternator (Dual Circuit)  | 877A     | 393814   | Wire/Connector—Alternator (DC Only)      |
| 356      | 399223   | Wire—Stop (1 Wire Insulated Flat Terminal, Ring Tongue Terminal) | 474A     | 391529   | Alternator (DC Only)   | 878      | 393362   | Harness—Alternator (Dual Circuit)        |
| 356A     | 690799   | Wire—Stop (1 Wire Insulated Flat Terminal, Contact Socket)       | 578      | 393422   | Wire Assembly  | 1119     | 93621    | Screw (Alternator)                       |
|          |          |  | 851      | 493880   | Terminal—Sparkplug   |          |          |  |

★ Included in Engine Gasket Set—Ref. 358.  
● Included in Carburetor Overhaul Kit—Ref. 121.

◆ Included in Carburetor Gasket Set—Ref. 977.  
⌀ Included in Valve Gasket Set—Ref. 1095.



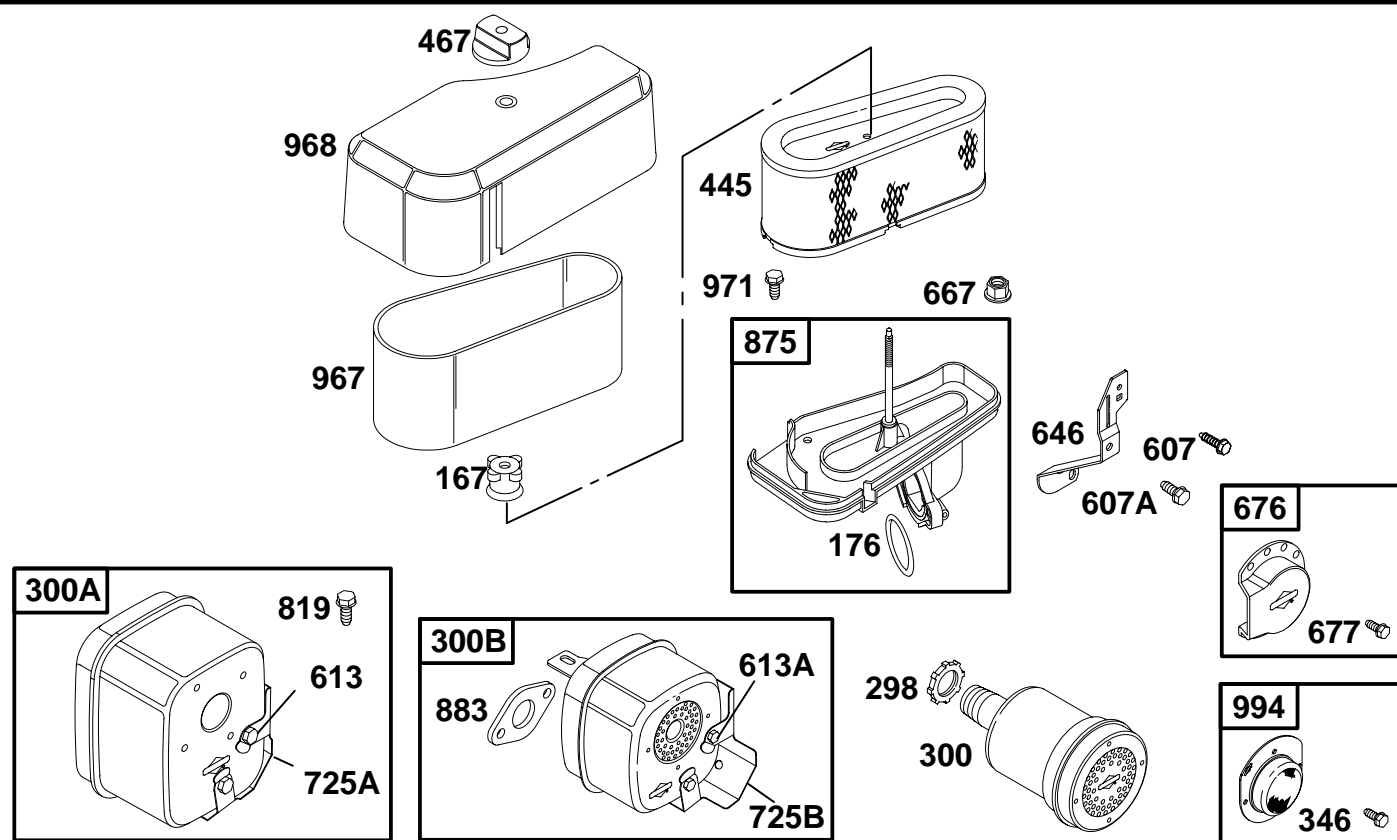


| REF. NO. | PART NO. | DESCRIPTION                           | REF. NO.    | PART NO. | DESCRIPTION   | REF. NO.    | PART NO. | DESCRIPTION  |
|----------|----------|---------------------------------------|-------------|----------|---|-------------|----------|--|
| 179      | 692331   | Screw<br>(Fuel Tank Strap)            | 240         | 298090   | Filter–Fuel   | 674         | 94627    | Screw<br>(Fuel Tank Bracket)<br>(Used on Rewind Start Engines; 47/64 Long) |
| 182      | 691214   | Bracket–Fuel Tank<br>(R.H.)           | 360         | 94726    | Nut<br>(Fuel Tank Bracket)  | <b>Note</b> |          |  |
| 182A     | 692867   | Bracket–Fuel Tank<br>(L.H.)           | 450         | 22963    | Washer<br>(Fuel Tank Bracket)<br>(4 Used on Rewind Start Engines) | <b>Note</b> |          |  |
| 183      | 496853   | Strap–Fuel Tank<br>(R.H.)             | <b>Note</b> |          |   | 707         | 690279   | Nut<br>(Fuel Tank Strap)   |
| 183A     | 496852   | Strap–Fuel Tank<br>(L.H.)             | <b>Note</b> |          |   | 725         | 690403   | Shield–Heat<br>(Tubular)   |
| 187      | 296004   | Line–Fuel<br>(Cut to Required Length) | <b>Note</b> |          |   | 846         | 90832    | Washer<br>(Fuel Tank Strap)  |
|          |          |                                       | 480         | 94874    | Screw<br>(Tube Clamp)   | 957         | 493988   | Cap–Fuel Tank<br>(Plastic)   |
|          |          |                                       | 527         | 690394   | Clamp–Tube  | 958         | 494768   | Valve–Fuel Shut Off  |
|          |          |                                       | 601         | 93053    | Clamp–Hose  | 972         | 390225   | Tank–Fuel  |

★ Included in Engine Gasket Set–Ref. 358.  
● Included in Carburetor Overhaul Kit–Ref. 121.

◆ Included in Carburetor Gasket Set–Ref. 977.  
◊ Included in Valve Gasket Set–Ref. 1095.

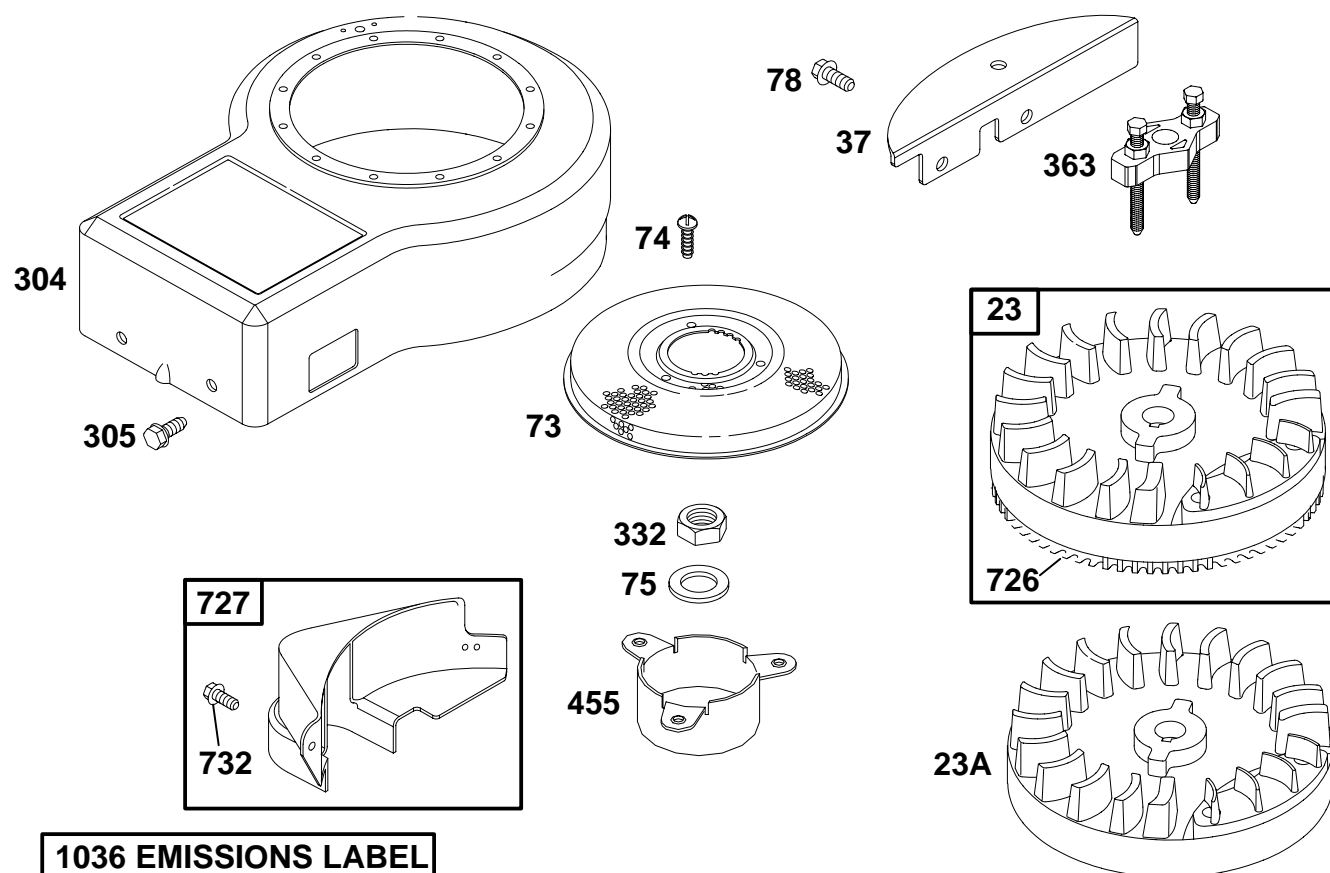
# 197700 to 197799



| REF. NO. | PART NO. | DESCRIPTION            | REF. NO. | PART NO. | DESCRIPTION           | REF. NO. | PART NO. | DESCRIPTION           |
|----------|----------|------------------------|----------|----------|-----------------------|----------|----------|-----------------------|
| 167      | 281051   | Seal—Air Cleaner Nut   | 613A     | 94042    | Screw                 | 883      | 272309   | Gasket—Exhaust        |
| 176      | 281106   | O—Ring Seal            |          |          | (Muffler)             | 967      | 272477   | Filter—Pre Cleaner    |
|          |          | (Air Cleaner Base)     |          |          | (1/2" Long)           | 968      | 691324   | Cover—Air Cleaner     |
| 298      | 261409   | Locknut—Muffler/Elbow  | 646      | 690465   | Brace—Air Cleaner     |          |          | (Uses Foam Filter)    |
| 300      | 393010   | Muffler                | 667      | 94010    | Nut                   | 971      | 692126   | Screw                 |
|          |          | (Round Lo Tone)        |          |          | (Air Cleaner Brace)   |          |          | (Air Cleaner Base)    |
| 300A     | 494222   | Muffler                | 676      | 393757   | Deflector—Muffler     |          |          | (Used After Code Date |
|          |          | (Super Lo Tone)        |          |          | (Side Out)            |          |          | 98091300).            |
| 300B     | 398507   | Muffler                | 677      | 94896    | Screw                 |          |          | <b>Note</b>           |
|          |          | (Lo Tone, Heat Shield) |          |          | (Muffler Deflector)   |          |          | 692198                |
| 346      | 94896    | Screw                  | 725A     | 690433   | Shield—Heat           |          |          | Screw                 |
|          |          | (Spark Arrestor)       | 725B     | 690431   | Shield—Heat           |          |          | (Air Cleaner Base)    |
| 445      | 493910   | Filter—Air Cleaner     | 819      | 94905    | Screw                 |          |          | (Used Before Code     |
|          |          | Cartridge              |          |          | (Muffler Bracket)     | 994      | 399541   | Date 98091400).       |
| 467      | 493903   | Knob—Air Cleaner       |          |          | (5/8" Long)           |          |          | Arrestor—Spark        |
| 607      | 94929    | Screw                  | 875      | 693670   | Base—Air Cleaner      |          |          |                       |
|          |          | (Air Cleaner Brace)    |          |          | (Uses Foam Filter)    |          |          |                       |
|          |          | (3/8" Long)            |          |          | (Used After Code Date |          |          |                       |
| 607A     | 691693   | Screw                  |          |          | 98091300).            |          |          |                       |
|          |          | (Air Cleaner Brace)    |          |          | <b>Note</b>           |          |          |                       |
|          |          | (7/16" Long)           |          |          | 494827                |          |          |                       |
| 613      | 94054    | Screw                  |          |          | Base—Air              |          |          |                       |
|          |          | (Muffler)              |          |          | Cleaner               |          |          |                       |
|          |          | (1/2" Long)            |          |          | (Uses Foam Filter)    |          |          |                       |
|          |          |                        |          |          | (Used Before Code     |          |          |                       |
|          |          |                        |          |          | Date 98091400).       |          |          |                       |

★ Included in Engine Gasket Set-Ref. 358.  
● Included in Carburetor Overhaul Kit-Ref. 121.

◆ Included in Carburetor Gasket Set-Ref. 977.  
○ Included in Valve Gasket Set-Ref. 1095.

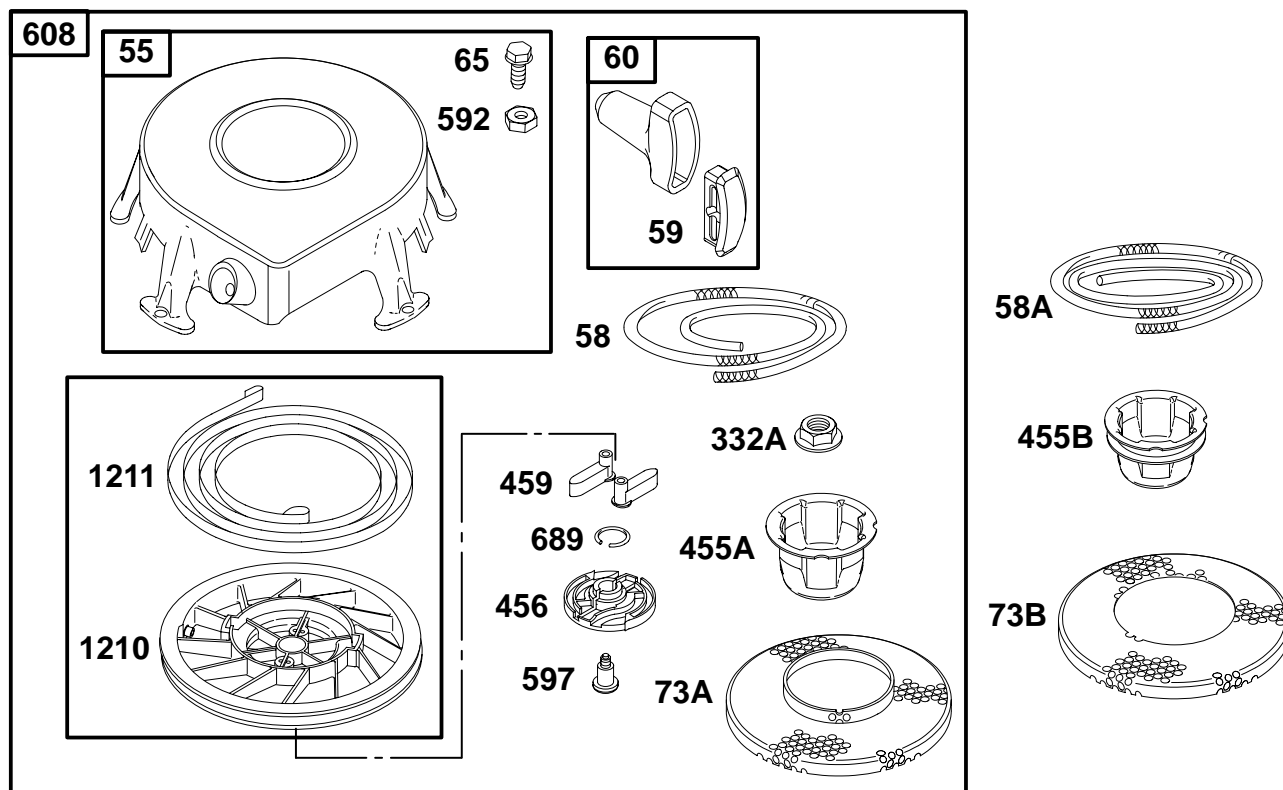


| REF. NO. | PART NO. | DESCRIPTION   | REF. NO. | PART NO. | DESCRIPTION   | REF. NO. | PART NO. | DESCRIPTION   |
|----------|----------|---|----------|----------|---|----------|----------|---|
| 23       | 691354   | Flywheel<br>(Aluminum Ring Gear and Alternator Magnets) | 304      | 496439   | Housing-Blower<br>(Electric Start)<br>———— <b>Note</b> ————<br>496832 Housing-Blower<br>(Rewind Start)<br>Used on Type No(s). 0119, 1015, 1026. | 732      | 691097   | Screw<br>(Starter Drive Cover)  |
| 23A      | 690615   | Flywheel<br>(Standard)                                  | 305      | 94786    | Screw<br>(Blower Housing)   | 1036     | 695697   | Label-Emissions<br>(Used After Code Date 0006300).<br>———— <b>Note</b> ————<br>695096 Label-Emissions<br>(Used After Code Date 99093000 and Before Code Date 00070100).<br>694305 Label-Emissions<br>(Used After Code Date 99100100 and Before Code Date 98123100).<br>499356 Label-Emissions<br>(Used After Code Date 990101). |
| 37       | 690411   | Guard-Flywheel<br>(Electric Start)                      | 332      | 94877    | Nut<br>(Flywheel)   |          |          |   |
| 73       | 224517   | Screen-Rotating<br>(No Collar, Flush)                   | 363      | 19165    | Flywheel Puller   |          |          |   |
| 74       | 94626    | Screw<br>(Rotating Screen)                              | 455      | 691173   | Cup-Flywheel<br>(Straight Side)   |          |          |   |
| 75       | 225136   | Washer<br>(Flywheel)                                    | 726      | 399676   | Gear-Ring<br>(Includes Mounting Parts)  |          |          |   |
| 78       | 690364   | Screw<br>(Flywheel Guard)                               | 727      | 395405   | Cover-Starter Drive   |          |          |   |

★ Included in Engine Gasket Set-Ref. 358.  
● Included in Carburetor Overhaul Kit-Ref. 121.

◆ Included in Carburetor Gasket Set-Ref. 977.  
⊘ Included in Valve Gasket Set-Ref. 1095.

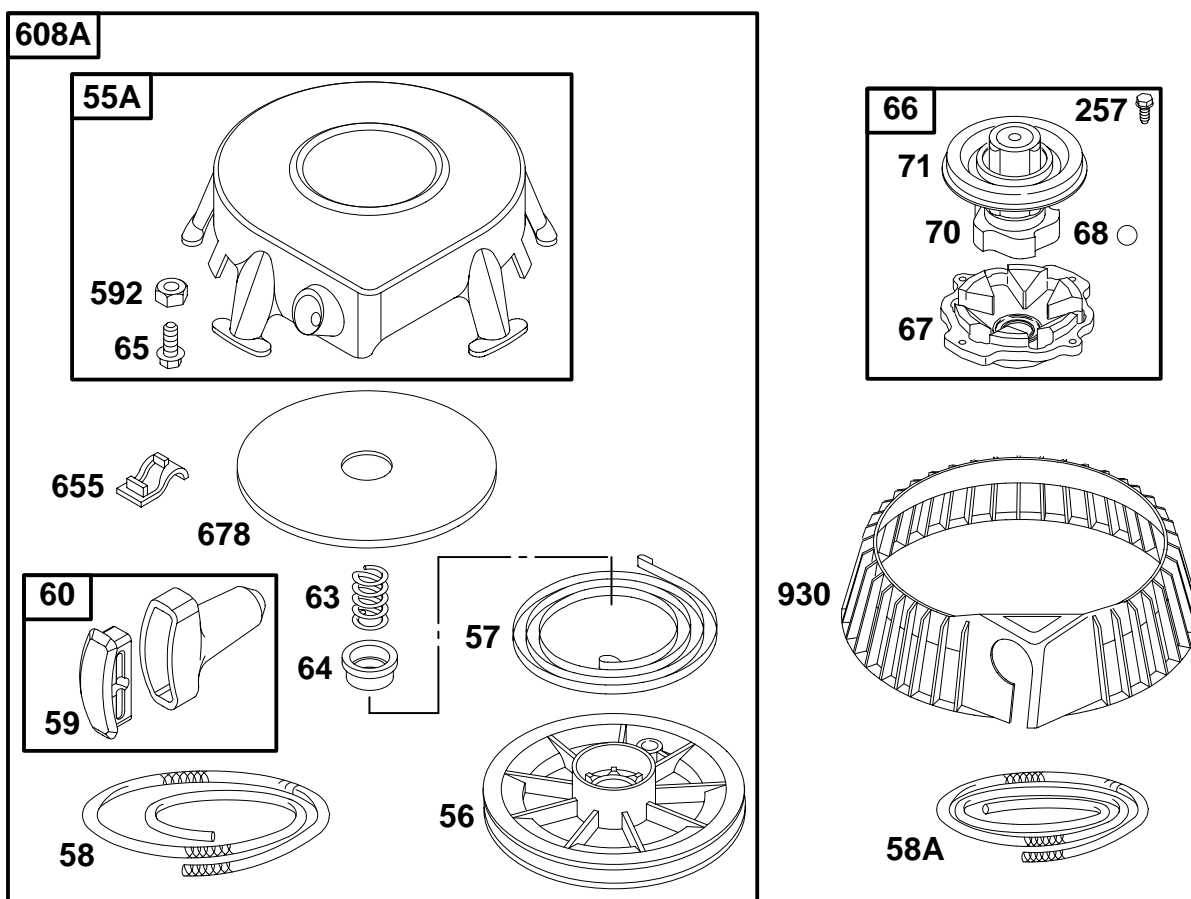
# 197700 to 197799



| REF. NO. | PART NO. | DESCRIPTION  | REF. NO. | PART NO. | DESCRIPTION   | REF. NO. | PART NO. | DESCRIPTION   |
|----------|----------|--|----------|----------|---|----------|----------|---|
| 55       | 693904   | Housing-Rewind Starter<br>(Used After Code Date 98111500). | 73B      | 694020   | Screen-Rotating<br>(Tapered Cup Without Ring) (Used with 99" Rope)                          | 597      | 94943    | Screw<br>(Pawl Friction Plate)  |
| 58       | 66884    | Rope-Starter<br>(63" Cut To Required Length)               | 332A     | 693899   | Nut<br>(Flywheel)   | 608      | 693900   | Starter-Rewind<br>(63" Length Rope)<br>(Used After Code Date 98111500).   |
| 58A      | 66894    | Rope-Starter<br>(99" Cut To Required Length)               | 455A     | 693902   | Cup-Flywheel<br>(Tapered Side With Ring Retainer)   | 689      | 263073   | Spring-Friction   |
| 59       | 490653   | Insert-Grip  | 455B     | 694017   | Cup-Flywheel<br>(Tapered Side With Ring Retainer and Rotating Ring)<br>(Used with 99" Rope) | 1210     | 498144   | Pulley/Spring<br>Assembly<br>(Pulley)<br>(Used After Code Date 98111500). |
| 60       | 490652   | Grip-Starter Rope<br>(2 Piece)                             | 456      | 281503   | Plate-Pawl Friction   | 1211     | 498144   | Pulley/Spring<br>Assembly<br>(Spring)<br>(Used After Code Date 98111500). |
| 65       | 94904    | Screw<br>(Rewind Starter)                                  | 459      | 281505   | Pawl-Ratchet  |          |          |   |
| 73A      | 693905   | Screen-Rotating<br>(Tapered Cup Without Ring)              | 592      | 94908    | Nut<br>(Rewind Starter)   |          |          |   |

★ Included in Engine Gasket Set-Ref. 358.  
● Included in Carburetor Overhaul Kit-Ref. 121.

◆ Included in Carburetor Gasket Set-Ref. 977.  
⊘ Included in Valve Gasket Set-Ref. 1095.

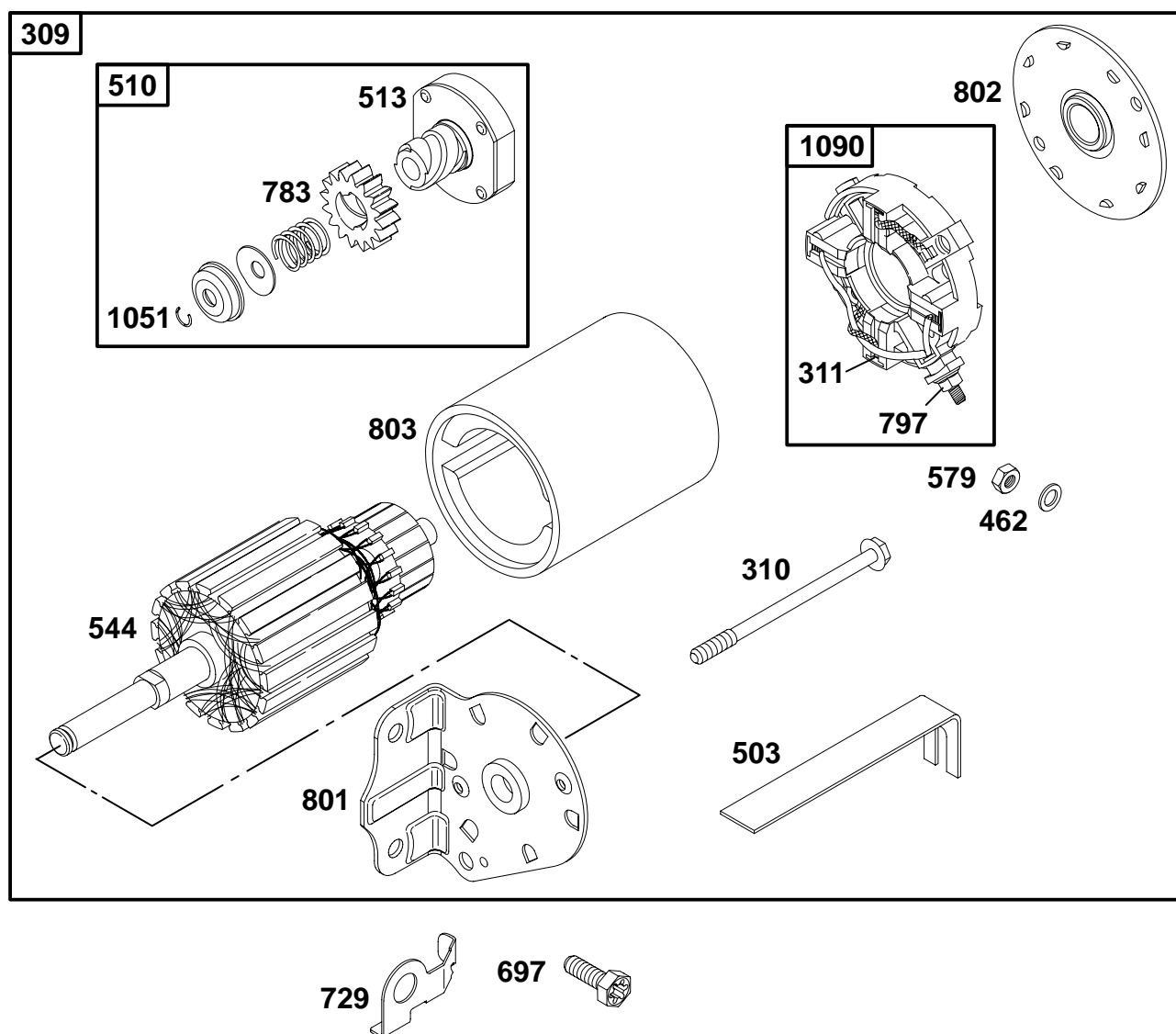


| REF. NO. | PART NO. | DESCRIPTION   | REF. NO. | PART NO. | DESCRIPTION   | REF. NO. | PART NO. | DESCRIPTION   |
|----------|----------|---|----------|----------|---|----------|----------|---|
| 55A      | 393576   | Housing–Rewind Starter<br>(Used Before Code Date 98111600). | 58A      | 66894    | Rope–Starter<br>(99" Cut To Required Length)        | 67       | 394897   | Housing–Clutch                                      |
| 56       | 295871   | Pulley–Starter<br>(Used Before Code Date 98111600).         | 59       | 490653   | Insert–Grip   | 68       | 63770    | Ball–Clutch   |
| 57       | 490179   | Spring–Rewind Starter<br>(Used Before Code Date 98111600).  | 60       | 490652   | Grip–Starter Rope<br>(2 Piece)                      | 70       | 298799   | Ratchet–Clutch                                      |
| 58       | 66884    | Rope–Starter<br>(63" Cut To Required Length)                | 63       | 260414   | Spring–Ratchet                                      | 71       | 691359   | Cover–Ratchet                                       |
|          |          |   | 64       | 281204   | Adapter–Ratchet Spring                              | 257      | 94680    | Screw<br>(Starter Clutch)                           |
|          |          |   | 65       | 94904    | Screw<br>(Rewind Starter)                           | 592      | 94908    | Nut<br>(Rewind Starter)                             |
|          |          |   | 66       | 399671   | Clutch–Starter<br>(Used Before Code Date 99030100). | 608A     | 390391   | Starter–Rewind<br>(Used Before Code Date 98111600). |
|          |          |   |          |          |   | 655      | 222598   | Anchor–Rewind Spring                                |
|          |          |   |          |          |   | 678      | 490817   | Spacer–Rewind                                       |
|          |          |   |          |          |   | 930      | 280685   | Guard–Rewind  |

★ Included in Engine Gasket Set–Ref. 358.  
● Included in Carburetor Overhaul Kit–Ref. 121.

◆ Included in Carburetor Gasket Set–Ref. 977.  
⌀ Included in Valve Gasket Set–Ref. 1095.

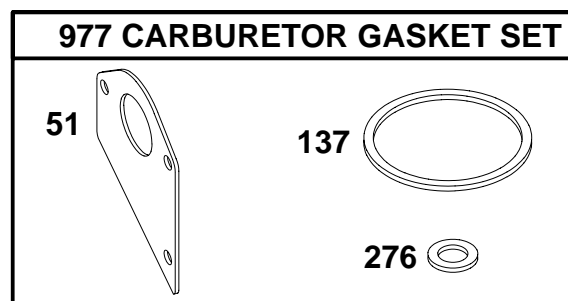
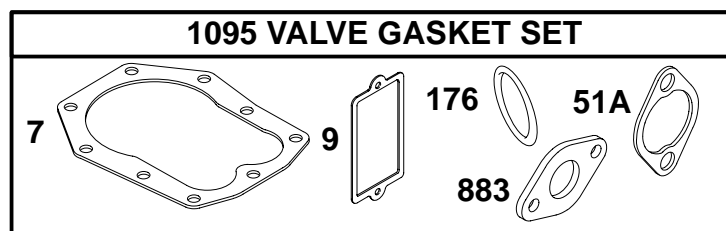
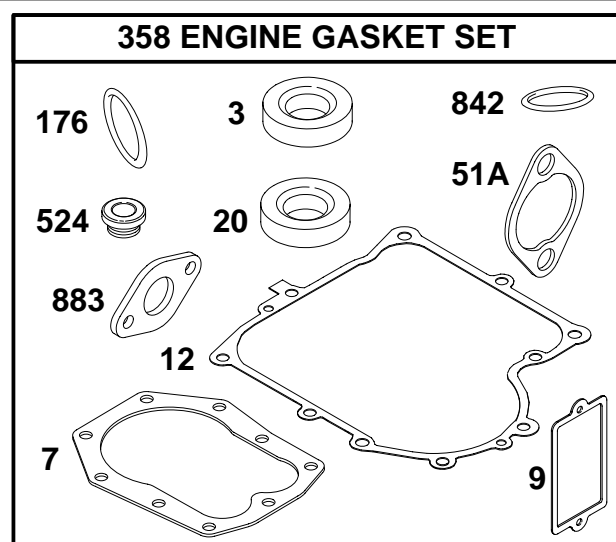
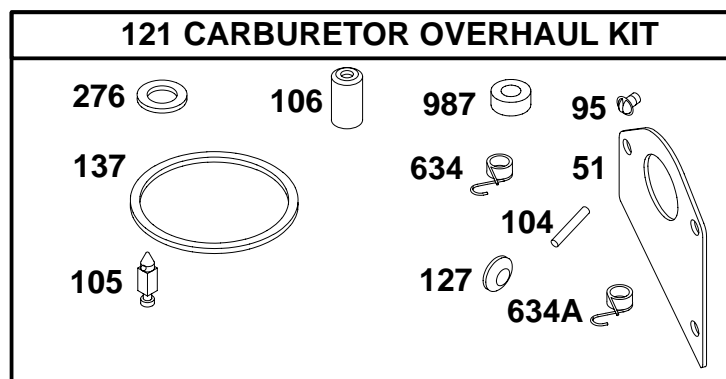
# 197700 to 197799



| REF. NO. | PART NO. | DESCRIPTION            | REF. NO. | PART NO. | DESCRIPTION         | REF. NO. | PART NO. | DESCRIPTION          |
|----------|----------|------------------------|----------|----------|---------------------|----------|----------|----------------------|
| 309      | 693054   | Motor-Starter          | 513      | 398003   | Clutch-Drive        | 797      | 693167   | Nut (Brush Retainer) |
| 310      | 690323   | Bolt (Starter Motor)   | 544      | 497603   | Armature-Starter    | 801      | 394856   | Cap-Drive            |
| 311      | 497608   | Brush Set              | 579      | 92278    | Nut (Starter Cable) | 802      | 497607   | Cap-End              |
| 462      | 225137   | Washer (Starter Cable) | 697      | 690372   | Screw (Drive Cap)   | 803      | 693757   | Housing-Starter      |
| 503      | 691532   | Strap-Starter          | 729      | 691224   | Clip-Wire           | 1051     | 263080   | Ring-Retainer        |
| 510      | 497606   | Drive-Starter          | 783      | 693059   | Gear-Pinion         | 1090     | 497605   | Retainer-Brush       |

★ Included in Engine Gasket Set-Ref. 358.  
● Included in Carburetor Overhaul Kit-Ref. 121.

◆ Included in Carburetor Gasket Set-Ref. 977.  
⊘ Included in Valve Gasket Set-Ref. 1095.



| REF. NO.    | PART NO. | DESCRIPTION                          | REF. NO. | PART NO. | DESCRIPTION                | REF. NO. | PART NO. | DESCRIPTION                       |
|-------------|----------|--------------------------------------|----------|----------|----------------------------|----------|----------|-----------------------------------|
| 3           | ★391086  | Seal—Oil<br>(Magneto Side)           | 20       | ★391086  | Seal—Oil<br>(PTO Side)     | 176      | Ø★281106 | O—Ring Seal<br>(Air Cleaner Base) |
| 7           | Ø★272163 | Gasket—Cylinder Head                 | 51       | ◆★272465 | Gasket—Intake              | 276      | ◆★281164 | Washer—Sealing                    |
| 9           | Ø★27803  | Gasket—Breather                      | 51A      | Ø★272554 | Gasket—Intake              | 358      | 299577   | Gasket Set—Engine                 |
| 12          | ★271701  | Gasket—Crankcase<br>(.015" Standard) | 95       | ◆94098   | Screw<br>(Throttle Valve)  | 524      | ★281370  | Seal—Dipstick Tube                |
| <b>Note</b> |          |                                      | 104      | ◆690525  | Pin—Float Hinge            | 634      | ◆690801  | Spring/Seal Assembly              |
|             | ★27876   | Gasket—Crankcase<br>(.005")          | 105      | ◆231855  | Valve—Float Needle         | 634A     | ◆690802  | Spring/Seal Assembly              |
|             | ★27877   | Gasket—Crankcase<br>(.009")          | 106      | ◆231854  | Seat—Inlet                 | 842      | ★270920  | O—Ring Seal                       |
|             |          |                                      | 121      | 497535   | Kit—Carburetor<br>Overhaul | 883      | Ø★272309 | Gasket—Exhaust                    |
|             |          |                                      | 127      | ◆694530  | Plug—Welch                 | 977      | 494385   | Gasket Set—Carburetor             |
|             |          |                                      | 137      | ◆★281165 | Gasket—Float Bowl          | 987      | ◆691326  | Seal—Throttle Shaft               |
|             |          |                                      |          |          |                            | 1095     | 498536   | Gasket Set—Valve                  |

★ Included in Engine Gasket Set—Ref. 358.  
 ◆ Included in Carburetor Overhaul Kit—Ref. 121.

◆ Included in Carburetor Gasket Set—Ref. 977.  
 Ø Included in Valve Gasket Set—Ref. 1095.