

94200 to 94299

Illustrated Parts List

Model Series

94200 to 94299

TYPE NUMBERS
0104, 0115, 0117,
0118, 0319.

TO FIND THE CORRECT NUMBER OF THE PART YOU NEED: FOLLOW THE INSTRUCTIONS BELOW

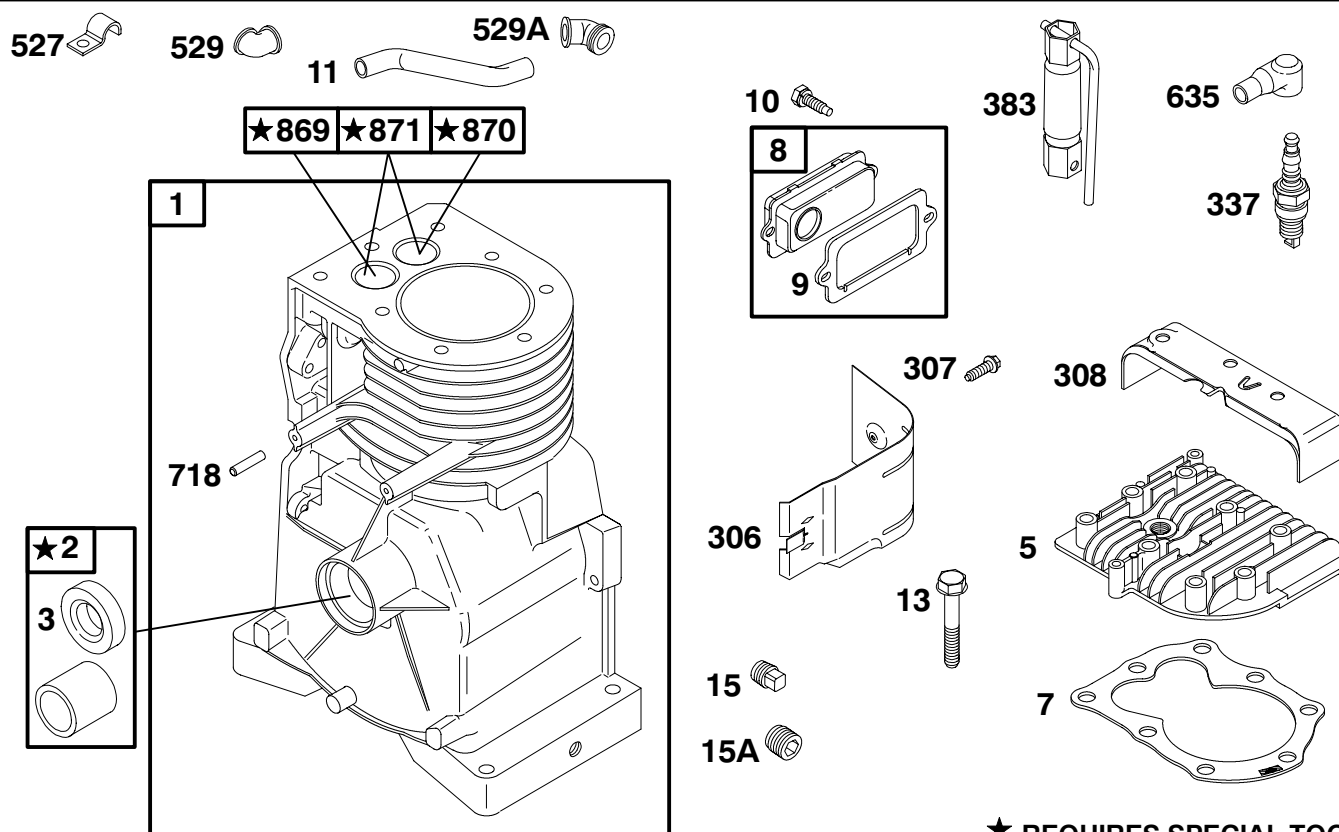
- A. Refer to Engine Model, Type and Code Number that is stamped on the blower housing of engine. Engine type numbers such as 0123 01 are listed only as 0123 in most instances. The two digits (01 or 02, etc.) to the right of the space may be required for more accurate parts identification in some instances. Select the Illustrated Parts List covering the correct Model Series and Type Number.
- B. Refer to the Illustrations and compare the original part with Illustration. The number next to the illustration is the Reference Number. Assemblies include all parts shown in frames. All parts shown in assembly frames having individual reference numbers can be purchased separately.
- C. After the Reference Number has been identified, refer to the Numerical text, where Reference and Primary Part Number are listed. THE PRIMARY PART IS USED ON ALL TYPE NUMBERS EXCEPT THOSE TYPE NUMBERS UNDER "NOTE."
- D. If a "Note" appears below the Primary Part Number, it means that this part differs from the Primary Part for certain types. If your Type number is listed under "Note," order the part referred to at the "Note."
- E. If your Engine Type Number does not appear after any part number listed under "Note," use the Primary Part Number.
- F. For Engine Type Numbers not covered by this book, check other Parts Lists having the same engine model or contact your source of supply.



PRINTED IN U.S.A.

COPYRIGHT by BRIGGS & STRATTON CORPORATION
All rights reserved. No part of this material may be reproduced or transmitted, in any form or by any means, electronic or mechanical, including photocopying, recording or by any information storage and retrieval system, without permission in writing from Briggs & Stratton Corporation.

94200 to 94299



1019 LABEL KIT

1058 OWNER'S MANUAL

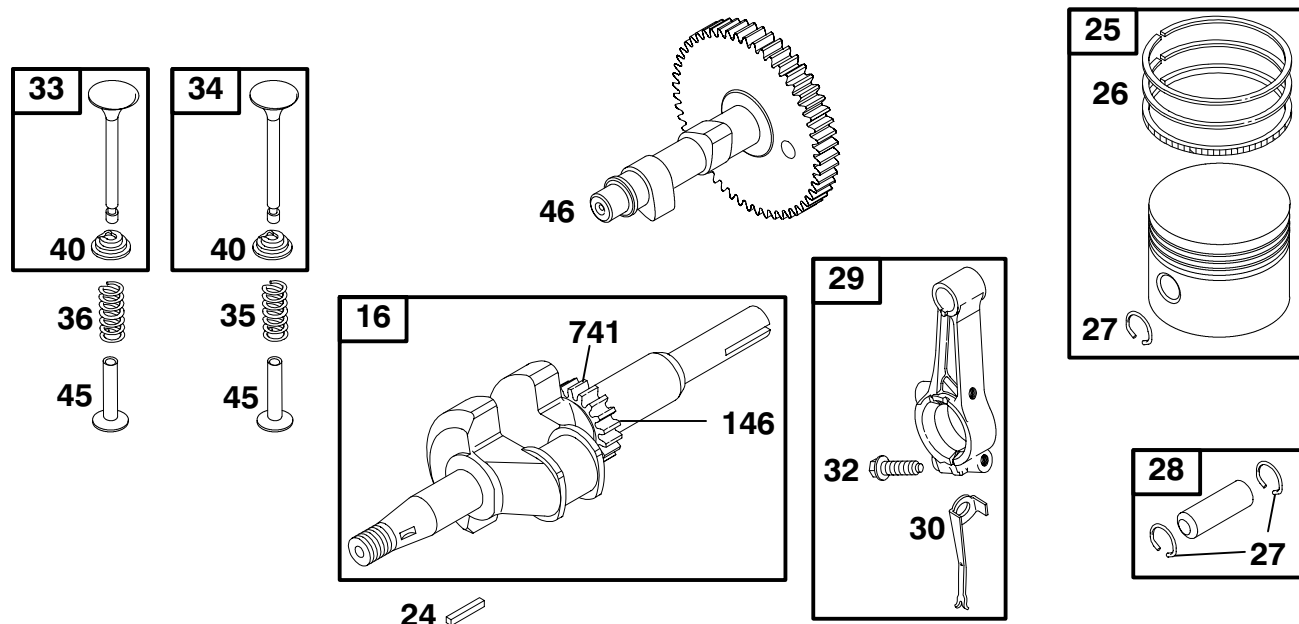
★ **REQUIRES SPECIAL TOOLS TO INSTALL. SEE REPAIR INSTRUCTION MANUAL.**

REF. NO.	PART NO.	DESCRIPTION	REF. NO.	PART NO.	DESCRIPTION	REF. NO.	PART NO.	DESCRIPTION
1	494549	Cylinder Assembly	15	94916	Plug-Oil Drain	869	211172	Seat-Valve (Intake)
2	399269	Kit-Bushing/Seal (Magneto Side)	15A	94886	Plug-Oil Drain	870	211291	Seat-Valve (Exhaust)
3	★299819	Seal-Oil (Magneto Side)	306	690461	Shield-Cylinder	871	262001	Bushing-Valve Guide (Exhaust)
5	690386	Head-Cylinder	307	94680	Screw (Cylinder Shield)	----- Note -----		
7 ★	272694	Gasket-Cylinder Head	308	690462	Cover-Cylinder Head	63709 Bushing-Valve Guide (Intake)		
8	495774	Breather Assembly	337	802592	Sparkplug	1019	491069	Kit-Label
9 ★	27549	Gasket-Breather	383	89838	Wrench-Sparkplug	1058	274260	Manual-Owner's (Emission Engine)
10	691666	Screw (Breather Assembly)	527	223786	Clamp-Tube			
11	231527	Tube-Breather (Cylinder Head)	529	★692189	Grommet			
13	94221	Screw	529A	★66578	Grommet			
			635	66538	Boot-Sparkplug			
			718	230192	Pin-Locating			

★ Included in Engine Gasket Set-Ref. No. 358.

● Included in Carburetor Overhaul Kit-Ref. No. 121.

Included in Valve Gasket Set-Ref. No. 1095.



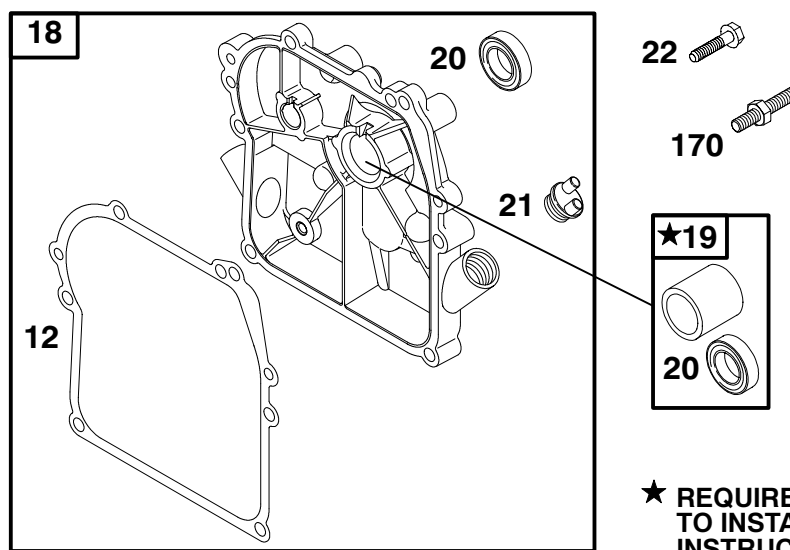
REF. NO.	PART NO.	DESCRIPTION	REF. NO.	PART NO.	DESCRIPTION	REF. NO.	PART NO.	DESCRIPTION
16	492880	Crankshaft ----- Note ----- 691474 Crankshaft Used on Type No(s). 0117. 493632 Crankshaft Used on Type No(s). 0319.	27	26026	Lock-Piston Pin	30	220670	Dipper-Connecting Rod
24	222698	Key-Flywheel	28	298909	Pin-Piston (Standard) ----- Note ----- 298908 Pin-Piston (.005 O.S.)	32	94699	Screw (Connecting Rod)
25	498668	Piston Assembly (Standard) ----- Note ----- 498669 Piston Assembly (.010 O.S.) 498670 Piston Assembly (.020 O.S.) 498671 Piston Assembly (.030 O.S.)	29	294367	Rod-Connecting (Standard) ----- Note ----- 296079 Rod- Connecting (.020 Undersize)	33	296676	Valve-Exhaust
26	498680	Set-Ring (Standard) ----- Note ----- 498681 Set-Ring (.010 O.S.) 498682 Set-Ring (.020 O.S.) 498683 Set-Ring (.030 O.S.)				34	296677	Valve-Intake
						35	260552	Spring-Valve (Intake)
						36	260552	Spring-Valve (Exhaust)
						40	93312	Retainer-Valve
						45	230173	Tappet-Valve
						46	493747	Camshaft
						146	499047	Key-Timing
						741	261533	Gear-Timing

★ Included in Engine Gasket Set-Ref. No. 358.

● Included in Carburetor Overhaul Kit-Ref. No. 121.

Included in Valve Gasket Set-Ref. No. 1095.

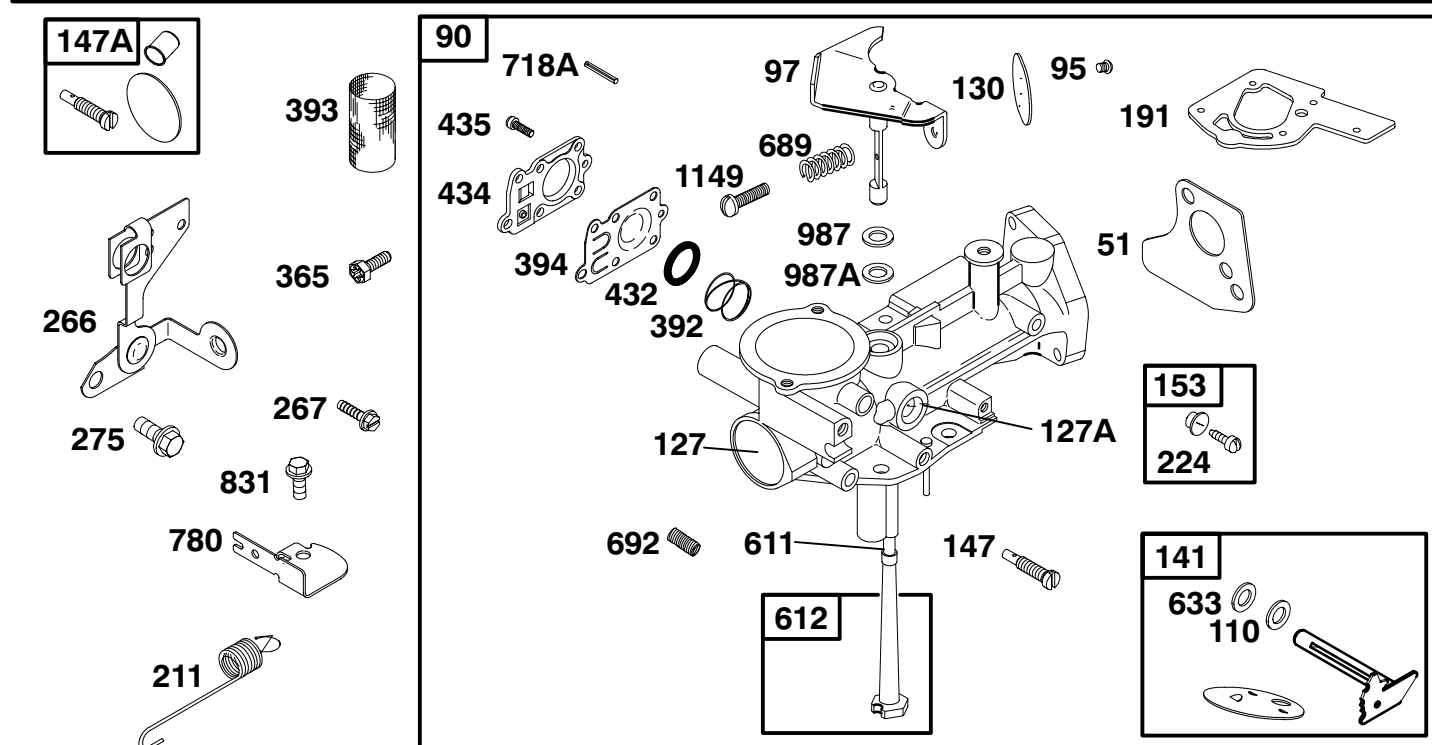
94200 to 94299



REF. NO.	PART NO.	DESCRIPTION	REF. NO.	PART NO.	DESCRIPTION	REF. NO.	PART NO.	DESCRIPTION
12	★270833	Gasket-Crankcase (Standard) (.015 Thick) ----- Note ----- ★270895 Gasket-Crankcase (.005 Thick) ★270896 Gasket-Crankcase (.009 Thick)	18	394820	Cover-Crankcase ----- Note ----- 496679 Cover-Crankcase Used on Type No(s). 0319.	21	281658	Cap-Oil Fill
			19	399269	Kit-Bushing/Seal (PTO Side)	22	691129	Screw (Crankcase Cover) ----- Note ----- 693732 Screw (Crankcase Cover) (Used In Positions 1 and 6) Used on Type No(s). 0319.
			20	★299819	Seal-Oil (PTO Side) ----- Note ----- 495355 Seal-Oil (PTO Side) Used on Type No(s). 0319.	170	691120	Stud (Crankcase Cover) (Used In Position 1)

- ★ Included in Engine Gasket Set-Ref. No. 358.
- Included in Carburetor Overhaul Kit-Ref. No. 121.

Included in Valve Gasket Set-Ref. No. 1095.

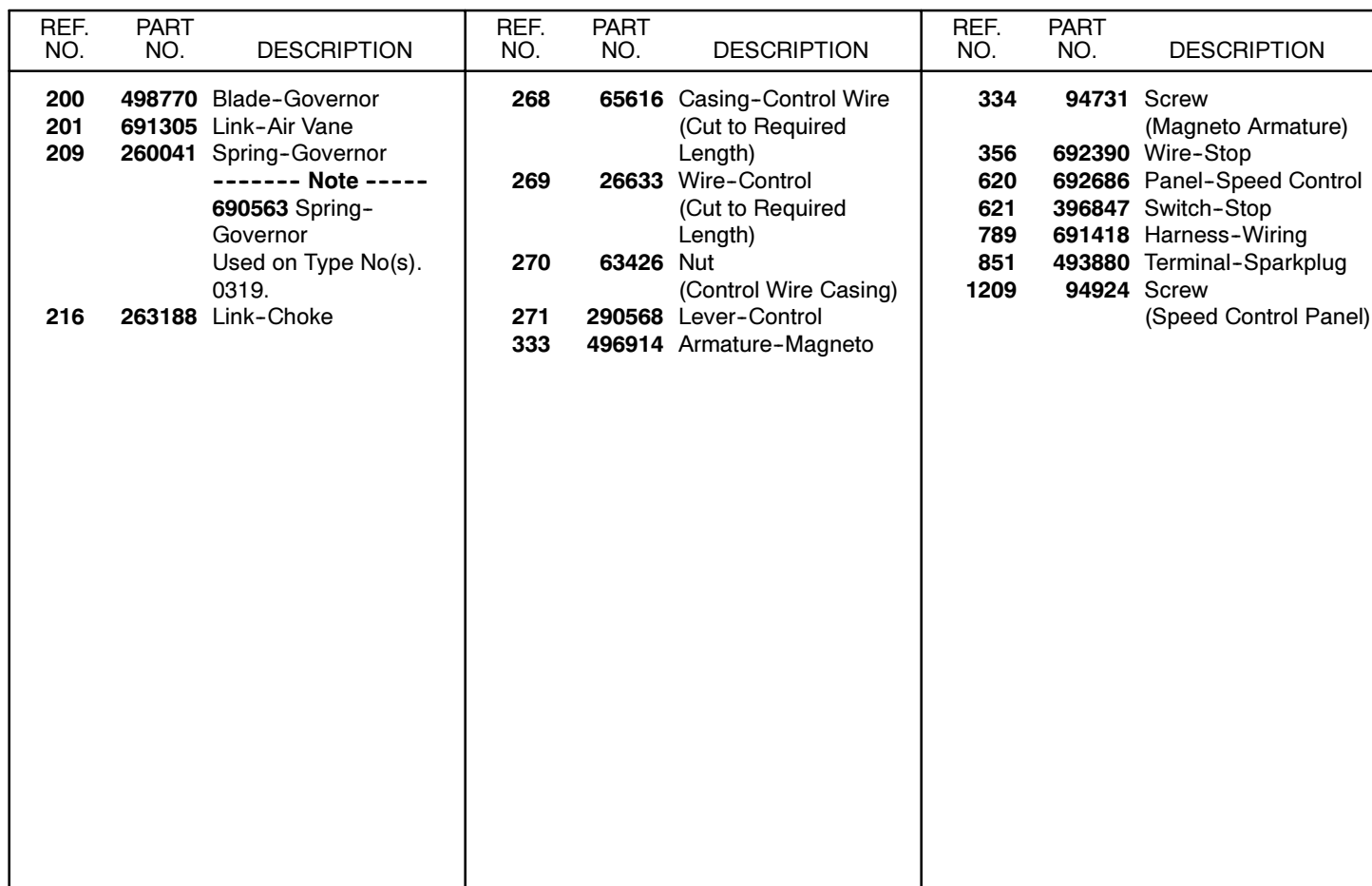


REF. NO.	PART NO.	DESCRIPTION	REF. NO.	PART NO.	DESCRIPTION	REF. NO.	PART NO.	DESCRIPTION
51	★273113	Gasket-Intake	141	497230	Kit-Choke Shaft	432	221377	Cap-Spring
90	499952	Carburetor (Used After Code Date 98082300).	147	691250	Jet-Pilot (Standard)	434	213963	Cover-Diaphragm
		----- Note -----	147A	499502	Jet-Pilot (High Altitude)	435	93141	Screw (Diaphragm Cover)
		499491 Carburetor (Used Before Code Date 98082400).	153	490501	Kit-Collar/Screw	611	690507	Pipe-Fuel
		499492 Carburetor Used on Type No(s). 0319.	191	★272489	Gasket-Fuel Tank	612	391813	Tube-Pickup
		499953 Carburetor Used on Type No(s). 0104.	211	691289	Spring-Governed Idle			----- Note -----
95	93499	Screw (Throttle Valve)	224	690320	Screw (Collar/Screw Kit)	297219		Tube-Pickup Used on Type No(s). 0319.
97	495313	Shaft-Throttle	266	691414	Control-Throttle	633	270382	Seal-Choke/Throttle Shaft
110	690401	Washer (Choke Shaft)	267	691082	Screw (Casing Clamp)	689	260575	Spring-Friction
127	220352	Plug-Welch	275	94897	Screw (Throttle Control)	692	690572	Spring-Detent
127A	223789	Plug-Welch	365	94913	Screw (Carburetor)	718A	690296	Pin-Locating
130	223793	Valve-Throttle	392	262328	Spring-Pump Diaphragm	780	691211	Anchor-Spring
			393	691213	Screen-Carburetor	831	691099	Screw (Spring Anchor)
			394	★272538	Diaphragm-Carburetor	987	271853	Seal-Throttle Shaft
						987A	398970	Seal-Throttle Shaft
						1149	93527	Screw (Idle Speed)

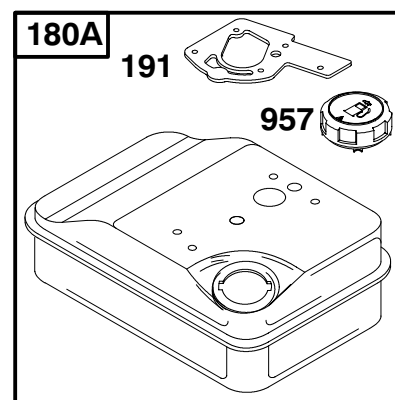
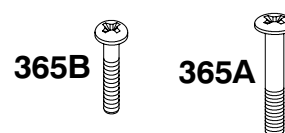
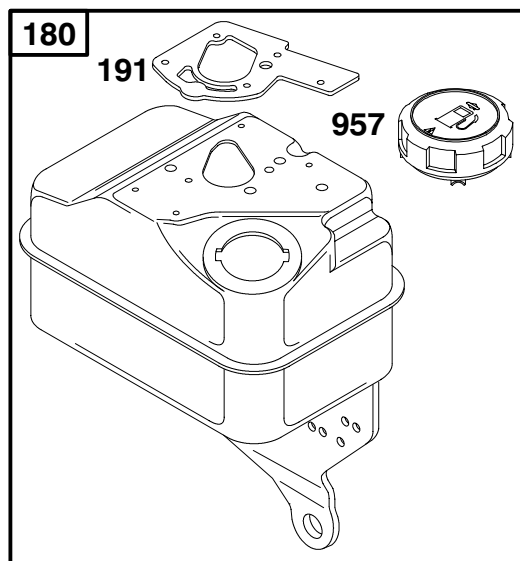
★ Included in Engine Gasket Set-Ref. No. 358.

● Included in Carburetor Overhaul Kit-Ref. No. 121.

Included in Valve Gasket Set-Ref. No. 1095.



Included in Valve Gasket Set-Ref. No. 1095.

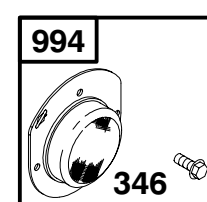
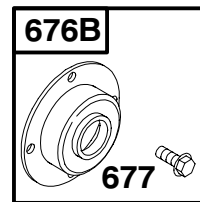
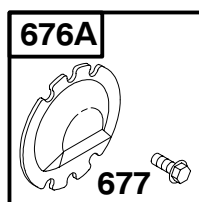
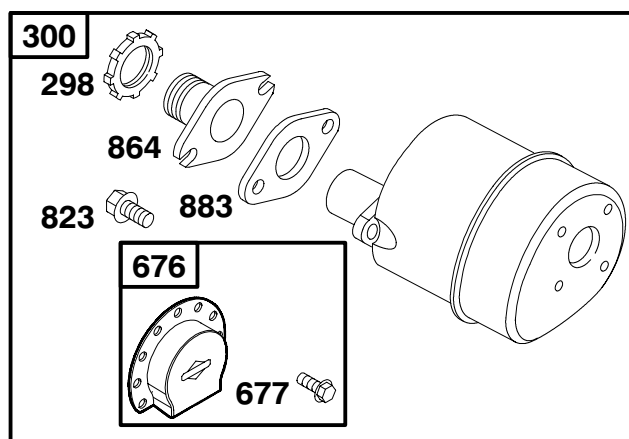
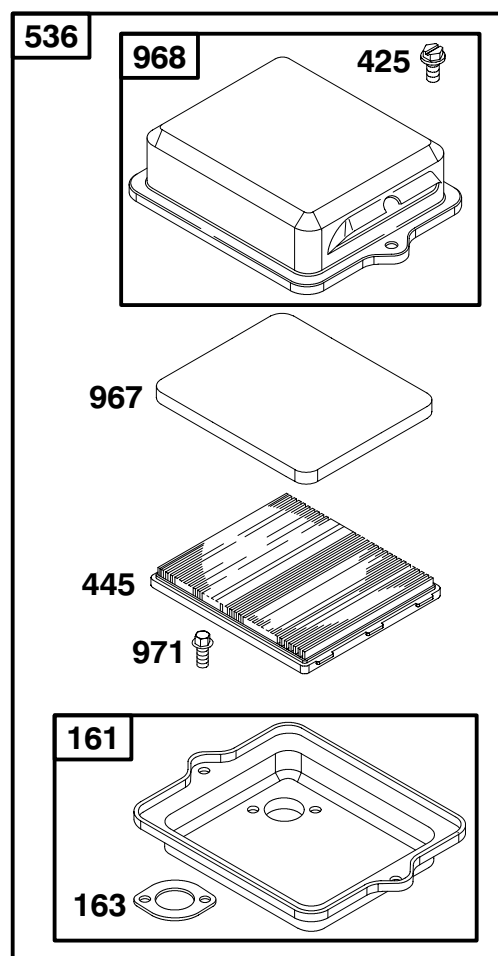


REF. NO.	PART NO.	DESCRIPTION	REF. NO.	PART NO.	DESCRIPTION	REF. NO.	PART NO.	DESCRIPTION
180	495377	Tank-Fuel (2 Quart)	190	94914	Screw (Fuel Tank) (2 Quart)	191	★272489	Gasket-Fuel Tank
		----- Note -----				365A	94919	Screw (Carburetor To Tank) (1 3/4 Long)
	495391	Tank-Fuel (3 Quart)	190A	692200	Screw (Fuel Tank) (3 Quart)	365B	94924	Screw (Carburetor To Tank) (3/4 Long)
180A	495370	Tank-Fuel (1 Quart)	190B	94919	Screw (Fuel Tank) (3 Quart)	957	494559	Cap-Fuel Tank

★ Included in Engine Gasket Set-Ref. No. 358.
● Included in Carburetor Overhaul Kit-Ref. No. 121.

Included in Valve Gasket Set-Ref. No. 1095.

94200 to 94299

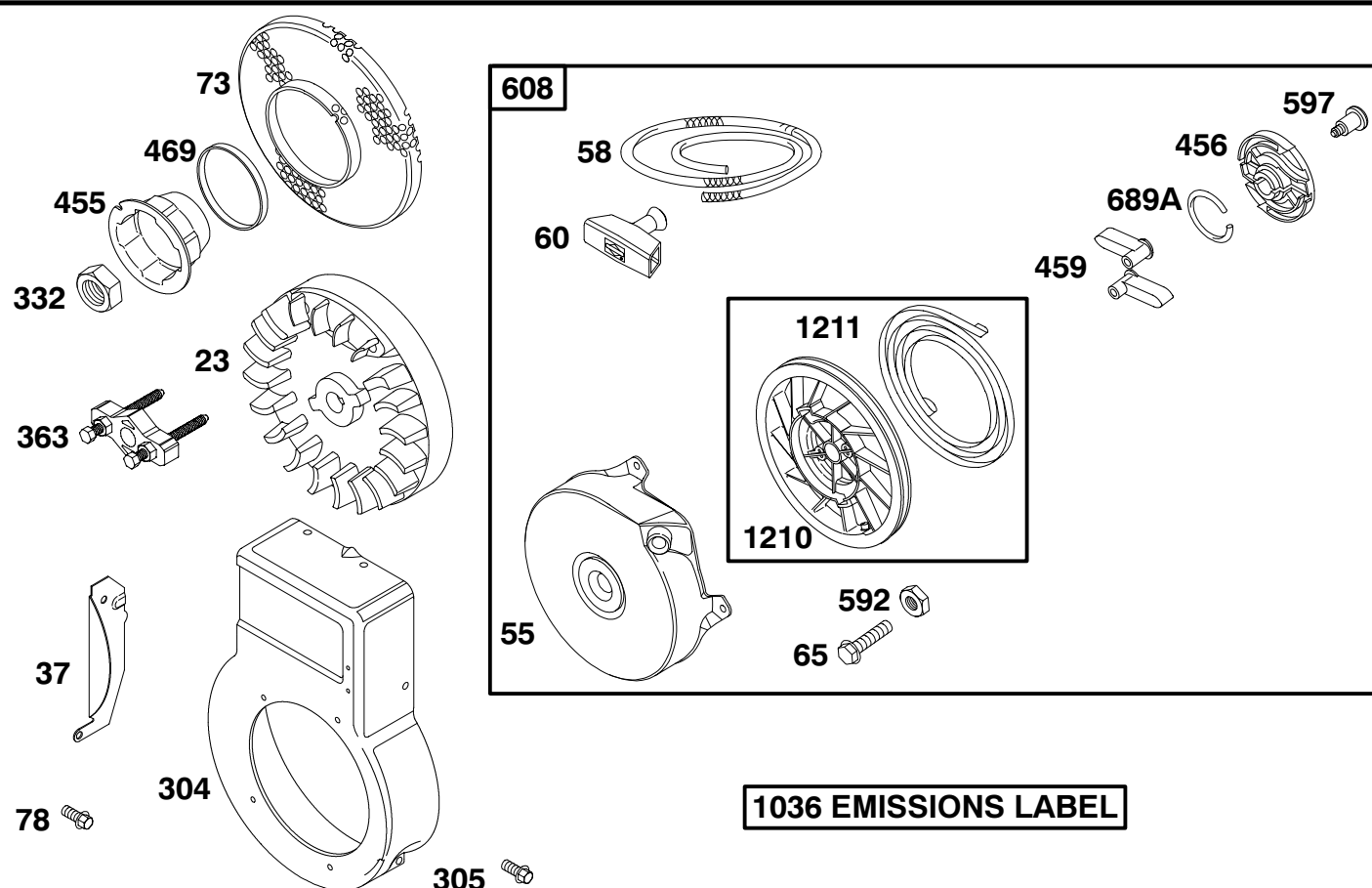


REF. NO.	PART NO.	DESCRIPTION	REF. NO.	PART NO.	DESCRIPTION	REF. NO.	PART NO.	DESCRIPTION
161	492797	Base-Air Cleaner	676	393760	Deflector-Muffler	864	690776	Adapter-Muffler
163 ★	271935	Gasket-Air Cleaner	676A	393756	Deflector-Muffler	883 ★	691314	Gasket-Exhaust
298	220859	Locknut-Muffler/Elbow	676B	397931	Deflector-Muffler	967	491435	Filter-Pre Cleaner
300	493288	Muffler	677	94896	Screw (Muffler Deflector)	968	495872	Cover-Air Cleaner
346	94896	Screw (Spark Arrestor)	823	692336	Screw (Muffler Adapter)	971	690370	Screw (Air Cleaner Base)
425	490073	Screw (Air Cleaner Cover)				994	398067	Arrestor-Spark
445	491588	Filter-Air Cleaner Cartridge						
536	494279	Cleaner-Air						

★ Included in Engine Gasket Set-Ref. No. 358.

● Included in Carburetor Overhaul Kit-Ref. No. 121.

Included in Valve Gasket Set-Ref. No. 1095.



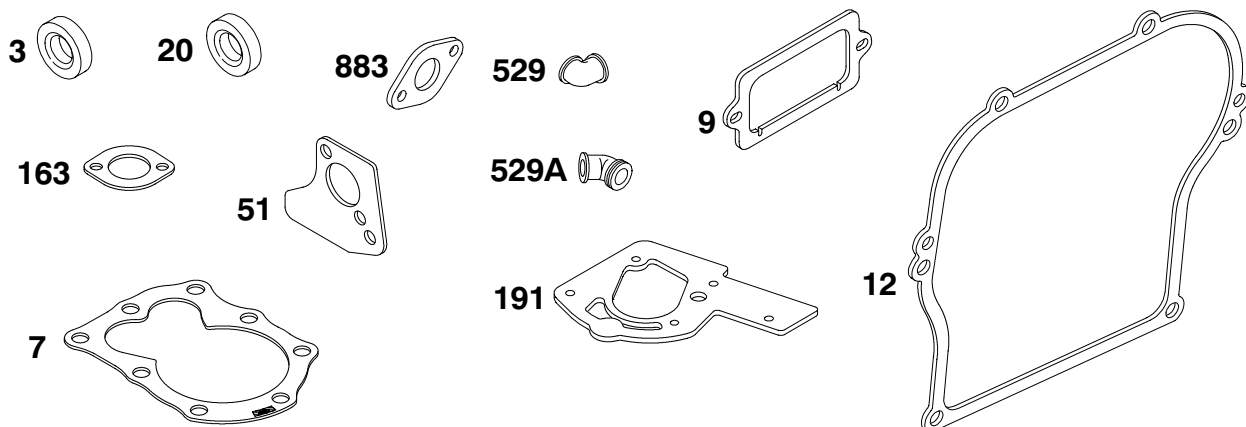
REF. NO.	PART NO.	DESCRIPTION	REF. NO.	PART NO.	DESCRIPTION	REF. NO.	PART NO.	DESCRIPTION
23	690843	Flywheel ----- Note ----- 496893 Flywheel Used on Type No(s). 0117.	304	693004	Housing-Blower	1036	695097	Label-Emission (Used After Code Date 99093000).
37	690463	Guard-Flywheel	305	94786	Screw (Blower Housing)			----- Note ----- 694421 Label-Emission (Used Before Code Date 99400400 and After Code Date 98123100).
55	692144	Housing-Rewind Starter	332	94877	Nut (Flywheel)			499329 Label-Emissions (Used Before Code Date 99010100).
58	281464	Rope-Starter	363	19069	Puller-Flywheel	1210	499901	Pulley/Spring Assembly (Pulley)
60	281101	Grip-Starter Rope	455	691236	Cup-Flywheel	1211	499901	Pulley/Spring Assembly (Spring)
65	94904	Screw (Rewind Starter)	456	281503	Plate-Pawl Friction			
73	694018	Screen-Rotating	459	281505	Pawl-Ratchet			
78	690364	Screw (Flywheel Guard)	469	694420	Ring-Rotating Trim			
			592	94908	Nut (Rewind Starter)			
			597	94943	Screw (Pawl Friction Plate)			
			608	499706	Starter-Rewind			
			689A	263073	Spring-Friction			

- ★ Included in Engine Gasket Set-Ref. No. 358.
- Included in Carburetor Overhaul Kit-Ref. No. 121.

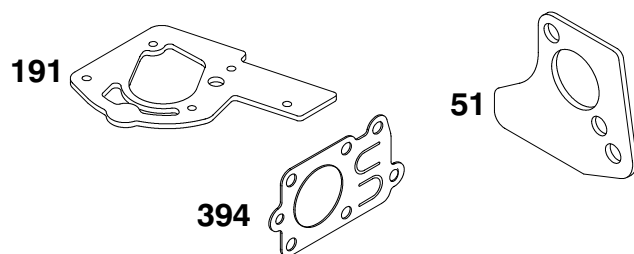
Included in Valve Gasket Set-Ref. No. 1095.

94200 to 94299

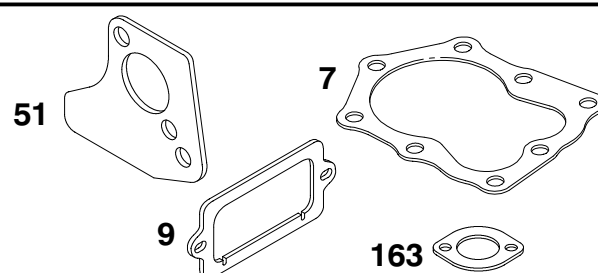
358 ENGINE GASKET SET



121 CARBURETOR OVERHAUL KIT



1095 VALVE GASKET SET



REF. NO.	PART NO.	DESCRIPTION	REF. NO.	PART NO.	DESCRIPTION	REF. NO.	PART NO.	DESCRIPTION
3	★299819	Seal-Oil (Magneto Side)	20	★299819	Seal-Oil (PTO Side)	394	●272538	Diaphragm-Carburetor
7	★ 272694	Gasket-Cylinder Head	51★	●273113	Gasket-Intake	529	★692189	Grommet
9	★ 27549	Gasket-Breather	121	495606	Overhaul Kit-Carburetor	529A	★66578	Grommet
12	★270833	Gasket-Crankcase (Standard) (.015 Thick)	163★	271935	Gasket-Air Cleaner	883	★691314	Gasket-Exhaust
----- Note -----			191	●★272489	Gasket-Fuel Tank	1095	692638	Gasket Set-Valve
		★270895 Gasket-Crankcase (.005 Thick)	358	495605	Gasket Set-Engine			
		★270896 Gasket-Crankcase (.009 Thick)						

★ Included in Engine Gasket Set-Ref. No. 358.
 ● Included in Carburetor Overhaul Kit-Ref. No. 121.

Included in Valve Gasket Set-Ref. No. 1095.