

133400 to 133499

Illustrated Parts List

Model Series

133400 to 133499

TYPE NUMBERS
0001 through 0013,
0024, 0025, 0026,
0030 through 0039,
0040 through 0049,
0050, 0051, 0059,
0060,
0070 through 0085,
0101 through 0117,
0131, 0132, 0133,

TYPE NUMBERS
0310, 0324, 0335,
0336, 0338, 0340,
0349, 0350, 0359,
0360, 0511, 0513,
0536, 0555, 0571,
0573, 0574, 1010,
1011 through 1094,
1112, 1113, 1115,
1117, 1118, 1120,
1132, 1171, 1172,
1173, 1174, 1175,
1176, 1177, 2011.

TO FIND

THE CORRECT NUMBER OF THE PART YOU NEED: FOLLOW THE INSTRUCTIONS BELOW

- A. Refer to Engine Model, Type and Code Number that is stamped on the blower housing of engine. Engine type numbers such as 0123 01 are listed only as 0123 in most instances. The two digits (01 or 02, etc.) to the right of the space may be required for more accurate parts identification in some instances. Select the Illustrated Parts List covering the correct Model Series and Type Number.
- B. Refer to the Illustrations and compare the original part with Illustration. The number next to the illustration is the Reference Number. Assemblies include all parts shown in frames. All parts shown in assembly frames having individual reference numbers can be purchased separately.
- C. After the Reference Number has been identified, refer to the Numerical text, where Reference and Primary Part Number are listed. **THE PRIMARY PART IS USED ON ALL TYPE NUMBERS EXCEPT THOSE TYPE NUMBERS UNDER "NOTE."**
- D. If a "Note" appears below the Primary Part Number, it means that this part differs from the Primary Part for certain types. If your Type number is listed under "Note," order the part referred to at the "Note."
- E. If your Engine Type Number does not appear after any part number listed under "Note," use the Primary Part Number.
- F. For Engine Type Numbers not covered by this book, check other Parts Lists having the same engine model or contact your source of supply.

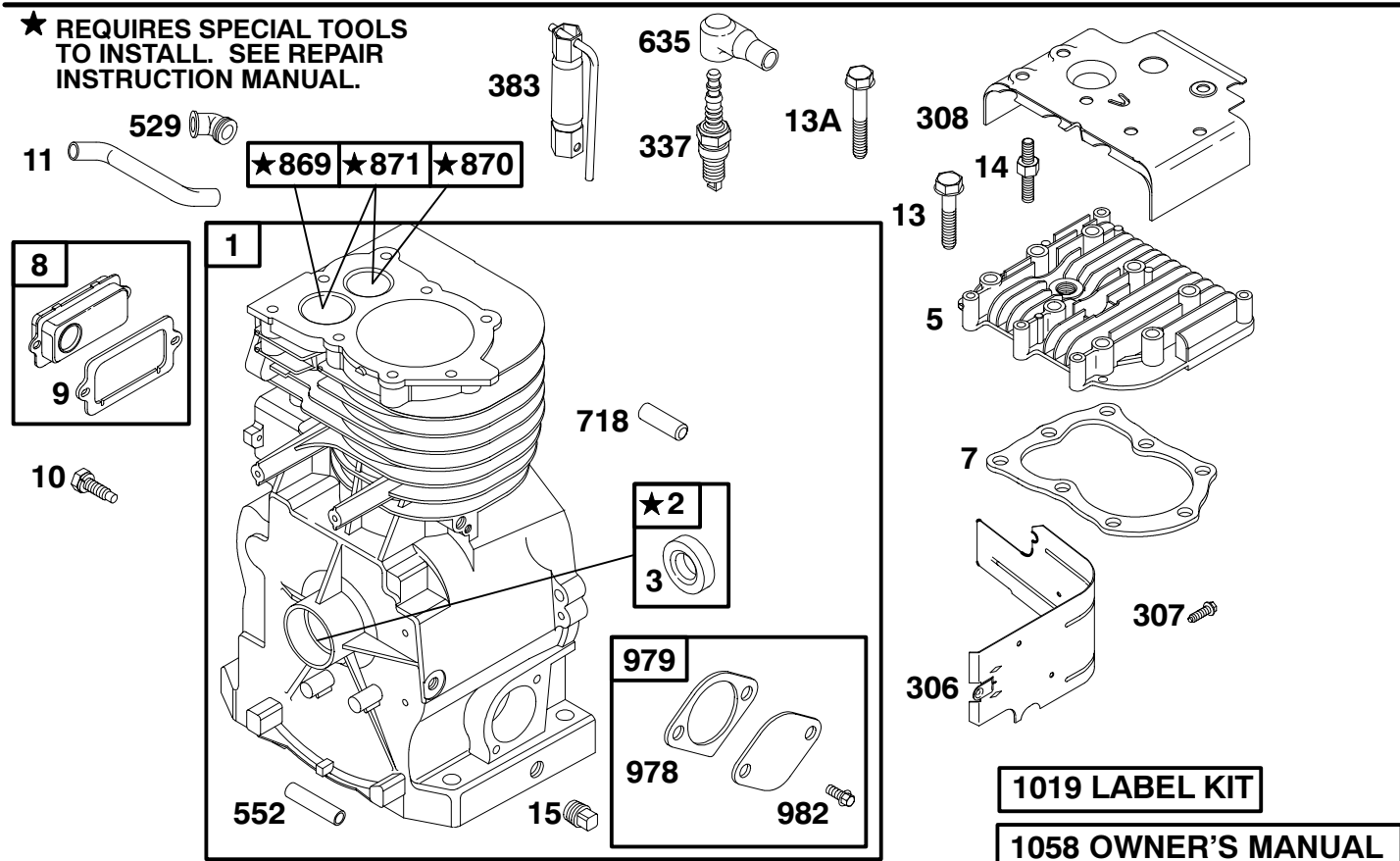
PRINTED IN U.S.A.



COPYRIGHT by BRIGGS & STRATTON CORPORATION
All rights reserved. No part of this material may be reproduced or transmitted, in any form or by any means, electronic or mechanical, including photocopying, recording or by any information storage and retrieval system, without permission in writing from Briggs & Stratton Corporation.

133400 to 133499

★ REQUIRES SPECIAL TOOLS TO INSTALL. SEE REPAIR INSTRUCTION MANUAL.



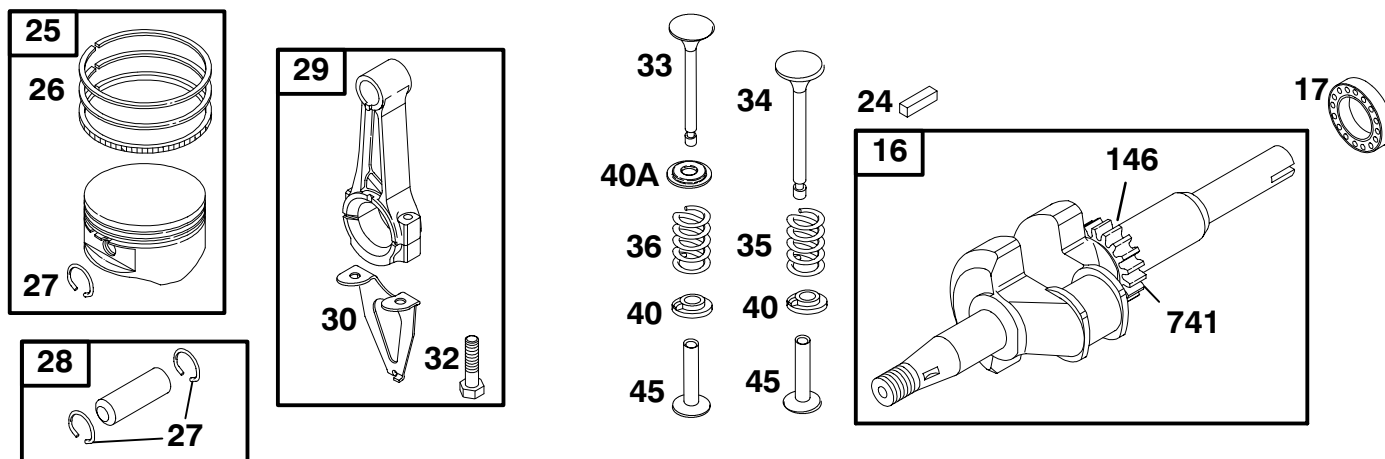
1019 LABEL KIT

1058 OWNER'S MANUAL

REF. NO.	PART NO.	DESCRIPTION	REF. NO.	PART NO.	DESCRIPTION	REF. NO.	PART NO.	DESCRIPTION
1	495133	Cylinder Assembly	15	94916	Plug-Oil Drain (Square Head)	871	262001	Bushing-Valve Guide (Exhaust Valve)
2	399268	Kit-Bushing/Seal (Magneto Side)			----- Note -----			----- Note -----
3	★299819	Seal-Oil (Magneto Side)			94687 Plug-Oil Drain (Magnetic)			63709 Bushing-Valve Guide (Intake Valve)
5	214040	Head-Cylinder	306	690483	Shield-Cylinder	978	★273326	Gasket-Oil Gard
7	★272157	Gasket-Cylinder Head	307	94680	Screw (Cylinder Shield)	979	691382	Cover-Oil Gard
8	495774	Breather Assembly	308	690473	Cover-Cylinder Head	982	690351	Screw (Oil Gard Cover)
9	★27549	Gasket-Breather	337	802592	Sparkplug (Resistor Type)	1019	495861	Kit-Label
10	691666	Screw (Breather Assembly)	383	89838	Wrench-Sparkplug	1058	274875	Owner's Manual (Emission Engines)
11	691246	Tube-Breather	529	66578	Grommet			----- Note -----
13	94221	Screw (Cylinder Head)	552	690508	Bushing-Governor Crank			272528 Owner's Manual (Non Emission Engines)
13A	94679	Screw (Cylinder Head) (Long Bolt)	635	66538	Boot-Sparkplug			
			718	230192	Pin-Locating			
14	690368	Stud (Cylinder Head)	869	211787	Seat-Valve (Intake)			
			870	263094	Seat-Valve (Exhaust-Cobalite)			

★ Included in Engine Gasket Set-See Ref. 358.
 ● Included in Carburetor Overhaul Kit-See Ref.121.

◆ Included in Valve Gasket Set-See Ref. 1095.
 ♦ Included in Carburetor Gasket Set-See Ref. 977.

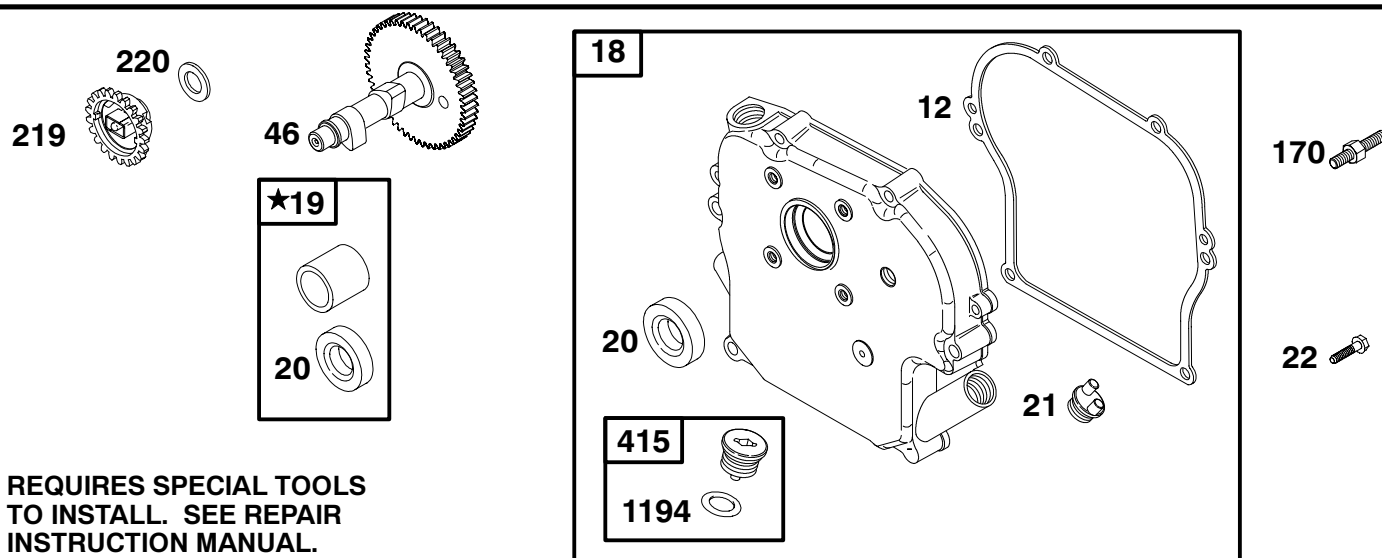


REF. NO.	PART NO.	DESCRIPTION	REF. NO.	PART NO.	DESCRIPTION	REF. NO.	PART NO.	DESCRIPTION		
16	495645	Crankshaft ----- Note ----- 397095 Crankshaft Used On Type No(s). 0024, 0049, 0324, 0349, 1024, 1049, 1177. 397103 Crankshaft Used on Type No(s). 0011, 0511, 1011. 492088 Crankshaft Used On Type No(s). 0083, 0084, 0555, 1084. 494035 Crankshaft Used On Type No(s). 0039, 0040, 0070, 0340, 0571, 1040, 1070, 1171. 495642 Crankshaft Used On Type No(s). 0071, 0072, 1071, 1072. 495643 Crankshaft Used On Type No(s). 0010, 0025, 0026, 0038, 0051, 0111, 0115, 0310, 0338, 1010, 1025, 1038, 1115, 1175. 495644 Crankshaft Used On Type No(s). 0035, 0112, 0335, 1035, 1118, 1132.								
				495649	Crankshaft Used On Type No(s). 0030, 0060, 0080, 0360, 1030, 1060. 499764 Crankshaft Used On Type No(s). 0059, 0085, 0359, 1059.					
			17	494874	Bearing-Ball			29	299430	Rod-Connecting ----- Note ----- 390459 Rod-Connecting (.020" Undersize)
			24	222698	Key-Flywheel			30	225183	Dipper-Connecting Rod
			25	393819	Piston Assembly (Standard) ----- Note ----- 393820 Piston Assembly (.010" O.S.) 393821 Piston Assembly (.020" O.S.) 393822 Piston Assembly (.030" O.S.)			32	94699	Screw (Connecting Rod)
								33	211119	Exhaust Valve
			26	399067	Ring Set (Standard) ----- Note ----- 399014 Ring Set (.010" O.S.) 399015 Ring Set (.020" O.S.) 399016 Ring Set (.030" O.S.)			34	261044	Valve-Intake
								35	260552	Spring-Valve (Intake)
								36	26478	Spring-Valve (Exhaust)
								40	93312	Retainer-Valve
								40A	225257	Retainer-Valve
								45	260642	Tappet-Valve
								146	94388	Key-Timing (Used with Timing Gear 262992) ----- Note ----- 230978 Key-Timing (Used with Timing Gear 261696)
			27	26026	Lock-Piston Pin			741	262992	Gear-Timing (Uses Woodruff Key) ----- Note ----- 261696 Timing Gear (Uses Locating Pin)
			28	298909	Pin-Piston (Standard) ----- Note ----- 298908 Pin-Piston (.005" O.S.)					

★ Included in Engine Gasket Set-See Ref. 358.
● Included in Carburetor Overhaul Kit-See Ref.121.

◆ Included in Valve Gasket Set-See Ref. 1095.
◆ Included in Carburetor Gasket Set-See Ref. 977.

133400 to 133499

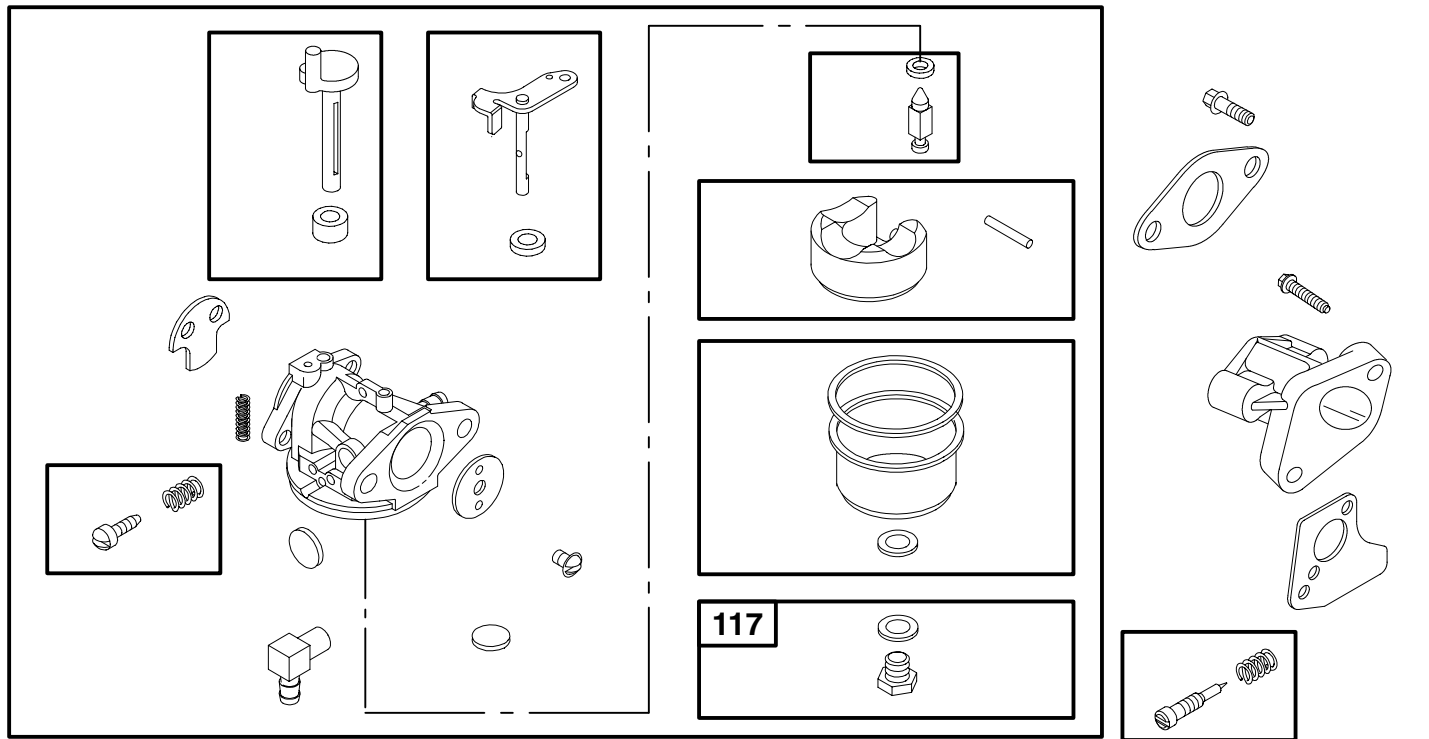


★ **REQUIRES SPECIAL TOOLS TO INSTALL. SEE REPAIR INSTRUCTION MANUAL.**

REF. NO.	PART NO.	DESCRIPTION	REF. NO.	PART NO.	DESCRIPTION	REF. NO.	PART NO.	DESCRIPTION
12	★270080	Gasket-Crankcase (.015" Thick, Standard) ----- Note ----- ★270125 Gasket-Crankcase (.005" Thick) ★270126 Gasket-Crankcase (.009" Thick)						
18	694319	Cover-Crankcase (Used After Code Date 99031400). Used On Model(s) 133432, 133437 ----- Note ----- 495641 Cover-Crankcase (Used Before Code Date 99031500). Used On Model(s) 133432, 133437		694375	Cover-Crankcase (Used After Code Date 99031400). Used On Type No(s). 0084, 1084.			495330 Seal-Oil (PTO Side) Used On Type No(s). 0039, 0040, 0070, 0340, 0571, 1040, 1070, 1171.
		694377 Cover-Crankcase (Used After Code Date 99031400). Used On Model(s) 133412, 133452	19	495660	Kit-Bushing/Seal	21	281658	Cap-Oil Fill
		493916 Cover-Crankcase (Used Before Code Date 99031500). Used On Model(s) 133412, 133452	20	★495307	Seal-Oil (PTO Side) ----- Note ----- 294606 Seal-Oil (PTO Side) Used On Type No(s). 0011, 0083, 0084, 0511, 0555, 1011, 1084.	22	94682	Screw (Crankcase Cover)
					391484 Seal-Oil (PTO Side) Used on Type No(s). 0084, 1084.	46	691164	Camshaft ----- Note ----- 212733 Camshaft (Used Before Code Date 96112500). 692526 Camshaft (Used On Type No(s). 0084, 1084.
						170	691120	Stud (Crankcase Cover) Used On Type No(s). 0083.
						219	494845	Gear-Governor
						220	221551	Washer (Governor Gear)
						415	691363	Plug (High Oil Fill Hole)
						1194	★271485	O-Ring Seal (Plug)

★ Included in Engine Gasket Set-See Ref. 358.
● Included in Carburetor Overhaul Kit-See Ref.121.

◆ Included in Valve Gasket Set-See Ref. 1095.
◆ Included in Carburetor Gasket Set-See Ref. 977.

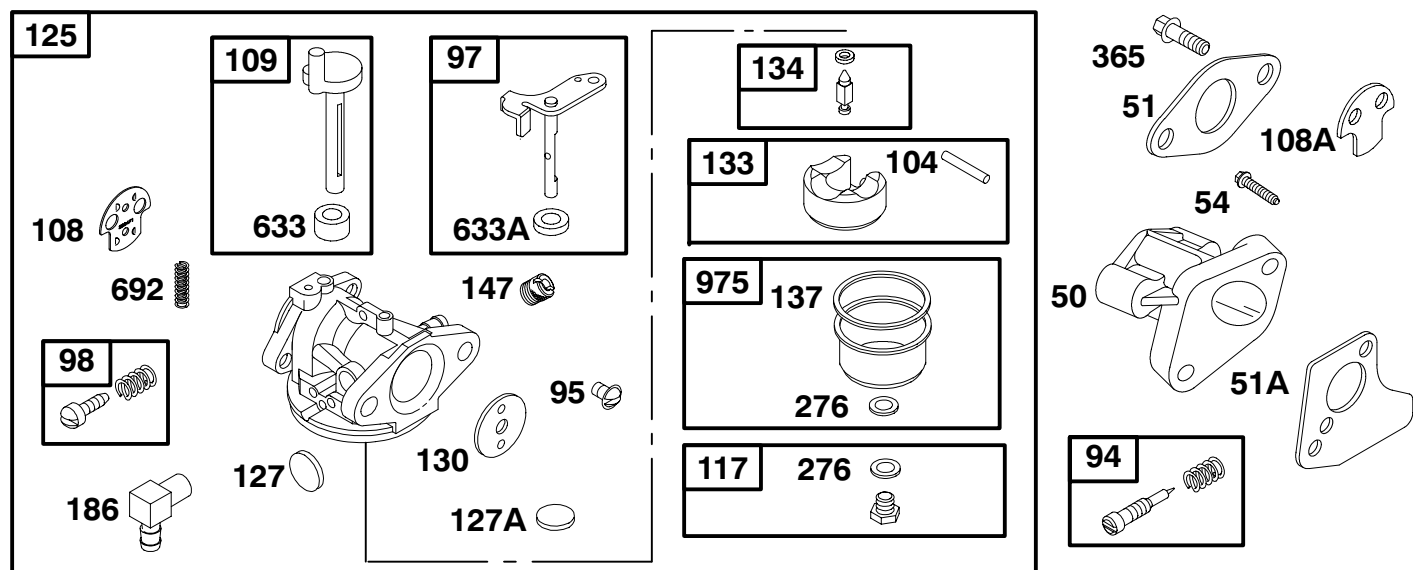


REF. NO.	PART NO.	DESCRIPTION	REF. NO.	PART NO.	DESCRIPTION	REF. NO.	PART NO.	DESCRIPTION
117	690048	Jet-Main ----- Note ----- 497434 Jet-Main (Standard) Used On Type No(s). 0001, 0002, 0003, 0004, 0006, 0007, 0008, 0009, 0010, 0011, 0013, 0024, 0025, 0026, 0030, 0035, 0036, 0038, 0039, 0040, 0041, 0042, 0043, 0049, 0050, 0051, 0059, 0060, 0070, 0071, 0072, 0080, 0082, 0083, 0084, 0085, 0101, 0111, 0112, 0113, 0115, 0117.		493869	Jet-Main (High Altitude)		495981	Jet-Main (High Altitude) Used On Type No(s). 0001, 0002, 0003, 0004, 0006, 0007, 0008, 0009, 0010, 0011, 0013, 0024, 0025, 0026, 0030, 0035, 0036, 0038, 0039, 0040, 0041, 0042, 0043, 0049, 0050, 0051, 0059, 0060, 0070, 0071, 0072, 0080, 0082, 0083, 0084, 0085, 0101, 0111, 0112, 0113, 0115, 0117.

★ Included in Engine Gasket Set-See Ref. 358.
 ● Included in Carburetor Overhaul Kit-See Ref.121.

◆ Included in Valve Gasket Set-See Ref. 1095.
 ♦ Included in Carburetor Gasket Set-See Ref. 977.

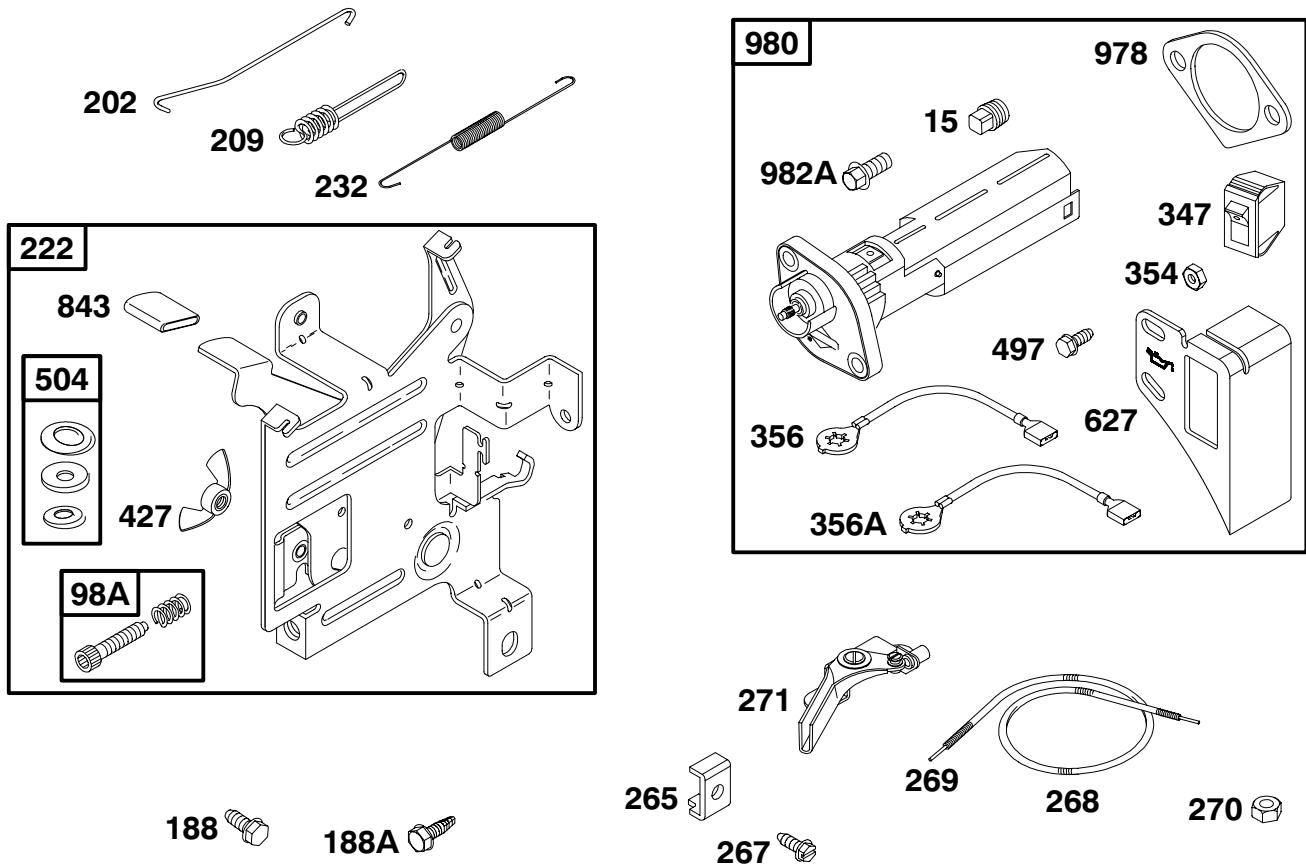
133400 to 133499



REF. NO.	PART NO.	DESCRIPTION	REF. NO.	PART NO.	DESCRIPTION	REF. NO.	PART NO.	DESCRIPTION
50	281247	Manifold-Intake	109	498593	Shaft-Choke	125	498599	Carburetor
51	★272295	Gasket-Intake			----- Note -----			----- Note -----
51A	★273113	Gasket-Intake			495651 Shaft-Choke			495652 Carburetor
54	94923	Screw (Intake Manifold)			Used On Type No(s).			Used On Type No(s).
94	●493765	Kit-Idle Mixture			0001, 0002, 0003,			0001, 0002, 0003,
95	94098	Screw (Throttle Valve)			0004, 0006, 0007,			0004, 0006, 0007,
97	493556	Shaft-Throttle			0008, 0009, 0010,			0008, 0009, 0010,
98	398185	Kit-Idle Speed			0011, 0013, 0024,			0011, 0013, 0024,
104	●691242	Pin-Float Hinge			0025, 0026, 0030,			0025, 0026, 0030,
108	691182	Valve-Choke			0035, 0036, 0038,			0035, 0036, 0038,
108A	224783	Valve-Choke Used On Type No(s).			0039, 0040, 0041,			0039, 0040, 0041,
					0042, 0043, 0049,			0042, 0043, 0049,
					0050, 0051, 0059,			0050, 0051, 0059,
					0060, 0070, 0071,			0060, 0070, 0071,
					0072, 0080, 0082,			0072, 0080, 0082,
					0083, 0084, 0085,			0083, 0084, 0085,
					0101, 0111, 0112,			0101, 0111, 0112,
					0113, 0115, 0117.			0113, 0115, 0117.
			117		Jet-Main			
					See Previous Page			
						127	●223472	Plug-Welch
						127A	●694468	Plug-Welch
						130	691181	Valve-Throttle
						133	398187	Float-Carburetor
						134	●398188	Kit-Needle/Seat
						137	●●693981	Gasket-Float Bowl
						147	692886	Jet-Pilot
						186	493496	Connector-Hose
						276	●●271716	Washer-Sealing
						365	94920	Screw (Carburetor)
						633	●●693867	Seal-Choke/Throttle Shaft
						633A	●●691321	Seal-Choke/Throttle Shaft
						692	690572	Spring-Detent
						975	493640	Bowl-Float

★ Included in Engine Gasket Set-See Ref. 358.
● Included in Carburetor Overhaul Kit-See Ref.121.

◆ Included in Valve Gasket Set-See Ref. 1095.
◆ Included in Carburetor Gasket Set-See Ref. 977.

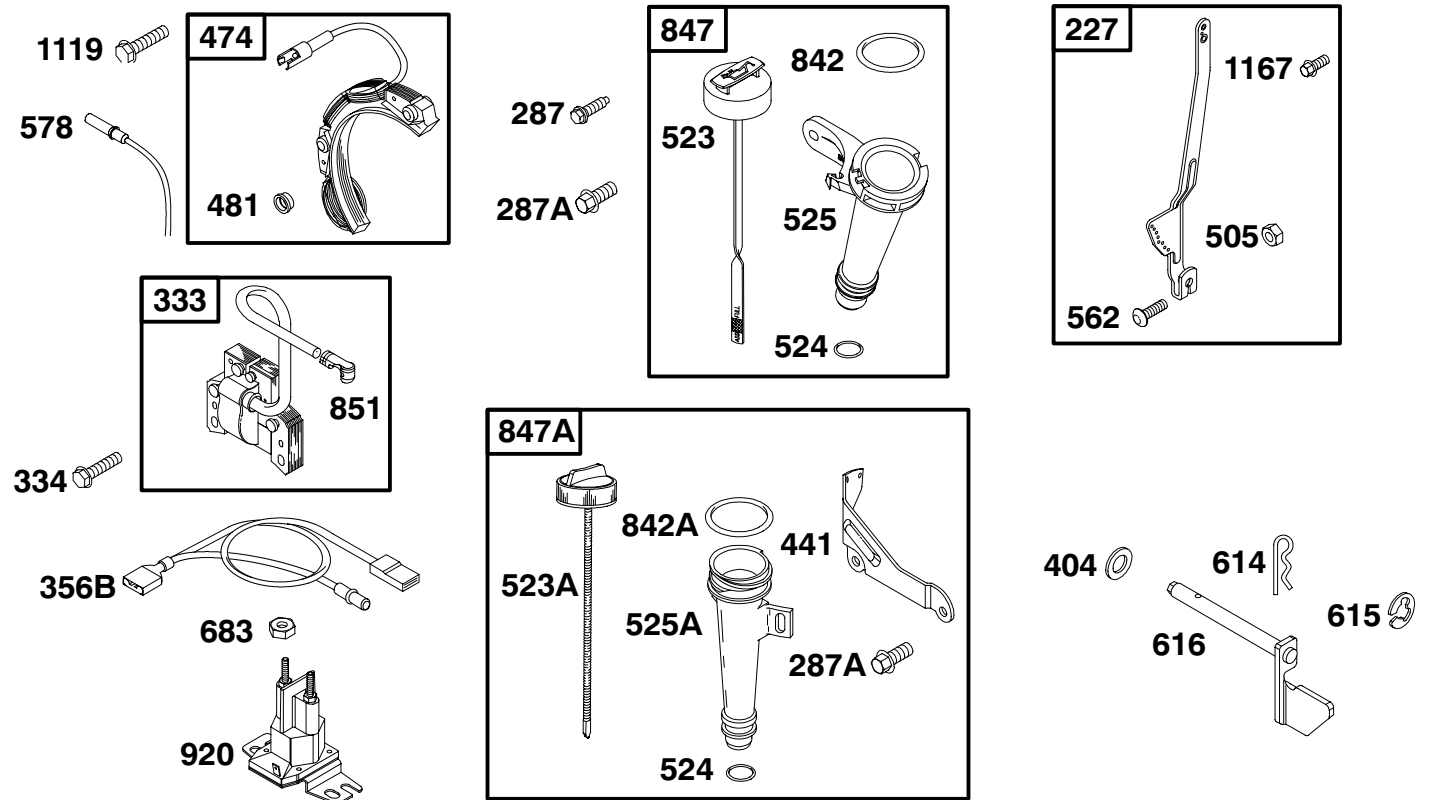


REF. NO.	PART NO.	DESCRIPTION	REF. NO.	PART NO.	DESCRIPTION	REF. NO.	PART NO.	DESCRIPTION
15	94687	Plug-Oil Drain (Magnetic)	269	26099	Wire-Control (54" Length)	356	690817	Wire-Stop (6.25" Length)
98A	493280	Kit-Idle Speed	----- Note -----			356A	692363	Wire-Stop (9.5" Length)
188	690297	Screw (Control Bracket)	267	26633	Wire-Control (78" Length)	427	690355	Nut (Control Bracket)
188A	94929	Screw (Control Bracket)	270	63426	(Cut to Required Length)	497	94896	Screw (Stop Switch Bracket)
202	691282	Link-Mechanical Governor	271	290568	Lever-Control	504	495659	Washer Set-Friction
209	262283	Spring-Governor	347	495098	Switch-Rocker	627	690474	Bracket-Stop Switch
222	691383	Bracket-Control	----- Note -----			843	280643	Sleeve-Lever
232	260585	Link-Governor Spring	493521	Switch-Rocker	978	★273326	Gasket-Oil Gard®	
265	221535	Clamp-Casing	Used On Type No(s). 0011, 0041, 0059, 0060, 0072, 0080, 0083, 0084, 0085, 0360, 0555, 0573, 0574, 1059, 1060, 1177.			980	496605	Kit-Oil Gard®
267	94906	Screw (Casing Clamp)	354	90576	Nut (Stop Switch Bracket)	982A	690350	Screw (Oil Gard® Kit)
268	691072	Casing-Control Wire (48" Length)						
		----- Note -----						
		65616 Casing-Control Wire (72" Length) (Cut to Required Length)						

★ Included in Engine Gasket Set-See Ref. 358.
 ● Included in Carburetor Overhaul Kit-See Ref.121.

◆ Included in Valve Gasket Set-See Ref. 1095.
 ♦ Included in Carburetor Gasket Set-See Ref. 977.

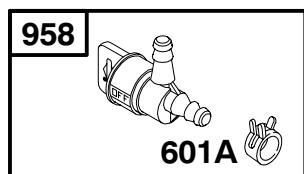
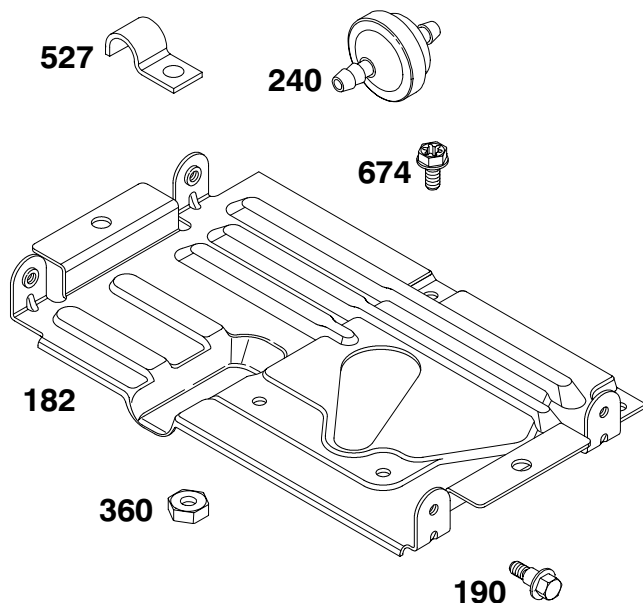
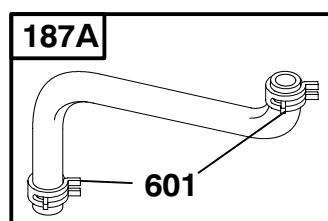
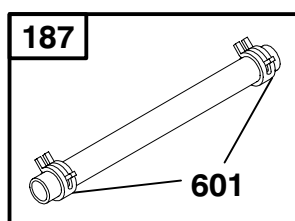
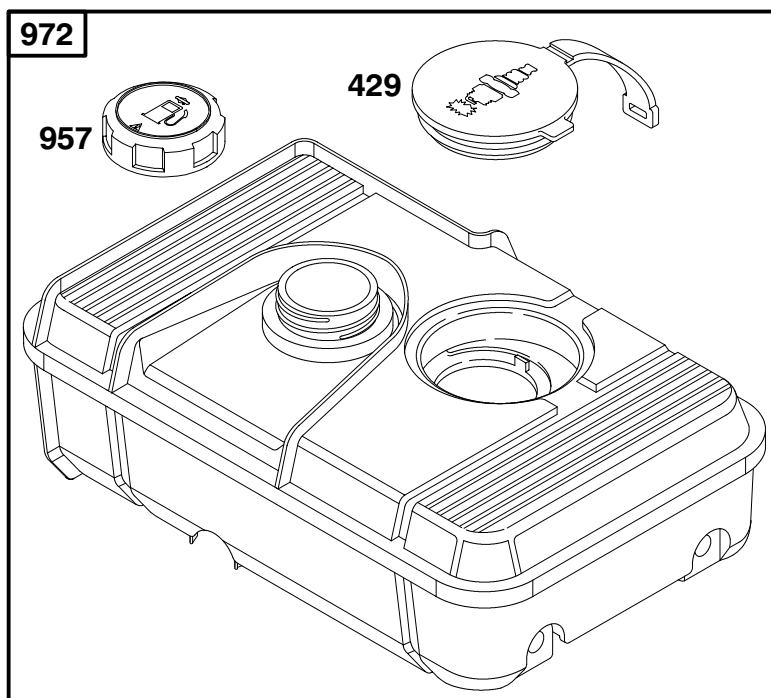
133400 to 133499



REF. NO.	PART NO.	DESCRIPTION	REF. NO.	PART NO.	DESCRIPTION	REF. NO.	PART NO.	DESCRIPTION
227	690842	Lever-Governor Control ----- Note ----- 691433 Lever-Governor Control Used On Type No(s). 0070, 0571.	523A	691388	Dipstick (Used Before Code Date 99031500). ----- Note ----- 690777 Dipstick Used On Type No(s). 0080,0085.	683	92278	Nut (Starter Solenoid)
287	94807	Screw (Dipstick Tube) (Used After Code Date 99031400).	524	★271485	Seal-Dipstick Tube	842	★280393	O-Ring Seal (Used After Code Date 99031400).
287A	94929	Screw (Dipstick Tube)	525	694379	Tube-Dipstick (Used After Code Date 99031400).	842A	★270920	O-Ring Seal (Used Before Code Date 99031500).
333	397358	Armature-Magneto	525A	694531	Tube-Dipstick (Used Before Code Date 99031500). ----- Note ----- 690587 Tube-Dipstick Used On Type No(s). 0080,0085.	847	694381	Dipstick/Tube Assembly (Used After Code Date 99031400).
334	93414	Screw (Magneto Armature)	562	691119	Bolt (Governor Control Lever)	847A	691379	Dipstick/Tube Assembly (Used Before Code Date 99031500).
356B	690818	Wire-Stop	578	393422	Wire Assembly	851	493880	Terminal-Sparkplug
404	94927	Washer (Governor Crank)	614	93306	Pin-Cotter	920	807829	Solenoid-Starter
441	690448	Bracket-Oil Fill	615	93307	Retainer-E Ring	1119	93621	Screw (Alternator)
474	494254	Alternator	616	495243	Crank-Governor	1167	94929	Screw (Governor Control Lever) (Remote Link Attachment)
481	231767	Bushing-Alternator						
505	691251	Nut (Governor Control Lever)						
523	495264	Dipstick (Used After Code Date 99031400).						

★ Included in Engine Gasket Set-See Ref. 358.
● Included in Carburetor Overhaul Kit-See Ref.121.

◆ Included in Valve Gasket Set-See Ref. 1095.
◆ Included in Carburetor Gasket Set-See Ref. 977.

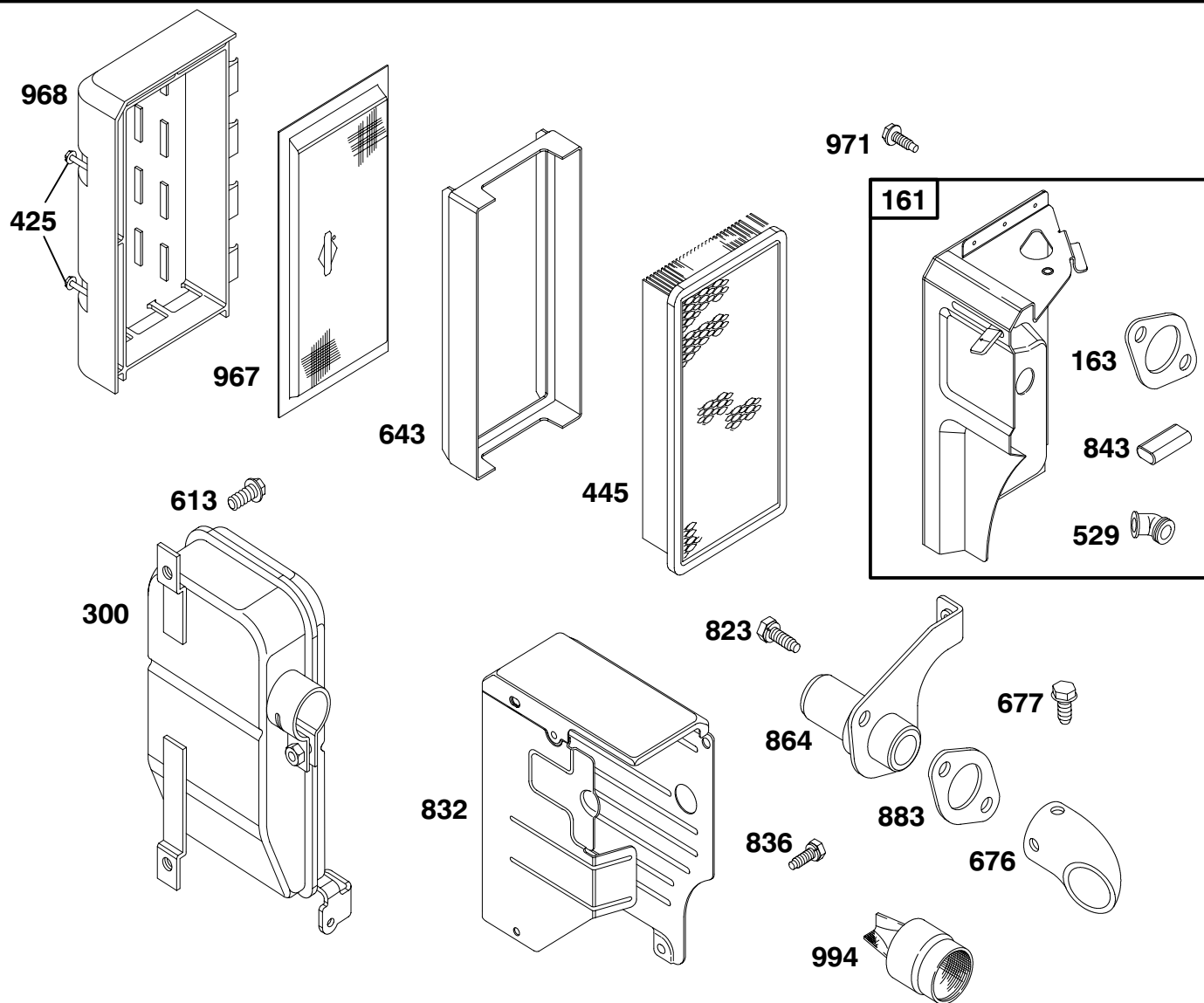


REF. NO.	PART NO.	DESCRIPTION	REF. NO.	PART NO.	DESCRIPTION	REF. NO.	PART NO.	DESCRIPTION
182	690469	Bracket-Fuel Tank	360	94010	Nut (Fuel Tank Bracket)	674	94905	Screw (Fuel Tank Bracket)
187	298049	Line-Fuel (Cut to Length)	429	692354	Cover-Sparkplug	957	493988	Cap-Fuel Tank
187A	495218	Line-Fuel (Molded)	527	690423	Clamp-Tube	958	494769	Valve-Fuel Shut-Off
190	94895	Screw (Fuel Tank)	601	95162	Clamp-Hose (Green)	972	495345	Tank-Fuel
240	298090	Filter-Fuel	601A	93807	Clamp-Hose (Black)			

★ Included in Engine Gasket Set-See Ref. 358.
● Included in Carburetor Overhaul Kit-See Ref.121.

◆ Included in Valve Gasket Set-See Ref. 1095.
◆ Included in Carburetor Gasket Set-See Ref. 977.

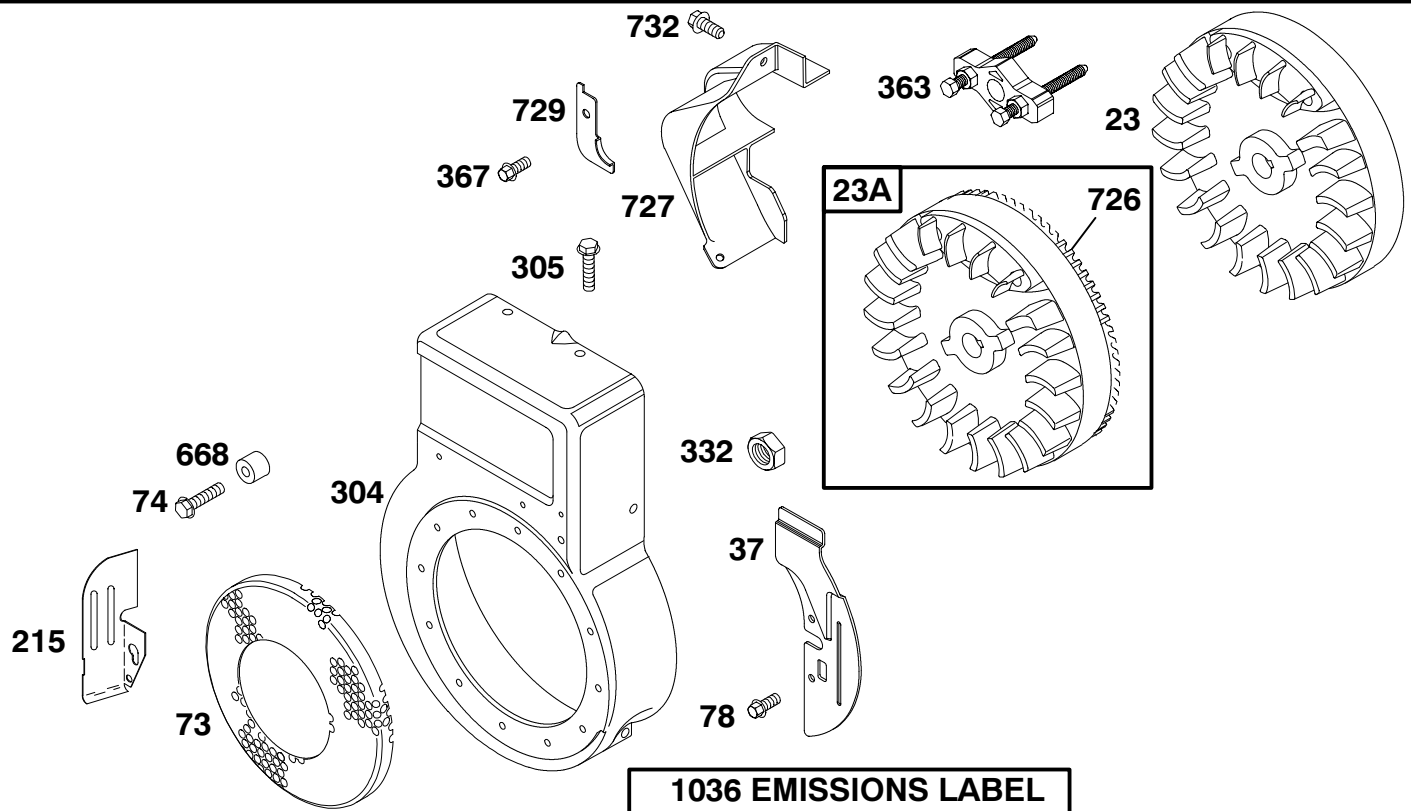
133400 to 133499



REF. NO.	PART NO.	DESCRIPTION	REF. NO.	PART NO.	DESCRIPTION	REF. NO.	PART NO.	DESCRIPTION
161	691384	Base-Air Cleaner	677	94896	Screw (Muffler Deflector)	843	280149	Sleeve-Lever
163	★272948	Gasket-Air Cleaner	823	94706	Screw (Muffler Adapter)	864	690812	Adapter-Muffler
300	692006	Muffler	832	690811	Guard-Muffler	883	★272309	Gasket-Exhaust
425	94872	Screw (Air Cleaner Cover)			----- Note ----- 691432 Guard-Muffler Used On Type No(s). 0070.	967	492889	Filter-Pre Cleaner Filter
445	494511	Filter-Air Cleaner Cartridge	836	94929	Screw (Muffler Guard)	968	691327	Cover-Air Cleaner
529	66578	Grommet				971	690370	Screw (Air Cleaner Base)
613	94929	Screw (Exhaust Muffler)				994	690813	Arrestor-Spark
643	280871	Retainer-Air Filter						
676	495074	Deflector-Muffler						

★ Included in Engine Gasket Set-See Ref. 358.
● Included in Carburetor Overhaul Kit-See Ref.121.

◆ Included in Valve Gasket Set-See Ref. 1095.
◆ Included in Carburetor Gasket Set-See Ref. 977.



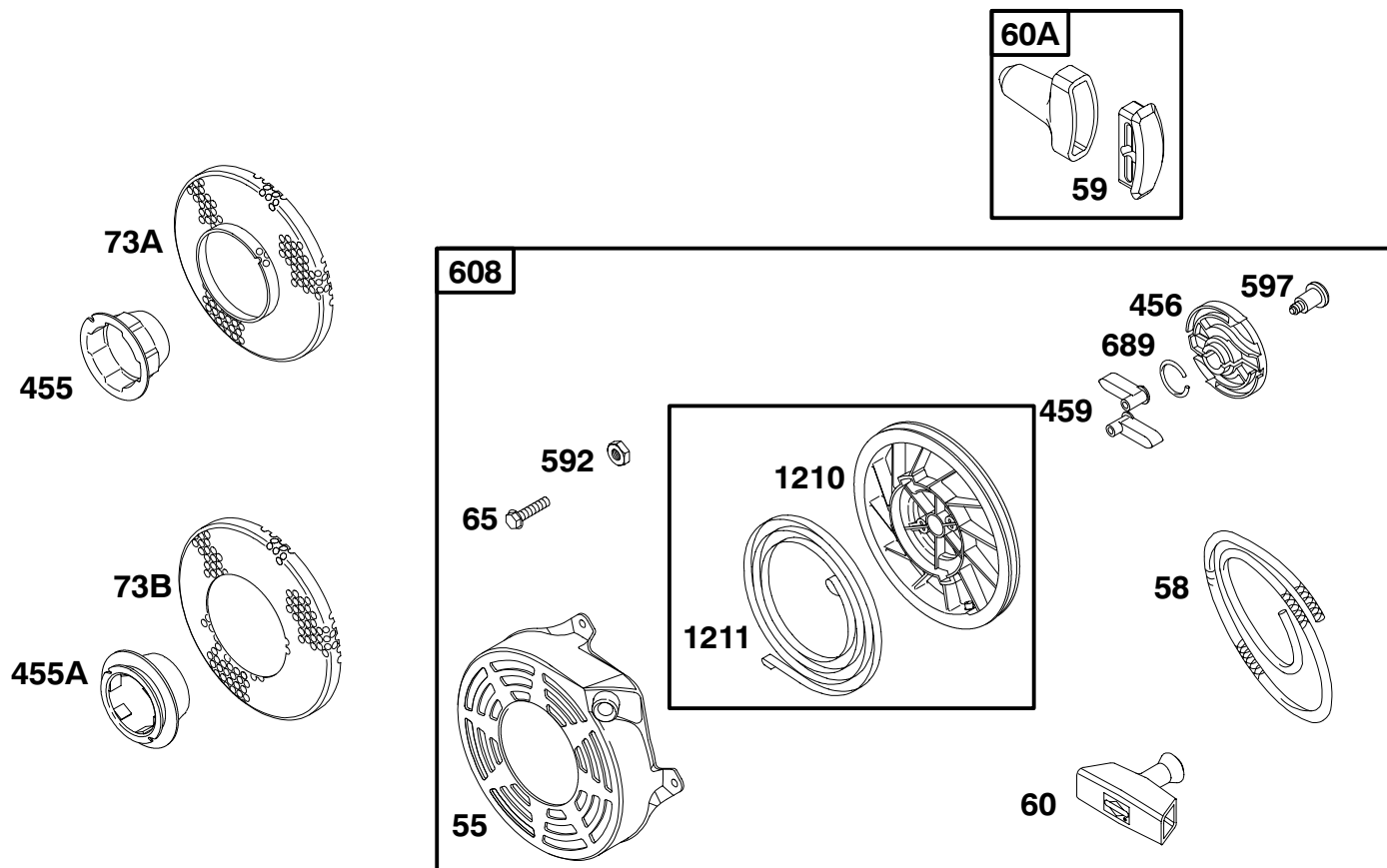
1036 EMISSIONS LABEL

REF. NO.	PART NO.	DESCRIPTION	REF. NO.	PART NO.	DESCRIPTION	REF. NO.	PART NO.	DESCRIPTION
23	399673	Flywheel	305	690960	Screw (Blower Housing)	1036	695099	Label-Emissions (Used After Code Date 99093000).
23A	690820	Flywheel	332	94877	Nut (Flywheel)			----- Note -----
37	222443	Guard-Flywheel	363	19069	Flywheel Puller			694516 Label-Emissions
73	224883	Screen-Rotating	367	94680	Screw (Wire Clip)			(Used Before Code Date 99100100 and After Code Date 98123100).
74	690306	Screw (Rotating Screen)	668	690531	Spacer			499348 Label-Emissions
78	94680	Screw (Flywheel Guard)	726	495765	Gear-Ring (Includes Mtg. Hardware)			(Used Before Code Date 99010100 and After Code Date 97052500).
215	223886	Guide-Air ----- Note ----- 690472 Guide-Air (Used on Engines With Electric Start)	727	690600	Cover-Starter Drive			499347 Label-Emissions
304	691410	Housing-Blower (Red) ----- Note ----- 495759 Housing-Blower (Black) 495760 Housing-Blower Used On Type No(s). 0042, 0050, 0051, 0350, 0574, 1050.	729	690471	Clip-Wire			
			732	691097	Screw (Starter Drive Cover)			

★ Included in Engine Gasket Set-See Ref. 358.
● Included in Carburetor Overhaul Kit-See Ref.121.

◆ Included in Valve Gasket Set-See Ref. 1095.
◆ Included in Carburetor Gasket Set-See Ref. 977.

133400 to 133499



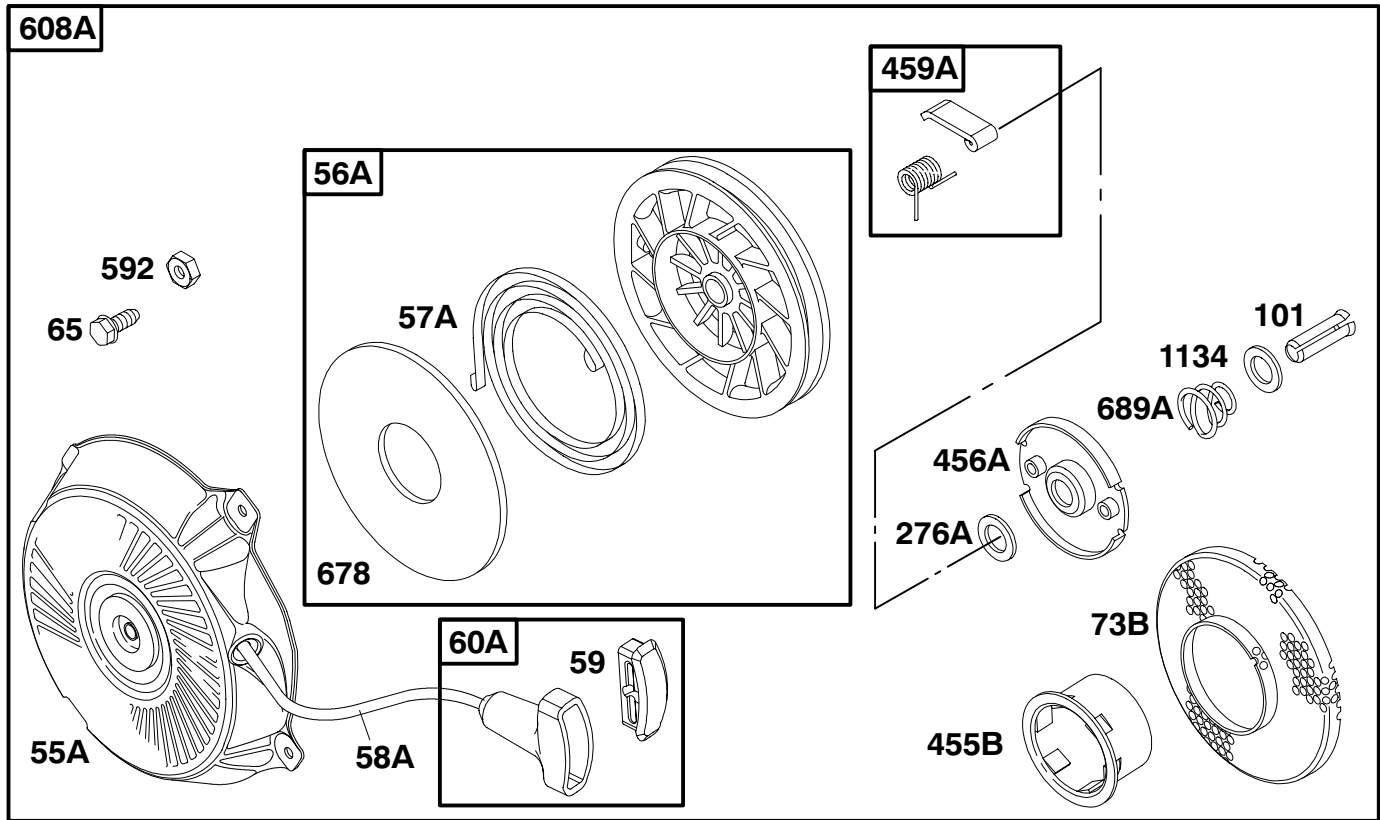
REF. NO.	PART NO.	DESCRIPTION	REF. NO.	PART NO.	DESCRIPTION	REF. NO.	PART NO.	DESCRIPTION
55	691422	Housing-Rewind Starter	73B	691226	Screen-Rotating (Used After Code Date 95010800).	597	94943	Screw (Pawl Friction Plate)
58	280399	Rope-Starter (Cut To Required Length)	455	691219	Cup-Flywheel (Used After Code Date 95020300).	608	497830	Starter-Rewind
59	396892	Insert-Grip	455A	691426	Cup-Flywheel (Used After Code Date 95010800).	689	263073	Spring-Friction
60	281101	Grip-Starter Rope	456	281503	Plate-Pawl Friction	1210	498144	Pulley/Spring Assembly (Pulley)
60A	393152	Grip-Starter Rope	459	281505	Pawl-Ratchet	1211	498144	Pulley/Spring Assembly (Spring)
65	94904	Screw (Rewind Starter)	592	94908	Nut (Rewind Starter)			
73A	691225	Screen-Rotating (Used After Code Date 95020300).						

★ Included in Engine Gasket Set-See Ref. 358.

● Included in Carburetor Overhaul Kit-See Ref.121.

◆ Included in Valve Gasket Set-See Ref. 1095.

◆ Included in Carburetor Gasket Set-See Ref. 977.

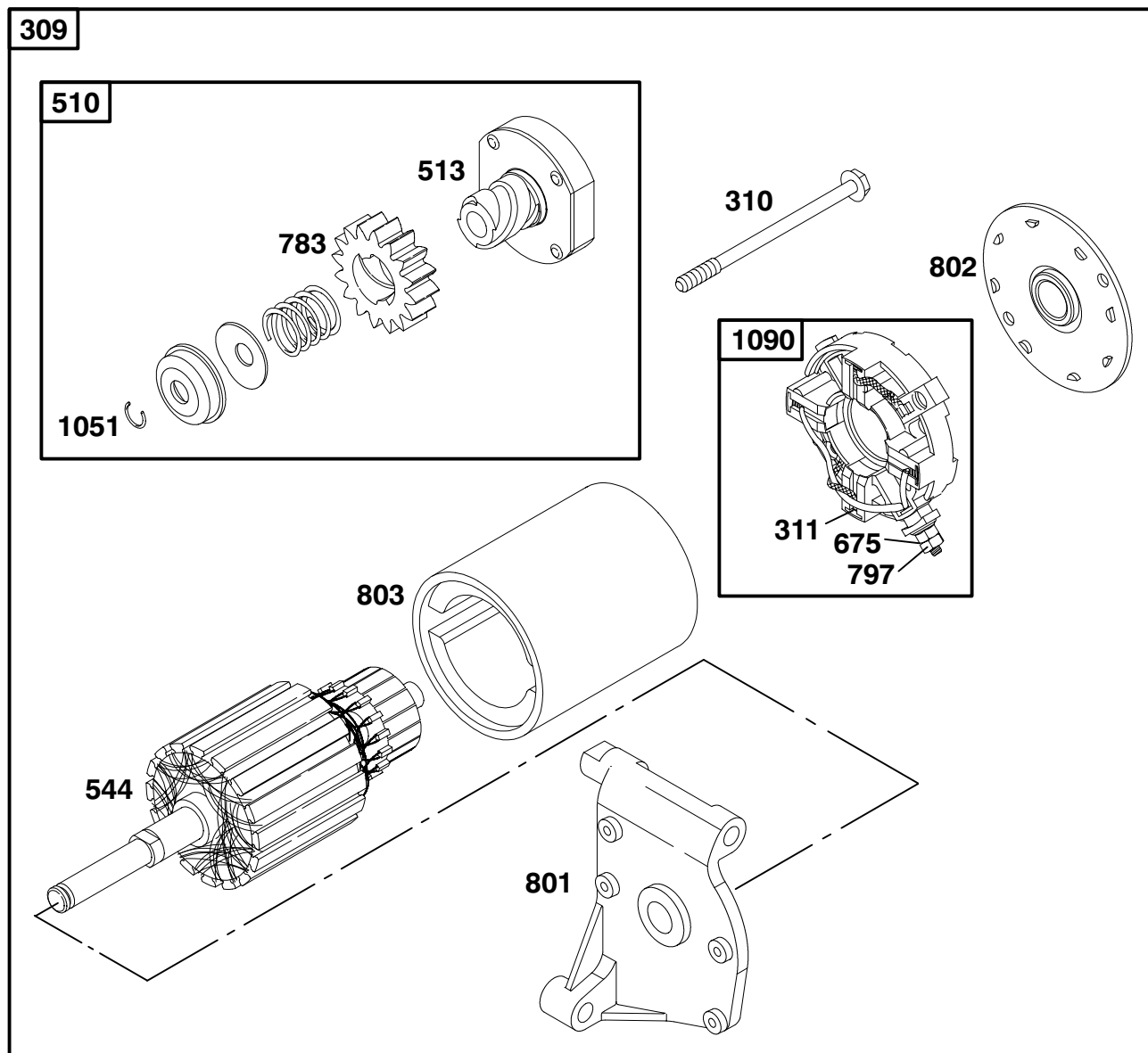


REF. NO.	PART NO.	DESCRIPTION	REF. NO.	PART NO.	DESCRIPTION	REF. NO.	PART NO.	DESCRIPTION
55A	495766	Starter-Rewind	73B	691226	Screen-Rotating (Used Before Code Date 95020200).	459A	492833	Pawl-Ratchet
56A	493824	Pulley-Starter	101	262626	Pin-Shaft	592	94908	Nut (Rewind Starter)
57A	491889	Spring-Rewind Starter	276A	280973	Washer-Sealing	608A	495766	Starter-Rewind
58A	280406	Rope-Starter (Cut to Required Length)	455B	224250	Cup-Flywheel (Used Before Code Date 95020200).	678	224278	Spacer-Rewind
59	396892	Insert-Grip	456A	224321	Plate-Pawl Friction	689A	262625	Spring-Friction
60A	393152	Grip-Starter Rope				1134	224322	Washer (Pawl Friction Plate)
65	94904	Screw (Rewind Starter)						

★ Included in Engine Gasket Set-See Ref. 358.
● Included in Carburetor Overhaul Kit-See Ref.121.

◆ Included in Valve Gasket Set-See Ref. 1095.
◆ Included in Carburetor Gasket Set-See Ref. 977.

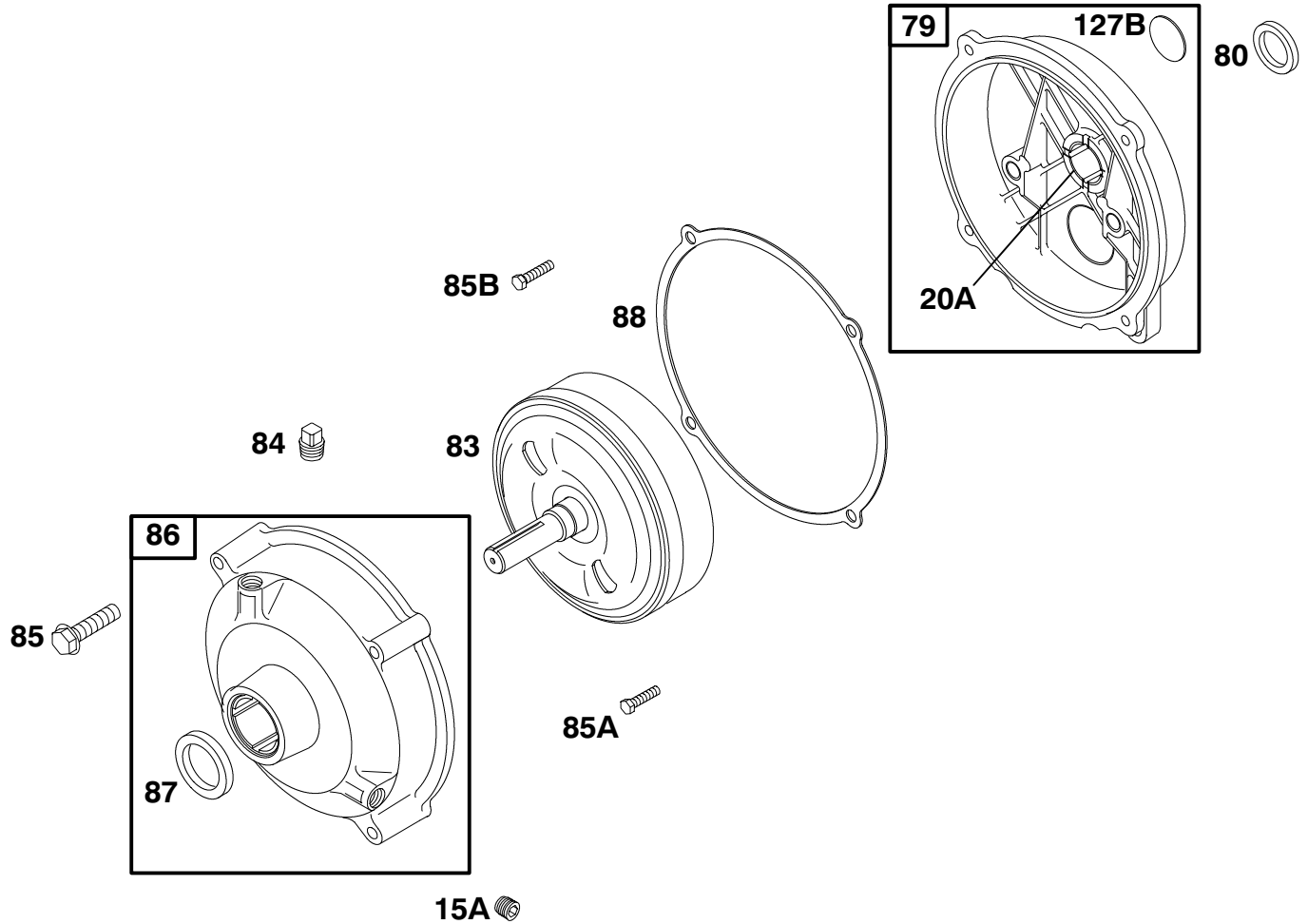
133400 to 133499



REF. NO.	PART NO.	DESCRIPTION	REF. NO.	PART NO.	DESCRIPTION	REF. NO.	PART NO.	DESCRIPTION
309	690658	Motor-Starter	697	93585	Screw (Drive Cap)	802	497607	Cap-End
310	690323	Bolt (Starter Motor)	697A	690298	Screw (Drive Cap)	803	691427	Housing-Starter
311	497608	Brush Set	783	692353	Gear-Pinion	1051	263080	Ring-Retaining
510	499308	Drive-Starter	797	92278	Nut (Brush Retainer)	1090	497605	Retainer-Brush
513	398003	Clutch-Drive	801	690835	Cap-Drive	1195	691075	Washer (Drive Cap)
544	692966	Armature-Starter						
675	225137	Washer (Brush Retainer)						

- ★ Included in Engine Gasket Set-See Ref. 358.
- Included in Carburetor Overhaul Kit-See Ref.121.

- ◆ Included in Valve Gasket Set-See Ref. 1095.
- ◆ Included in Carburetor Gasket Set-See Ref. 977.

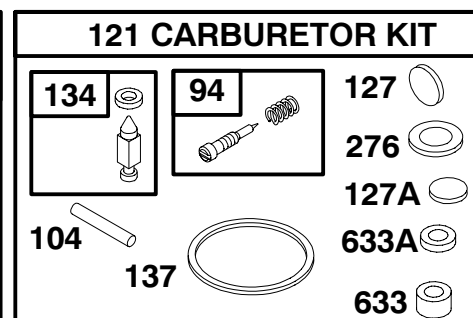
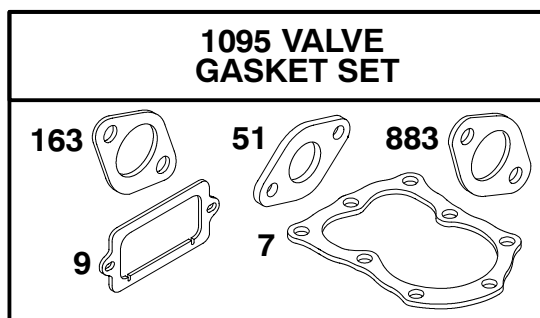
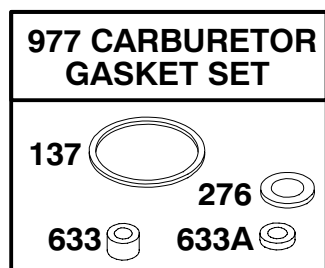
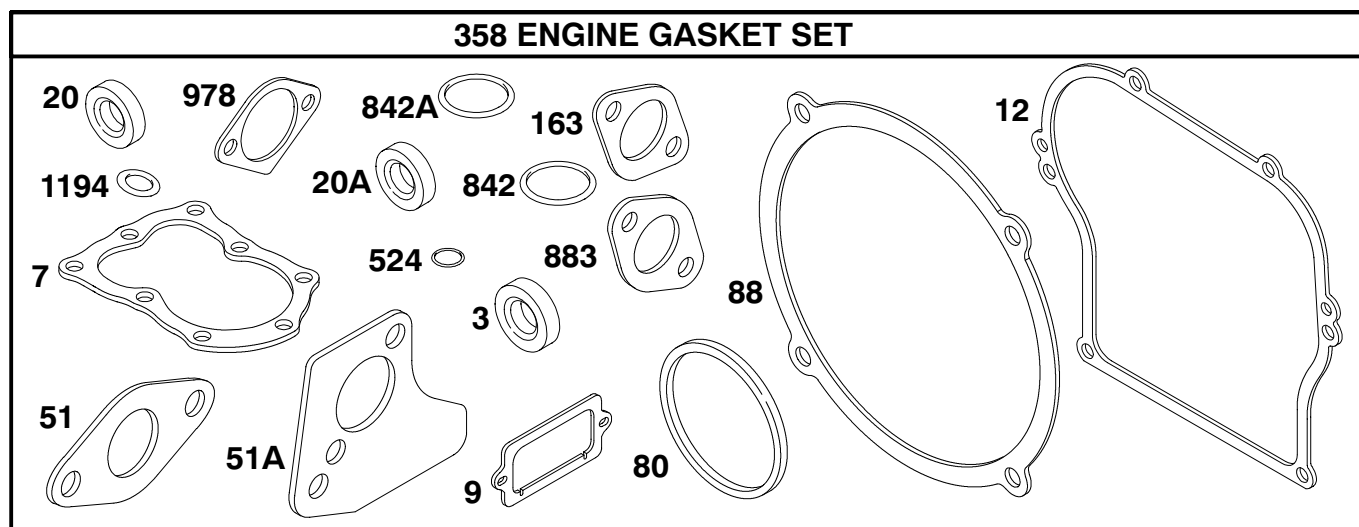


REF. NO.	PART NO.	DESCRIPTION	REF. NO.	PART NO.	DESCRIPTION	REF. NO.	PART NO.	DESCRIPTION
15A	94886	Plug-Oil Drain	85	691117	Screw (Gear Cover to Gear Reduction)	86	690608	Cover-Gear
20A	★299819	Seal-Oil (PTO Side)	85A	690369	Screw (Gear Reduction Case) (7/8" Length)	87	19011	Seal-Gear Reduction
79	690605	Reduction-Gear Case	85B	691122	Screw (Gear Reduction Case) (1 1/2" Length)	88	★27313	Gasket-Gear Reduction Cover
80	★27667	Gasket-Gear Case				127B	22831	Plug-Welch
83	690374	Shaft-Auxiliary Drive						
84	691121	Plug-Breather						

★ Included in Engine Gasket Set-See Ref. 358.
● Included in Carburetor Overhaul Kit-See Ref.121.

◆ Included in Valve Gasket Set-See Ref. 1095.
◆ Included in Carburetor Gasket Set-See Ref. 977.

133400 to 133499



REF. NO.	PART NO.	DESCRIPTION	REF. NO.	PART NO.	DESCRIPTION	REF. NO.	PART NO.	DESCRIPTION
	3	★299819 Seal-Oil (Magneto Side)		51	★272295 Gasket-Intake		633	●★693867 Seal-Choke/Throttle Shaft
	7	★272157 Gasket-Cylinder Head		51A	★273113 Gasket-Intake		633A	●★691321 Seal-Choke/Throttle Shaft
	9	★27549 Gasket-Breather		80	★27667 Gasket-Gear Case		842	★280393 O-Ring Seal (Used After Code Date 99031400).
	12	★270080 Gasket-Crankcase (.015" Thick, Standard)		88	★27313 Gasket-Gear Reduction Cover		842A	★270920 O-Ring Seal (Used Before Code Date 99031500).
		----- Note -----		94	●493765 Kit-Idle Mixture		883	★272309 Gasket-Exhaust
		★270125 Gasket-Crankcase (.005" Thick)		104	●691242 Pin-Float Hinge		977	498261 Gasket Set-Carburetor
		★270126 Gasket-Crankcase (.009" Thick)		121	498260 Kit-Carburetor Overhaul		978	★273236 Gasket-Oil Gard®
	20	★495307 Seal-Oil (PTO Side)		127	●223472 Plug-Welch		1095	498531 Gasket Set-Valve
	20A	★299819 Seal-Oil (PTO Side)		127A	●694468 Plug-Welch		1194	★271485 O-Ring Seal (Plug)
				134	●398188 Kit-Needle/Seat			
				137	●★693981 Gasket-Float Bowl			
				163	★272948 Gasket-Air Cleaner			
				276	●★271716 Washer-Sealing			
				358	495661 Gasket Set-Engine			
				524	★271485 Seal-Dipstick Tube			

★ Included in Engine Gasket Set-See Ref. 358.
 ● Included in Carburetor Overhaul Kit-See Ref.121.

◆ Included in Valve Gasket Set-See Ref. 1095.
 ♦ Included in Carburetor Gasket Set-See Ref. 977.