

128800 to 128899

Illustrated Parts List Model Series 128800 to 128899

TYPE NUMBERS

0100, 0127, 0157,
0208 through 0220,
0264 through 0284,
0408 through 0412,
0462 through 0471,
0508 through 0531,
0600 through 0632,
0657 through 0668,
0758, 0764,
0807 through 0840,
0850 through 0898,
0905 through 0910,
1108 through 1132,
1165 through 1194,

TYPE NUMBERS

1325 through 1367,
1508 through 1575,
1700 through 1768,
1907 through 1957,
1961 through 1998,
2005 through 2016,
2105,
2308 through 2344,
2366 through 2397,
2608 through 2681,
2915, 2920,
3110 through 3172,
4305, 4605, 4905,
4906.

TO FIND

THE CORRECT NUMBER OF THE PART YOU NEED: FOLLOW THE INSTRUCTIONS BELOW

- A. Refer to Engine Model, Type and Code Number that is stamped on the blower housing of engine. Engine type numbers such as 0123 01 are listed only as 0123 in most instances. The two digits (01 or 02, etc.) to the right of the space may be required for more accurate parts identification in some instances. Select the Illustrated Parts List covering the correct Model Series and Type Number.
- B. Refer to the Illustrations and compare the original part with Illustration. The number next to the illustration is the Reference Number. Assemblies include all parts shown in frames. All parts shown in assembly frames having individual reference numbers can be purchased separately.
- C. After the Reference Number has been identified, refer to the Numerical text, where Reference and Primary Part Number are listed. THE PRIMARY PART IS USED ON ALL TYPE NUMBERS EXCEPT THOSE TYPE NUMBERS UNDER "NOTE."
- D. If a "Note" appears below the Primary Part Number, it means that this part differs from the Primary Part for certain types. If your Type number is listed under "Note," order the part referred to at the "Note."
- E. If your Engine Type Number does not appear after any part number listed under "Note," use the Primary Part Number.
- F. For Engine Type Numbers not covered by this book, check other Parts Lists having the same engine model or contact your source of supply.

PRINTED IN U.S.A.

BRIGGS & STRATTON



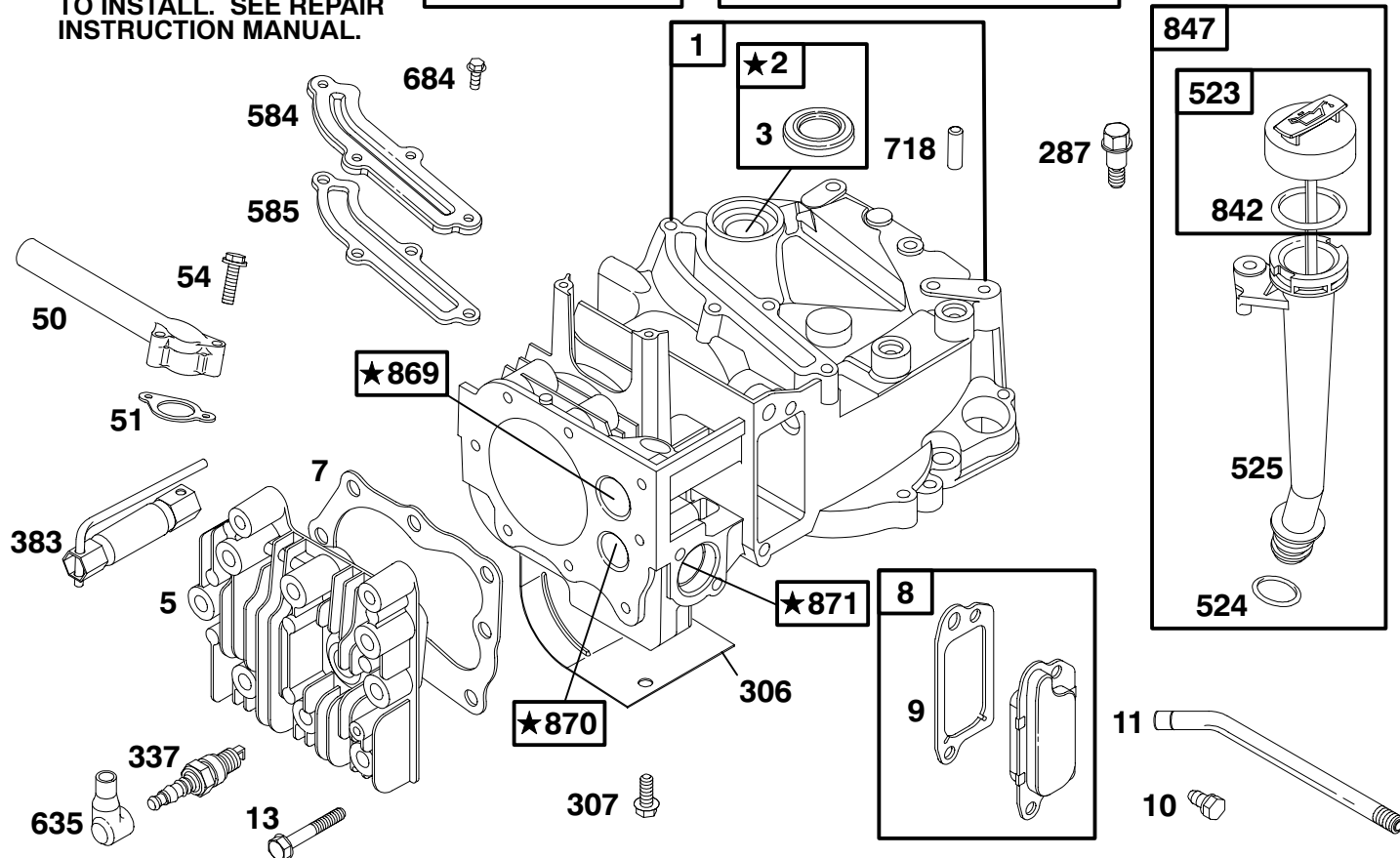
COPYRIGHT by BRIGGS & STRATTON CORPORATION
All rights reserved. No part of this material may be reproduced or transmitted, in any form or by any means, electronic or mechanical, including photocopying, recording or by any information storage and retrieval system, without permission in writing from Briggs & Stratton Corporation.

128800 to 128899

★ **REQUIRES SPECIAL TOOLS TO INSTALL. SEE REPAIR INSTRUCTION MANUAL.**

1019 LABEL KIT

1058 OWNER'S MANUAL



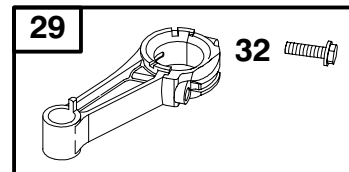
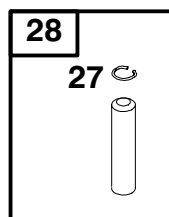
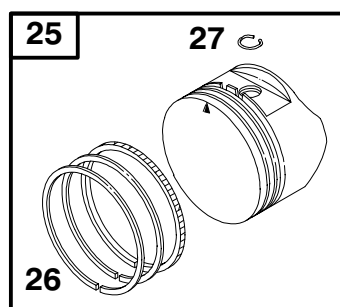
REF. NO.	PART NO.	DESCRIPTION	REF. NO.	PART NO.	DESCRIPTION	REF. NO.	PART NO.	DESCRIPTION
1	493260	Cylinder Assembly	306	690450	Shield-Cylinder	847	495263	Dipstick/Tube Assembly
2	399269	Kit-Bushing/Seal (Magneto Side)	307	690345	Screw (Cylinder Shield)	869	691155	Seat-Valve (Intake)
3	★299819	Seal-Oil (Magneto Side)	337	802592	Sparkplug (Resistor Type)	870	690380	Seat-Valve (Exhaust)
5	691160	Head-Cylinder	----- Note -----			871	262001	Bushing-Valve Guide (Exhaust Valve)
7★	272916	Gasket-Cylinder Head	383	89838	Wrench-Sparkplug	----- Note -----		
8	695250	Breather Assembly	523	495264	Dipstick	63709 Bushing-Valve-Guide (Intake Valve)		
9★	272481	Gasket-Breather	524	★280966	Seal-Dipstick Tube	1019	494256	Kit-Label
10	94650	Screw (Breather Assembly)	525	495265	Tube-Dipstick	1058	274783	Owner's Manual (Emission Engines)
11	231933	Tube-Breather	584	692342	Cover-Breather Passage	----- Note -----		
13	94547	Screw (Cylinder Head)	585	★272238	Gasket-Breather Passage	272262 Owner's Manual (Non Emission Engines)		
50	497465	Manifold-Intake	635	66538	Boot-Sparkplug			
51	★272199	Gasket-Intake	684	690345	Screw (Breather Passage Cover)			
54	94526	Screw (Intake Manifold)	718	230192	Pin-Locating			
287	94511	Screw (Dipstick Tube)	842	★280393	O-Ring Seal			

★ Included in Engine Gasket Set-See Ref. No. 358.

● Included in Carburetor Overhaul Kit-See Ref. No. 121.

◆ Included in Carburetor Gasket Set-See Ref. No. 977.

Included in Valve Gasket Set-See Ref. No. 1095.



32A

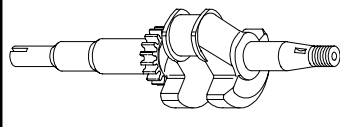
REF. NO.	PART NO.	DESCRIPTION	REF. NO.	PART NO.	DESCRIPTION	REF. NO.	PART NO.	DESCRIPTION
25	499429	Piston Assembly (Standard) (Used After Code Date 97011200). ----- Note ----- 493262 Piston Assembly (Standard) (Used Before Code Date 97011300). 499430 Piston Assembly (.010" O.S.) (Used After Code Date 97011200). 493385 Piston Assembly .010" O.S. (Used Before Code Date 97011300). 499431 Piston Assembly (.020" O.S.) (Used After Code Date 97011200). 493386 Piston Assembly .020" O.S. (Used Before Code Date 97011300). 499432 Piston Assembly (.030" O.S.) (Used After Code Date 97011200). 493387 Piston Assembly (.030" O.S.) (Used Before Code Date 97011300).	26	499425	Ring Set (Standard) (Used After Code Date 97011200). ----- Note ----- 493261 Ring Set (Standard) (Used Before Code Date 97011300). 499426 Ring Set (.010" O.S.) (Used After Code Date 97011200). 493388 Ring Set .010" O.S. (Used Before Code Date 97011300). 499427 Ring Set (.020" O.S.) (Used After Code Date 97011200). 493389 Ring Set (.020" O.S.) (Used Before Code Date 97011300). 499428 Ring Set (.030" O.S.) (Used After Code Date 97011200). 493390 Ring Set (.030" O.S.) (Used Before Code Date 97011300).	27	263190	Lock-Piston Pin (Used After Code Date 97011200). ----- Note ----- 26026 Lock-Piston Pin (Used Before Code Date 97011300). 28 499423 Pin-Piston (Standard) (Used After Code Date 97011200). ----- Note ----- 298909 Pin-Piston (Standard) (Used Before Code Date 97011300). 298908 Pin-Piston (.005" O.S.) (Used Before Code Date 97011300). 29 499424 Rod-Connecting (Standard) (Used After Code Date 97011200). ----- Note ----- 490566 Rod-Connecting (Standard) (Used Before Code Date 97011300). 490743 Rod-Connecting (.020" Undersize) (Used Before Code Date 97011300). 32 94699 Screw (Connecting Rod) 32A 695759 Screw (Connecting Rod) (Used After Code Date 00042200)

★ Included in Engine Gasket Set-See Ref. No. 358.
● Included in Carburetor Overhaul Kit-See Ref. No. 121.

◆ Included in Carburetor Gasket Set-See Ref. No. 977.
Included in Valve Gasket Set-See Ref. No. 1095.

128800 to 128899

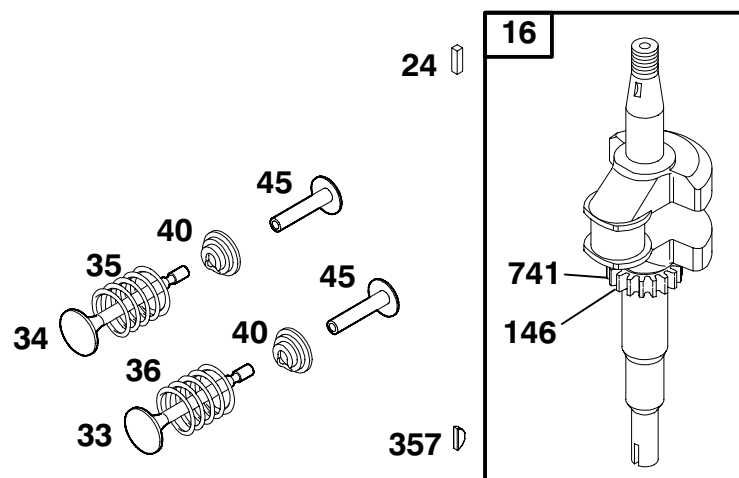
16



REF. NO.	PART NO.	DESCRIPTION	REF. NO.	PART NO.	DESCRIPTION	REF. NO.	PART NO.	DESCRIPTION
16	691451	Crankshaft (Used After Code Date 97011200). 493362 Crankshaft (Used Before Code Date 97011300). ----- Note ----- 691450 Crankshaft (Used After Code Date 97011200). Used on Type No(s). 0600, 0808, 0819, 0851, 0861, 0863, 1108, 1111, 1112, 1113, 1114, 1119, 1121, 1122, 1123, 1183, 1508, 1535, 1537, 1700, 1908, 1951, 2311, 2312, 2319, 2608, 2646, 2625, 2676. 493282 Crankshaft (Used Before Code Date 97011300). Used on Type No(s). 0100, 0208, 0209, 0211, 0212, 0213, 0214, 0408, 0409, 0508, 0509, 0518, 0600, 0808, 0819, 0851, 0861, 0863, 1108, 1111, 1112, 1113, 1114, 1119, 1121, 1122, 1123, 1183, 1508, 1535, 1537. 691452 Crankshaft (Used After Code Date 97011200). Used on Type No(s). 0817, 0822, 0830, 0831, 0832, 0833, 0834, 0852, 0866, 0872, 0873, 0874, 0875, 0876, 0891, 0892, 0898, 0906, 0909, 0910, 0911,			1125, 1126, 1166, 1167, 1173, 1187, 1189, 1194, 1366, 1367, 1515, 1520, 1533, 1539, 1566, 1567, 1568, 1569, 1909, 1933, 1952, 1957, 1966, 1974, 1982, 1998, 2009, 2014, 2334, 2366, 2609, 2641, 2666, 3110, 3168, 3171. 493363 Crankshaft (Used Before Code Date 97011300). Used on Type No(s). 0266, 0273, 0411, 0462, 0466, 0467, 0512, 0514, 0515, 0517, 0520, 0523, 0528, 0531, 0817, 0822, 0830, 0831, 0832, 0852, 0866, 0872, 0873, 0874, 0875, 0876, 0891, 0898, 0909, 1125, 1126, 1166, 1167, 1173, 1187, 1189, 1194, 1366, 1367, 1515, 1520, 1533, 1539, 1566, 1567. 691373 Crankshaft Used on Type No(s). 0127, 0157. 691454 Crankshaft (Used After Code Date 97011200). Used on Type No(s). 0826, 1536, 1926, 1954, 1955. 493946 Crankshaft (Used Before Code Date 97011300). Used on Type No(s). 0264, 0284, 0826.			691455 Crankshaft Used on Type No(s). 0908, 1132, 1193, 1994, 2008, 2105, 2395, 3130, 3131. 691375 Crankshaft (Used Before Code Date 97011300). Used on Type No(s). 0908, 1132, 1193, 2105, 692980 Crankshaft (Used After Code Date 97011200). Used on Type No(s). 0615, 0658, 1715, 1758, 2010, 2920, 4305. 494546 Crankshaft (Used Before Code Date 97011300). Used on Type No(s). 0658, 2333. 691482 Crankshaft (Used After Code Date 97011200). Used on Type No(s). 0807, 0839, 0888, 1192, 1907, 1910, 1921, 1939, 1961, 1977, 2007, 2011, 2016, 2332, 2333, 2392, 2393, 2394, 2626, 2644, 2681, 3134, 4305, 4605, 4905, 4906. 498174 Crankshaft (Used Before Code Date 97011300). Used on Type No(s). 0807, 0839, 1192, 1910, 1921, 1961, 2332, 4305, 4605, 4905, 4906. 692717 Crankshaft Used on Type No(s). 3132, 3135, 3170.

★ Included in Engine Gasket Set-See Ref. No. 358.
● Included in Carburetor Overhaul Kit-See Ref. No. 121.

◆ Included in Carburetor Gasket Set-See Ref. No. 977.
Included in Valve Gasket Set-See Ref. No. 1095.

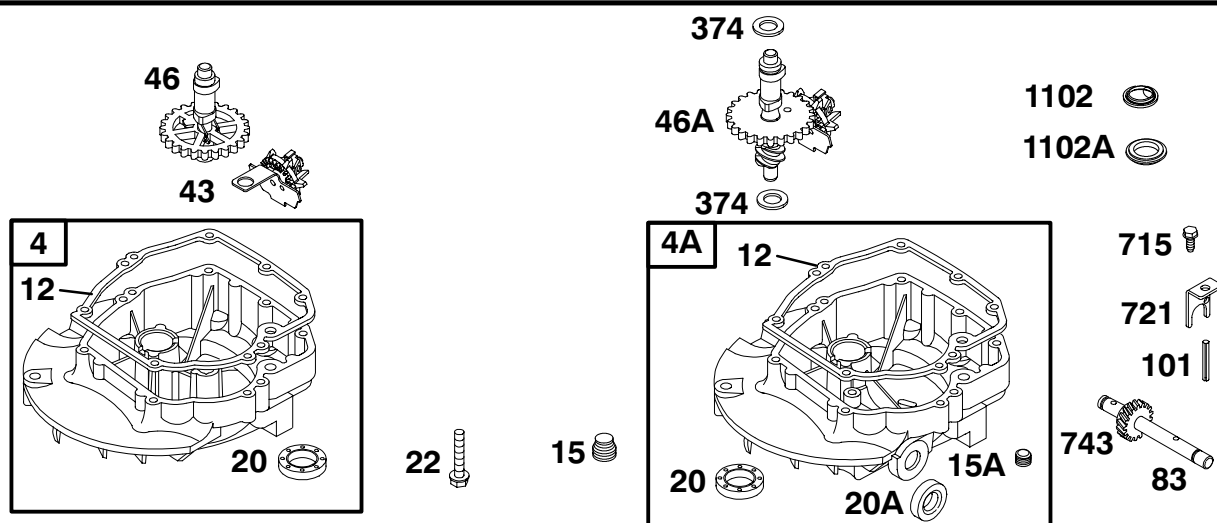


REF. NO.	PART NO.	DESCRIPTION	REF. NO.	PART NO.	DESCRIPTION	REF. NO.	PART NO.	DESCRIPTION
16		Crankshaft See Previous Page	34	262652	Valve-Intake	146	94388	Key-Timing
24	222698	Key-Flywheel	35	691270	Spring-Valve (Intake)	357	94329	Key-Drive Pulley
33	262651	Valve-Exhaust	36	691270	Spring-Valve (Exhaust)	741	262598	Gear-Timing
			40	93312	Retainer-Valve			
			45	690548	Tappet-Valve			

★ Included in Engine Gasket Set-See Ref. No. 358.
● Included in Carburetor Overhaul Kit-See Ref. No. 121.

◆ Included in Carburetor Gasket Set-See Ref. No. 977.
Included in Valve Gasket Set-See Ref. No. 1095.

128800 to 128899



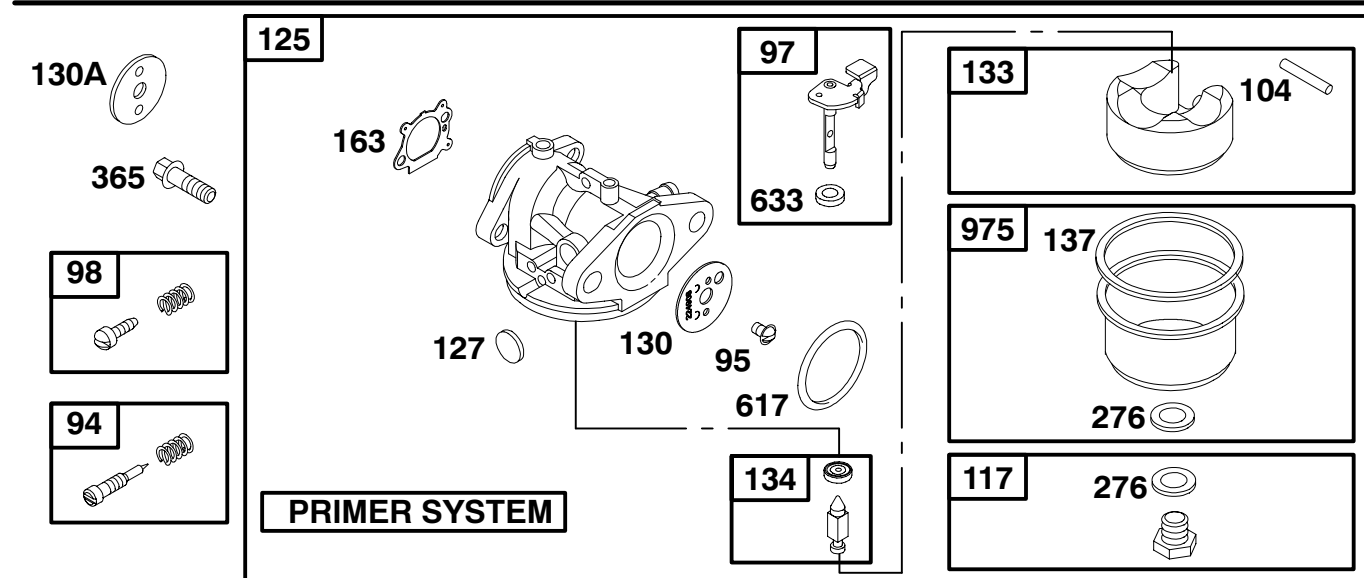
REF. NO.	PART NO.	DESCRIPTION	REF. NO.	PART NO.	DESCRIPTION	REF. NO.	PART NO.	DESCRIPTION
4	493279	Sump-Engine ----- Note ----- 498983 Sump-Engine Used on Type No(s). 0807, 0839, 0888, 1192, 1907, 1910, 1939, 1961, 1977, 2007, 2011, 2016, 2392, 2393, 2394, 2626, 2644, 2681, 3132, 3134, 3170, 4305, 4605, 4905, 4906.	46	691449	3170, 4305, 4605, 4905, 4906. Camshaft (Used After Code Date 96060200). ----- Note ----- 492830 Camshaft (Used Before Code Date 96060300).			Used on Type No(s). 0850, 0893, 0905, 1993, 2005. 690527 Shaft-Auxiliary Drive Used on Type No(s). 0668, 1188, 1191, 1762, 1768, 2391, 2388, 3131. 690522 Shaft-Auxiliary Drive Used on Type No(s). 2397.
4A	493365	Sump-Engine (Auxiliary Drive)	46A	691459	Camshaft (Counterclockwise) Used on Type No(s). 0625, 0632, 0659, 0668, 0821, 0823, 0853, 0893, 0905, 1125, 1126, 1175, 1176, 1188, 1191, 1725, 1732, 1762, 1768, 1953, 1954, 1979, 1993, 2005, 2388, 2391, 2396, 3131, 3172. 493738 Camshaft (Counterclockwise) (Used Before Code Date 96060300). Used on Type No(s). 0821, 0823, 0893, 0905, 1125, 1126, 1175, 1176.	101	93474	Pin-Shaft
12	★272198	Gasket-Crankcase				374	691074	Washer (Camshaft)
15	94880	Plug-Oil Drain (Square)				715	94929	Screw (Shaft Stop)
15A	691093	Plug-Oil Drain (Hex)				721	690449	Stop-Shaft
20	★399781	Seal-Oil (PTO Side)				743	231279	Gear-Drive (Counterclockwise) ----- Note ----- 690516 Gear-Drive (Clockwise) Used on Type No(s). 1955.
20A	391484	Seal-Oil (Auxiliary PTO)				1102	691255	Pilot-Guide Used on Type No(s). 0807, 0839, 0888, 1192, 1907, 1910, 1939, 1977, 2007, 2011, 2016, 2392, 2394, 2644, 2681, 3134, 3170, 4305, 4605, 4905, 4906.
22	691092	Screw (Engine Sump)						
43	493737	Slinger-Governor/Oil ----- Note ----- 691486 Slinger- Governor/Oil Used on Type No(s). 0807, 0839, 0888, 1192, 1907, 1910, 1939, 1961, 1977, 2016, 2332, 2333, 2392, 2393, 2394, 2626, 2644, 3132,	83	231671	Shaft-Auxiliary Drive ----- Note ----- 690521 Shaft-Auxiliary Drive	1102A	691266	Pilot-Guide Used on Type No(s). 1910, 1961, 2393, 2626, 3132.

★ Included in Engine Gasket Set-See Ref. No. 358.

● Included in Carburetor Overhaul Kit-See Ref. No. 121.

◆ Included in Carburetor Gasket Set-See Ref. No. 977.

Included in Valve Gasket Set-See Ref. No. 1095.

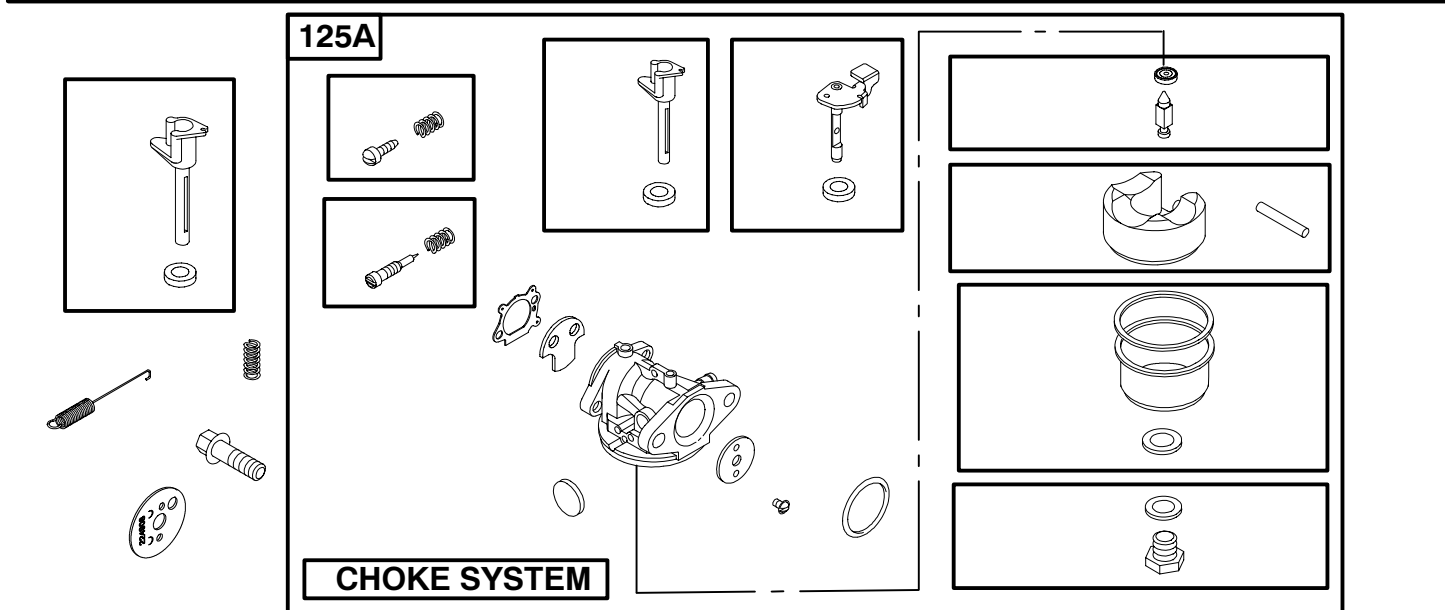


REF. NO.	PART NO.	DESCRIPTION	REF. NO.	PART NO.	DESCRIPTION	REF. NO.	PART NO.	DESCRIPTION
94	●493765	Kit-Idle Mixture			497315 Jet-Main High Altitude (Used After Code Date 96060200).			496114 Carburetor (Primer System) (Used Before Code Date 94070400).
95	94098	Screw (Throttle Valve)			496495 Jet-Main High Altitude (Used After Code Date 95102900 and Before Code Date 96060300).			Used on Type No(s). 0627, 0657, 0873, 1111, 1112, 1165, 1173.
97	493267	Shaft-Throttle			497315 Jet-Main High Altitude (Used After Code Date 94070300 and Before Code Date 95103000).			127 ●694468 Plug-Welch
98	398185	Kit-Idle Speed (Used Before Code Date 94070400). Used on Type No(s). 0627, 0657, 0873, 1111, 1112, 1165, 1173.			496063 Jet-Main High Altitude (Used Before Code Date 94070400). Used on Type No(s). 0627, 0657, 0873, 1111, 1112, 1165, 1173.			130 691203 Valve-Throttle
104	●691242	Pin-Float Hinge			125 498170 Carburetor (Primer System) (Used After Code Date 96060200).			130A 691181 Valve-Throttle (Used Before Code Date 94070400). Used on Type No(s). 0627, 0657, 0873, 1111, 1112, 1165, 1173.
117	494870	Jet-Main Standard (Used After Code Date 96060200).			----- Note -----			133 398187 Float-Carburetor
		497466 Jet-Main Standard (Used After Code Date 95102900 and Before Code Date 96060300).			498254 Carburetor (Primer System) (Used After Code Date 95102900 and Before Code Date 96060300).			134 ●398188 Kit-Needle/Seat
		494870 Jet-Main Standard (Used After Code Date 94070300 and Before Code Date 95103000).						137 ●693981 Gasket-Float Bowl
		493637 Jet-Main Standard (Used Before Code Date 94070400). Used on Type No(s). 0627, 0657, 0873, 1111, 1112, 1165, 1173.						163★●272653 Gasket-Air Cleaner
								276●271716 Washer-Sealing
								365 94840 Screw (Carburetor)
								617●270344 O-Ring Seal (Intake Manifold)
								633●691321 Seal-Throttle Shaft
								975 493640 Bowl-Float

★ Included in Engine Gasket Set-See Ref. No. 358.
● Included in Carburetor Overhaul Kit-See Ref. No. 121.

◆ Included in Carburetor Gasket Set-See Ref. No. 977.
Included in Valve Gasket Set-See Ref. No. 1095.

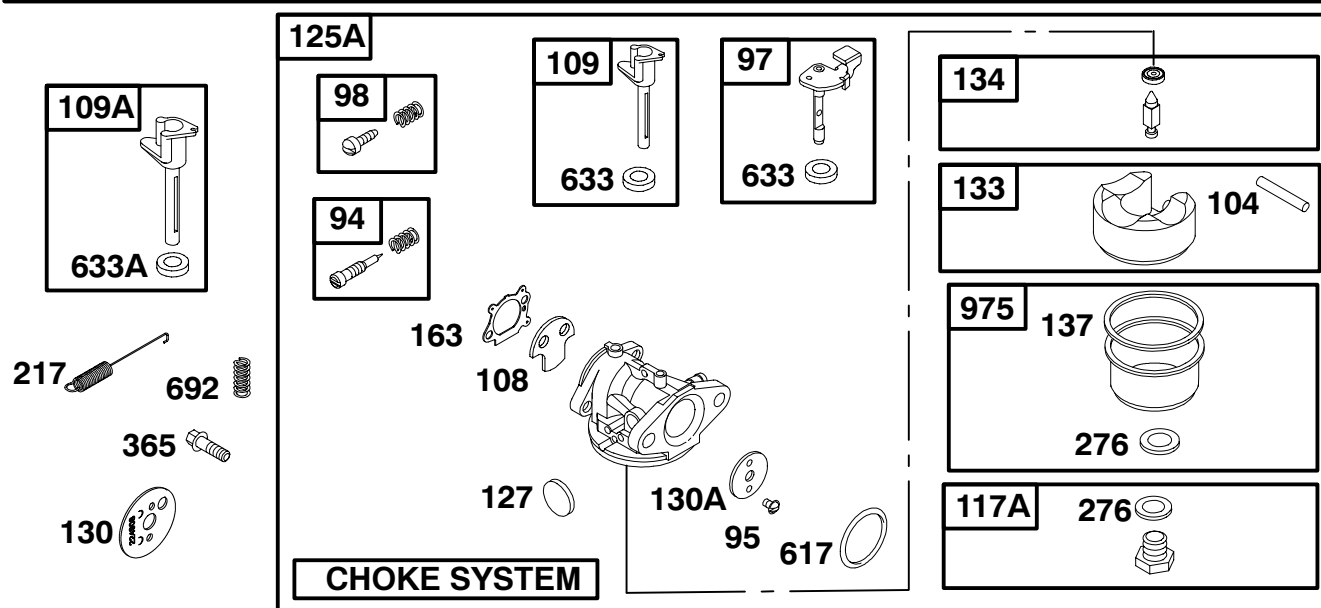
128800 to 128899



REF. NO.	PART NO.	DESCRIPTION	REF. NO.	PART NO.	DESCRIPTION	REF. NO.	PART NO.	DESCRIPTION
125A	498965	Carburetor (Choke System) (Used After Code Date 96060200). ----- Note ----- 497501 Carburetor (Choke System) (Used Before Code Date 96060300).		499059	Carburetor (Choke System) Used on Type No(s). 0807, 0839, 0888, 1192, 1907, 1910, 1921, 1939, 1961, 1977, 2007, 2011, 2332, 2333, 2392,			2393, 2394, 2395, 2626, 2644, 2681, 3132, 3134, 3135, 3170, 4305, 4605, 4905, 4906.

- ★ Included in Engine Gasket Set-See Ref. No. 358.
- Included in Carburetor Overhaul Kit-See Ref. No. 121.

- ◆ Included in Carburetor Gasket Set-See Ref. No. 977.
- ◆ Included in Valve Gasket Set-See Ref. No. 1095.

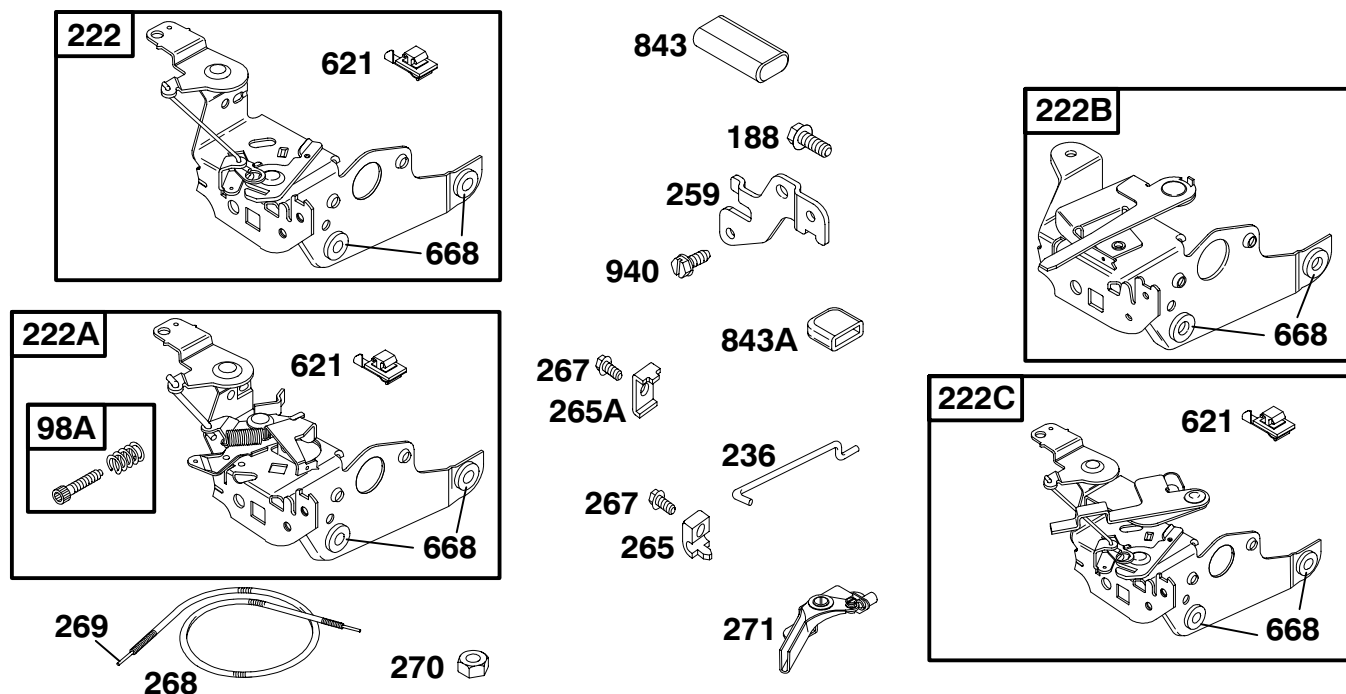


REF. NO.	PART NO.	DESCRIPTION	REF. NO.	PART NO.	DESCRIPTION	REF. NO.	PART NO.	DESCRIPTION		
94	493765	Kit-Idle Mixture			1192, 1907, 1910,	133	398187	Float-Carburetor		
95	94098	Screw (Throttle Valve)			1921, 1939, 1961, 2007, 2011, 2332, 2333, 2392, 2393,	134	●398188	Kit-Needle/Seat		
97	493267	Shaft-Throttle			2394, 2395, 2626,	137	●◆693981	Gasket-Float Bowl		
98	398185	Kit-Idle Speed			2644, 2681, 3132,	163	★●◆272653	Gasket-Air Cleaner		
104	●691242	Pin-Float Hinge			3134, 3135, 3170,	217	262749	Spring-Choke Return		
108	691182	Valve-Choke			4305, 4605, 4905,	276	●◆271716	Washer-Sealing		
109	494218	Shaft-Choke			4906.	365	94840	Screw (Carburetor)		
109A	498593	Shaft-Choke Used on Type No(s). 0807, 0839, 0888, 1192, 1907, 1910, 1921, 1939, 1961, 2007, 2011, 2332, 2333, 2392, 2393, 2394, 2395, 2626, 2644, 2681, 3132, 3134, 3135, 3170, 4305, 4605, 4905, 4906.			498981 Jet-Main (High Altitude) (Used After Code Date 96060200). 494870 Jet-Main (High Altitude) (Used Before Code Date 96060300). 498975 Jet-Main (High Altitude) Used on Type No(s). 0807, 0839, 0888, 1192, 1907, 1910, 1921, 1939, 1961, 2332, 2333, 2392, 2393, 2394, 2395, 2626, 2644, 3132, 3135, 3170, 4305, 4605, 4905, 4906.			617	●◆270344	O-Ring Seal (Intake Manifold)
117A	498977	Jet-Main (Standard) (Used After Code Date 96060200). ----- Note ----- 493637 Jet-Main (Standard) (Used Before Code Date 96060300). 498978 Jet-Main (Standard) Used on Type No(s). 0807, 0839, 0888,	125A		Carburetor (See Previous Page)			633	●◆691321	Seal-Throttle Shaft
			127	●694468	Plug-Welch			633A	●◆693867	Seal-Choke/Throttle Shaft Used on Type No(s). 0807, 0839, 0888, 1192, 1907, 1910, 1921, 1939, 1961, 2007, 2011, 2332, 2333, 2392, 2393, 2394, 2395, 2626, 2644, 2681, 3132, 3134, 3135, 3170, 4305, 4605, 4905, 4906.
			130	691203	Valve-Throttle			692	690572	Spring-Detent Used on Type No(s). 0807, 0839, 0888, 1192, 1910, 1921, 1961, 2332, 2333, 2393, 4305, 4605, 4905, 4906.
			130A	691181	Valve-Throttle			975	493640	Bowl-Float

★ Included in Engine Gasket Set-See Ref. No. 358.
● Included in Carburetor Overhaul Kit-See Ref. No. 121.

◆ Included in Carburetor Gasket Set-See Ref. No. 977.
Included in Valve Gasket Set-See Ref. No. 1095.

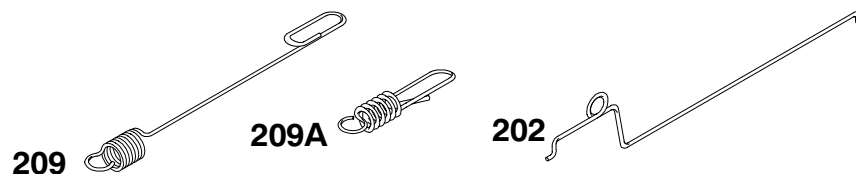
128800 to 128899



REF. NO.	PART NO.	DESCRIPTION	REF. NO.	PART NO.	DESCRIPTION	REF. NO.	PART NO.	DESCRIPTION
98A	493280	Kit-Idle Speed	265	213146	Clamp-Casing	269	26633	Casing-Control Wire (78" Long, Cut to Required Length)
188	94644	Screw (Control Bracket)	265A	221535	Clamp-Casing			----- Note -----
222	497203	Bracket-Control (Primer Remote/Manual Friction)	267	94882	Screw (Casing Clamp)			26099 Casing-Control Wire
222A	495975	Bracke-Control (Remote Choke A Matic) (NonCompliance)	268	65616	Casing-Control Wire (72" Long, Cut to Required Length)			(54" Long, Cut to Required Length)
		----- Note -----			691072 Casing-Control Wire (48" Long, Cut to Required Length)	270	63426	Nut (Control Wire Casing)
		690839 Bracket-Control (Manual Friction Choke A Matic) Used on Type No(s). 1132, 1193.				271	290568	Lever-Control
222B	692982	Bracket-Control				621	396847	Switch-Stop
222C	692150	Bracket-Control				668	★493823	Spacer (Includes 2)
236	262461	Link-Lockout				843	280149	Sleeve-Lever (Choke)
259	691223	Bracket-Casing Clamp				843A	272616	Sleeve-Lever (Speed Control)
						940	94882	Screw (Casing Clamp Bracket)

★ Included in Engine Gasket Set-See Ref. No. 358.
● Included in Carburetor Overhaul Kit-See Ref. No. 121.

◆ Included in Carburetor Gasket Set-See Ref. No. 977.
Included in Valve Gasket Set-See Ref. No. 1095.

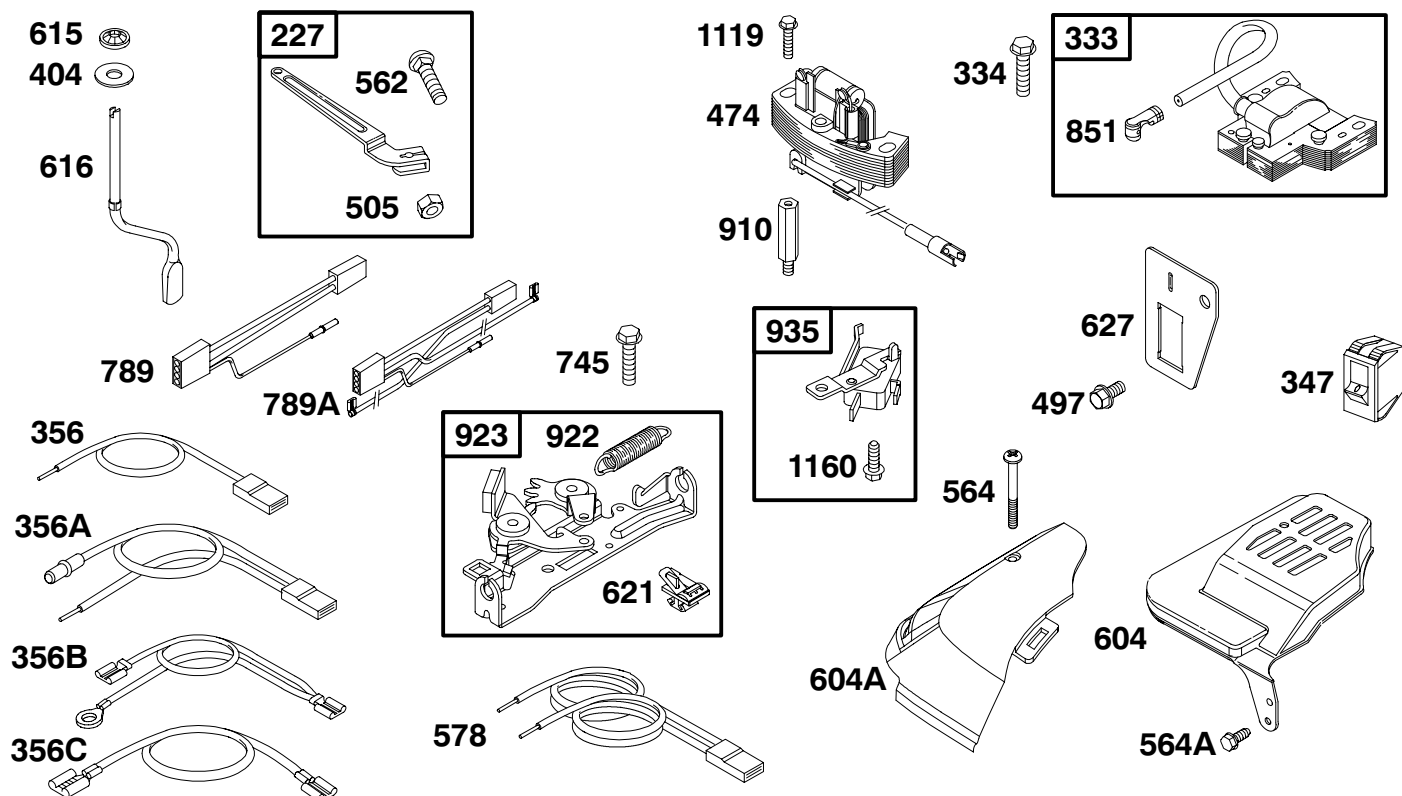


REF. NO.	PART NO.	DESCRIPTION	REF. NO.	PART NO.	DESCRIPTION	REF. NO.	PART NO.	DESCRIPTION
202	262579	Link-Mechanical Governor			2005, 2008, 2308, 2315, 2328, 2344, 2388, 2391, 2608, 2642, 2915, 2920, 3131.	209A	262666	Spring-Governor
209	691292	Spring-Governor			263047 Spring-Governor			----- Note -----
		----- Note -----			Used on Type No(s).			690568 Spring-Governor
		691291 Spring-Governor			Used on Type No(s).			Used on Type No(s).
		Used on Type No(s).			1325, 1326, 1544, 1575, 2677, 2678, 3131.			0832, 1132, 1193.
		1994, 2015, 2105, 2395, 3132, 3135, 3170.			263144 Spring-Governor			691275 Spring-Governor
		263042 Spring-Governor			Used on Type No(s).			Used on Type No(s).
		Used on Type No(s).			1910, 1961, 2332, 2333, 2393, 2395, 2626, 4305, 4605, 4905, 4906.			0211, 0212, 0515, 0531.
		0819, 0861, 1111, 1112, 1119, 1515, 1533, 2311, 2312, 2319, 2676, 3168.			263151 Spring-Governor			262659 Spring-Governor
		263044 Spring-Governor			Used on Type No(s).			Used on Type No(s).
		Used on Type No(s).			0807, 0839, 0888, 1192, 1921, 2392, 2394.			0100, 0127, 0157, 0208, 0408, 0410, 0508, 0514.
		0600, 0625, 0627, 0628, 0632, 0657, 0659, 0668, 0808, 0829, 0830, 0840, 0872, 0889, 0890, 0893, 0898, 0905, 0908, 1108, 1115, 1128, 1130, 1188, 1191, 1508, 1519, 1520, 1521, 1522, 1534, 1538, 1539, 1542, 1572, 1700, 1725, 1727, 1732, 1757, 1762, 1768, 1908, 1929, 1933, 1940, 1974, 1979, 1990, 1993, 1998,			690241 Spring-Governor			262662 Spring-Governor
					Used on Type No(s).			Used on Type No(s).
					0807, 0839, 0888, 1192, 1907, 1921, 1977, 2007, 2011, 2016, 2394, 2681, 3134.			0213, 0214.
								262664 Spring-Governor
								Used on Type No(s).
								0818, 0835.
								262665 Spring-Governor
								Used on Type No(s).
								0411, 0412, 0519, 0520, 0521, 0522, 0525, 1525.
								690569 Spring-Governor
								Used on Type No(s).
								0815.

★ Included in Engine Gasket Set-See Ref. No. 358.
● Included in Carburetor Overhaul Kit-See Ref. No. 121.

◆ Included in Carburetor Gasket Set-See Ref. No. 977.
Included in Valve Gasket Set-See Ref. No. 1095.

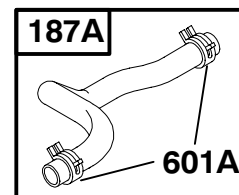
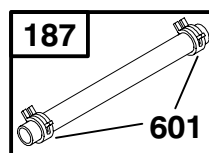
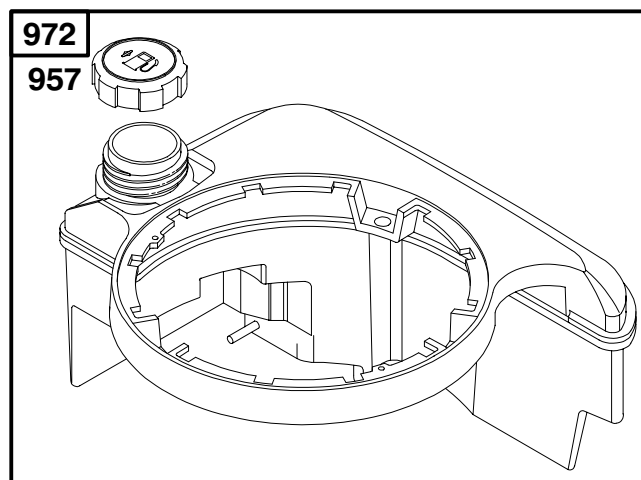
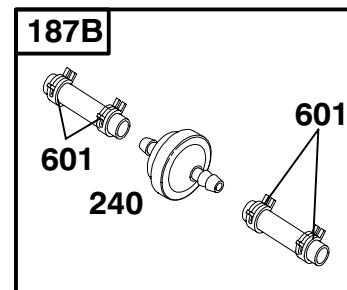
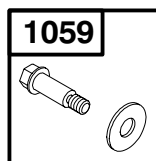
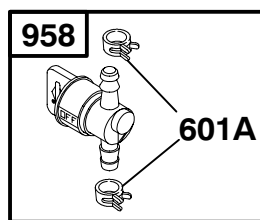
128800 to 128899



REF. NO.	PART NO.	DESCRIPTION	REF. NO.	PART NO.	DESCRIPTION	REF. NO.	PART NO.	DESCRIPTION
227	690783	Lever-Governor Control	604	225103	Cover-Control	789	695551	Harness-Wiring (Used After Code Date 00040600)
333	802574	Armature-Magneto	604A	691344	Cover-Control			----- Note -----
334	94731	Screw (Magneto Armature)	615	690340	Shaft-Retainer Governor			690790 Harness-Wiring (Used Before Code Date 00040700)
347	691396	Switch-Rocker	616	691306	Crank-Governor (Used After Code Date 96090100).	789A	695552	Harness-Wiring (Used After Code Date 00040600)
356	692390	Wire-Stop			----- Note -----			----- Note -----
356A	496381	Wire-Stop			691308 Crank-Governor Used on Type No(s). 0807, 0839, 0888, 1192, 1907, 1910, 1939, 1961, 1977, 2007, 2011, 2016, 2332, 2333, 2392, 2393, 2394, 2626, 2644, 2681, 3132, 3134, 3170, 4305, 4605, 4905, 4906.			691372 Harness-Wiring (Used Before Code Date 00040700)
356B	690650	Wire-Stop	621	396847	Switch-Stop	851	493880	Terminal-Sparkplug
356C	693010	Wire-Stop	627	692872	Bracket-Stop Switch	910	691094	Stud (Alternator)
404	690272	Washer (Governor Crank)	745	94512	Screw (Brake)	922	262640	Spring-Brake
505	231082	Nut (Governor Control Lever)				923	493442	Brake
562	691119	Bolt (Governor Control Lever)				935	499421	Switch-Interlock
564	691142	Screw (Control Cover)				1119	94512	Screw (Alternator)
564A	691683	Screw (Control Cover)				1160	93758	Screw (Interlock Switch)
578	398153	Wire Assembly						

★ Included in Engine Gasket Set-See Ref. No. 358.
● Included in Carburetor Overhaul Kit-See Ref. No. 121.

◆ Included in Carburetor Gasket Set-See Ref. No. 977.
Included in Valve Gasket Set-See Ref. No. 1095.

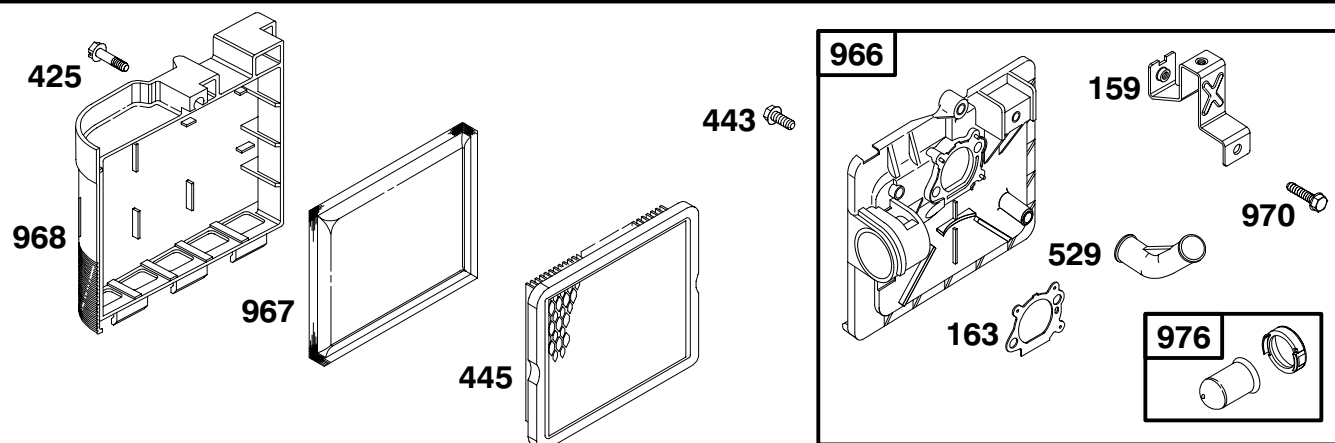


REF. NO.	PART NO.	DESCRIPTION	REF. NO.	PART NO.	DESCRIPTION	REF. NO.	PART NO.	DESCRIPTION
187	298049	Line-Fuel (15" Long, Cut to Required Length) ----- Note ----- 296004 Line-Fuel (23" Long, Cut to Required Length) Used on Type No(s). 2105.	187A	691371	Line-Fuel (Molded)	601A	93807	Clamp-Hose (Black)
			187B	498171	Line-Fuel	670A	280512	Spacer-Fuel Tank
			190	94511	Screw (Fuel Tank)	957	397974	Cap-Fuel Tank
			240	298090	Filter-Fuel	958	494768	Valve-Fuel Shut Off
			601	93053	Clamp-Hose (Green)	972	495224	Tank-Fuel
						1059	398540	Kit-Screw/Washer

★ Included in Engine Gasket Set-See Ref. No. 358.
● Included in Carburetor Overhaul Kit-See Ref. No. 121.

◆ Included in Carburetor Gasket Set-See Ref. No. 977.
Included in Valve Gasket Set-See Ref. No. 1095.

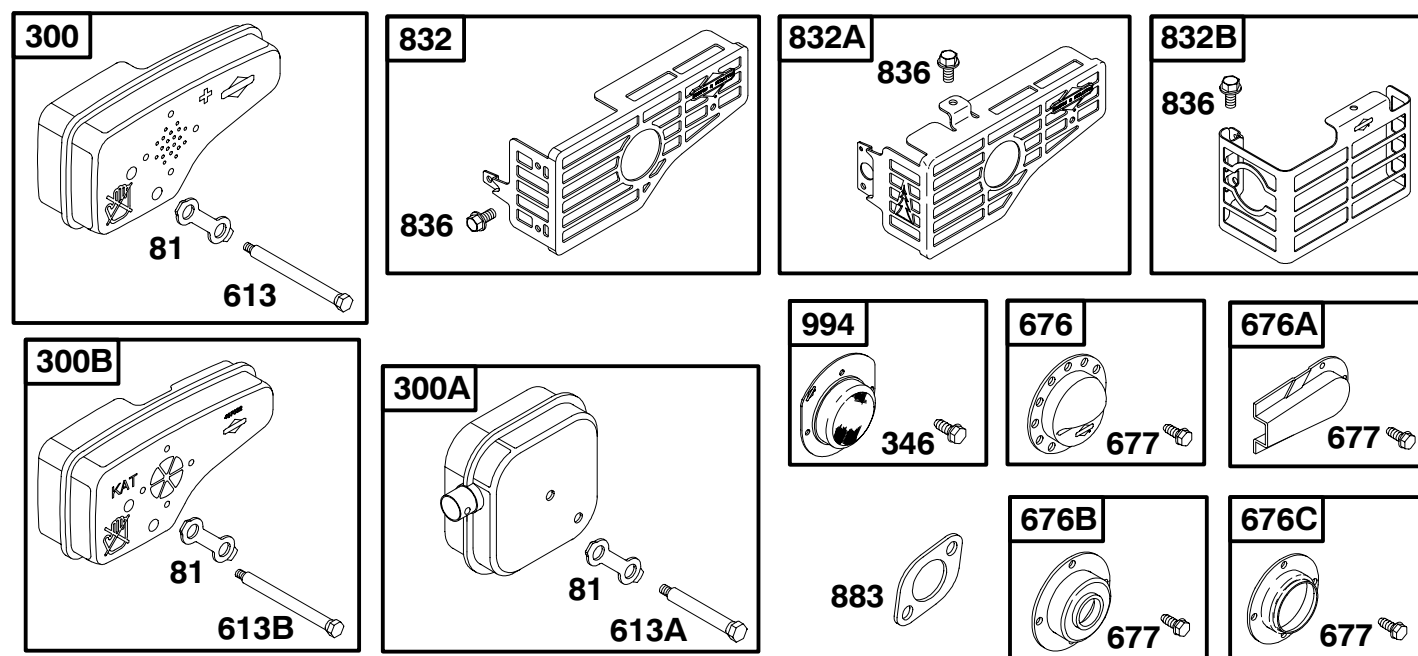
128800 to 128899



REF. NO.	PART NO.	DESCRIPTION	REF. NO.	PART NO.	DESCRIPTION	REF. NO.	PART NO.	DESCRIPTION
159	224815	Bracket-Air Cleaner Primer	445	491588	Filter-Air Cleaner Cartridge	976	694395	Primer-Carburetor (Used After Code Date 99103100).
163★◆	272653	Gasket-Air Cleaner	529	281299	Grommet	----- Note ----- 496115 Primer-Carburetor (Used Before Code Date 99110100).		
425	94872	Screw (Air Cleaner Cover)	966	496116	Base-Air Cleaner Primer			
443	94873	Screw (Air Cleaner Primer Base)	967	493537	Filter-Pre Cleaner			
			968	281340	Cover-Air Cleaner			
			970	94749	Screw			

★ Included in Engine Gasket Set-See Ref. No. 358.
 ● Included in Carburetor Overhaul Kit-See Ref. No. 121.

◆ Included in Carburetor Gasket Set-See Ref. No. 977.
 Included in Valve Gasket Set-See Ref. No. 1095.

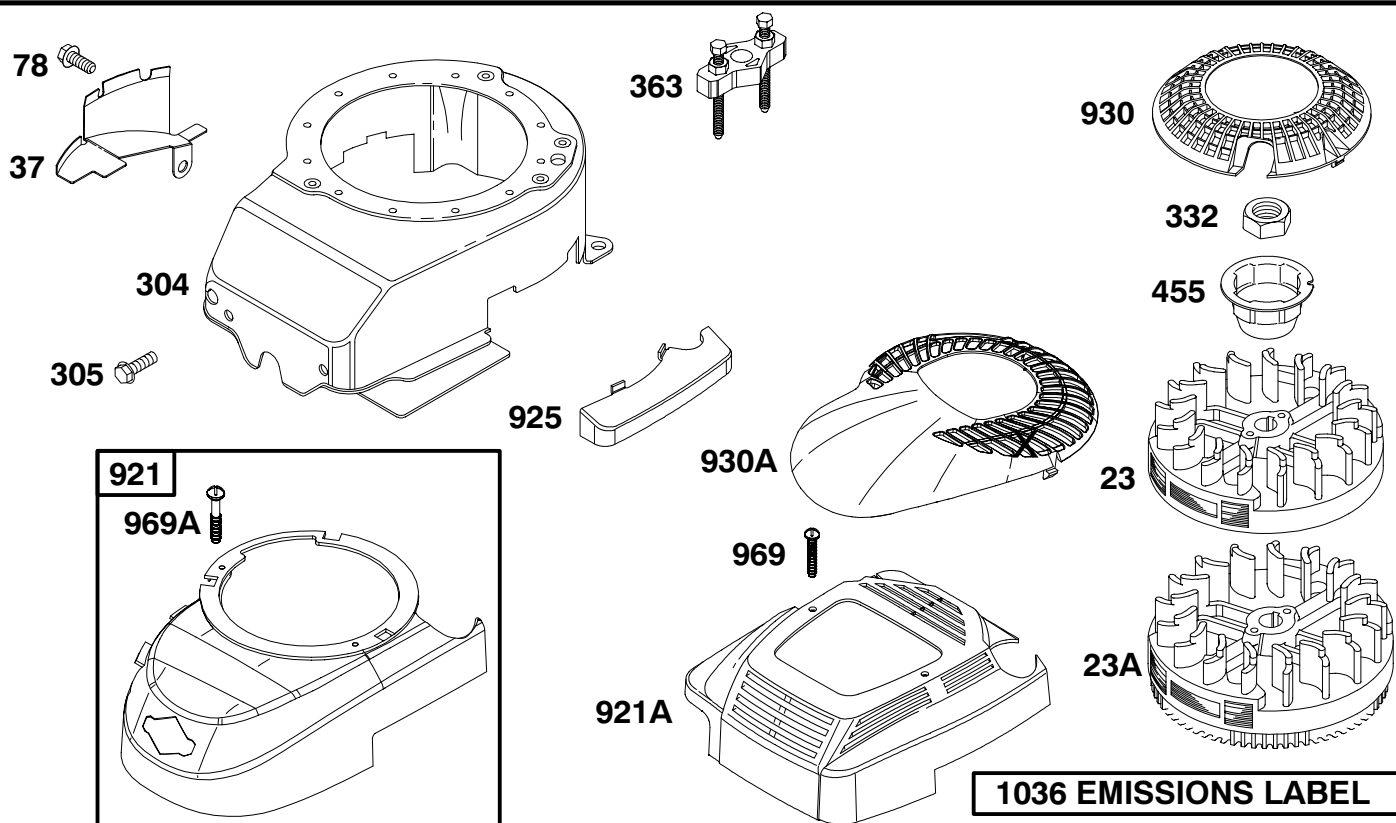


REF. NO.	PART NO.	DESCRIPTION	REF. NO.	PART NO.	DESCRIPTION	REF. NO.	PART NO.	DESCRIPTION
81	223664	Lock-Muffler Screw	613A	94615	Screw (Exhaust Muffler)	677	94896	Screw (Muffler Deflector)
300	496106	Muffler (Tuned)	613B	691114	Screw (Exhaust Muffler)	832	499034	Guard-Muffler (Standard)
300A	494343	Muffler (Square Lo-Tone)	676	396548	Deflector-Muffler (Louvered)	832A	497683	Guard-Muffler (Catalyst)
300B	497681	Muffler (Catalyst)	676A	493871	Deflector-Muffler (Side Out Extended/Horseshoe)	832B	691424	Guard-Muffler (Square Lo-Tone)
346	94896	Screw (Spark Arrester)	676B	397931	Deflector-Muffler (Direct Out)	836	94874	Screw (Muffler Guard)
613	94231	Screw (Exhaust Muffler)	676C	497682	Deflector-Muffler (Direct Out for TUV)	883 ★	272253	Gasket-Exhaust
						994	398067	Arrestor-Spark

★ Included in Engine Gasket Set-See Ref. No. 358.
● Included in Carburetor Overhaul Kit-See Ref. No. 121.

◆ Included in Carburetor Gasket Set-See Ref. No. 977.
Included in Valve Gasket Set-See Ref. No. 1095.

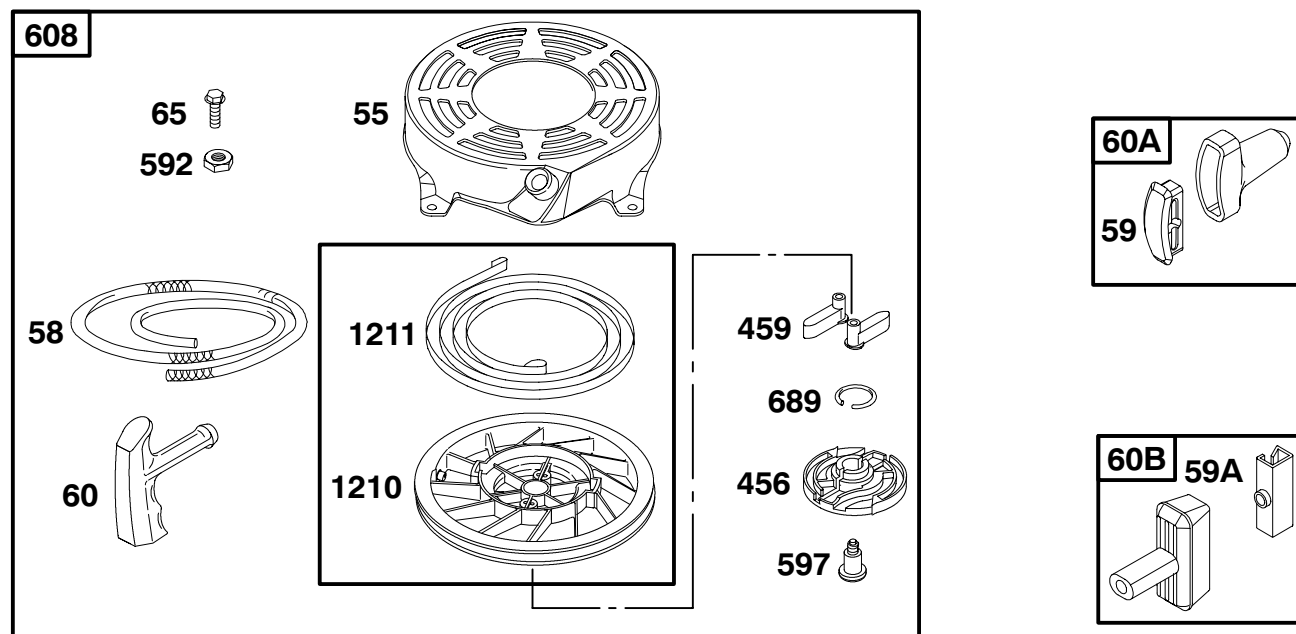
128800 to 128899



REF. NO.	PART NO.	DESCRIPTION	REF. NO.	PART NO.	DESCRIPTION	REF. NO.	PART NO.	DESCRIPTION
23	492177	Flywheel (Rewind Starter)	304	493294	Housing-Blower (Used on Engines Without Band Brake)	969	94696	Screw (Blower Housing Cover)
23A	492175	Flywheel (Electric Starter)			----- Note -----	969A	691138	Screw (Blower Housing Cover)
		----- Note -----			493293 Housing-Blower (Used on Engines With Band Brake)	1036	695111	Label-Emissions (Used After Code Date 99093000).
		492893 Flywheel (Electric Starter) Used on Type No(s). 0807, 0832, 0888, 0892, 0906, 0910, 1124, 1125, 1126, 1127, 1132, 1192, 1193, 1367, 1907, 1933, 1957, 1982, 1994, 2007, 2011, 2015, 2016, 2105, 2316, 2332, 2333, 2392, 2394, 2395, 2644, 2677, 2678, 3131, 3132, 3135, 3170.	305	691108	Screw (Blower Housing)			----- Note -----
37	694086	Guard-Flywheel	332	94877	Nut (Flywheel)			694458 Label-Emissions (Used After Code Date 98123100 and Before Code Date 99100100).
78	691108	Screw (Flywheel Guard)	363	19069	Flywheel Puller			499341 Label-Emissions (Used After Code Date 97052500 and Before Code Date 99010100).
			455	691219	Cup-Flywheel			690104 Label-Emissions (Used Before Code Date 97052600).
			921	691468	Cover-Blower Housing			
			921A	497233	Cover-Blower Housing			
			925	690595	Cover-Linkage			
			930	281136	Guard-Rewind (Round)			
			930A	691345	Guard-Rewind (Tear Drop)			

★ Included in Engine Gasket Set-See Ref. No. 358.
● Included in Carburetor Overhaul Kit-See Ref. No. 121.

◆ Included in Carburetor Gasket Set-See Ref. No. 977.
Included in Valve Gasket Set-See Ref. No. 1095.

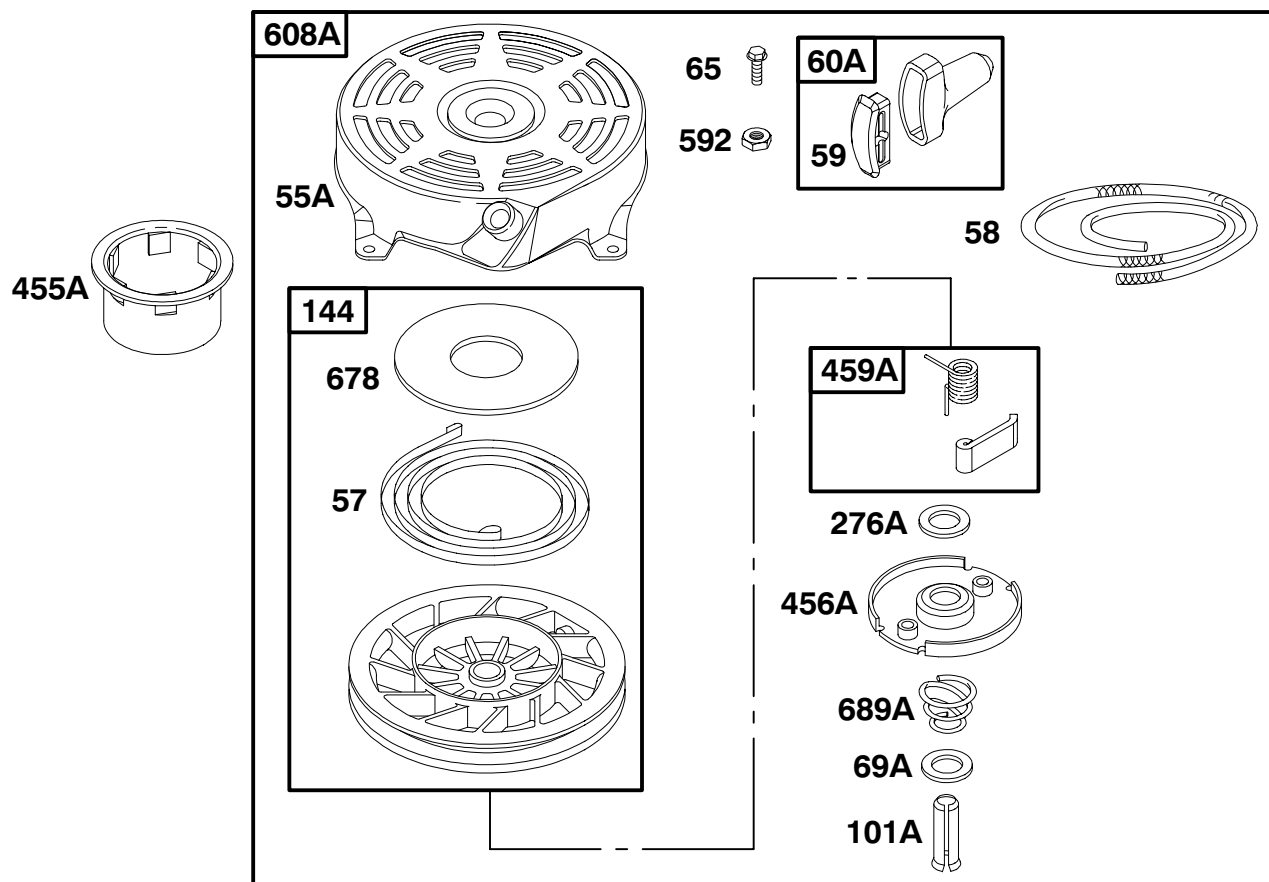


REF. NO.	PART NO.	DESCRIPTION	REF. NO.	PART NO.	DESCRIPTION	REF. NO.	PART NO.	DESCRIPTION
55	691421	Housing-Rewind Starter	60B	494212	Grip-Starter Rope	608	497680	Starter-Rewind
58	280399	Rope-Starter (Cut To Required Length)	65	94904	Screw (Rewind Starter)	689	691855	Spring-Friction
59	396892	Insert-Grip	456	281503	Plate-Pawl Friction	1210	498144	Pulley/Spring Assembly (Pulley)
59A	692594	Insert-Grip	459	281505	Pawl-Ratchet	1211	498144	Pulley/Spring Assembly (Spring)
60	281434	Grip-Starter Rope	592	94908	Nut (Rewind Starter)			
60A	393152	Grip-Starter Rope	597	94943	Screw (Pawl Friction Plate)			

★ Included in Engine Gasket Set-See Ref. No. 358.
 ● Included in Carburetor Overhaul Kit-See Ref. No. 121.

◆ Included in Carburetor Gasket Set-See Ref. No. 977.
 Included in Valve Gasket Set-See Ref. No. 1095.

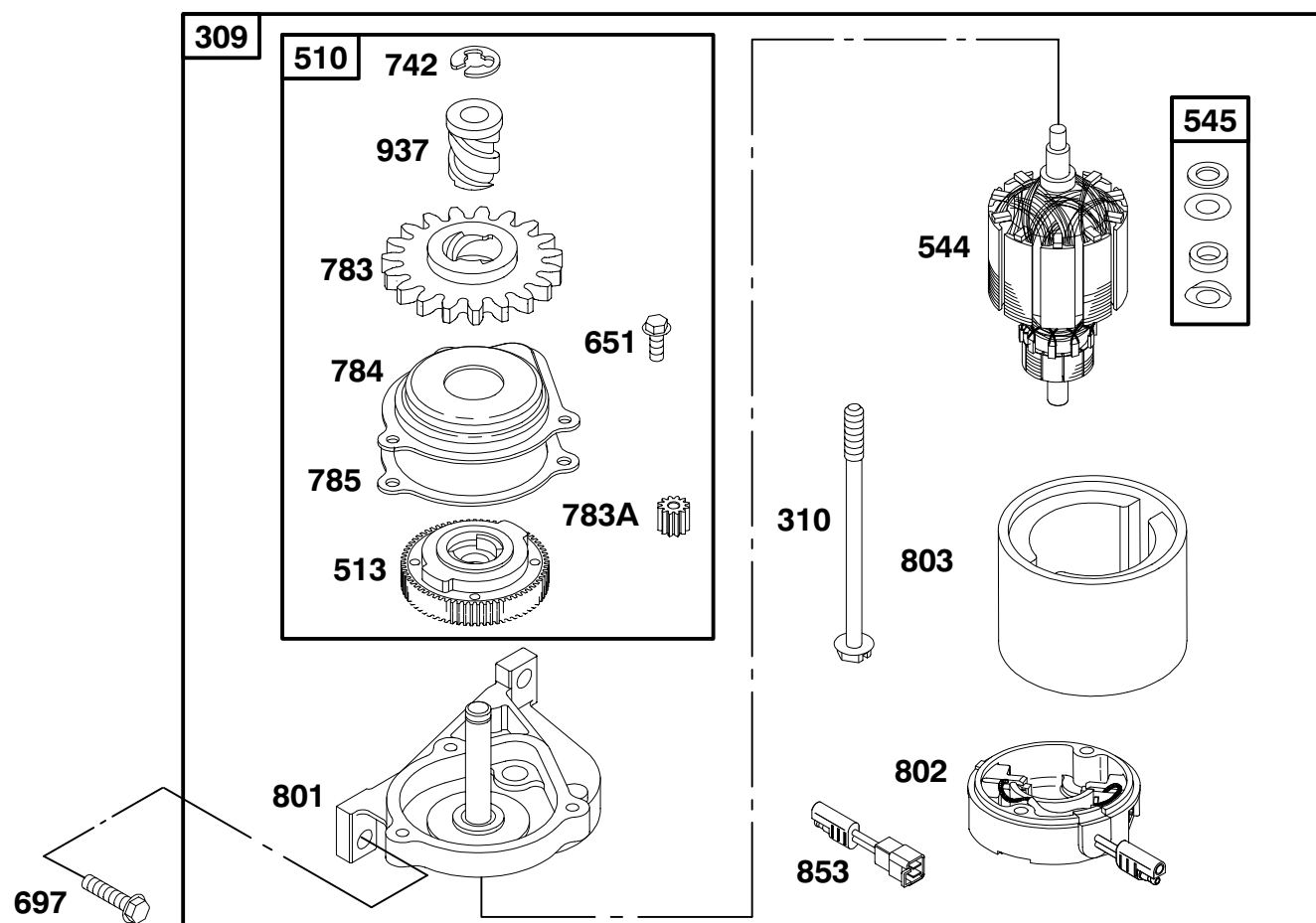
128800 to 128899



REF. NO.	PART NO.	DESCRIPTION	REF. NO.	PART NO.	DESCRIPTION	REF. NO.	PART NO.	DESCRIPTION
55A	492831	Housing-Rewind Starter	65	94904	Screw (Rewind Starter)	455A	224250	Cup-Flywheel
57	491889	Spring-Rewind Starter	69A	224322	Washer (Starter Clutch)	456A	224321	Plate-Pawl Friction
58	280399	Rope-Starter (Cut To Required-Length)	101A	262626	Pin-Shaft	459A	492833	Pawl-Ratchet
59	396892	Insert-Grip	144	493824	Pulley/Spring Assembly	592	94908	Nut (Rewind Starter)
60A	393152	Grip-Starter Rope	276A	280973	Washer-Sealing	608A	497598	Starter-Rewind
						678	224278	Spacer-Rewind
						689A	262625	Spring-Friction

★ Included in Engine Gasket Set-See Ref. No. 358.
 ● Included in Carburetor Overhaul Kit-See Ref. No. 121.

◆ Included in Carburetor Gasket Set-See Ref. No. 977.
 Included in Valve Gasket Set-See Ref. No. 1095.



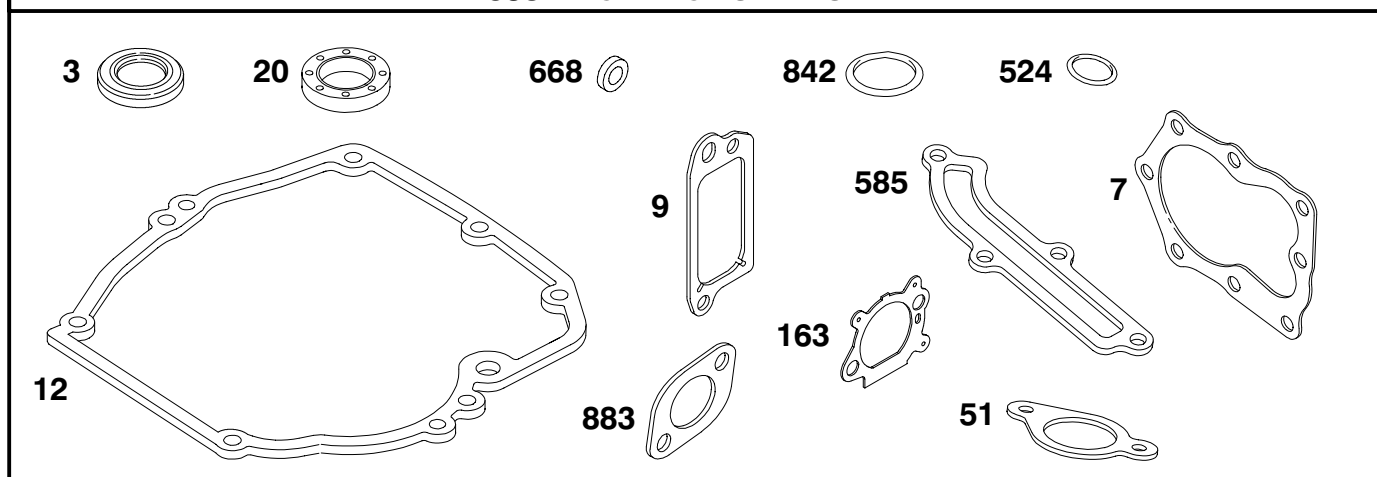
REF. NO.	PART NO.	DESCRIPTION	REF. NO.	PART NO.	DESCRIPTION	REF. NO.	PART NO.	DESCRIPTION
309	695550	Motor-Starter (Used After Code Date 00040600) ----- Note ----- 691376 Motor-Starter (Used Before Code Date 00040700)	545	492919	Washer Set (Starter Motor)	802	695267	Cap-End (Used After Code Date 00040600). ----- Note ----- 690787 Cap-End (Used Before Code Date 00040700).
310	692327	Bolt (Starter Motor)	651	690345	Screw (Starter Gear Cover)	803	695266	Housing-Starter (Used After Code Date 00040600). ----- Note ----- 690785 Housing-Starter (Used Before Code Date 00040700).
510	494147	Drive-Starter	697	691127	Screw (Drive Cap)	853	695268	Adapter-Wire
513	692358	Clutch-Drive	742	93941	Retainer-E Ring	937	691325	Spline-Starter
544	690786	Armature-Starter	783	691918	Gear-Pinion			
			783A	691269	Gear-Pinion			
			784	692341	Cover-Starter Gear			
			785	692352	Gasket-Starter Cover			
			801	690782	Cap-Drive			

★ Included in Engine Gasket Set-See Ref. No. 358.
● Included in Carburetor Overhaul Kit-See Ref. No. 121.

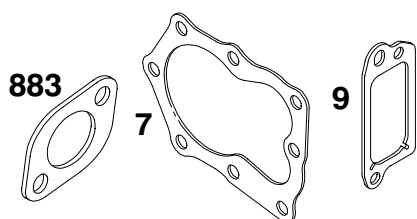
◆ Included in Carburetor Gasket Set-See Ref. No. 977.
Included in Valve Gasket Set-See Ref. No. 1095.

128800 to 128899

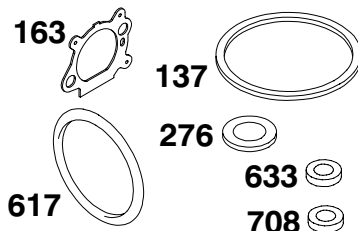
358 ENGINE GASKET SET



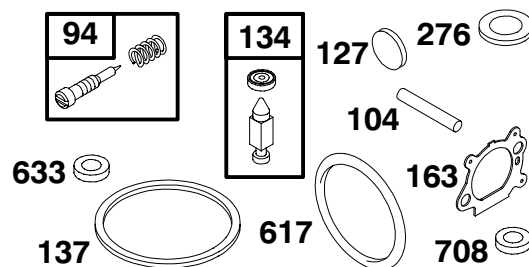
1095 VALVE GASKET SET



977 CARBURETOR GASKET SET



121 CARBURETOR OVERHAUL KIT



REF. NO.	PART NO.	DESCRIPTION	REF. NO.	PART NO.	DESCRIPTION	REF. NO.	PART NO.	DESCRIPTION
3	★299819	Seal-Oil (Magneto Side)	121	498260	Kit-Carburetor Overhaul	633 ♦♦693867		Seal-Choke/Throttle Shaft
7	★ 272916	Gasket-Cylinder Head	127	●694468	Plug-Welch			Used on Type No(s).
9	★ 272481	Gasket-Breather	134	●398188	Kit-Needle/Seat			0807, 0839, 0888,
12	★272198	Gasket-Crankcase	137 ♦♦693981		Gasket-Float Bowl			1192, 1907, 1910,
20	★399781	Seal-Oil (PTO Side)	163 ♦♦272653		Gasket-Air Cleaner			1921, 1939, 1961,
51	★272199	Gasket-Intake	276 ♦♦271716		Washer-Sealing			2007, 2011, 2332,
94	●493765	Kit-Idle Mixture	358	497316	Gasket Set-Engine			2333, 2392, 2393,
104	●691242	Pin-Float Hinge	524	★280966	Seal-Dipstick Tube			2394, 2395, 2626,
			585	★272238	Gasket-Breather Passage			2644, 2681, 3132,
			617 ♦♦270344		O-Ring Seal (Intake Manifold)			3134, 3135, 3170,
								4305, 4605, 4905,
								4906.
						668	★493823	Spacer (Includes 2)
						708 ♦♦691321		Seal-Throttle Shaft
						842	★280393	O-Ring Seal
						883	★ 272253	Gasket-Exhaust
						977	498261	Gasket Set-Carburetor
						1095	498528	Gasket Set-Valve

★ Included in Engine Gasket Set-See Ref. No. 358.

● Included in Carburetor Overhaul Kit-See Ref. No. 121.

♦ Included in Carburetor Gasket Set-See Ref. No. 977.

Included in Valve Gasket Set-See Ref. No. 1095.