

10D900 to 10D999

Illustrated Parts List

Model Series

10D900 to 10D999

TYPE NUMBERS

0116, 0117, 0118,
0119, 0120, 0121,
0122, 0127, 0130,
0131.

TO FIND

THE CORRECT NUMBER OF THE PART YOU NEED: FOLLOW THE INSTRUCTIONS BELOW

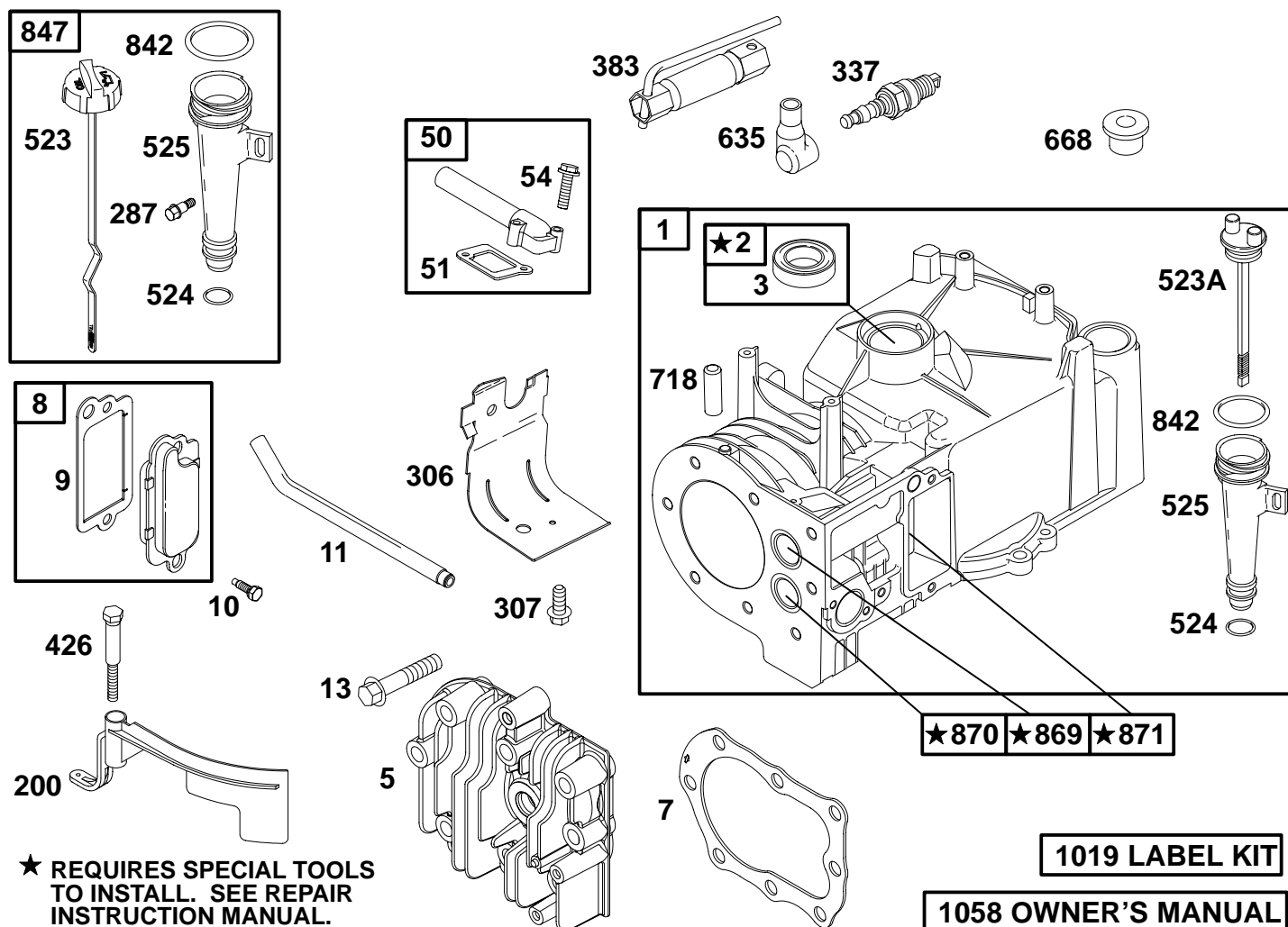
- A. Refer to Engine Model, Type and Code Number that is stamped on the blower housing of engine. Engine type numbers such as 0123 01 are listed only as 0123 in most instances. The two digits (01 or 02, etc.) to the right of the space may be required for more accurate parts identification in some instances. Select the Illustrated Parts List covering the correct Model Series and Type Number.
- B. Refer to the Illustrations and compare the original part with Illustration. The number next to the illustration is the Reference Number. Assemblies include all parts shown in frames. All parts shown in assembly frames having individual reference numbers can be purchased separately.
- C. After the Reference Number has been identified, refer to the Numerical text, where Reference and Primary Part Number are listed. **THE PRIMARY PART IS USED ON ALL TYPE NUMBERS EXCEPT THOSE TYPE NUMBERS UNDER "NOTE."**
- D. If a "Note" appears below the Primary Part Number, it means that this part differs from the Primary Part for certain types. If your Type number is listed under "Note," order the part referred to at the "Note."
- E. If your Engine Type Number does not appear after any part number listed under "Note," use the Primary Part Number.
- F. For Engine Type Numbers not covered by this book, check other Parts Lists having the same engine model or contact your source of supply.

PRINTED IN U.S.A.



COPYRIGHT by BRIGGS & STRATTON CORPORATION
All rights reserved. No part of this material may be reproduced or transmitted, in any form or by any means, electronic or mechanical, including photocopying, recording or by any information storage and retrieval system, without permission in writing from Briggs & Stratton Corporation.

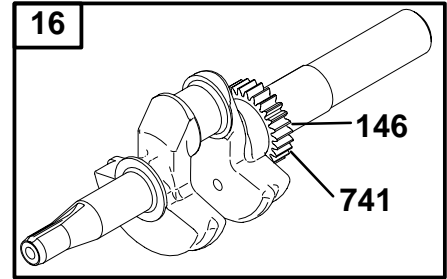
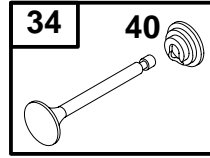
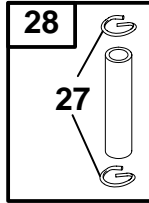
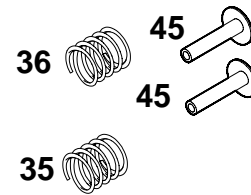
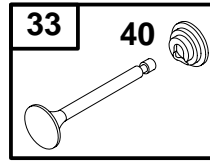
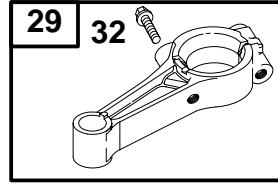
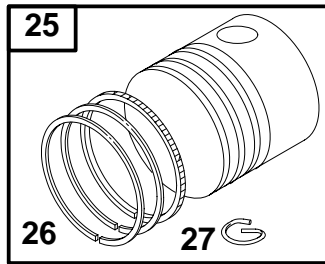
10D900 to 10D999



REF. NO.	PART NO.	DESCRIPTION	REF. NO.	PART NO.	DESCRIPTION	REF. NO.	PART NO.	DESCRIPTION
1	399164	Cylinder Assembly	287	691002	Screw (Dipstick Tube)	869	211172	Seat-Valve (Intake)
2	399269	Kit-Bushing/Seal (Magneto Side)	306	690400	Shield-Cylinder	870	211291	Seat-Valve (Exhaust)
3	★299819	Seal-Oil (Magneto Side)	307	690345	Screw (Cylinder Shield)	871	231348	Bushing-Valve Guide (Exhaust)
5	690386	Head-Cylinder	337	802592	Sparkplug	Note		
7	★Ø272694	Gasket-Cylinder Head	383	89838	Wrench-Sparkplug	63709 Bushing-Valve Guide (Intake)		
8	495785	Breather Assembly	426	691107	Screw (Governor Blade)	1019	695140	Kit-Label
9	★Ø272602	Gasket-Breather	523	497968	Dipstick	1058	274262	Manual-Owner's (Emission Engine)
10	94719	Screw (Breather Assembly)	523A	281081	Dipstick	Note		
11	691245	Tube-Breather	524	★271485	Seal-Dipstick Tube	272308 Manual-Owner's (Non-Emission Engine)		
13	691697	Screw (Cylinder Head)	525	691320	Tube-Dipstick			
50	298775	Manifold-Intake	635	66538	Boot-Sparkplug			
51	★270345	Gasket-Intake	668	692889	Spacer			
54	93485	Screw (Intake Manifold)	718	230192	Pin-Locating			
200	281024	Blade-Governor	842	270920	Seal-O-Ring (Dipstick/Tube Assembly)			
			847	691440	Dipstick/Tube Assembly			

★ Included in Engine Gasket Set-Ref. No. 358.

Ø Included in Valve Gasket Set-Ref. No. 1095.

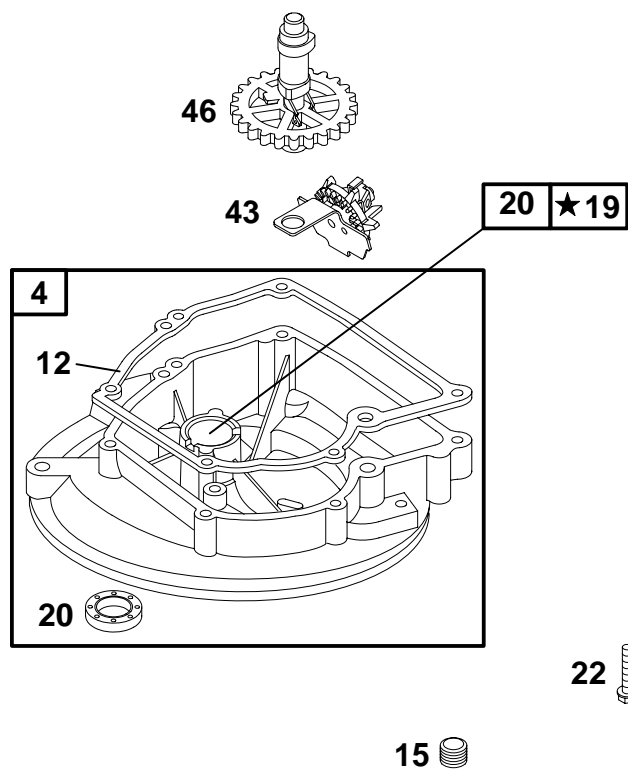
10D900 to 10D999

REF. NO.	PART NO.	DESCRIPTION	REF. NO.	PART NO.	DESCRIPTION	REF. NO.	PART NO.	DESCRIPTION
16	691471	Crankshaft —— Note —— 691472 Crankshaft Used on Type No(s). 0116, 0119, 0131.	26	498680	Ring Set (Standard) —— Note —— 498681 Ring Set (.010 O.S.) 498682 Ring Set (.020 O.S.) 498683 Ring Set (.030 O.S.)	33	296676	Valve—Exhaust
24	222698	Key—Flywheel	27	26026	Lock—Piston Pin	34	296677	Valve—Intake
25	498668	Piston Assembly (Standard) —— Note —— 498669 Piston Assembly (.010 O.S.) 498670 Piston Assembly (.020 O.S.) 498671 Piston Assembly (.030 O.S.)	28	298909	Pin—Piston (Standard) —— Note —— 298908 Pin—Piston (.005 O.S.)	35	260552	Spring—Valve (Intake)
			29	496792	Rod—Connecting	36	260552	Spring—Valve (Exhaust)
			32	94699	Screw (Connecting Rod)	40	93312	Retainer—Valve
						45	230173	Tappet—Valve
						146	499047	Key—Timing
						741	261533	Gear—Timing

★ Included in Engine Gasket Set—Ref. No. 358.

Ø Included in Valve Gasket Set—Ref. No. 1095.

10D900 to 10D999

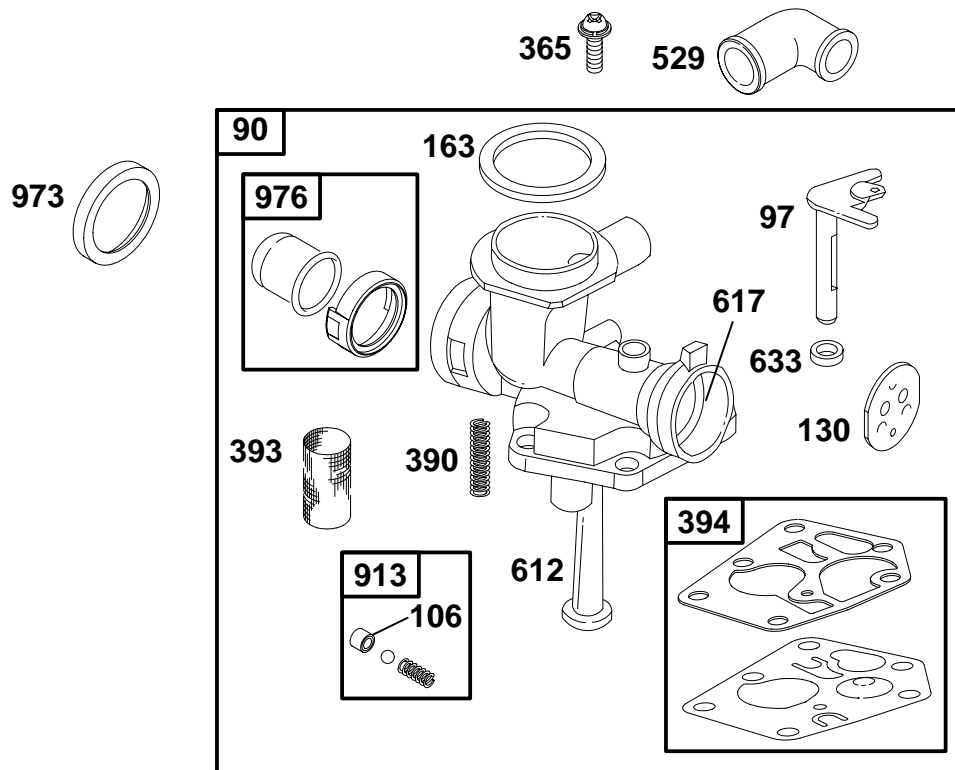


★ **REQUIRES SPECIAL TOOLS
TO INSTALL. SEE REPAIR
INSTRUCTION MANUAL.**

REF. NO.	PART NO.	DESCRIPTION	REF. NO.	PART NO.	DESCRIPTION	REF. NO.	PART NO.	DESCRIPTION
4	395384	Sump-Engine	15	94880	Plug-Oil Drain	22	94682	Screw
12	★270833	Gasket-Crankcase (.015 Thick, Standard)	19	293709	Kit-Bushing/Seal (PTO Side)	43	491688	Slinger-Governor/Oil
		Note	20	★391483	Seal-Oil (PTO Side)	46	493747	Camshaft
		★270895 Gasket- Crankcase (.005 Thick)						
		★270896 Gasket- Crankcase (.009 Thick)						

★ Included in Engine Gasket Set-Ref. No. 358.

Ø Included in Valve Gasket Set-Ref. No. 1095.

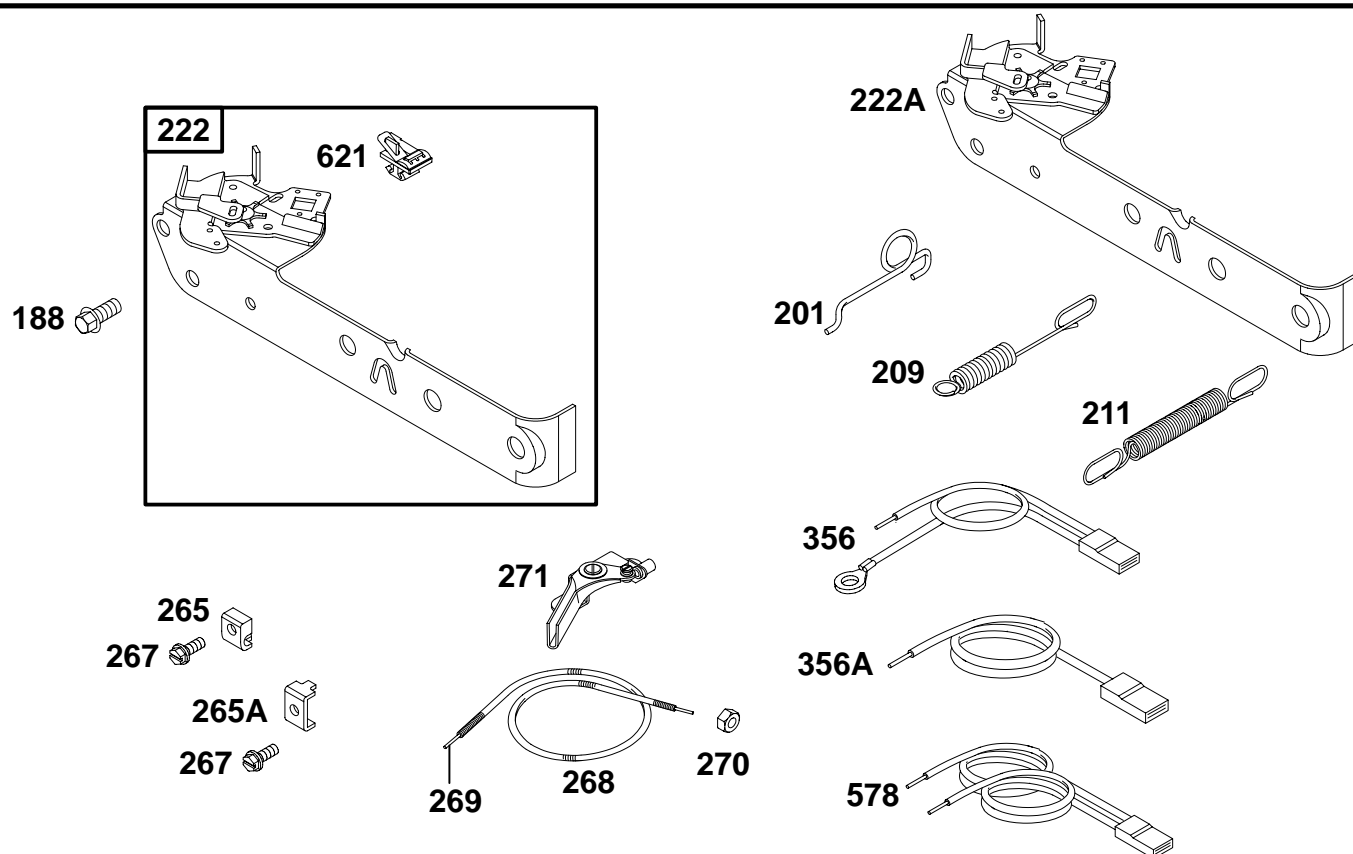


REF. NO.	PART NO.	DESCRIPTION	REF. NO.	PART NO.	DESCRIPTION	REF. NO.	PART NO.	DESCRIPTION
90	498811	Carburetor	390	262764	Spring-Choke Diaphragm	633	691321	Seal-Choke/Throttle Shaft
97	281437	Shaft-Throttle	393	262734	Screen-Carburetor	913	494409	Seat-Check Valve
106	280328	Seat-Inlet	394	495770	Diaphragm-Carburetor	973	691347	Ring-Trim (Primer Bulb)
130	691190	Valve-Throttle	529	67838	Grommet	976	494408	Primer-Carburetor
163	★271139	Gasket-Air Cleaner	612	496046	Tube-Pickup			
365	94924	Screw (Carburetor)	617	270344	Seal-O-Ring (Intake Manifold)			

★ Included in Engine Gasket Set-Ref. No. 358.

Ø Included in Valve Gasket Set-Ref. No. 1095.

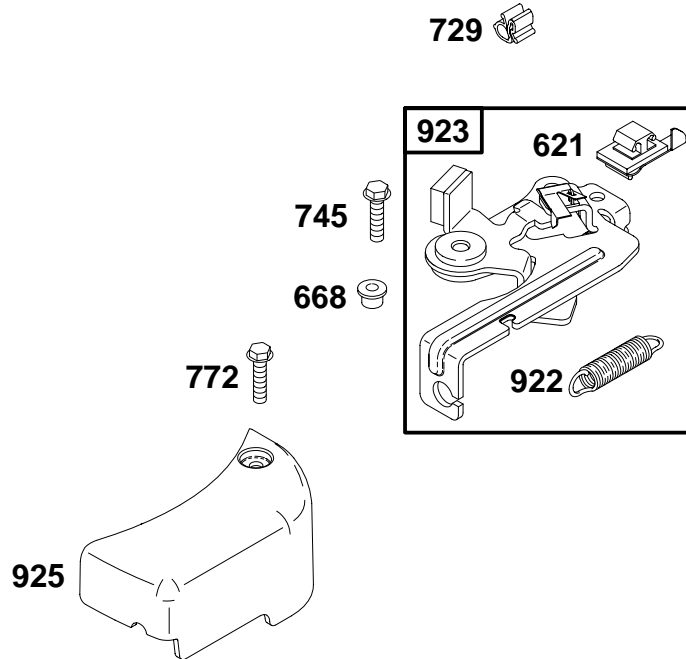
10D900 to 10D999



REF. NO.	PART NO.	DESCRIPTION	REF. NO.	PART NO.	DESCRIPTION	REF. NO.	PART NO.	DESCRIPTION
188	94786	Screw (Control Bracket)	211	263109	Spring-Governed Idle	269	26099	Wire-Control (Cut to Required Length)
201	262753	Link-Air Vane	222	691445	Bracket-Control	270	63426	Nut (Control Wire Casing)
209	691297	Spring-Governor	222A	691446	Bracket-Control Used on Type No(s). 0121, 0122.	271	290568	Lever-Control
	Note		265	213146	Clamp-Casing	356	398808	Wire-Stop (Single Stop and Ground)
	690251	Spring-Governor Used on Type No(s). 0117, 0121, 0122.	265A	221535	Clamp-Casing Used on Type No(s). 0116.	356A	692390	Wire-Stop (Single Stop)
	263116	Spring-Governor Used on Type No(s). 0120.	267	691044	Screw (Casing Clamp)	578	398153	Wire Assembly (Dual Stop)
	263122	Spring-Governor Used on Type No(s). 0131.	268	691072	Casing-Control Wire (Cut to Required Length)	621	396847	Switch-Stop

★ Included in Engine Gasket Set-Ref. No. 358.

Ø Included in Valve Gasket Set-Ref. No. 1095.

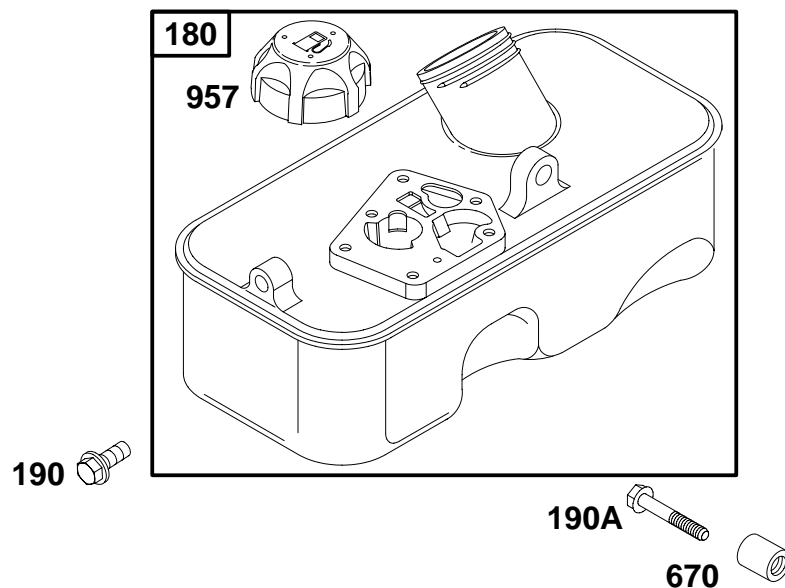


REF. NO.	PART NO.	DESCRIPTION	REF. NO.	PART NO.	DESCRIPTION	REF. NO.	PART NO.	DESCRIPTION
621	396847	Switch-Stop	745	691146	Screw (Brake)	922	692135	Spring-Brake
668	692889	Spacer	772	691111	Screw (Linkage Cover)	923	691487	Brake
729	690586	Clip-Wire				925	691349	Cover-Linkage

★ Included in Engine Gasket Set-Ref. No. 358.

Ø Included in Valve Gasket Set-Ref. No. 1095.

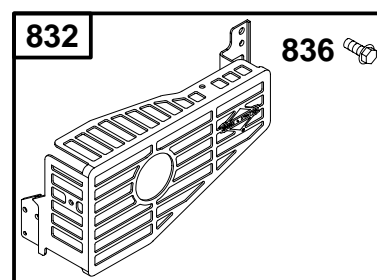
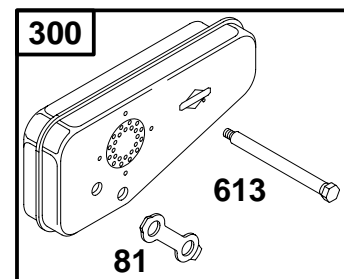
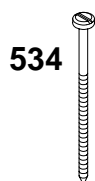
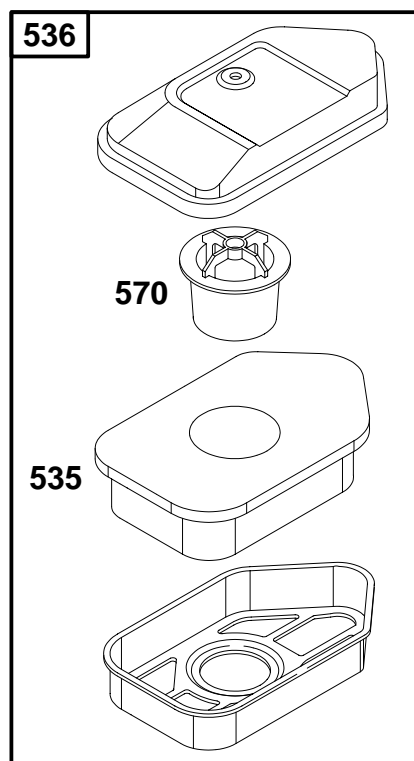
10D900 to 10D999



REF. NO.	PART NO.	DESCRIPTION	REF. NO.	PART NO.	DESCRIPTION	REF. NO.	PART NO.	DESCRIPTION
180	494406	Tank–Fuel	190A	94961	Screw (Fuel Tank Long)	670	94047	Spacer–Fuel Tank
190	692198	Screw (Fuel Tank Short)				957	497929	Cap–Fuel Tank

★ Included in Engine Gasket Set–Ref. No. 358.

Ø Included in Valve Gasket Set–Ref. No. 1095.

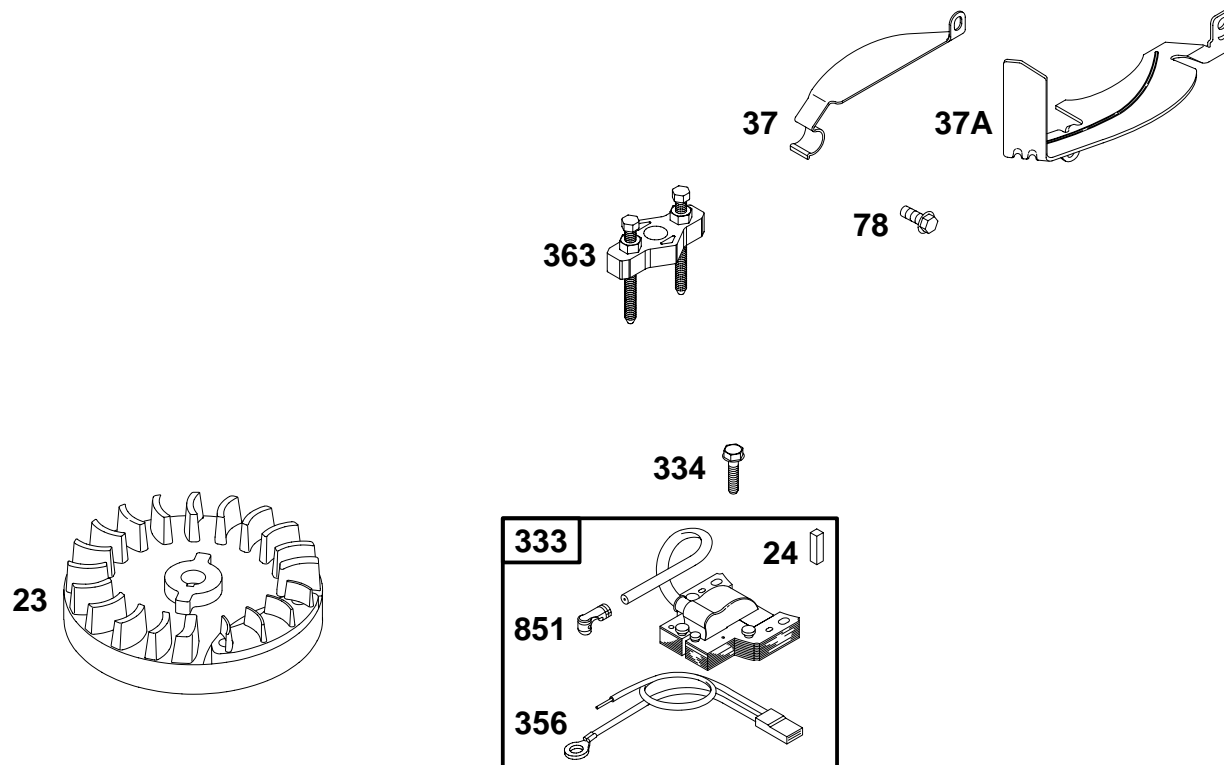


REF. NO.	PART NO.	DESCRIPTION	REF. NO.	PART NO.	DESCRIPTION	REF. NO.	PART NO.	DESCRIPTION
81	691179	Lock-Muffler Screw	535	272235	Air Cleaner Foam Filter	832	494896	Guard-Muffler
163	★271139	Gasket-Air Cleaner	536	493492	Cleaner-Air	836	94874	Screw (Muffler Guard)
300	394644	Muffler	570	280972	Support-Foam Element	883	Ø★272252	Gasket-Exhaust
534	93865	Screw (Air Cleaner)	613	93935	Screw (Muffler)			

★ Included in Engine Gasket Set-Ref. No. 358.

Ø Included in Valve Gasket Set-Ref. No. 1095.

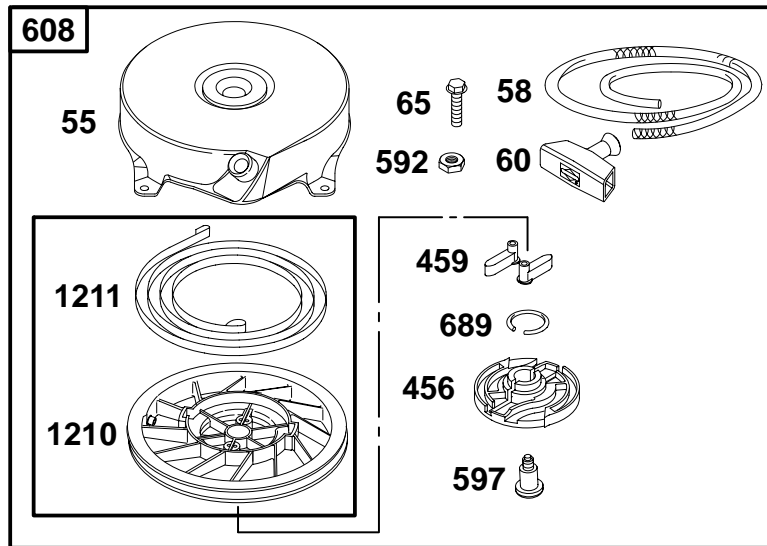
10D900 to 10D999



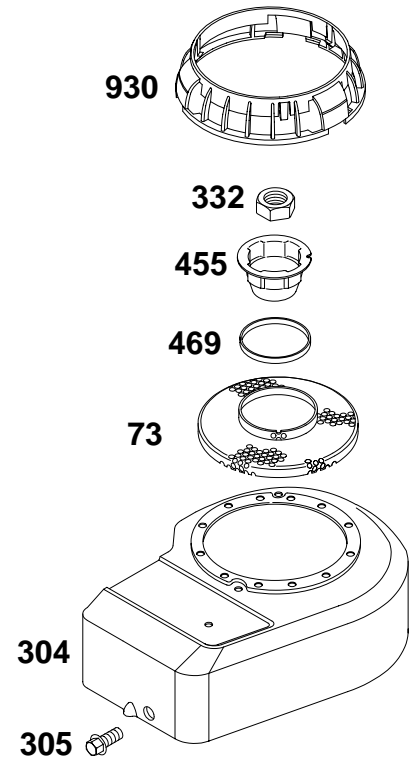
REF. NO.	PART NO.	DESCRIPTION	REF. NO.	PART NO.	DESCRIPTION	REF. NO.	PART NO.	DESCRIPTION
23	495046	Flywheel ———— Note ——— 690843 Flywheel Used on Type No(s). 0120.	37A	691209	Guard-Flywheel (Muffler Side)	356	398808	Wire-Stop (Single Stop and Ground)
24	222698	Key-Flywheel	78	94786	Screw (Flywheel Guard)	363	19069	Puller-Flywheel
37	690482	Guard-Flywheel (Carburetor Side)	333	496914	Armature-Magneto	851	493880	Terminal-Sparkplug
			334	94731	Screw (Magneto Armature)			

★ Included in Engine Gasket Set-Ref. No. 358.

Ø Included in Valve Gasket Set-Ref. No. 1095.



1036 EMISSIONS LABEL

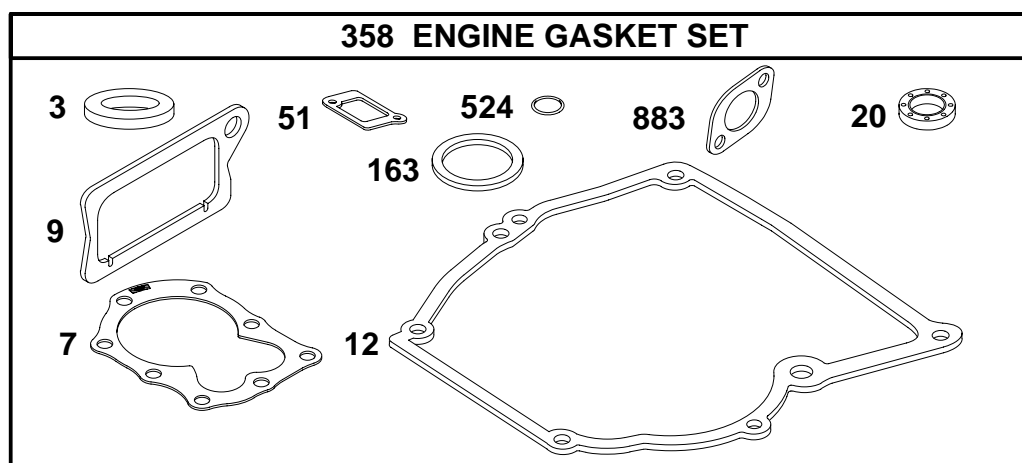


REF. NO.	PART NO.	DESCRIPTION	REF. NO.	PART NO.	DESCRIPTION	REF. NO.	PART NO.	DESCRIPTION
55	692144	Housing–Rewind Starter	305	94786	Screw (Blower Housing)	1036	695108	Label–Emission (Used After Code Date 99093000).
58	281464	Rope–Starter (Cut to Required Length)	332	94877	Nut (Flywheel)	Note		
60	281101	Grip–Starter Rope (Rewind Starter)	455	691236	Cup–Flywheel	694428 Label–Emission (Used After Code Date 99100100).		
65	94904	Screw	456	281503	Plate–Pawl Friction	1210	499901	Pulley/Spring Assembly (Pulley)
73	691235	Screen–Rotating	459	281505	Pawl–Ratchet	1211	499901	Pulley/Spring Assembly (Spring)
304	691484	Housing–Blower (Used on Compliance Engines)	469	694420	Ring–Rotating Trim			
Note			592	94908	Nut (Rewind Starter)			
692536 Housing–Blower (Used on Non Compliance Engines)			597	94943	Screw (Pawl Friction Plate)			
			608	499706	Starter–Rewind			
			689	263073	Spring–Friction			
			930	691348	Guard–Rewind			

★ Included in Engine Gasket Set–Ref. No. 358.

Ø Included in Valve Gasket Set–Ref. No. 1095.

10D900 to 10D999



REF. NO.	PART NO.	DESCRIPTION	REF. NO.	PART NO.	DESCRIPTION	REF. NO.	PART NO.	DESCRIPTION
3	★299819	Seal—Oil (Magneto Side)	12	★270833	Gasket—Crankcase (.015 Thick, Standard)	20	★391483	Seal—Oil (PTO Side)
7	★Ø272694	Gasket—Cylinder Head	Note ★270895 Gasket—Crankcase (.005 Thick) ★270896 Gasket—Crankcase (.009 Thick)			51	★270345	Gasket—Intake
9	★Ø272602	Gasket—Breather				163	★271139	Gasket—Air Cleaner
						358	298989	Gasket Set—Engine
						524	★271485	Seal—Dipstick Tube
						883	★Ø272252	Gasket—Exhaust
						1095	498526	Gasket Set—Valve

★ Included in Engine Gasket Set—Ref. No. 358.

Ø Included in Valve Gasket Set—Ref. No. 1095.